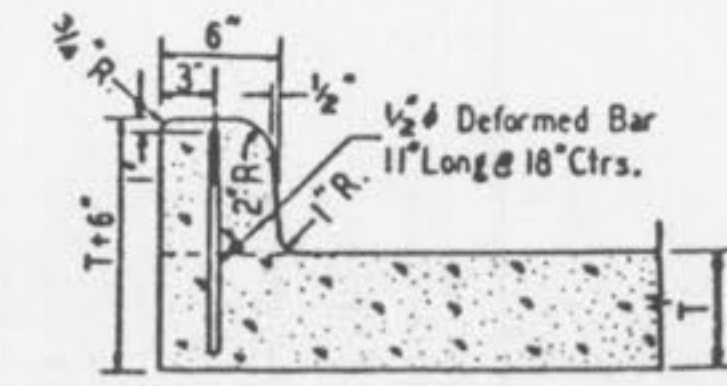
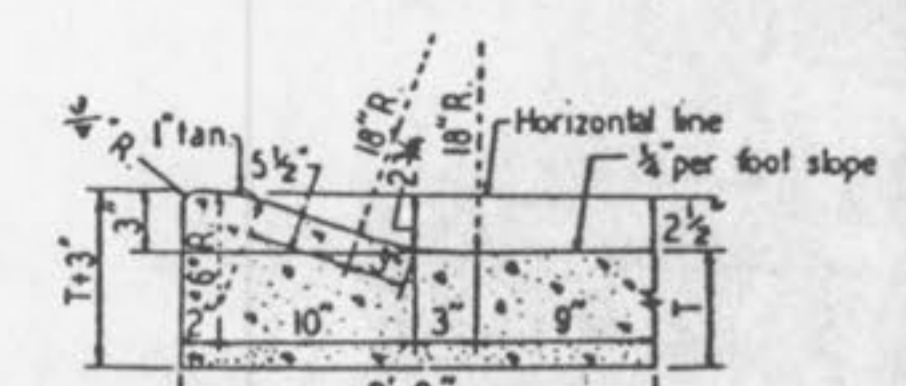


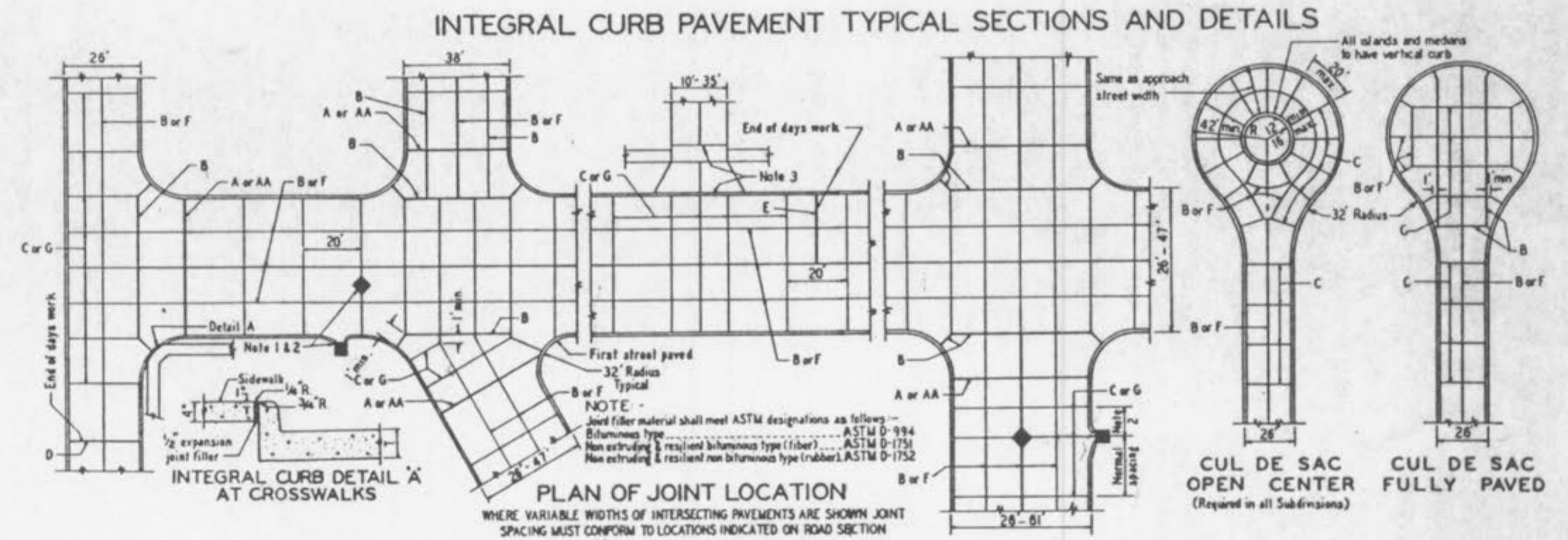
OVERFLOW STRUCTURE DETAIL
NOT TO SCALE



INTEGRAL VERTICAL CURB

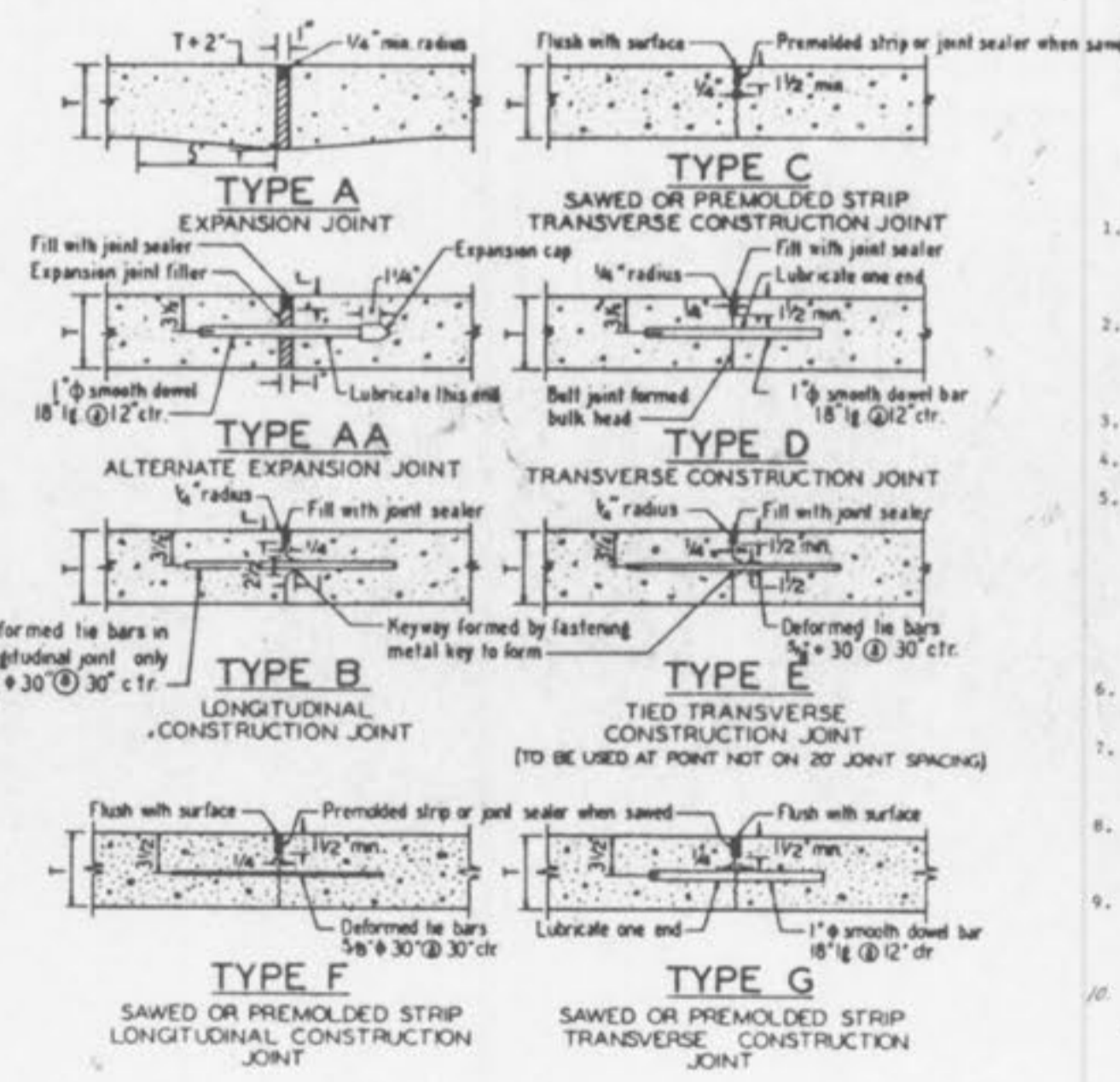


INTEGRAL ROLLED CURB



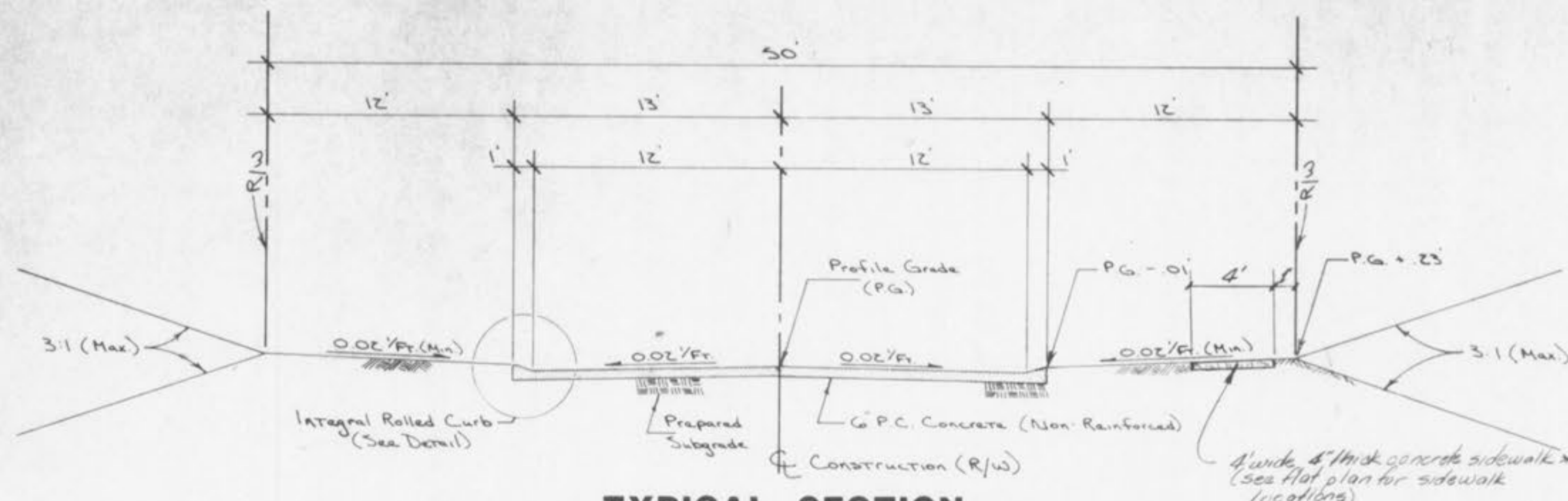
PLAN OF JOINT LOCATION

WHERE VARIABLE WIDTHS OF INTERSECTING PAVEMENTS ARE SHOWN JOINT SPACING MUST CONFORM TO LOCATIONS INDICATED ON ROAD SECTION



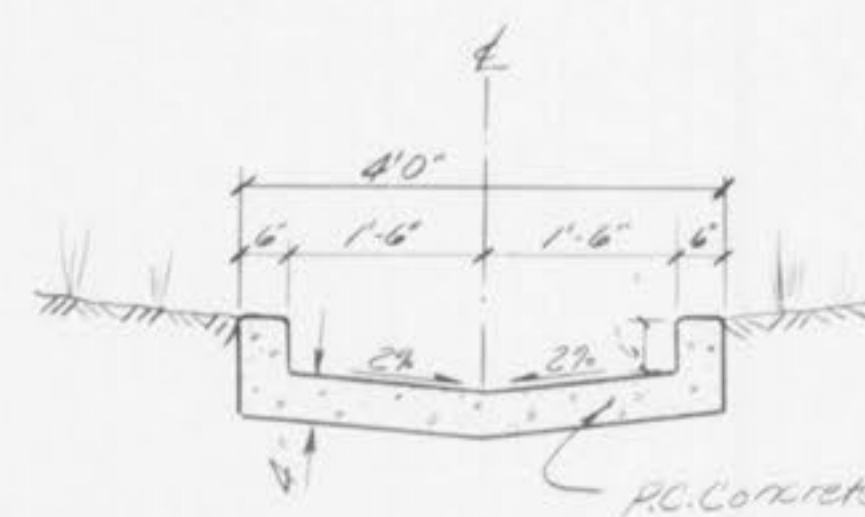
- GENERAL NOTES
1. All catch basins shall be separate from the pavement and curb by expansion joint material extending completely through curb and slab. No bolts castings within the pavement limits shall be bored as shown in the "General Construction Details".
 2. When a joint falls within 5 ft. of or contacts base, manholes, or other structures, shorten one or more manholes, or other structures, shorten one or more rectangular structures.
 3. Driveway configurations are shown in the "Entrance Construction Details".
 4. Construction joint and dowel bars may be omitted when curb is spaced integral with pavement.
 5. Minimum Thickness for Pavement is:

CONCRETE (7)	Local or Minor Streets	6"
Major or Industrial Streets	7"	
Arterial or Industrial Streets	8"	
 6. For minor rural or urban and minor subdivision pavements (6" thick concrete), 1/2" diameter deformed tie bars 30" long shall be used for Type B longitudinal joints.
 7. Refer to Exhibit 134 for joint and bar requirements for different street classifications. Note that width and location of each paved portion of the pavement may change the type and location of joint required.
 8. Transverse or longitudinal construction joints in all paved pavement may be made with groover or tool; if such device has been approved in advance by the St. Louis County Department of Highways & Traffic.
 9. The locations of the Type B and Type F longitudinal construction joints in above sections may be interchanged for the different widths of construction if approval is obtained.
 10. Standard of Charles County & City of D'Archer Paving Specifications shall apply.

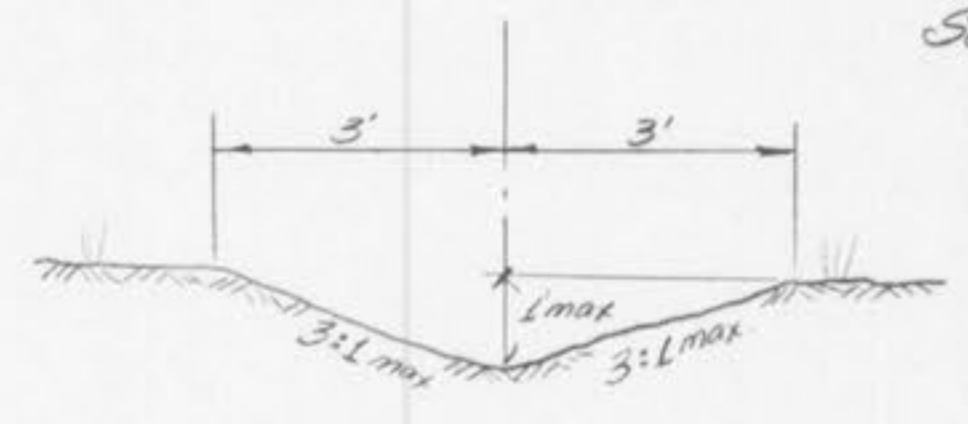


TYPICAL SECTION
(26' W. P.C. CONC. PVMT.)

* Provide Tied Curb Joints @ 4' o.c.
* Provide Pre-molded Expansion Joints @ 24' o.c.



CONCRETE SWALE
DETAIL



TYPICAL GRASS SWALE
Not to Scale

SWALE CALCULATIONS
FOR MAX Q = 3.0 cfs
n = 0.025
A = 115 sq ft
WP = 3.96'
V = 0.63 fps
D = 0.66'
S = 0.011 ft/ft
Q = 3.03 cfs