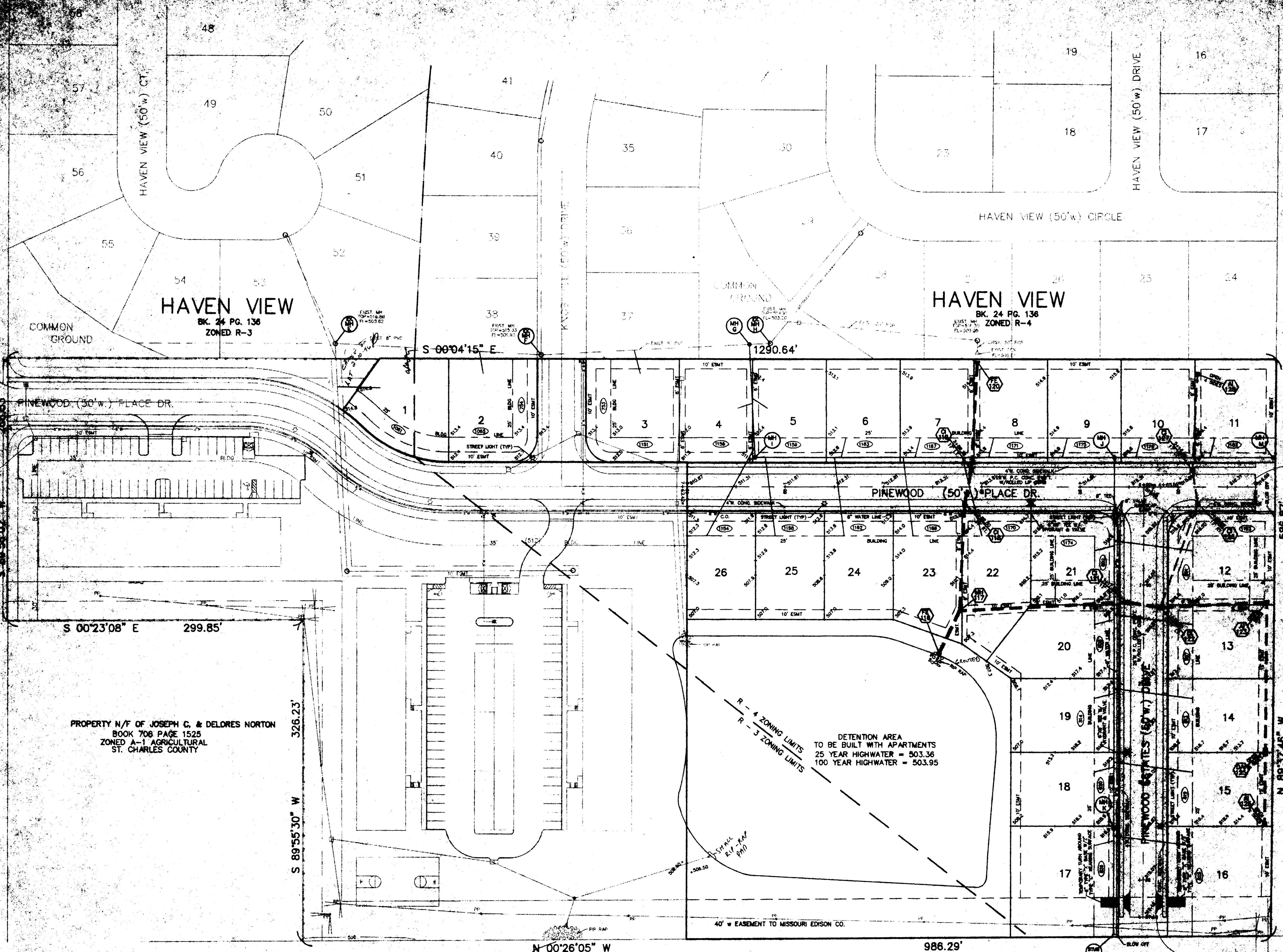


PROPERTY N/F OF ALMA C. KNOBBE
BOOK 221 PAGE 503
ZONED A-1 AGRICULTURAL
ST. CHARLES COUNTY

HAZARDOUS
SIGNAL



HAVEN VIEW
BK. 24 PG. 136
ZONED R-3

HAVEN VIEW
BK. 24 PG. 136
ZONED R-4

PROPERTY N/F OF JOSEPH C. & DELORES NORTON
BOOK 708 PAGE 1525
ZONED A-1 AGRICULTURAL
ST. CHARLES COUNTY

PROPERTY N/F OF THE PINOCHLE FARM INC.
BOOK 1243 PAGE 474
ZONED A-1 AGRICULTURAL
ST. CHARLES COUNTY

TOM CHEEVER (100'w) AVENUE

50' W LANE

50' W LANE

COMMON GROUND

40' W EASEMENT TO MISSOURI EDISON CO.

S 00°23'08" E 299.85'

S 89°55'30" W 326.23'

S 00°04'15" E

1290.64'

N 00°26'05" W

986.29'

N 88°37'45" W

586.87'