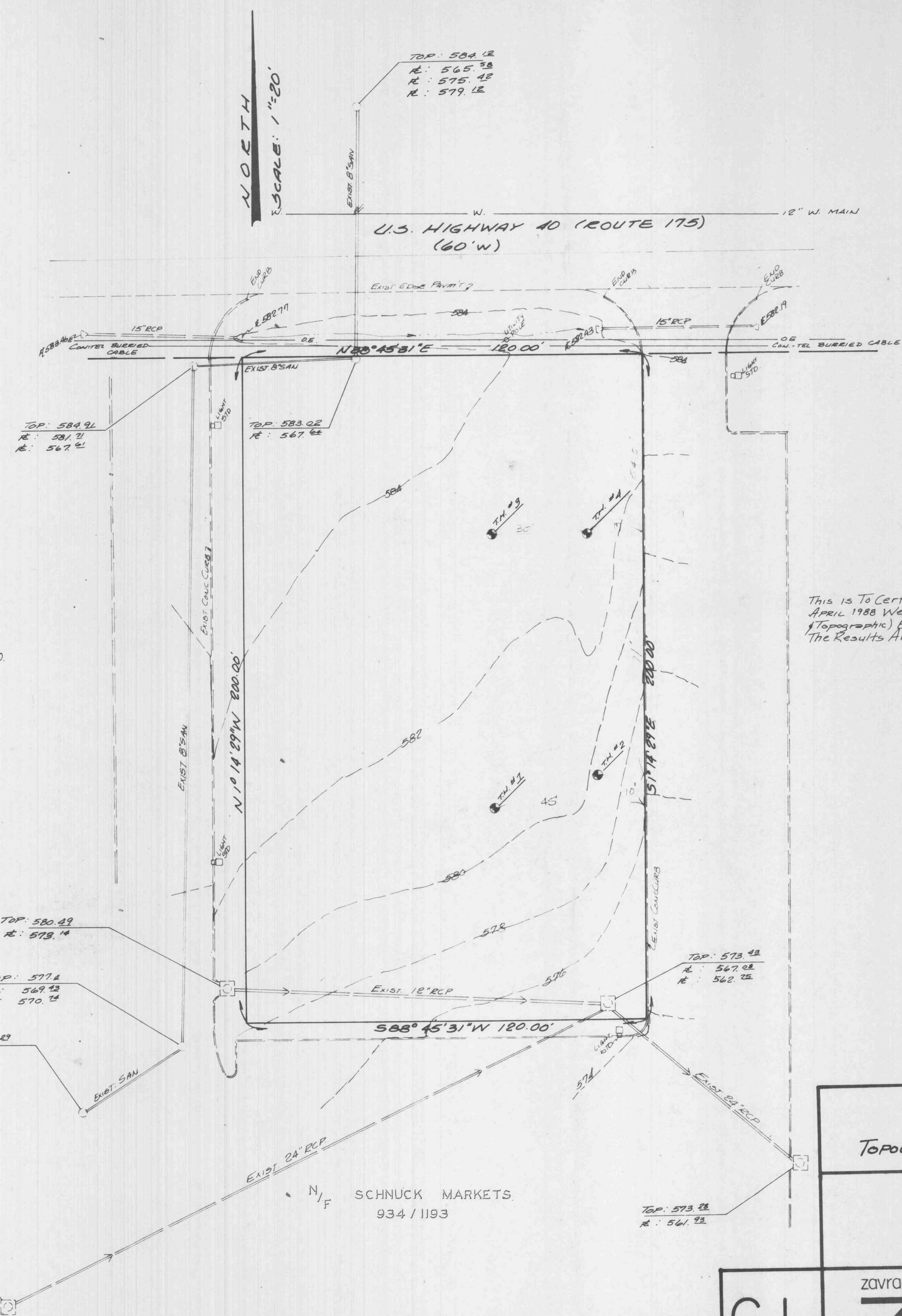
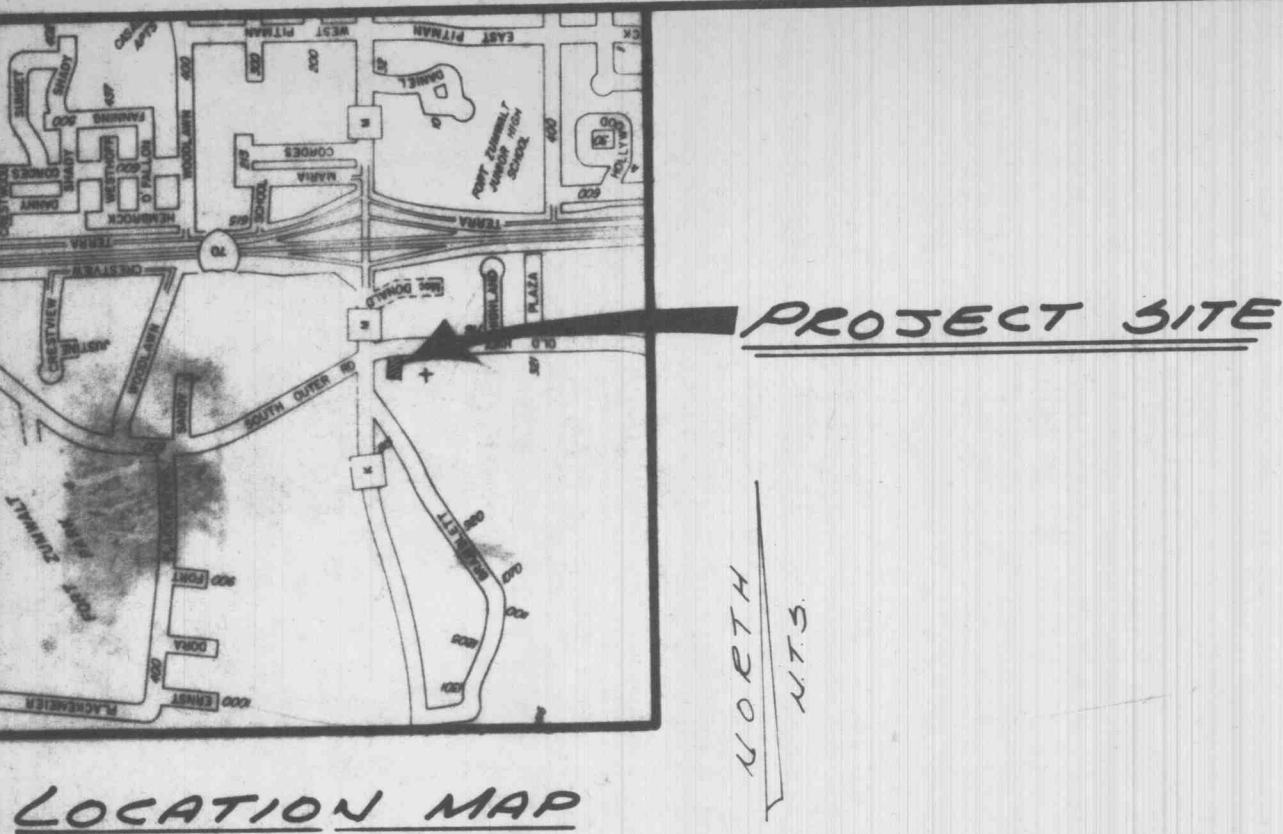


PART OF THE SW. 1/4 OF  
FRAC. SEC. 28, T.47N., R.3 E.  
ST. CHARLES CO., MO.



LEGEND OF SYMBOLS

—E—	OE (Overhead Electric)	+E.	lured end Section
⊙	Valve	E.P.	End Pipe
OLS	Light Standard	R.C.P.	Reinforced concrete pipe
— —	Utility Pole & Guy Wire	A.I.	Area Inlet
⊠	Curb Inlet	D.C.I.	Double Curb Inlet
⊞	Gate Inlet	C.I.P.	Cast iron pipe
---	Exist Contour	Proposed Contour	
---	Exist Structure	C.O.	Clean out
+	Street Sign	V.T.	Vent trap
+	Manhole Top & Flow Line	M.H.	Manhole
---	Exist. Sanitary Sewer	Sanitary Sewer (Proposed)	
---	PVC Polyvinyl Chloride Pipe	V.C.P.	Vitrified clay pipe
---	Exist Storm Sewer	Storm Sewer (Proposed)	
---	Concrete Pipe	End of Lateral	
---	CMP Corrugated Metal Pipe	Lateral	
+	Fire Hydrant	Lot or Building Number	
⊙	6" Tree	Test Hole	
•	Old Iron Pipe	Exist. Fence Line	
⊙	Concrete Monument	Exist Tree Line	
OTL	Traffic Light	Tee and Valve	
G	Gas	Cap	
W	Water	Thrust Block	
M	Meter	S.C.I.	Skewed Curd Inlet
DAI	Double Area Inlet		

This is To Certify That During The Month Of  
April 1988 We Have Executed A Survey (Boundary  
& Topographic) By The Order Of Pizza Hut And  
The Results Are Correctly Shown Hereon  
*R. Zavradinos*  
H. ZAVRADINOS  
Mo. RL 9-323

CONTINENTAL CO.  
257 / 305

GEORGE BUTLER ASSOCIATES, INC.  
SUITE 200 - 225 SOUTH MAIN ST.  
OFALLON, MISSOURI 63366  
RECEIVED JUN 03 1988

BOUNDARY  
AND  
TOPOGRAPHIC SURVEY  
  
PIZZA HUT  
OFALLON, MO.

CI zavradinos & associates, inc.  
Engineers Surveyors Planners  
2045 Old Highway 94 South  
St. Charles, Missouri 63303  
314 / 946-5560 #88250

NOTE: SITE SUBJECT TO  
TITLE SEARCH.

Basements and underground facilities, structures  
and utilities have been plotted from available  
surveys and records and therefore their locations  
must be considered approximate only. It is  
possible there may be others, the existence of  
which is presently not known or shown. It is the  
contractors responsibility to determine their  
existence, exact location and depth and avoid  
damage thereto.