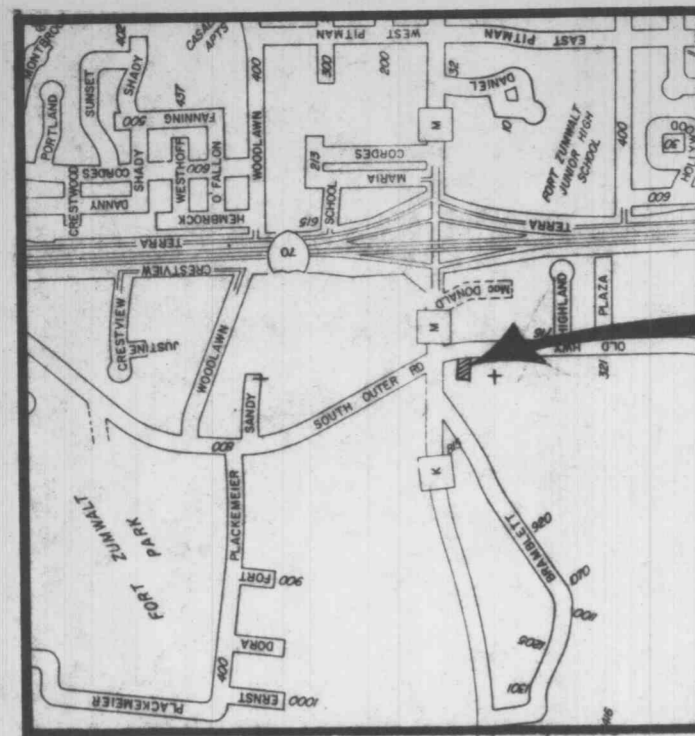


PART OF THE SW 1/4 OF
FRAC. SEC. 28, T.47N., R.3 E.
ST. CHARLES CO., MO.



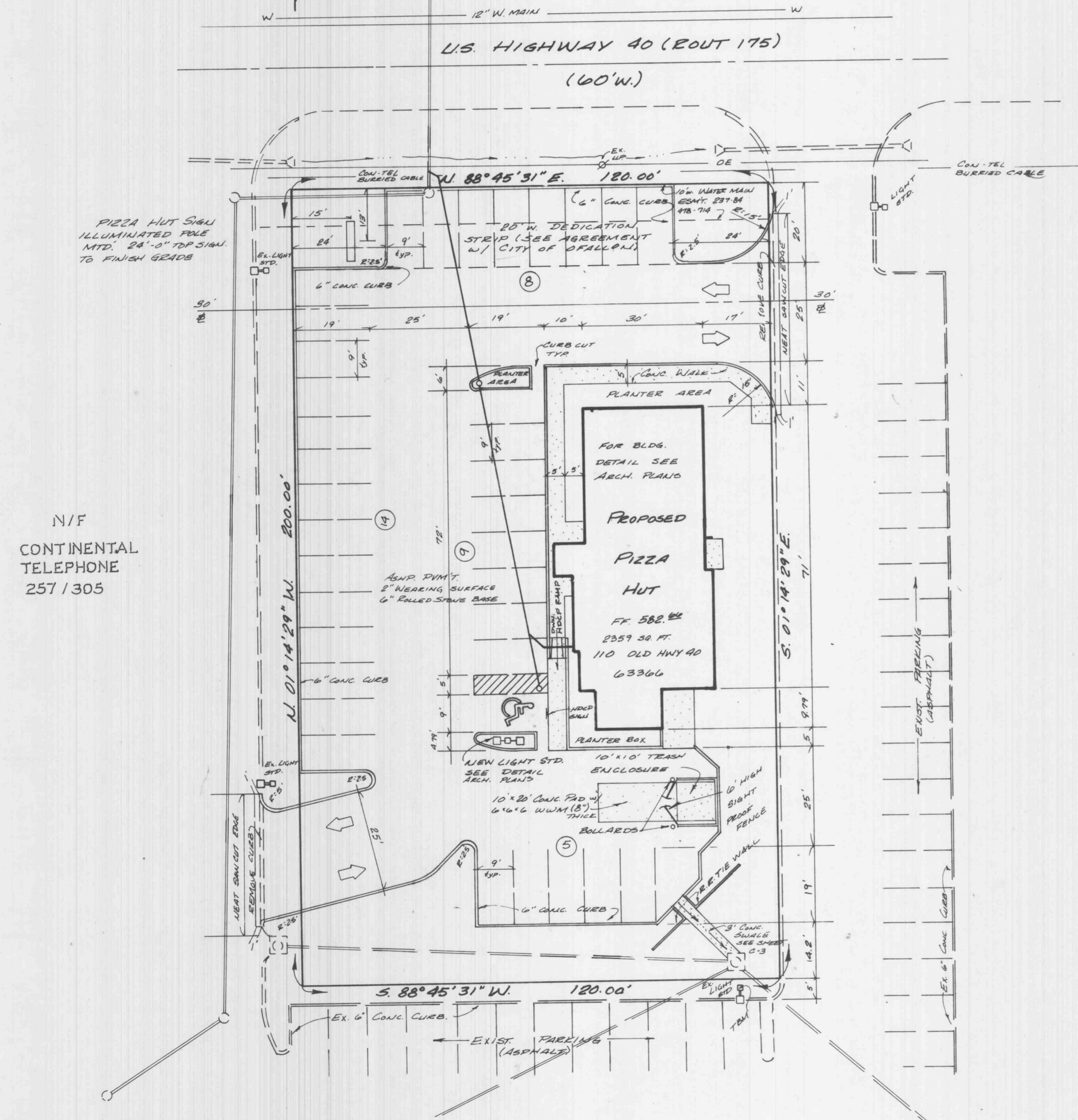
LOCATION MAP

PROJECT SITE.

NORTH
SCALE: 1"=20'

NORTH
SCALE: 1"=20'

SITE PLAN



N/F
CONTINENTAL
TELEPHONE
257/305

N/F SCHNUCK MARKET INC.
936/1193

US&S B.M. - "w" most top flange bolt on F.H. approximately 175' north of Dentist on west side, south of Missouri State Hwy K. 569.80

SITE B.M. - "x" on top of concrete light stand base at southeast corner. 576.75

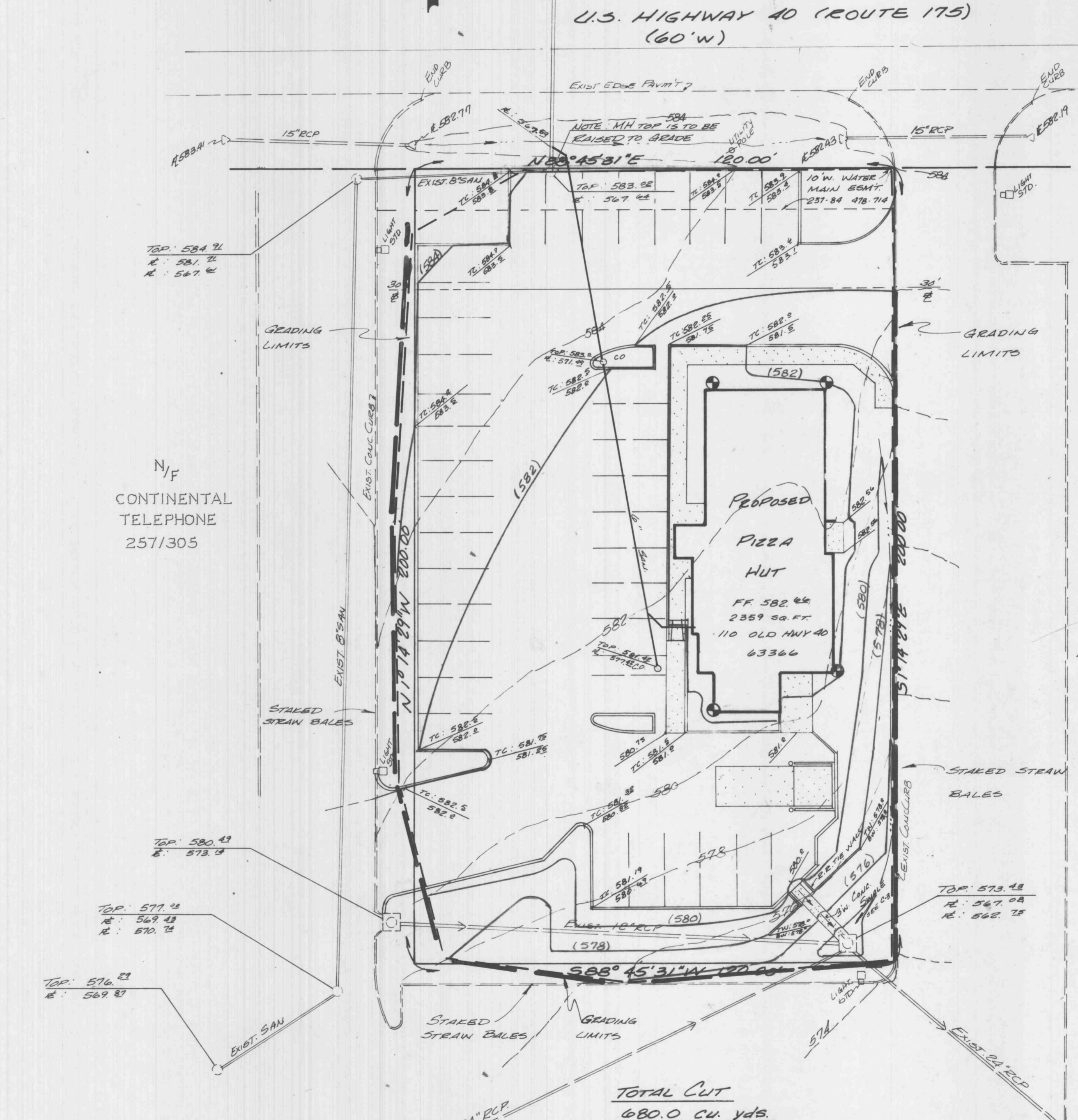
UTILITIES SERVING SITE:

- St. Charles Gas Co. 946-6170
- Contel Telephone Co. 327-3928
- Union Electric 327-6203
- O'Fallon Fire Department 272-3493
- Water & Sewer City of O'Fallon 281-2858

Basements and underground facilities, structures and utilities have been plotted from available surveys and records and therefore their locations must be considered approximate only. It is possible there may be others, the existence of which is presently not known or shown. It is the contractor's responsibility to determine their existence, exact location and depth and avoid damage thereto.

NORTH
SCALE: 1"=20'

GRADING PLAN



N/F
CONTINENTAL
TELEPHONE
257/305

TOTAL CUT
680.0 CU. YDS.

N/F SCHNUCK MARKETS INC.
934/1193

NOTE: ALL GRADES TO FINISH SURFACE

TOP: 576.75
E: 569.80
COULD NOT REMOVE TOP

NOTE: DETENTION PROVIDED FOR PREVIOUSLY. SEE DRAINAGE AREA MAP OF SCHNUCK SITE.

GEORGE BUTLER ASSOCIATES, INC.
SUITE 200 - 225 SOUTH MAIN ST.
O'FALLON, MISSOURI 63366

RECEIVED JUN 03 1988

SITE & GRADING PLANS

PREPARED FOR:
PIZZA HUT of St. Louis, Inc.
760 Rue St. Francois
Florissant, Mo. 63031
(314) 858-8732

C2

zavradinos & associates, inc.
Engineers Surveyors Planners
2045 Old Highway 94 South
St. Charles, Missouri 63303
314 / 946 - 5560 #88250