

UTILITY INFORMATION:

UNDERGROUND FACILITIES, STRUCTURES, AND UTILITIES HAVE BEEN PLOTTED FROM AVAILABLE SURVEYS AND RECORDS, AND THEREFORE DO NOT NECESSARILY REFLECT THE ACTUAL EXISTENCE, NON-EXISTENCE, SIZE, TYPE, NUMBER, OR LOCATION OF THESE FACILITIES, STRUCTURES, AND UTILITIES. THE CONTRACTOR SHALL BE RESPONSIBLE FOR VERIFYING THE ACTUAL LOCATION OF ALL UNDERGROUND FACILITIES, STRUCTURES, AND UTILITIES, EITHER SHOWN OR NOT SHOWN ON THESE PLANS. THE UNDERGROUND FACILITIES, STRUCTURES, AND UTILITIES SHALL BE LOCATED IN THE FIELD PRIOR TO ANY GRADING, EXCAVATION, OR CONSTRUCTION OF IMPROVEMENTS.



MISSOURI UTILITY LOCATE SERVICES
PHONE: 800.344.7483 OR WWW.MO1CALL.COM

SANITARY SEWER KEY NOTES

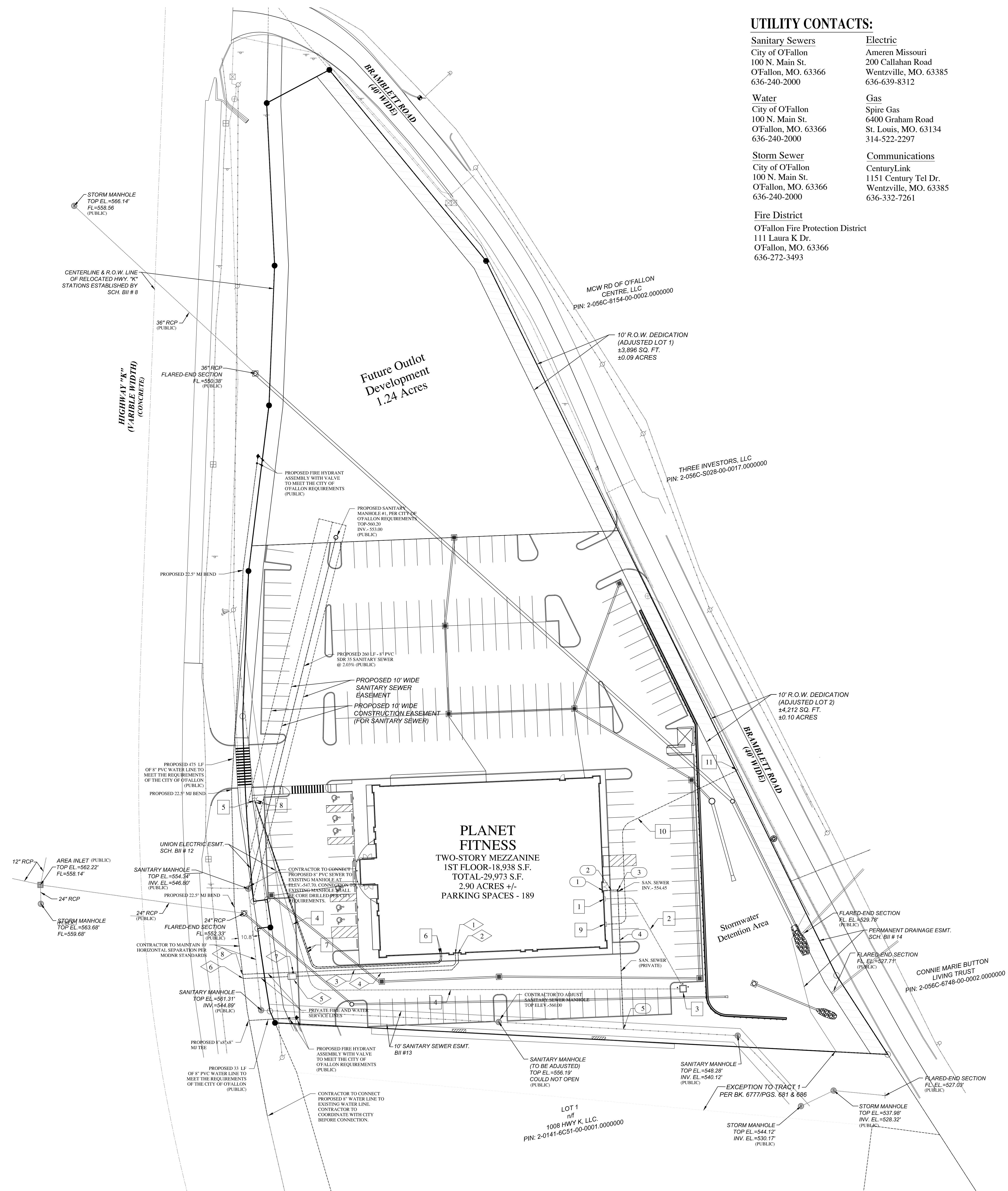
- 1 PROPOSED 6" PVC SCHEDULE 40 SANITARY SEWER STUB TO BUILDING AT INVERT = 555.00±. SEE PLUMBING PLANS FOR CONNECTION INTO THE BUILDING.
- 2 PROPOSED 11 LF OF 6" PVC SCHEDULE 40 SANITARY SEWER LATERAL AT 5.00%.
- 3 PROPOSED SANITARY SEWER CLEANOUT PER DETAIL ON SHEET C703.
- 4 PROPOSED 100 LF OF 6" PVC SCHEDULE 40 SANITARY SEWER LATERAL AT 12.95%.
- 5 CONTRACTOR TO CONNECT PROPOSED 6" PVC SCHEDULE 40 SANITARY SEWER SERVICE TO PROPOSED SANITARY SEWER AT INV. 541.50±. CONTRACTOR TO COORDINATE WITH CITY OF OFALLON BEFORE CONNECTION.

DRY UTILITY KEY NOTES

- 1 PROPOSED ELECTRICAL SERVICE STUB TO BUILDING WITH TWO BOLLARDS TO PROTECT METER.
- 2 PROPOSED ELECTRICAL SERVICE TO NEW PAD MOUNTED TRANSFORMER TO BUILDING. CONTRACTOR TO COORDINATE WITH AMEREN AND ELECTRICAL ENGINEER FOR SERVICE.
- 3 PROPOSED PAD MOUNTED TRANSFORMER WITH BOLLARDS. CONTRACTOR TO COORDINATE WITH AMEREN ON LOCATION AND SERVICE.
- 4 PROPOSED ELECTRICAL SERVICE TO NEW PAD MOUNTED TRANSFORMER TO EXISTING POWER SOURCE. CONTRACTOR TO COORDINATE WITH AMEREN AND ELECTRICAL ENGINEER FOR SERVICE.
- 5 EXISTING ELECTRICAL SERVICE. CONTRACTOR TO COORDINATE WITH AMEREN AND ELECTRICAL ENGINEER FOR CONNECTION AND SERVICE.
- 6 PROPOSED TELEPHONE AND DATA SERVICE STUB TO BUILDING.
- 7 PROPOSED TELEPHONE AND DATA CONNECTION TO EXISTING DATA SOURCE.
- 8 EXISTING TELEPHONE AND DATA SERVICE. CONTRACTOR TO COORDINATE WITH TELECOMMUNICATION COMPANY FOR CONNECTION AND SERVICE.
- 9 PROPOSED 2-INCH GAS SERVICE STUB AND METER TO BUILDING, WITH TWO BOLLARDS TO PROTECT METER. CONTRACTOR TO COORDINATE METER, BOLLARD AND POC LOCATION WITH MEP ENGINEER CONSTRUCTION PLANS.
- 10 PROPOSED GAS SERVICE. CONTRACTOR TO COORDINATE WITH SPIRE AND MEP ENGINEER FOR SERVICE.
- 11 EXSITING GAS SERVICE. CONTRACTOR TO COORDINATE WITH SPIRE ENERGY AND MEP ENGINEER FOR TAP AND SERVICE.

WATER KEY NOTES

- 1 PROPOSED 2" DOMESTIC WATER SERVICE STUB TO BUILDING. CONTRACTOR TO COORDINATE LOCATION WITH PLUMBING ENGINEER.
- 2 PROPOSED 6" FIRE SERVICE STUB TO THE BUILDING. CONTRACTOR TO COORDINATE LOCATION WITH SPRINKLER AND PLUMBING ENGINEER.
- 3 PROPOSED 2" DOMESTIC WATER LINE (FLEXIBLE TYPE "K" COPPER) TO BUILDING. MINIMUM BURY DEPTH 48" BELOW FINISHED GRADE.
- 4 PROPOSED 6" FIRE SERVICE WATER LINE TO BUILDING. CONTRACTOR SHALL USE PVC AWWA C900/ASTM D2241, CLASS DR 18 OR DUCTILE IRON PIPE, CLASS 55 WITH POLYWRAP. MINIMUM BURY DEPTH 48" BELOW FINISHED GRADE.
- 5 PROPOSED WATER METER VAULT. INSTALLATION TO BE COORDINATED WITH CITY OF OFALLON WATER DEPARTMENT.
- 6 PROPOSED 6" WATER LINE CONNECTION WITH VALVE AND 6" WATER LINE TO METER VAULT TO BE COORDINATED WITH CITY OF OFALLON WATER DEPARTMENT.
- 7 PROPOSED 2" DOMESTIC WATER METER. CONTRACTOR TO COORDINATE INSTALLATION OF METER AND SERVICE WITH THE CITY OF OFALLON WATER DEPARTMENT.
- 8 PROPOSED 2" DOMESTIC WATER SERVICE TAP. CONTRACTOR TO COORDINATE INSTALLATION OF METER AND SERVICE WITH THE CITY OF OFALLON WATER DEPARTMENT.



UTILITY CONTACTS:

Sanitary Sewers
City of Ofallon
100 N. Main St.
Ofallon, MO. 63366
636-240-2000

Water
City of Ofallon
100 N. Main St.
Ofallon, MO. 63366
636-240-2000

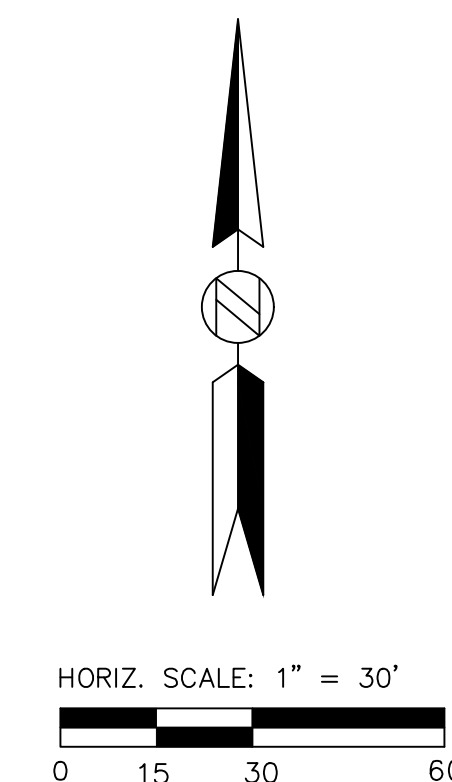
Storm Sewer
City of Ofallon
100 N. Main St.
Ofallon, MO. 63366
636-240-2000

Fire District
Ofallon Fire Protection District
111 Laura K Dr.
Ofallon, MO. 63366
636-272-3493

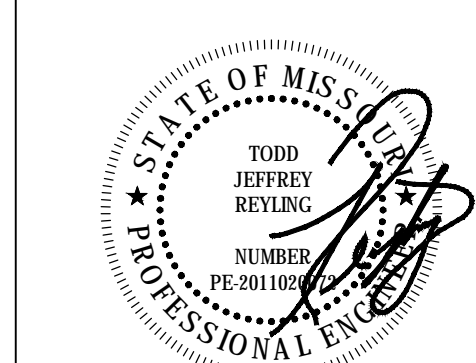
Electric
Ameren Missouri
200 Callahan Road
Wentzville, MO. 63385
636-639-8312

Gas
Spire Gas
6400 Graham Road
St. Louis, MO. 63134
314-522-2297

Communications
CenturyLink
1151 Century Tel Dr.
Wentzville, MO. 63385
636-332-7261

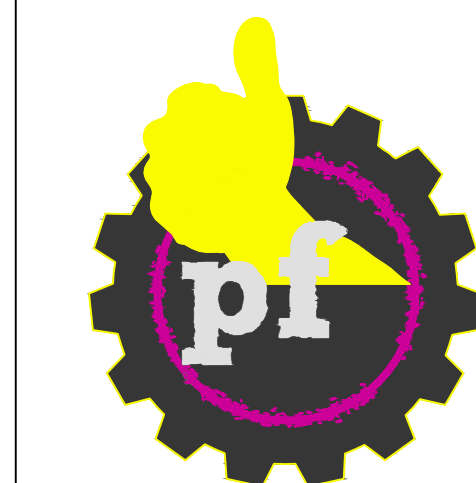


RDC Project No. 20-115



LICENSE EXPIRES - 12.31.2023
DATE SIGNED - 12.01.2021

ENGINEER OF RECORD:
Todd J. Reyling, PE
Missouri PE 201102072



New Ground Up Building for:
PLANET FITNESS

914 Highway K
Ofallon, MO 63366
St. Charles County

MTSTUDIO PROJECT NUMBER:

ISSUED / REVISED	DATE
ISSUED TO CITY	05.12.2021
REVISED PER CITY/NOT COMMENTS	07.20.2021
REVISED PER CITY/NOT COMMENTS	08.10.2021
REVISED FOR RETAINING WALL	11.18.2021
REVISED PER CITY COMMENTS	12.01.2021

Site Utility Plan

C500