

SEDIMENT AND EROSION CONTROL NOTES:

ALL SEDIMENT AND EROSION CONTROL PRACTICES SHALL BE IN COMPLIANCE WITH CITY OF O'FALLON, ST. CHARLES COUNTY, MISSOURI AND THE MISSOURI DEPARTMENT OF NATURAL RESOURCES.

APPROVAL OF THIS EROSION AND SEDIMENTATION CONTROL (ESC) PLAN DOES NOT CONSTITUTE AN APPROVAL OF PERMANENT ROAD OR DRAINAGE DESIGN.

THE IMPLEMENTATION OF THESE ESC PLANS AND THE CONSTRUCTION, MAINTENANCE, REPLACEMENT, AND UPGRADING OF THESE ESC FACILITIES IS THE RESPONSIBILITY OF THE CONTRACTOR/ESC RESPONSIBLE PARTY UNTIL ALL CONSTRUCTION IS APPROVED. THE CONTRACTOR IS ALSO RESPONSIBLE FOR ALL EROSION AND SEDIMENT CONTROL PERMITTING.

THE BOUNDARIES OF THE CLEARING LIMITS SHOWN ON THIS PLAN SHALL BE CLEARLY FLAGGED BY SURVEY TAPE OR FENCING, PRIOR TO CONSTRUCTION. DURING THE CONSTRUCTION PERIOD, NO DISTURBANCE BEYOND THE CLEARING LIMITS SHALL BE PERMITTED. THE CLEARING LIMITS SHALL BE MAINTAINED BY THE CONTRACTOR/ESC RESPONSIBLE PARTY FOR THE DURATION OF THE CONSTRUCTION.

THE STABILIZED CONSTRUCTION ENTRANCE SHALL BE INSTALLED AT THE BEGINNING OF CONSTRUCTION AND MAINTAINED THROUGHOUT THE DURATION OF THE PROJECT. ADDITIONAL MEASURES, SUCH AS CONSTRUCTED WHEEL WASH SYSTEMS OR WASH PADS, MAY BE REQUIRED TO ENSURE THAT ALL PAVED AREAS ARE KEPT CLEAN AND THAT TRACK OUT TO ROAD RIGHT OF WAY DOES NOT OCCUR FOR THE DURATION OF THE PROJECT.

THE ESC FACILITIES SHOWN ON THIS PLAN MUST BE CONSTRUCTED PRIOR TO OR IN CONJUNCTION WITH ALL CLEARING AND GRADING SO AS TO ENSURE THAT THE TRANSPORT OF SEDIMENT TO SURFACE WATERS, DRAINAGE SYSTEMS, AND ADJACENT PROPERTIES IS MINIMIZED.

THE ESC FACILITIES SHOWN ON THIS PLAN ARE THE MINIMUM REQUIREMENTS FOR ANTICIPATED CONSTRUCTION ACTIVITIES. DURING THE CONSTRUCTION PERIOD, THESE ESC FACILITIES SHALL BE UPGRADED AS NEEDED FOR UNEXPECTED STORM EVENTS AND MODIFIED TO ACCOUNT FOR CHANGING SITE CONDITIONS.

THE ESC FACILITIES SHALL BE INSPECTED DAILY BY THE CONTRACTOR/ESC RESPONSIBLE PARTY AND MAINTAINED TO ENSURE CONTINUED PROPER FUNCTIONING. WRITTEN RECORDS SHALL BE KEPT OF WEEKLY REVIEW OF THE ESC FACILITIES.

ANY AREAS OF EXPOSED SOILS, INCLUDING ROADWAY EMBANKMENTS, THAT WILL NOT BE DISTURBED FOR TWO DAYS DURING WET SEASON OR SEVEN DAYS THE DRY SEASON SHALL BE IMMEDIATELY STABILIZED WITH THE APPROVED ESC COVER METHODS (SEEDING, MULCHING, ETC.)

ANY AREA NEEDING ESC MEASURES, NOT REQUIRING IMMEDIATE ATTENTION SHALL BE ADDRESSED WITHIN SEVEN DAYS.

THE ESC FACILITIES ON INACTIVE SITES SHALL BE INSPECTED AND MAINTAINED A MINIMUM OF ONCE A MONTH OR WITHIN 24 HOURS FOLLOWING A STORM EVENT.

ANY PERMANENT RETENTION/DETENTION FACILITY USED AS A TEMPORARY SETTLING BASIN SHALL BE MODIFIED WITH THE NECESSARY EROSION CONTROL MEASURES AND SHALL PROVIDE ADEQUATE STORAGE CAPACITY. IF THE PERMANENT FACILITY IS TO FUNCTION ULTIMATELY AS AN INFILTRATION SYSTEM, THE TEMPORARY FACILITY MUST BE ROUGH GRADED SO THAT THE BOTTOM AND SIDES ARE AT LEAST THREE FEET ABOVE THE FINAL GRADE OF THE PERMANENT FACILITY.

PRIOR TO THE BEGINNING OF THE WET SEASON, ALL DISTURBED AREAS SHALL BE REVIEWED TO IDENTIFY WHICH ONES CAN BE SEEDED IN PREPARATION FOR THE WINTER WEATHER. DISTURBED AREAS SHALL BE SEEDED WITHIN ONE WEEK OF THE BEGINNING OF THE WET SEASON. A SKETCH MAP OF THOSE AREAS TO BE SEEDED AND THOSE AREAS TO REMAIN UNCOVERED SHALL BE SUBMITTED TO THE ESC INSPECTOR FOR REVIEW.

EROSION CONTROL BLANKETS, SOIL BINDERS, OR HYDROSEEDING SHALL BE USED TO PREVENT SOIL EROSION. AREAS THAT ARE EXPOSED FOR 14 DAYS OR MORE ARE INACTIVE AND MUST BE COVERED. ALL OTHER AREAS SHALL BE PROTECTED AS REQUIRED TO PREVENT SOIL EROSION.

EROSION AND SEDIMENTATION CONTROL

RECOMMENDED CONSTRUCTION SEQUENCE:

1. CONTRACTOR TO CONDUCT A PRE-CONSTRUCTION MEETING.
2. CONTRACTOR TO POST A SIGN WITH NAME AND PHONE NUMBER OF ESC RESPONSIBLE PARTY.
3. CONTRACTOR TO FLAG AND FENCE CLEARING LIMITS.
4. INSTALL CATCH BASIN PROTECTION, IF REQUIRED.
5. GRADE AND INSTALL CONSTRUCTION ENTRANCE(S).
6. CONTRACTOR TO INSTALL PERIMETER BARRIER, SILT FENCE, ETC.
7. CONSTRUCT SEDIMENT PONDS AND TRAPS, IF REQUIRED.
8. GRADE AND STABILIZE CONSTRUCTION ROADS.
9. CONSTRUCT SURFACE WATER CONTROLS (INTERCEPTOR DIKES, PIPE SLOPE DRAINS, ETC.) SIMULTANEOUSLY WITH CLEARING AND GRADING FOR PROJECT DEVELOPMENT.
10. MAINTAIN EROSION CONTROL MEASURES IN ACCORDANCE WITH APPLICABLE STANDARDS AND MANUFACTURERS RECOMMENDATIONS.
11. RELOCATED EROSION CONTROL MEASURES OR INSTALL NEW MEASURES AS SITE CONDITIONS CHANGE TO ENSURE THE SEDIMENT AND EROSION CONTROL IS ALWAYS IN ACCORDANCE WITH APPLICABLE STANDARDS.
12. COVER ALL AREAS THAT WILL NOT BE WORKED ON FOR MORE THAN SEVEN DAYS DURING THE DRY SEASON OR TWO DAYS DURING THE WET SEASON WITH STRAW, WOOD FIBER MULCH, COMPOST OR EQUIVALENT.
13. STABILIZE ALL AREAS THAT REACH FINAL GRADE WITHIN SEVEN DAYS.
14. SEED OF SOD ANY AREAS THAT WILL NOT BE WORKED ON FOR MORE THAN 30 DAYS.
15. UPON COMPLETION OF THE PROJECT, ALL DISTURBED AREAS MUST BE STABILIZED AND BMPs REMOVED IF APPROPRIATE.

EROSION AND SEDIMENT CONTROL

BASIC PRACTICES:

PRESERVE AND PROTECT AREAS OF NATURAL VEGETATION. AREAS TO BE PRESERVED SHALL BE PROTECTED WITH SILT FENCING TO PREVENT DAMAGE FROM CONSTRUCTION OPERATIONS.

TAKE SPECIAL PRECAUTIONS TO PREVENT DAMAGE THAT COULD RESULT FROM DEVELOPMENT ACTIVITIES NEAR WATERCOURSES, LAKES, AND WETLANDS.

MINIMIZE THE EXTENT AND DURATION OF THE DEVELOPMENT AREA EXPOSED AT ONE TIME.

APPLY TEMPORARY EROSION CONTROL PRACTICES AS SOON AS POSSIBLE TO STABILIZE EXPOSED SOILS AND PREVENT ON-SITE DAMAGE.

INSTALL SEDIMENT BASINS OR TRAPS, FILTER BARRIERS, DIVERSIONS, AND PERIMETER CONTROL MEASURES PRIOR TO SITE CLEARING AND GRADING TO PROTECT THE DISTURBED AREA FROM OFF-SITE AND ON-SITE RUNOFF AND TO PREVENT SEDIMENT TRANSPORT TO AREAS DOWNSTREAM OF THE DEVELOPMENT SITE.

KEEP RUNOFF VELOCITIES LOW, AND RETAIN RUNOFF ON SITE AS MUCH AS POSSIBLE.

PROVIDE MEASURES TO PREVENT SEDIMENT FROM BEING TRACKED ONTO PUBLIC OR PRIVATE ROADWAYS.

IMPLEMENT FINAL GRADING AND INSTALL PERMANENT VEGETATION ON DISTURBED AREAS AS SOON AS POSSIBLE.

SITE AND BEST MANAGEMENT PRACTICE (BMPs) INSPECTIONS MUST BE COMPLETED WEEKLY, OR AFTER EACH STORM EVENT RESULTING IN MORE THAN 0.5 INCH OF RAINFALL. THE PURPOSE OF THE INSPECTIONS IS TO ASSESS AND DETERMINE WHETHER THE SOIL EROSION AND SEDIMENT CONTROL MEASURES IDENTIFIED IN THE EROSION CONTROL PLAN ARE OPERATING PROPERLY AND EFFECTIVELY, AND TO INITIATE MAINTENANCE AS NEEDED. INSPECTIONS SHOULD INCLUDE A VISUAL OBSERVATION OF ALL DISTURBED AREAS OF THE REGULATED DEVELOPMENT, MATERIAL STORAGE AREAS, SEDIMENT AND EROSION CONTROL MEASURES, LOCATIONS WHERE VEHICLES ENTER AND EXIT THE SITE, AND ACCESSIBLE DISCHARGE POINTS/OUTFALLS.

INSPECTIONS SHOULD BE COMPLETED AND CONDUCTED BY QUALIFIED INSPECTORS WHO ARE FAMILIAR WITH THE EROSION CONTROL PLAN AND THE BMPs IMPLEMENTED AT THE SITE. IN GENERAL, IF INSPECTIONS INDICATE THAT A BMP IS NOT OPERATING PROPERLY, IT IS RECOMMENDED THAT MAINTENANCE AND MODIFICATION OF THE BMP BE PERFORMED AS SOON AS POSSIBLE AND BEFORE THE NEXT STORM EVENT WHENEVER PRACTICABLE AND NO LATER THAN SEVEN (7) CALENDAR DAYS FROM THE INSPECTION DATE, TO ENSURE ITS CONTINUED EFFECTIVENESS. MINIMUM MAINTENANCE STANDARDS FOR EACH SPECIFIC BMP ARE INCLUDED IN THE EROSION CONTROL PLAN.

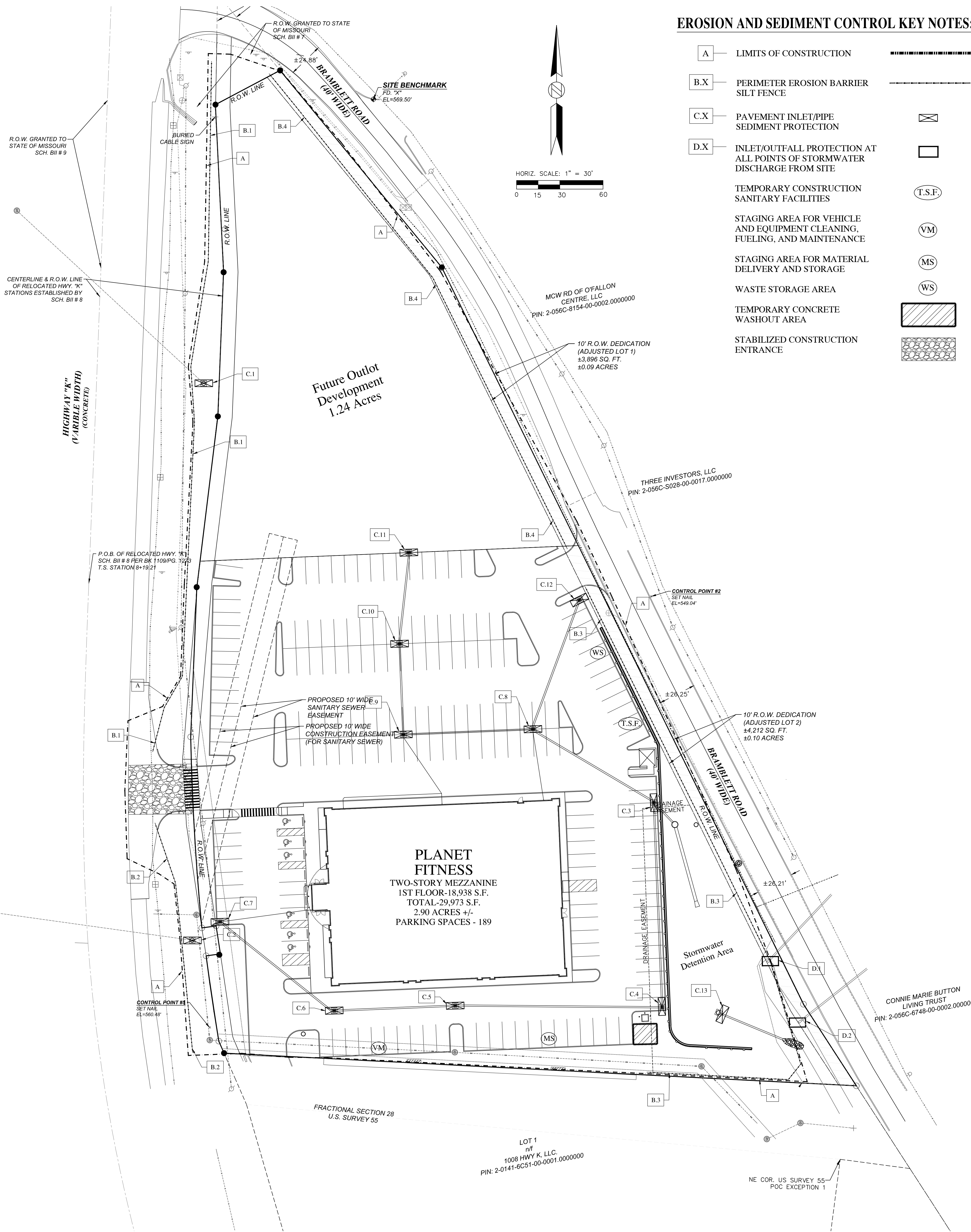
THE REGULATED DEVELOPMENT MUST KEEP A COPY OF THE EROSION CONTROL PLAN ON SITE AT ALL TIMES DURING CONSTRUCTION AND MAKE THE PLAN AVAILABLE FOR REVIEW BY A FIELD REPRESENTATIVE UPON REQUEST.

LAND DISTURBANCE NOTE:

THE TOTAL SITE DISTURBANCE FOR THIS DEVELOPMENT IS 4.39 ACRES. SINCE THIS IS MORE THAN ONE (1.00) ACRE, A NOTICE OF INTENT (NOI), LAND DISTURBANCE PERMIT WILL BE REQUIRED. THE CONTRACTOR WILL BE REQUIRED TO PROVIDE AND MEET THE EROSION AND SEDIMENT CONTROL MEASURES PER THE MISSOURI DEPARTMENT OF NATURAL RESOURCES AND FOLLOW THE STORMWATER POLLUTION PREVENTION PLAN.

STREET SWEEPING NOTE:

CONTRACTOR SHALL SWEEP/REMOVE ALL SEDIMENT AND DEBRIS WITHIN THE ROADWAY AT THE END OF EACH DAY



EROSION AND SEDIMENT CONTROL KEY NOTES:

- A — LIMITS OF CONSTRUCTION
- B.X — PERIMETER EROSION BARRIER SILT FENCE
- C.X — PAVEMENT INLET/PIPE SEDIMENT PROTECTION
- D.X — INLET/OUTFALL PROTECTION AT ALL POINTS OF STORMWATER DISCHARGE FROM SITE
- TEMPORARY CONSTRUCTION SANITARY FACILITIES
- STAGING AREA FOR VEHICLE AND EQUIPMENT CLEANING, FUELING, AND MAINTENANCE
- STAGING AREA FOR MATERIAL DELIVERY AND STORAGE
- WASTE STORAGE AREA
- TEMPORARY CONCRETE WASHOUT AREA
- STABILIZED CONSTRUCTION ENTRANCE

Architect:
MT STUDIO
 210 South Market St., Suite B
 Troy, OH 45373
 p 937.760.3884
 mtwiss@gomtstudio.com

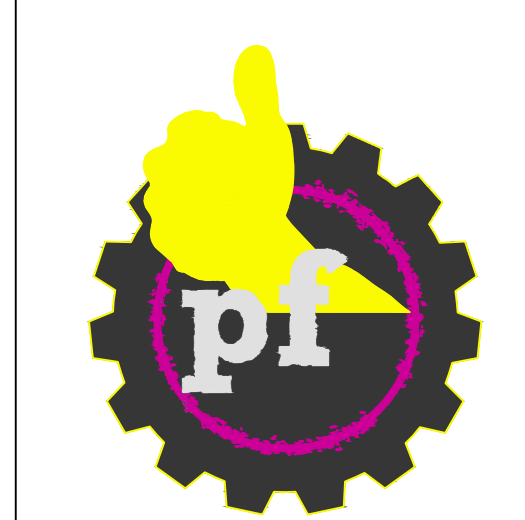
Civil Engineer:
RDC
REYLING DESIGN & CONSULTING
 4516 Boardwalk | Smithton, IL | 62285
 reylngdc@gmail.com

Missouri Firm License: 2016012969
 MO Certificate of Authority: LC001485066

RDC Project No. 20-115

STATE OF MISSOURI
 TODD J. REYLING
 REGISTERED PROFESSIONAL ENGINEER
 LICENSE EXPIRES - 12.31.2023
 DATE SIGNED - 12.01.2021

ENGINEER OF RECORD:
 Todd J. Reyling, PE
 Missouri PE 201102072



New Ground Up Building for:
PLANET FITNESS
 914 Highway K
 O'Fallon, MO 63366
 St. Charles County
 MTSTUDIO PROJECT NUMBER:

ISSUED / REVISED	DATE
ISSUED TO CITY	05.12.2021
REVISED PER CITY/NOT COMMENTS	07.20.2021
REVISED PER CITY/NOT COMMENTS	08.10.2021
REVISED FOR RETAINING WALL	11.18.2021
REVISED PER CITY COMMENTS	12.01.2021

Sediment and Erosion Control Plan
C600