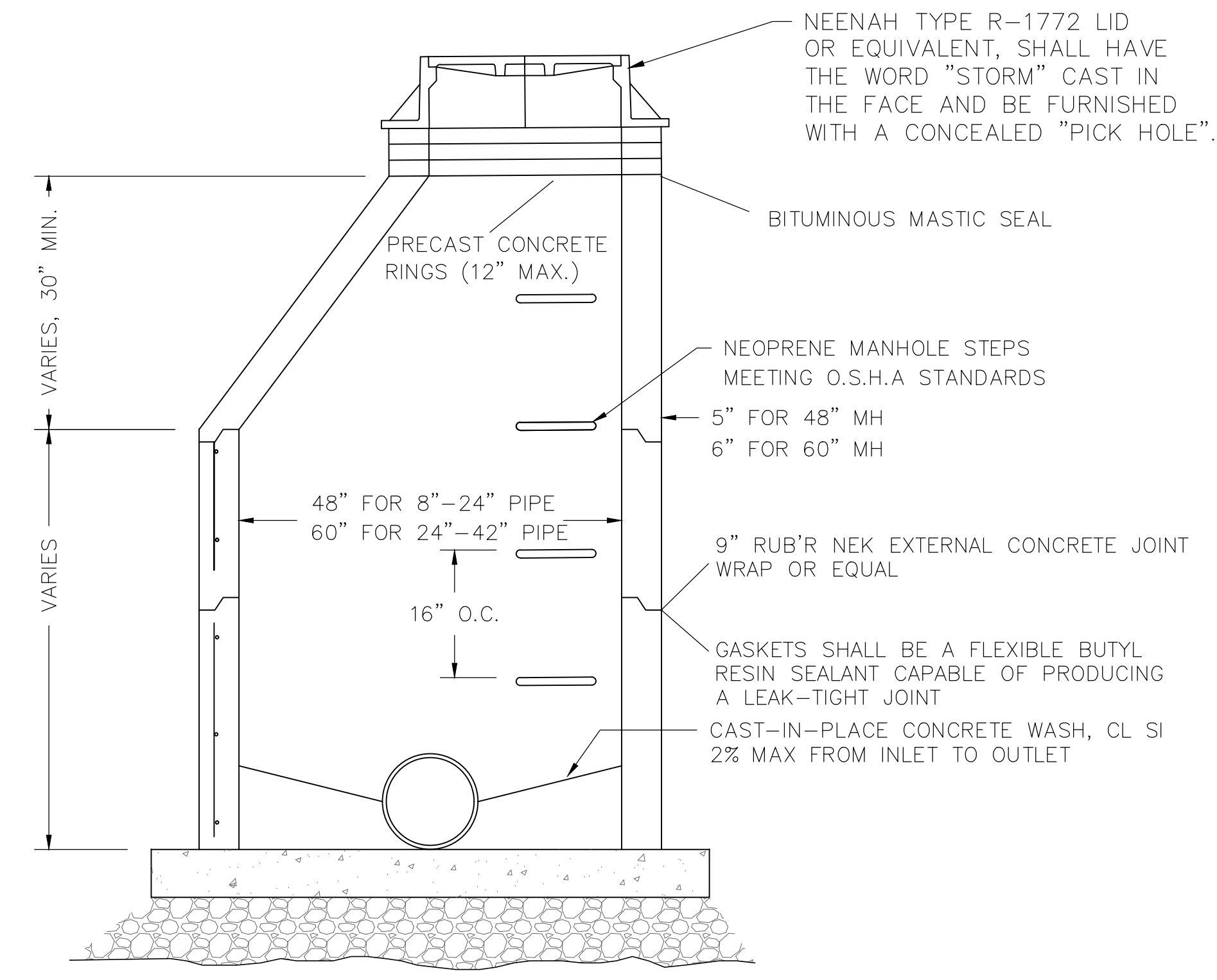


**PAVEMENT INLET DETAIL**

NOT TO SCALE

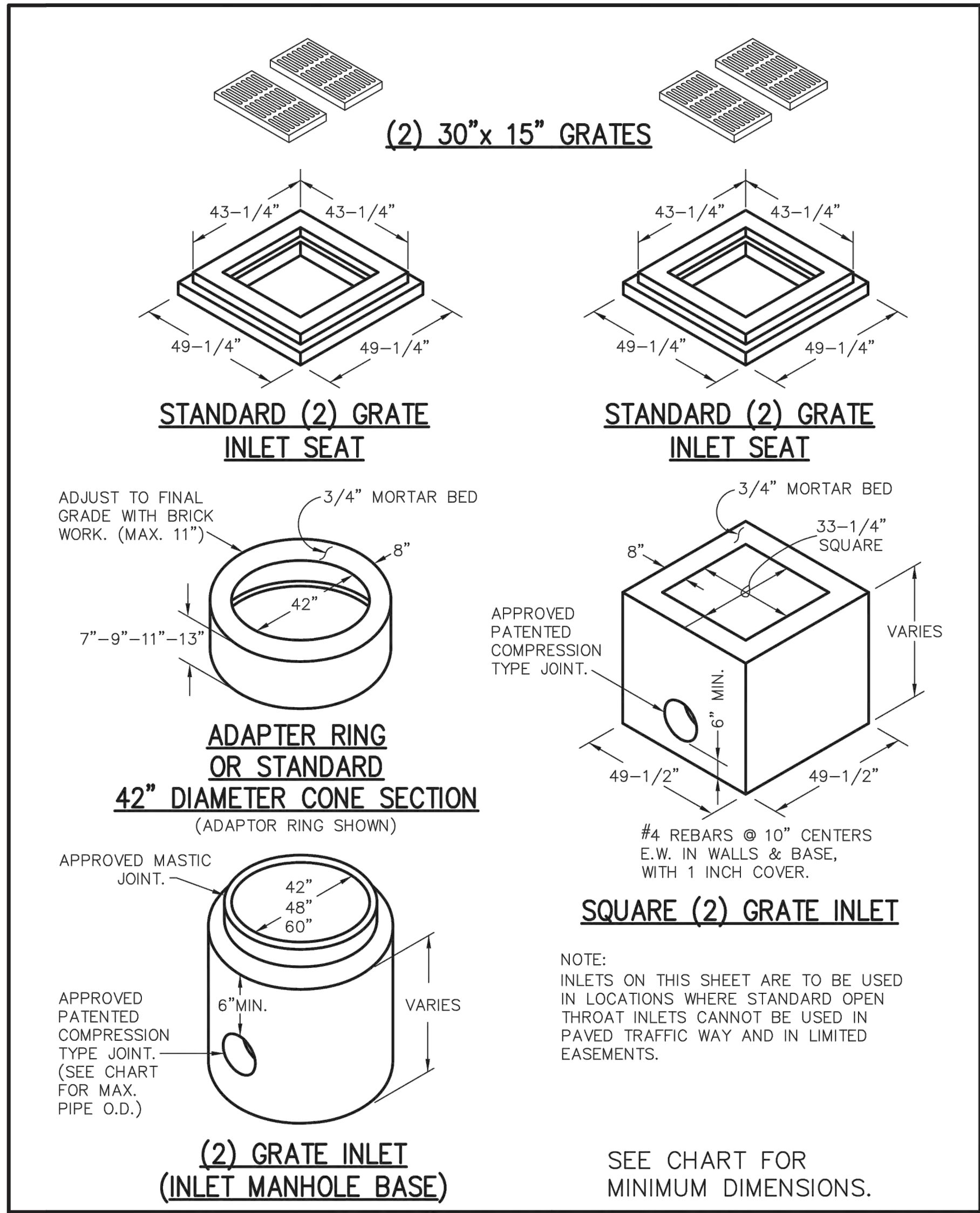
CONTRACTOR TO PROVIDE MARKING ON STORM SEWER INLETS PER THE CITY ALLOWED MARKERS AND ADHESIVE PROCEDURES ONLY AS SHOWN IN THE TABLE BELOW OR AN APPROVED EQUAL. "PEEL AND STICK" ADHESIVE PADS ARE NOT ALLOWED.

Manufacturer	Size	Adhesive	Style	Message (Part #)	Website
ACP International	3-7/8"	Epoxy	Crystal Cap	No Dumping Drains To Waterways (SD-W-CC)	<a href="http://www.acpinternational.com">www.acpinternational.com</a>
DAS Manufacturing, Inc.	4"	Epoxy	Standard Style	No Dumping Drains To Stream (#SDS)	<a href="http://www.dasmanufacturing.com">www.dasmanufacturing.com</a>



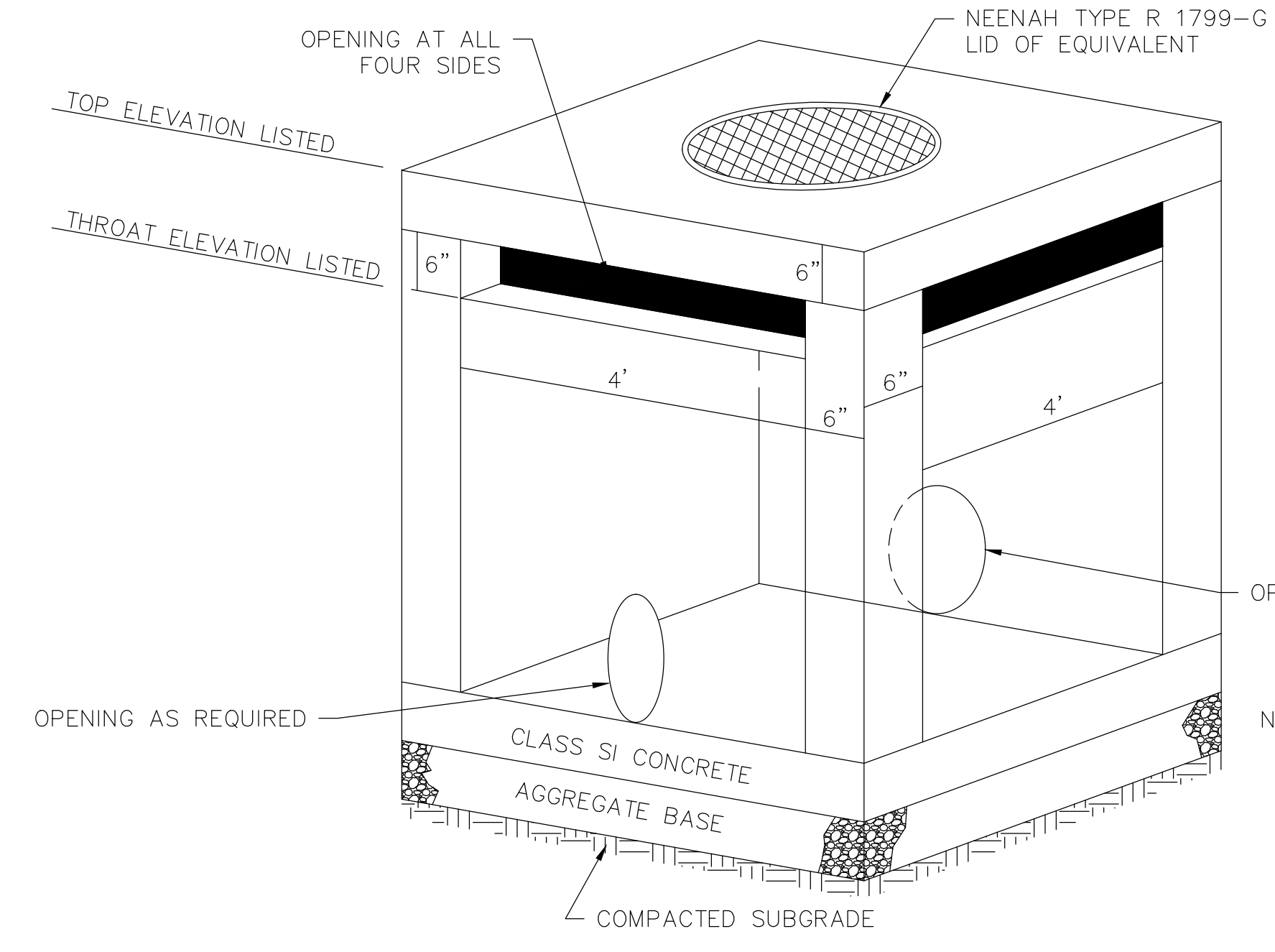
**STORM SEWER MANHOLE DETAIL**

NOT TO SCALE



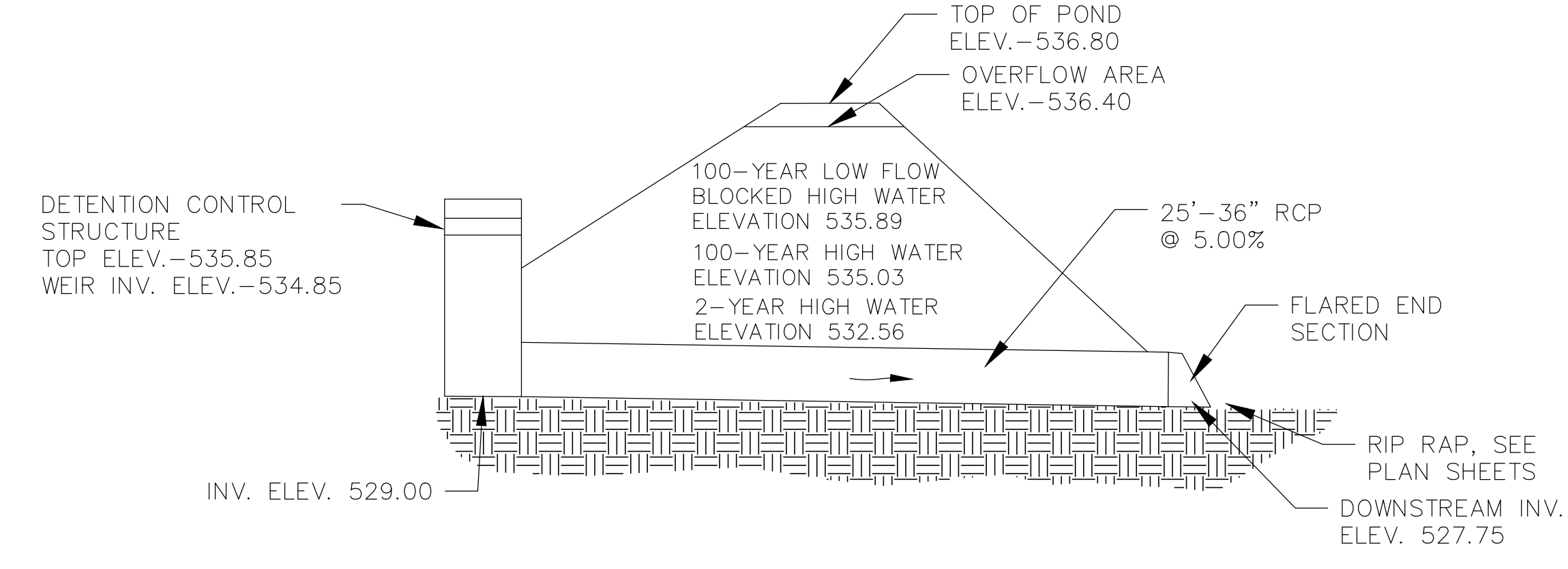
**METROPOLITAN ST. LOUIS SEWER DISTRICT**  
*Standard Details of Sewer Construction*  
 Dr. JLG/SAM  
 Ch. J.C.K. 2009 SHEET 35

2 GRATE INLETS  
 PRECAST CONCRETE



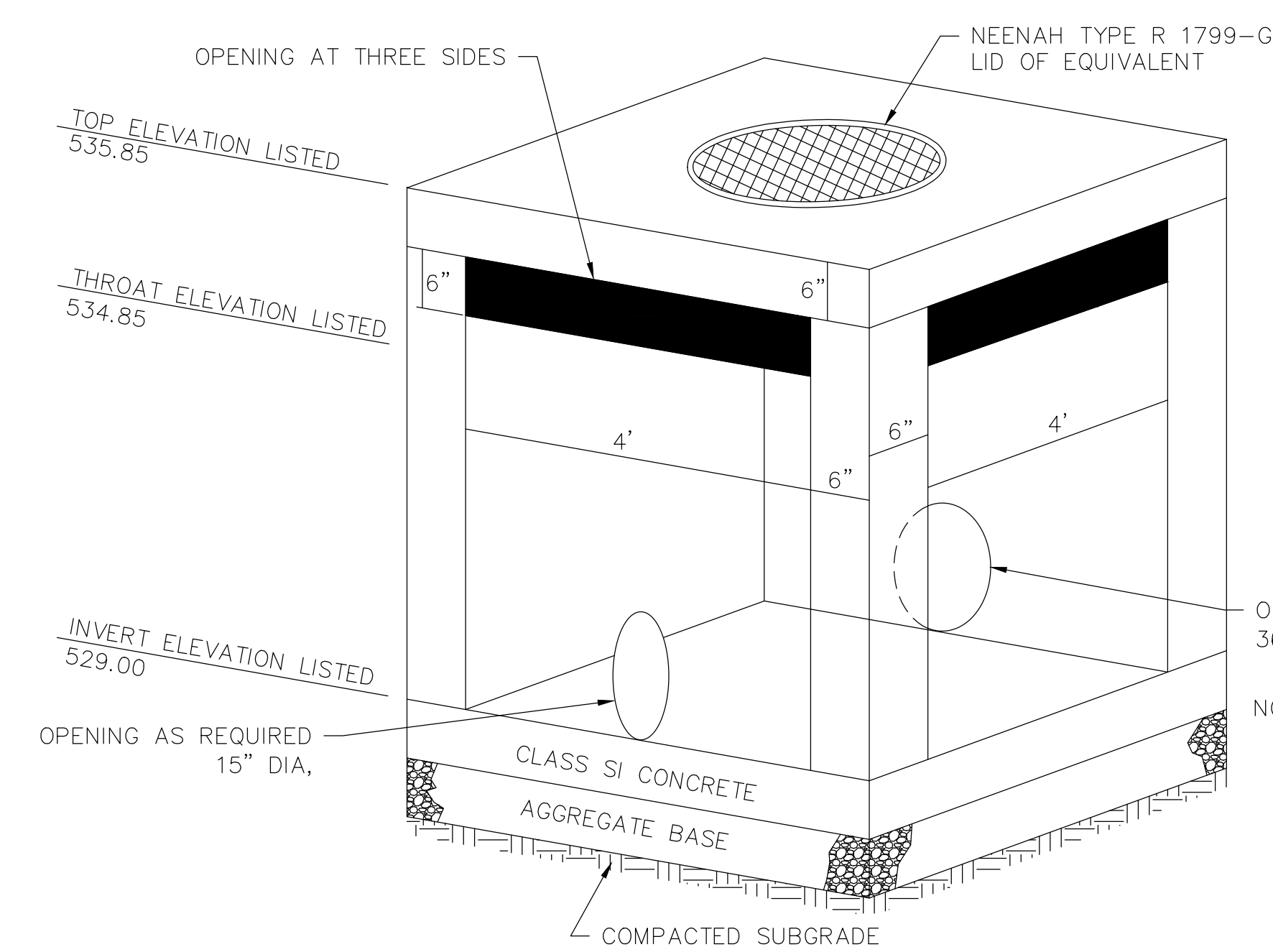
**AREA INLET STRUCTURE DETAIL**

NOT TO SCALE



**DETENTION BASIN OUTFALL - SECTION DETAIL**

NOT TO SCALE



**DETENTION CONTROL STRUCTURE DETAIL**

NOT TO SCALE



ISSUED / REVISED	DATE
ISSUED TO CITY	05.12.2021
REVISED PER CITY/NOT COMMENTS	07.20.2021
REVISED PER CITY/NOT COMMENTS	08.10.2021
REVISED FOR RETAINING WALL	11.18.2021
REVISED PER CITY COMMENTS	12.01.2021