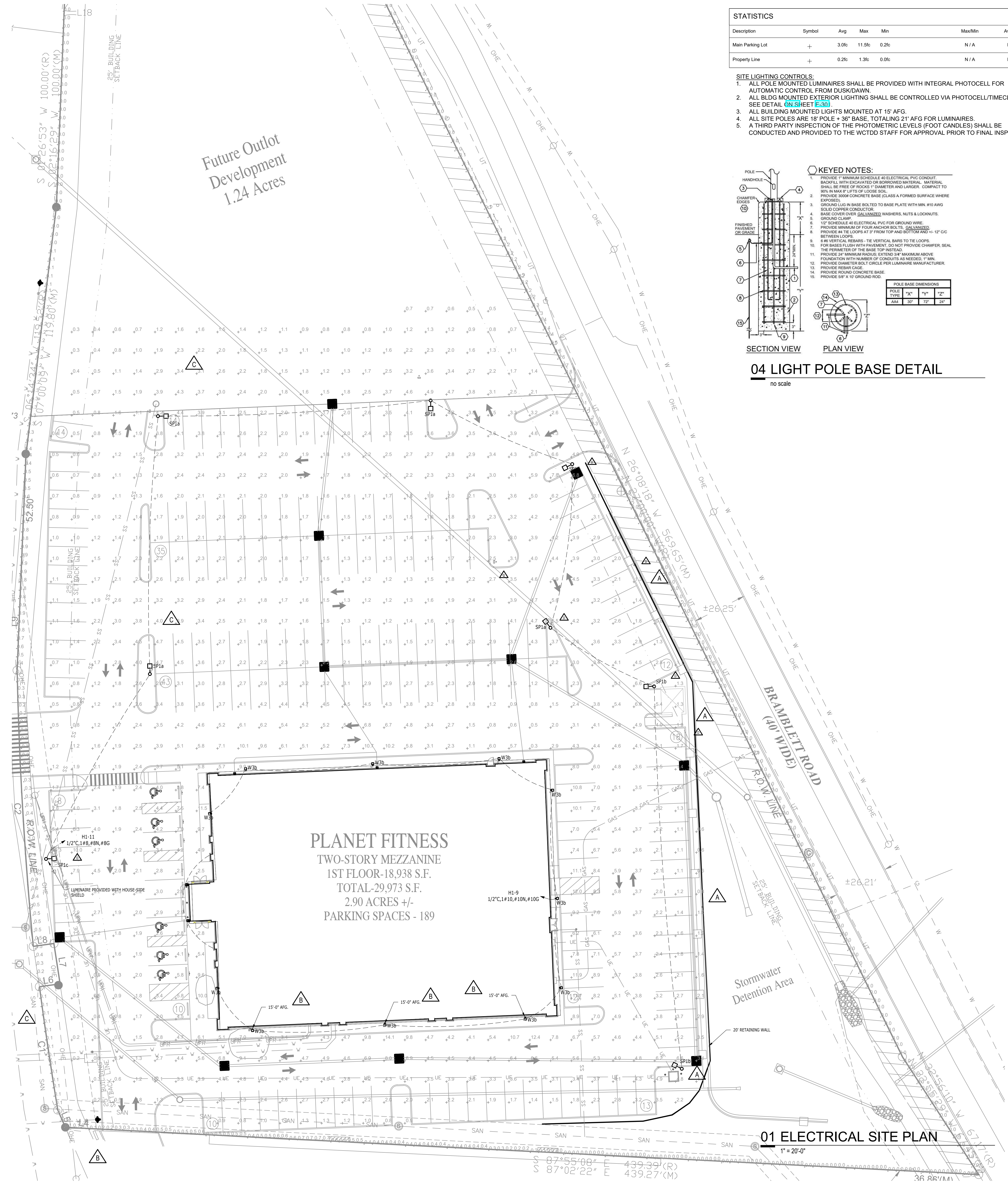
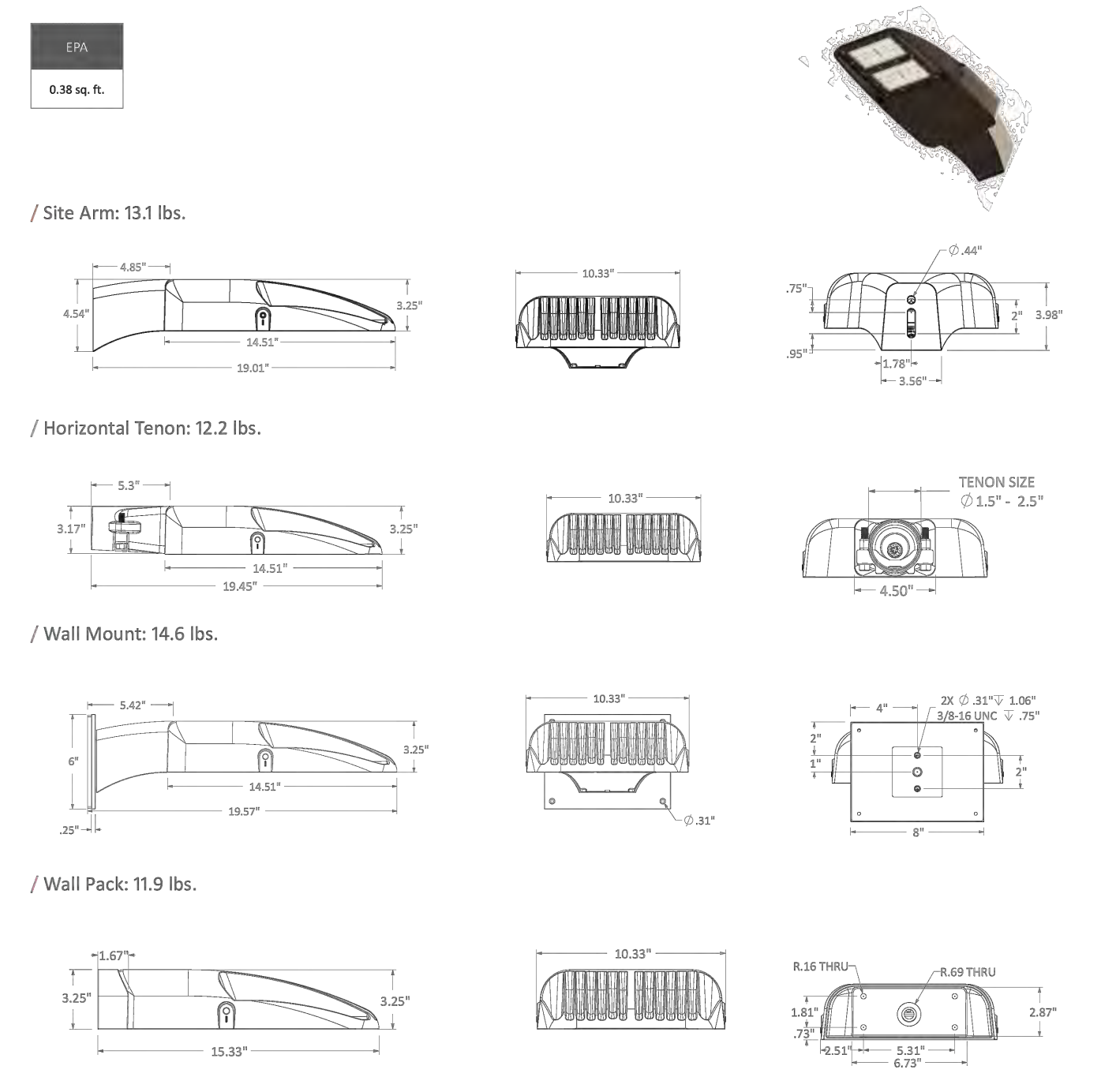
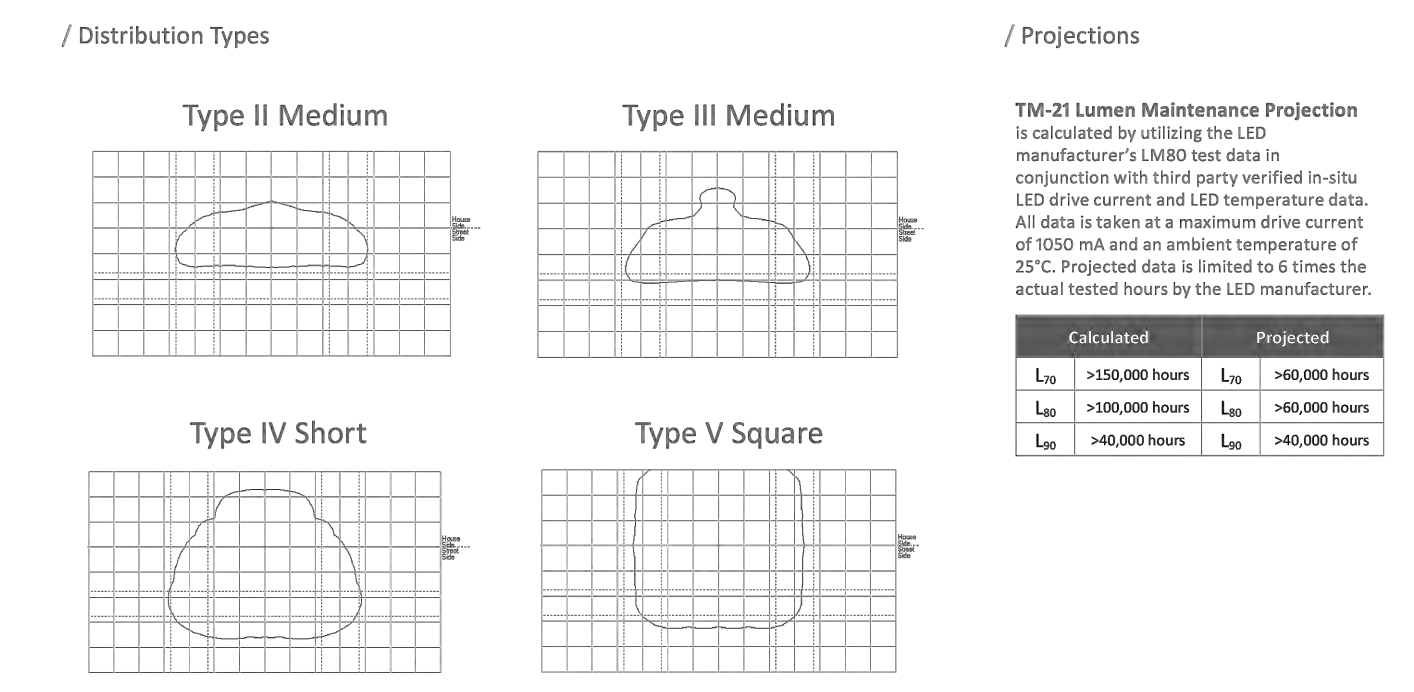
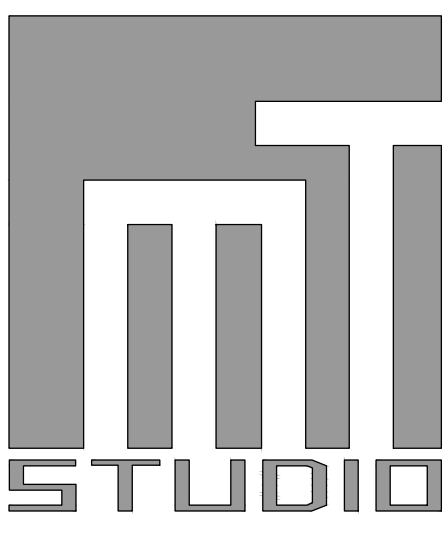
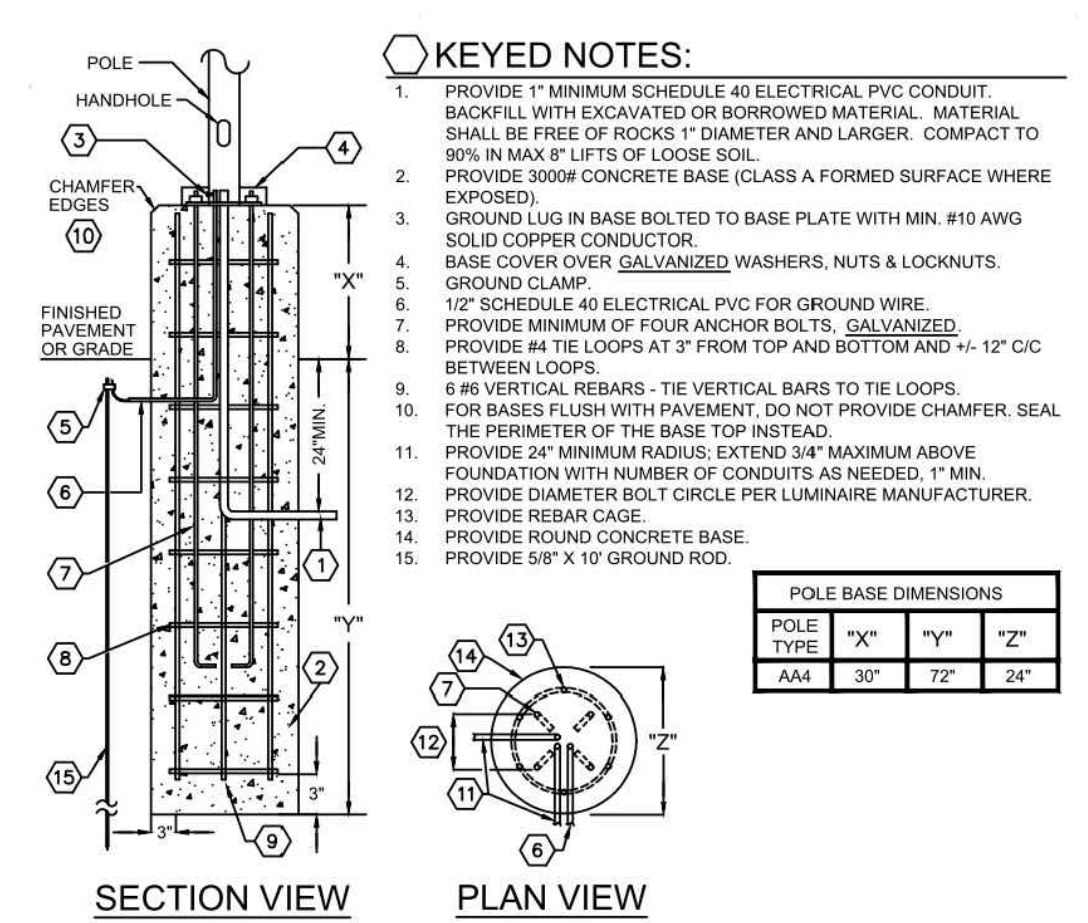


- / 120 - 277 V Standard; 347 - 480 V option available
- / 10 year warranty
- / Chip-scale package LEDs
- / 0 - 10 V dimming standard; DALI dimming option available
- / C136-41 compliant rotating photocell receptacle
- / Corrosion resistant powder-coated finish to minimum 3.0 mil thickness
- / Die cast aluminum housing designed for optimal thermal performance
- / 10000 hour salt spray compliant
- / Marine grade finish option available
- / DLC and DLC Premium listed
- / UL and IDA Dark Sky listed
- / IP65 rated optical and electrical chambers
- / 3G Bridge Vibration Rated (ANSI C136.31-2010)
- / Surge Protection (ANSI C136.2-2015)
- / 10kV SAA Standard; 20kV 10kA optional*
- / Suitable for wet locations
- / Rated for operation -40°C to 40°C; For 50°C, consult factory
- / Adjustable for 1/4" to 2 1/4" O.D. tenon



STATISTICS						
Description	Symbol	Avg	Max	Min	Max/Min	Avg/Min
Main Parking Lot	+	3.0%	11.5%	0.2%	N/A	N/A
Property Line	+	0.2%	1.3%	0.0%	N/A	N/A

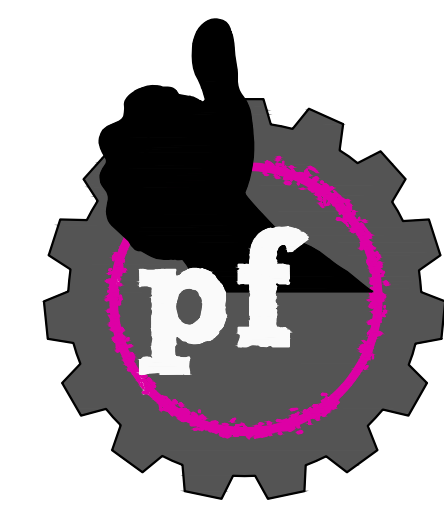
- SITE LIGHTING CONTROLS:**
- ALL POLE MOUNTED LUMINAIRES SHALL BE PROVIDED WITH INTEGRAL PHOTOCELL FOR AUTOMATIC CONTROL FROM DUSK/DOWN.
 - ALL BLDG MOUNTED EXTERIOR LIGHTING SHALL BE CONTROLLED VIA PHOTOCELL/TIMELOCK.
 - SEE DETAIL ON SHEET E300
 - ALL BUILDING MOUNTED LIGHTS MOUNTED AT 15' AFG.
 - ALL SITE POLES ARE 18' POLE + 36" BASE, TOTALING 21' AFG FOR LUMINAIRES.
 - A THIRD PARTY INSPECTION OF THE PHOTOMETRIC LEVELS (FOOT CANDLES) SHALL BE CONDUCTED AND PROVIDED TO THE WCTDD STAFF FOR APPROVAL PRIOR TO FINAL INSPECTION.



226 S. Market St.
Troy, OH 45373
937.980.9362



5828 Zanley St. Suite A
New Albany, OH 43054
614.741.4010



PLANET FITNESS
914 Highway K
O'Fallon, MO 63366

ISSUED / REVISED	DATE
ISSUED FOR PERMIT/BD	07.05.2021
ADDENDUM A	07.12.2021
ADDENDUM B	08.10.2021
ADDENDUM C	08.25.2021
ADDENDUM D	06.28.2022
BULLETIN 2	07.13.2023

Electrical Site Plan

ESL-100