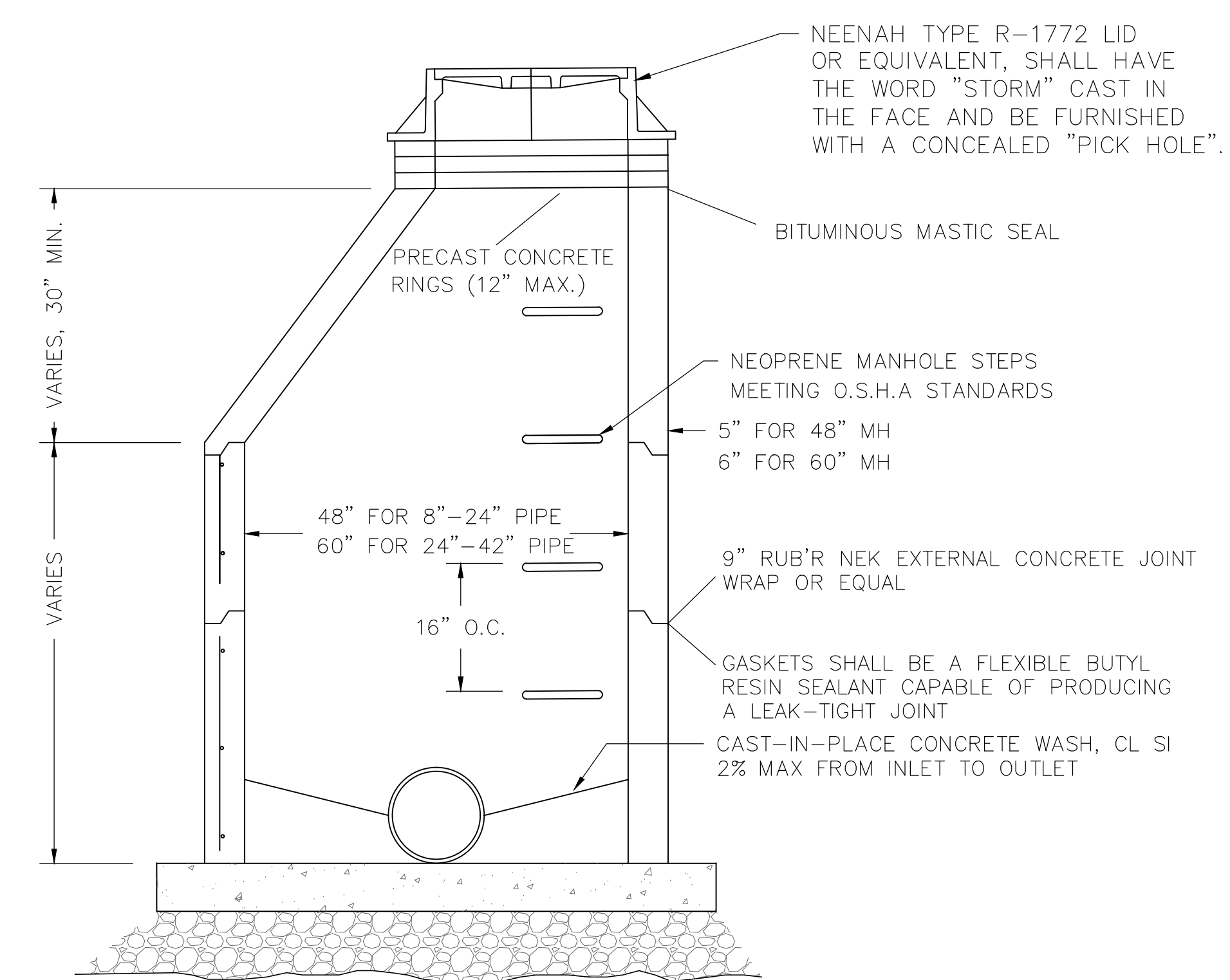


PAVEMENT INLET DETAIL

NOT TO SCALE

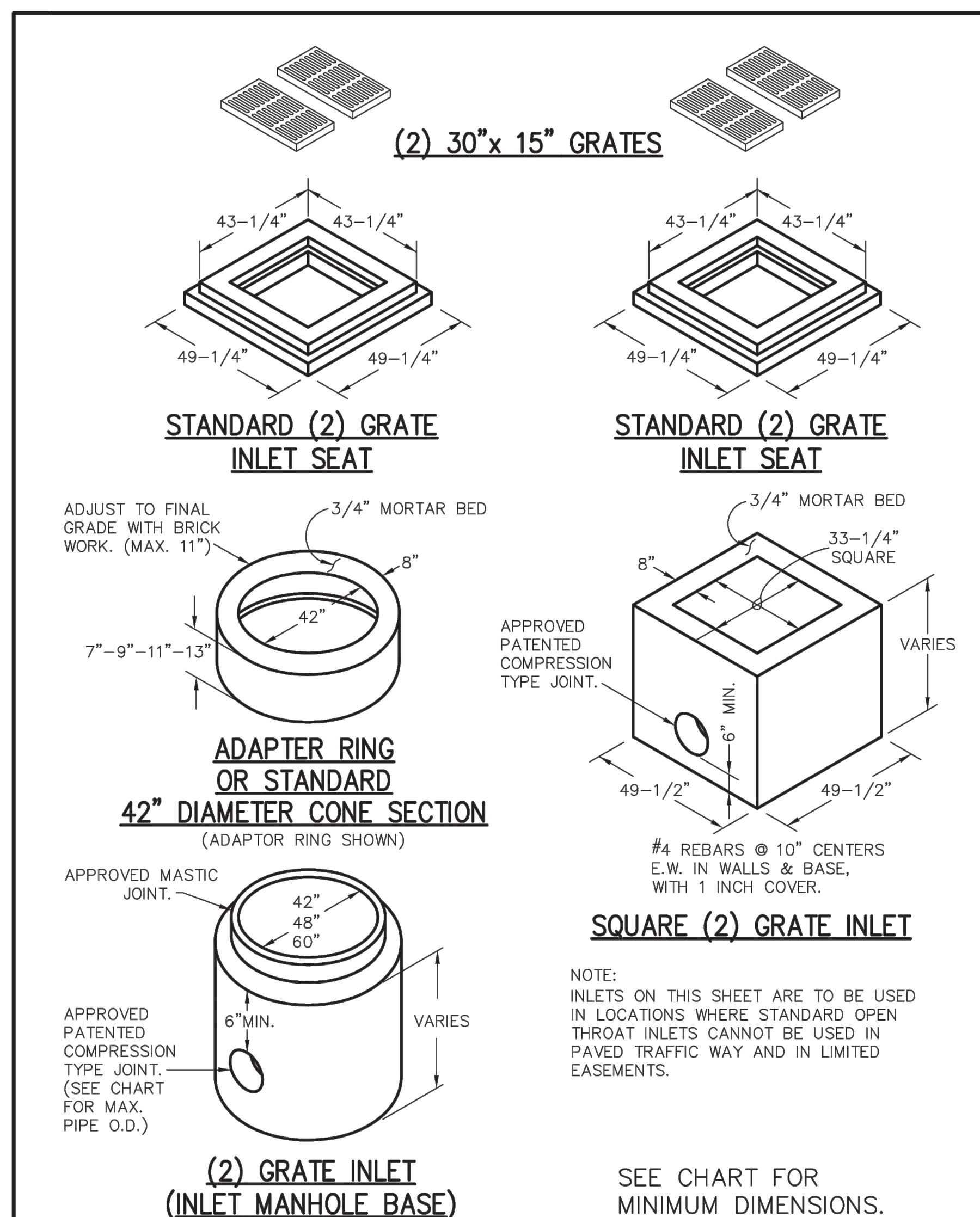
CONTRACTOR TO PROVIDE MARKING ON STORM SEWER INLETS PER THE CITY ALLOWED MARKERS AND ADHESIVE PROCEDURES ONLY AS SHOWN IN THE TABLE BELOW OR AN APPROVED EQUAL. "PEEL AND STICK" ADHESIVE PADS ARE NOT ALLOWED.

Manufacturer	Size	Adhesive	Style	Message (Part #)	Website
ACP International	3-7/8"	Epoxy	Crystal Cap	No Dumping Drains To Waterways (SD-W-CC)	www.acpinternational.com
DAS Manufacturing, Inc.	4"	Epoxy	Standard Style	No Dumping Drains To Stream (#SDS)	www.dasmanufacturing.com



STORM SEWER MANHOLE DETAIL

NOT TO SCALE

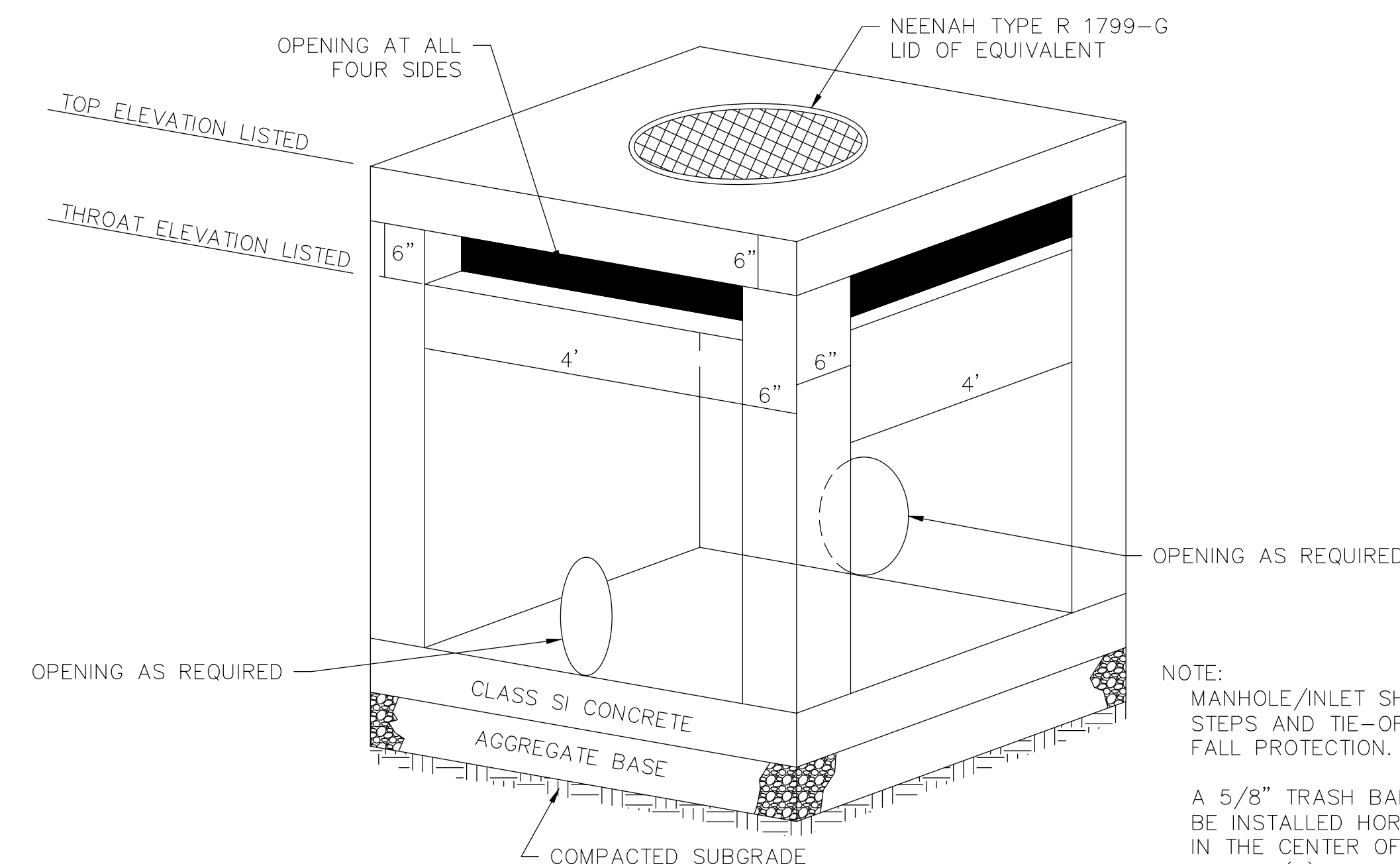


SEE CHART FOR MINIMUM DIMENSIONS.

2 GRATE INLETS
PRECAST CONCRETE

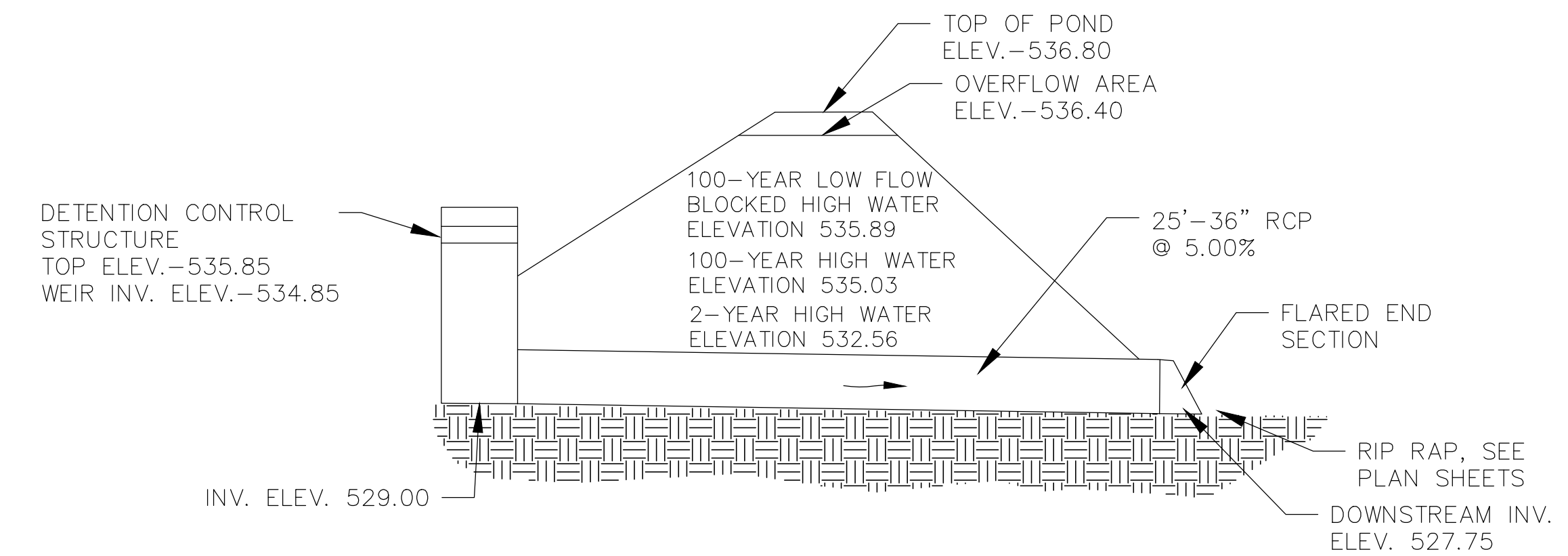
METROPOLITAN ST. LOUIS SEWER DISTRICT
Standard Details of Sewer Construction

Dr. JLG/SAM
Ch. J.C.K. 2009 SHEET 35



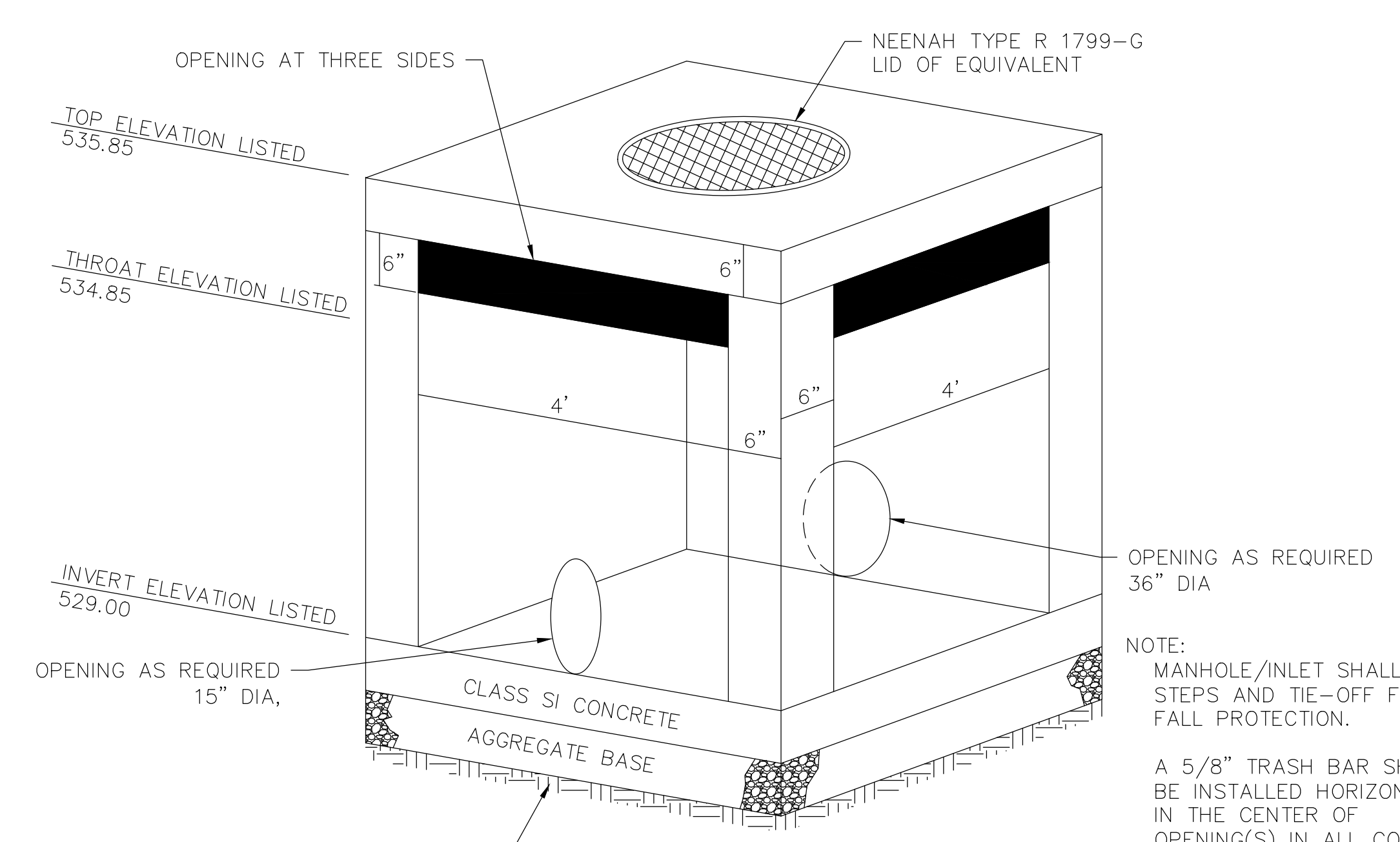
AREA INLET STRUCTURE DETAIL

NOT TO SCALE



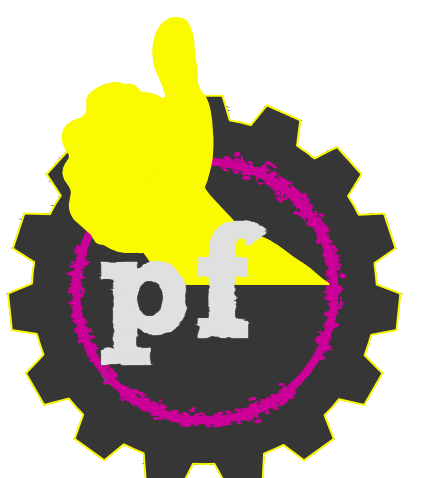
DETENTION BASIN OUTFALL - SECTION DETAIL

NOT TO SCALE



DETENTION CONTROL STRUCTURE DETAIL

NOT TO SCALE



ISSUED / REVISED	DATE
ISSUED TO CITY	05.12.2021
REVISED PER CITY/NOT COMMENTS	07.20.2021
REVISED PER CITY/NOT COMMENTS	08.10.2021
REVISED FOR RETAINING WALL	11.18.2021
REVISED PER CITY COMMENTS	12.01.2021