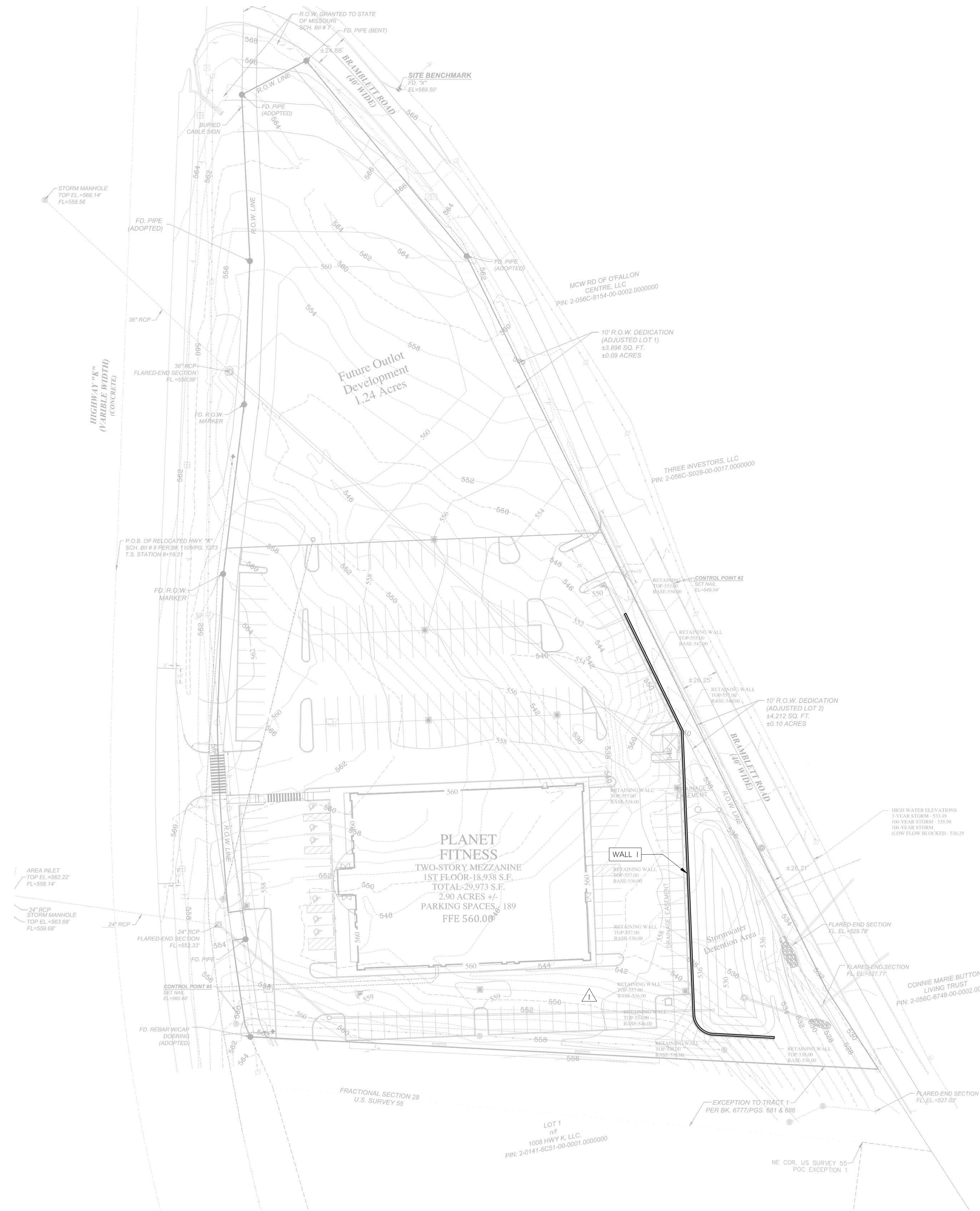


# PLANET FITNESS RETAINING WALL

# APPROVED

Jamie Greenlee

08/26/2021



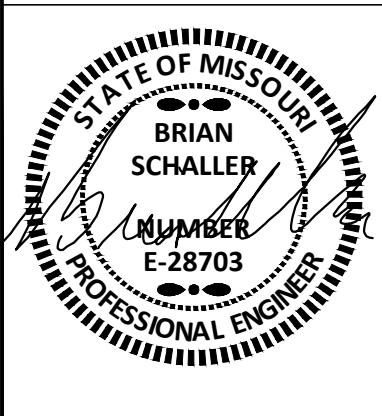
REV	DATE	DESCRIPTION
8-18-21		DESIGN REVISION
8-12-21		DESIGN REVISION

**ROSCH ENGINEERING**  
 18390 WINGS CORPORATE DRIVE  
 CHESTERFIELD, MO 63005  
 PHONE: 636-519-7770  
 FAX: 636-532-7773

MO CERTIFICATE OF AUTHORITY #E-2012039663

PLANET FITNESS  
 O'FALLON, MO  
 RETAINING WALL  
 COVER SHEET

DESIGNED:	BCS
DRAWN:	JTM
DESIGN ENGINEER:	JWH
REVIEWED:	BCS
DATE:	7-12-21
JOB NO.:	21-0530
SHEET:	COVER



STRUCTURAL DESIGN HEREIN REPRESENTS A FINISHED STRUCTURE. THE GENERAL CONTRACTOR/OWNER SHALL PROVIDE ALL INTERIM BRACING, SHORING, INTERIM DRAINAGE PROVISIONS, DRAINAGE DIVERSION AND EROSION PROTECTION REQUIRED UNTIL FINAL CAPPING, PAVING, CURBING AND COMPLETION OF FINAL STORM DRAIN SYSTEM IS COMPLETE.