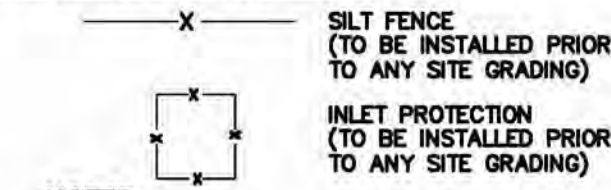


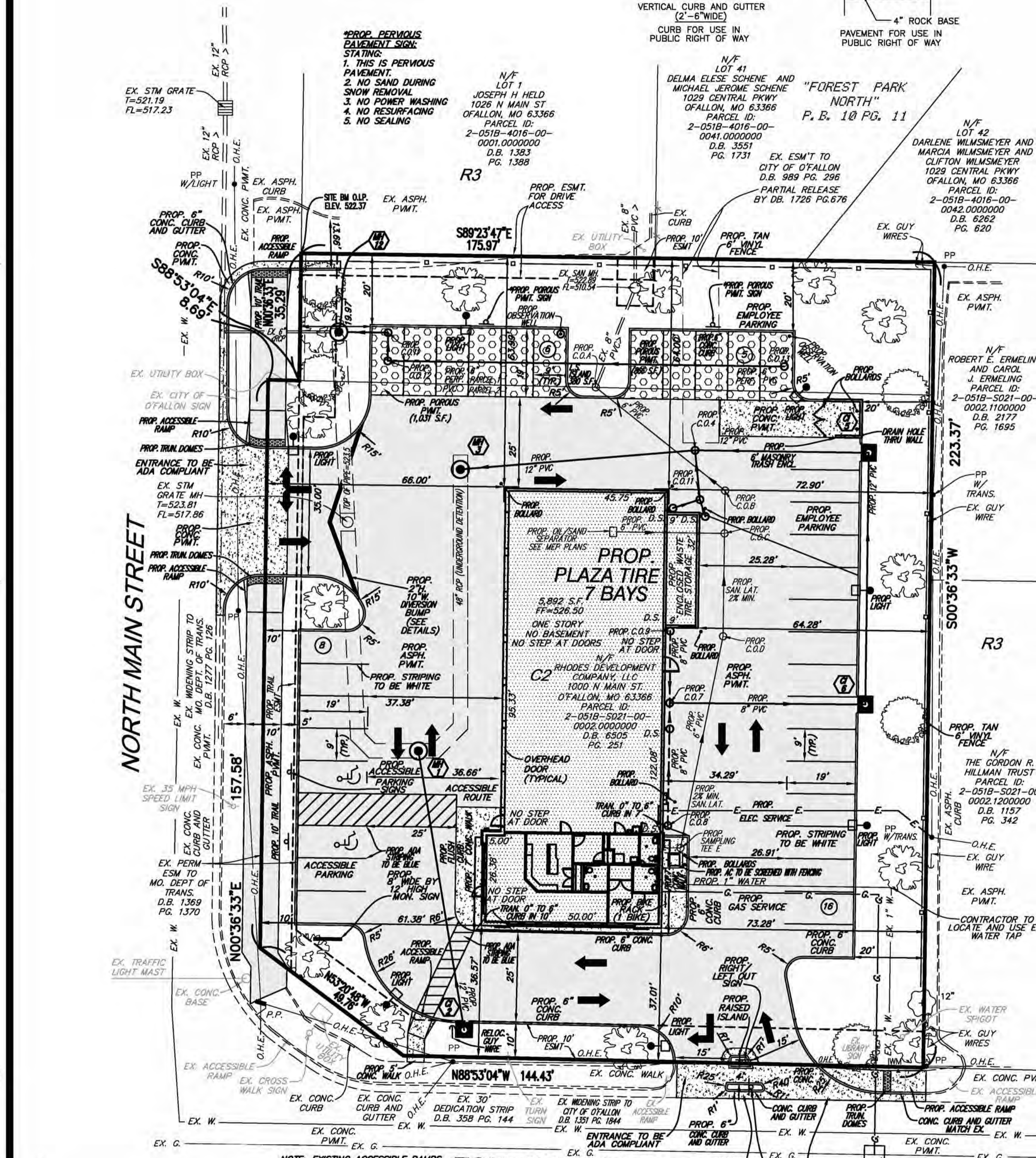
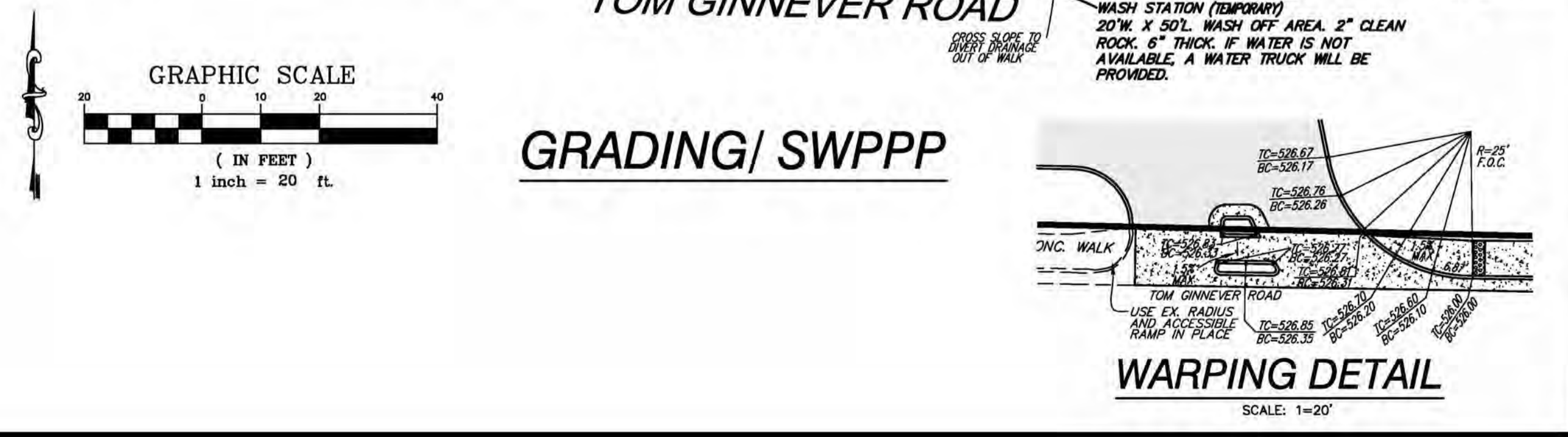
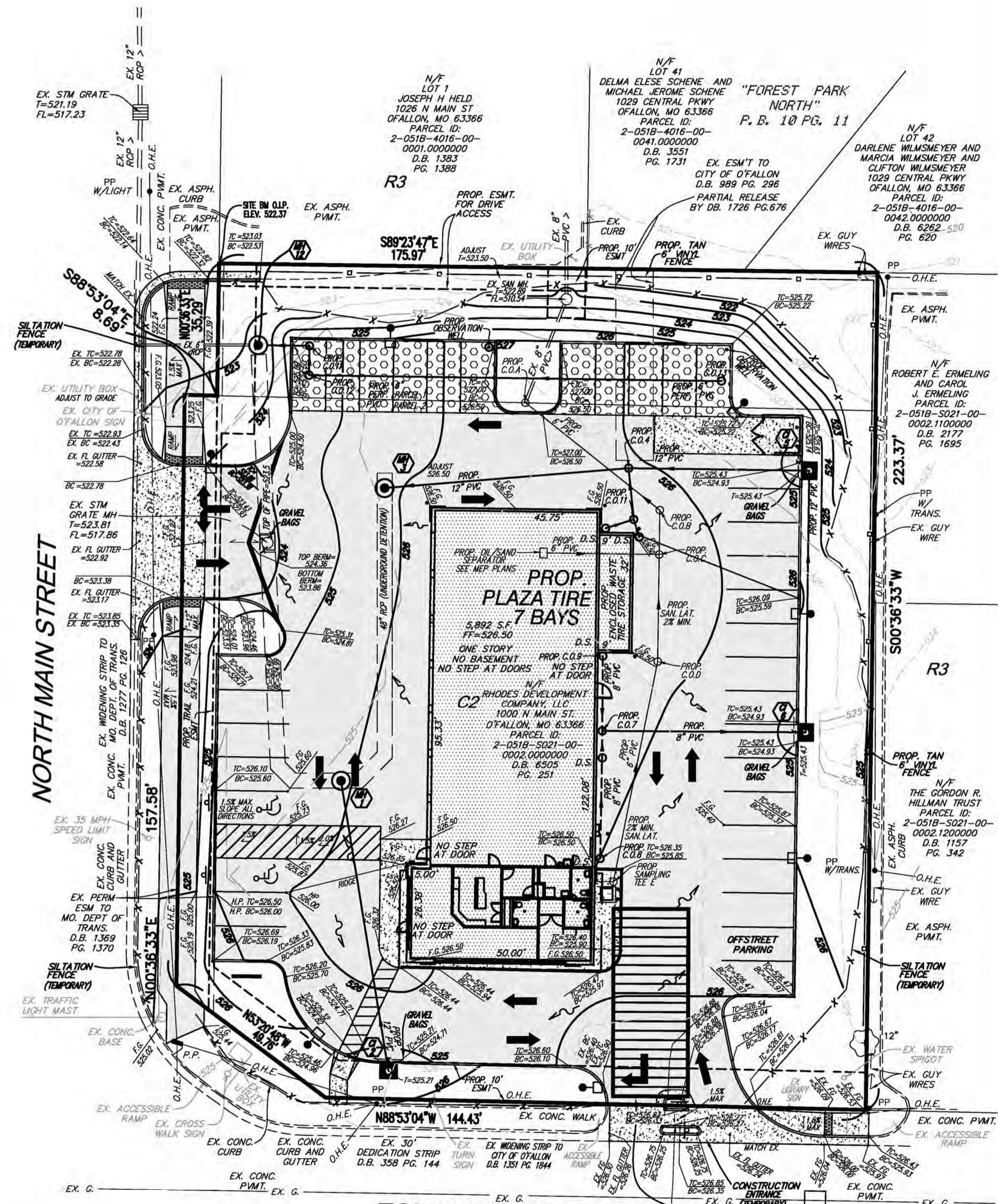
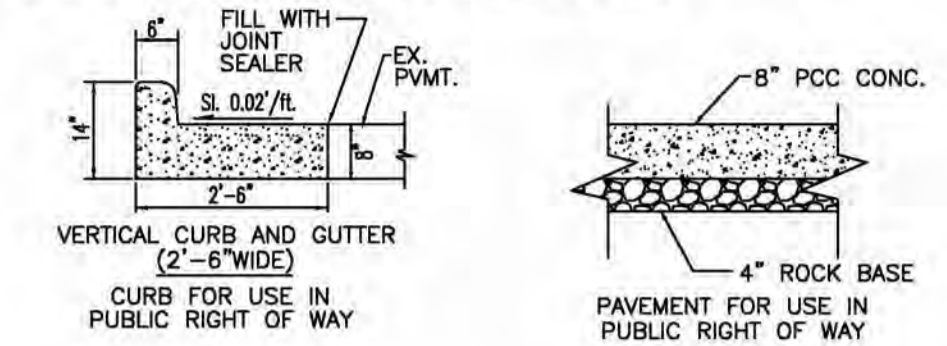
EROSION CONTROL LEGEND



- NOTES:**
1. ALL DISTURBED AREAS TO BE SEEDED AND MULCHED.
 2. SEDIMENT SHALL BE WASHED FROM ALL VEHICLES AT WASHDOWN STATION PRIOR TO LEAVING SITE. NO TRACKING OF MUD ONTO ROADS SHALL BE ALLOWED.

SITE PLAN NOTES:

1. UNDERGROUND UTILITIES HAVE BEEN PLOTTED FROM AVAILABLE INFORMATION AND THEREFORE, THEIR LOCATIONS MUST BE CONSIDERED APPROXIMATE ONLY. THE VERIFICATION OF THE LOCATION OF ALL UNDERGROUND UTILITIES, EITHER SHOWN OR NOT SHOWN ON THESE PLANS, SHALL BE THE RESPONSIBILITY OF THE CONTRACTOR AND SHALL BE LOCATED PRIOR TO ANY GRADING OR CONSTRUCTION OF IMPROVEMENTS.
2. THE CONTRACTOR IS RESPONSIBLE FOR THE INSTALLATION AND MAINTENANCE OF ALL SILTATION CONTROL SHOWN AND OTHER EROSION CONTROL DEVICES THAT MAY BE REQUIRED.
3. THE REMOVAL AND REPLACEMENT, OR REHABILITATION OF THE EXISTING STRUCTURE(S) WILL BE DETERMINED BY THE FIELD INSPECTOR. IF THE STRUCTURE IS DETERMINED TO REMAIN IN PLACE, THE TOP SHALL BE ADJUSTED TO GRADE IF NEEDED.
4. ALL CONSTRUCTION SHALL BE PER THE MOST CURRENT DETAILS LOCATED IN THE DESIGN CRITERIA MANUAL AND/OR THE SEDIMENT AND EROSION CONTROL MANUAL.
5. ALL DIMENSIONS ARE TO FACE OF CURB OR EDGE OF PAVEMENT, UNLESS OTHERWISE NOTED.
6. REFER TO ELECTRICAL SITE PLAN FOR ALL SITE ELECTRICAL DETAILS.
7. LIGHT POLE BASES TO BE 24" MIN. FROM BACK OF CURB TO FACE OF BASE.
8. NO LIGHT POLE TO BE TALLER THAN 16' FROM GROUND INCLUDING HEIGHT OF CONC. BASE.
9. CONTRACTOR TO VERIFY ROOF DOWN SPOUT LOCATIONS PRIOR TO INSTALLATION OF CONNECTOR LINES.
10. ALL SPOTS ARE TO BACK OF CURB UNLESS OTHERWISE SPECIFIED.
11. REMOVE AND REPLACE SIDEWALK OR CURB AND GUTTER TO NEXT JOINT.
12. ALL SEWER LINES TO BE CONSTRUCTED FROM DOWNSTREAM END FIRST.
13. REFER TO ARCHITECTURAL PLANS FOR BOLLARD DETAILS.



Revised	Comment
2/17/16	1ST SUB TO CITY
2/23/16	REV. PER CITY CHECK LIST
4/7/16	REV. PER CITY COMMENTS
5/12/16	REV. PER CITY COMMENTS
6/13/16	REV. PER CITY COMMENTS

Missouri Office
6000 Collins Rd. #100
St. Louis, MO 63112
Tel: (314) 947-9819
Fax: (314) 948-1718

Engineered By: **DOERING ENGINEERING**
CIVIL ENGINEERING • PLANNING • SURVEYING

Seal
Professional Engineer
6/13/16
MARK A. DOERING
CIVIL ENGINEER E-23059
6/13/16
MO. EXPIRATION DATE:
DECEMBER 31 2014
IL. EXPIRATION DATE:
DECEMBER 31 2013
MO. CORPORATE
LICENSE NO. 001947
IL. CORPORATE
LICENSE NO. 184.003035

PLAZA TIRE
1000 N MAIN ST.
O'FALLON, MO 63366
GRADING/ SWPPP/ SITE PLAN

Date: 2/17/16
Project Number: 15030
File Name: 15030CD
Drawn By: JAB
Check By: MAD
Sheet
C5