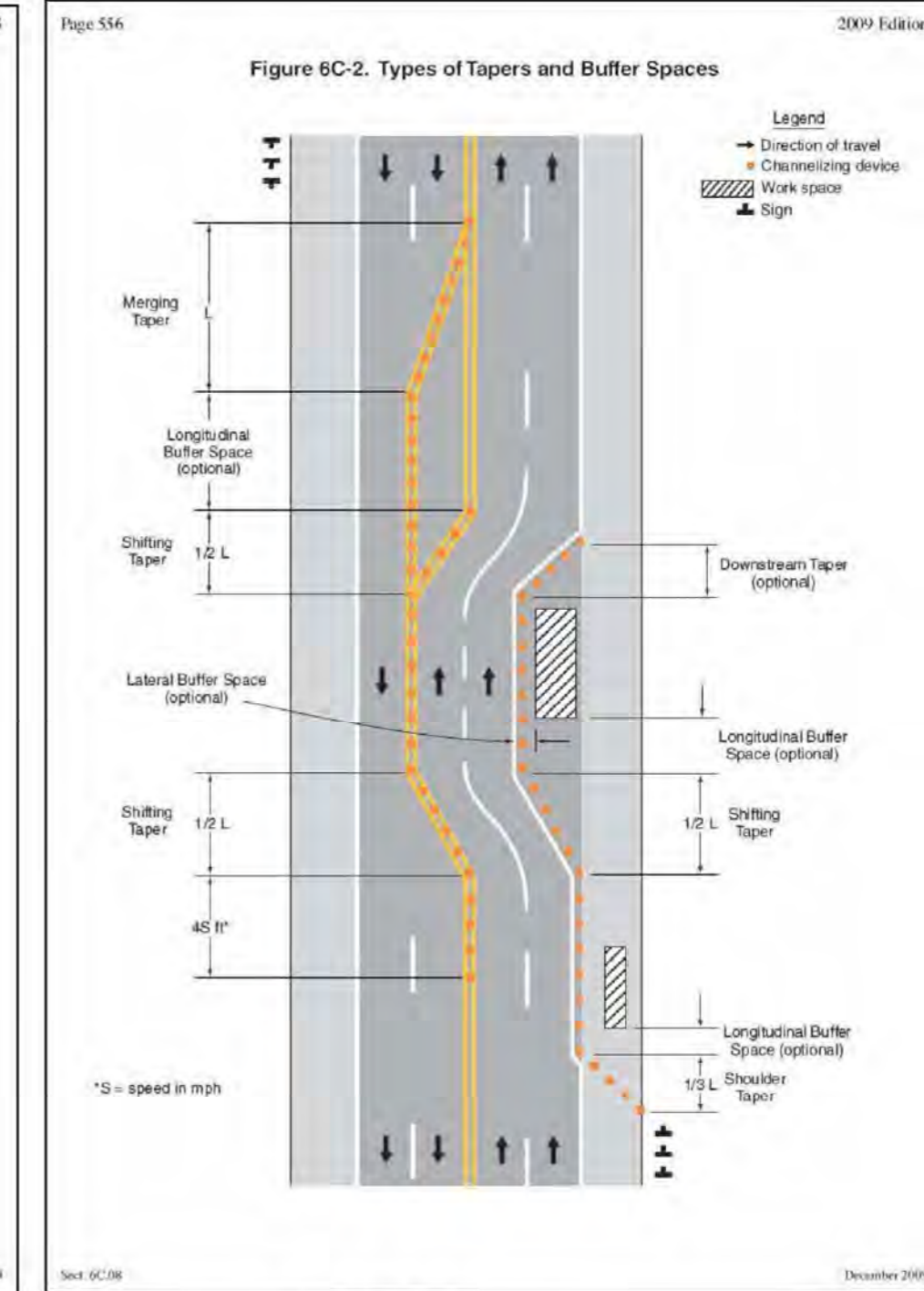
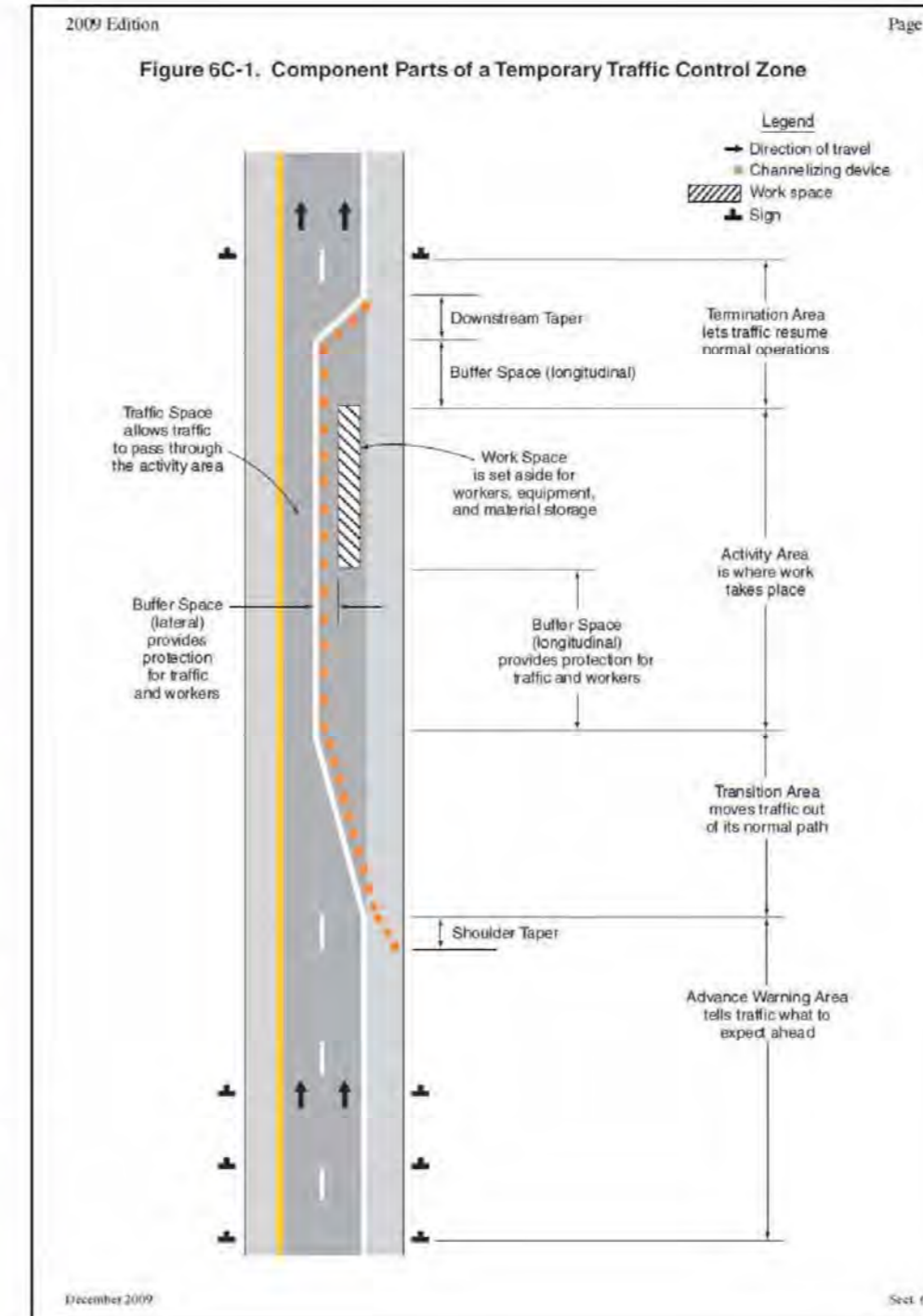
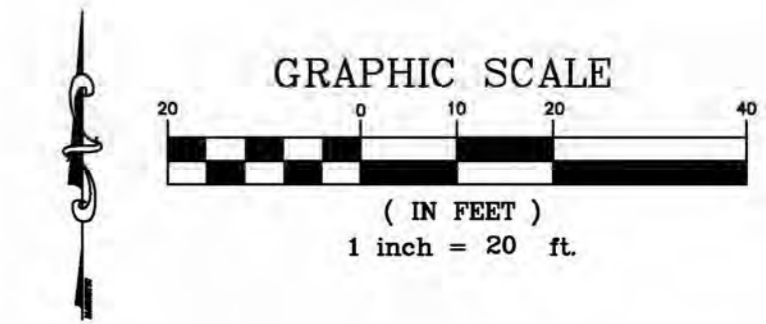


TRAFFIC CONTROL PLAN NOTES:

1. UNDERGROUND UTILITIES HAVE BEEN PLOTTED FROM AVAILABLE INFORMATION AND THEREFORE, THEIR LOCATIONS MUST BE CONSIDERED APPROXIMATE ONLY. THE VERIFICATION OF THE LOCATION OF ALL UNDERGROUND UTILITIES, EITHER SHOWN OR NOT SHOWN ON THESE PLANS, SHALL BE THE RESPONSIBILITY OF THE CONTRACTOR AND SHALL BE LOCATED PRIOR TO ANY GRADING OR CONSTRUCTION OF IMPROVEMENTS.
2. ALL DIMENSIONS ARE TO FACE OF CURB OR EDGE OF PAVEMENT, UNLESS OTHERWISE NOTED.
3. ALL CONSTRUCTION SHALL BE PER THE MOST CURRENT DETAILS LOCATED IN THE GOVERNING MUNICIPAL DETAIL BOOKS.
4. TRAFFIC CONTROL SIGNS SHALL BE COVERED WHEN CONDITION DOES NOT EXIST.
5. REFER TO THE MANUAL ON UNIFORM TRAFFIC CONTROL DEVICES FOR ADDITIONAL INFORMATION AND DETAILS.



Page 554

Table 6C-1. Recommended Advance Warning Sign Minimum Spacing

Road Type	Distance Between Signs**		
	A	B	C
Mainline speed*	100 feet	300 feet	100 feet
Urban high speed*	350 feet	350 feet	350 feet
Rural	300 feet	900 feet	900 feet
Expressway / Freeway	1,000 feet	1,500 feet	2,540 feet

* Speed category to be determined by the highway agency.
** The column headings A, B, and C are the dimensions shown in Figures 6C-1 through 6C-4. The A dimension is the distance from the location or point of restriction to the first sign. The B dimension is the distance between the first and second signs. The C dimension is the distance between the second and third signs. The "third sign" is the sign in a three-sign series that is closest to the TTC zone. The "third sign" is the sign that is furthest upstream from the TTC zone.

Page 556

Table 6C-2. Stopping Sight Distance as a Function of Speed

Speed*	Distance
20 mph	135 feet
25 mph	180 feet
30 mph	240 feet
35 mph	300 feet
40 mph	375 feet
45 mph	465 feet
50 mph	570 feet
55 mph	690 feet
60 mph	825 feet
65 mph	975 feet
70 mph	1,140 feet
75 mph	1,320 feet

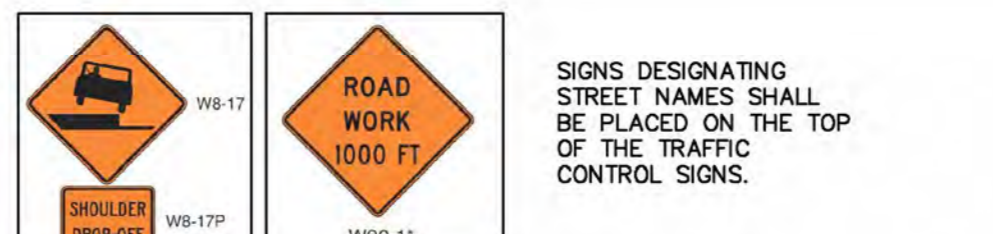
* Speed in mph

Table 6C-3. Taper Length Criteria for Temporary Traffic Control Zones

Type of Taper	Taper Length
Shoulder Taper	100 feet
Longitudinal Buffer Space (optional)	100 feet
Shifting Taper	100 feet
Lateral Buffer Space (optional)	100 feet
Downstream Taper (optional)	100 feet
Longitudinal Buffer Space (optional)	100 feet
Shoulder Taper	100 feet

Table 6C-4. Formulas for Determining Taper Length

Speed (S)	L	S
20 mph	100	100
25 mph	150	150
30 mph	200	200
35 mph	250	250
40 mph	300	300
45 mph	350	350
50 mph	400	400
55 mph	450	450
60 mph	500	500
65 mph	550	550
70 mph	600	600
75 mph	650	650



SIGNS DESIGNATING STREET NAMES SHALL BE PLACED ON THE TOP OF THE TRAFFIC CONTROL SIGNS.

* AHEAD CAN BE USED IN LIEU OF 1000 FT.

Revised	Comment
2/17/16	1ST SUB TO CITY
2/23/16	REV. PER CITY CHECK LIST
4/7/16	REV. PER CITY COMMENTS
5/12/16	REV. PER CITY COMMENTS
6/13/16	REV. PER CITY COMMENTS

Engineered By:

DOERING ENGINEERING

CIVIL ENGINEERING • PLANNING • SURVEYING

Missouri Office
6000 Collins Rd.
St. Louis, MO 63112
Telephone: (314) 497-8313
Fac: (314) 848-1718

Seal

MARK A. DOERING
CIVIL ENGINEER E-23059
6/13/16
MO. EXPIRATION DATE:
DECEMBER 31 2014
IL. EXPIRATION DATE:
DECEMBER 31 2013
MO. CORPORATE
LICENSE NO. 001347
IL. CORPORATE
LICENSE NO. 184.03036

PLAZA TIRE
1000 N MAIN ST.
O'FALLON, MO 63366
TRAFFIC HANDLING PLANS

Date: 2/17/16
Project Number: 15030D
File Name: 15030CD
Drawn By: JAB
Check By: MAD
C12