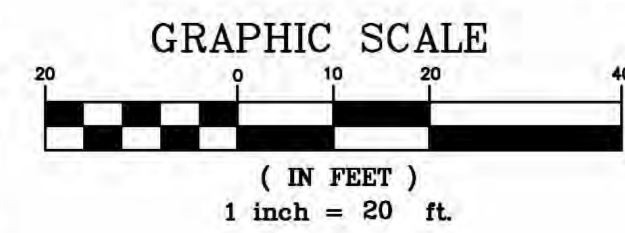
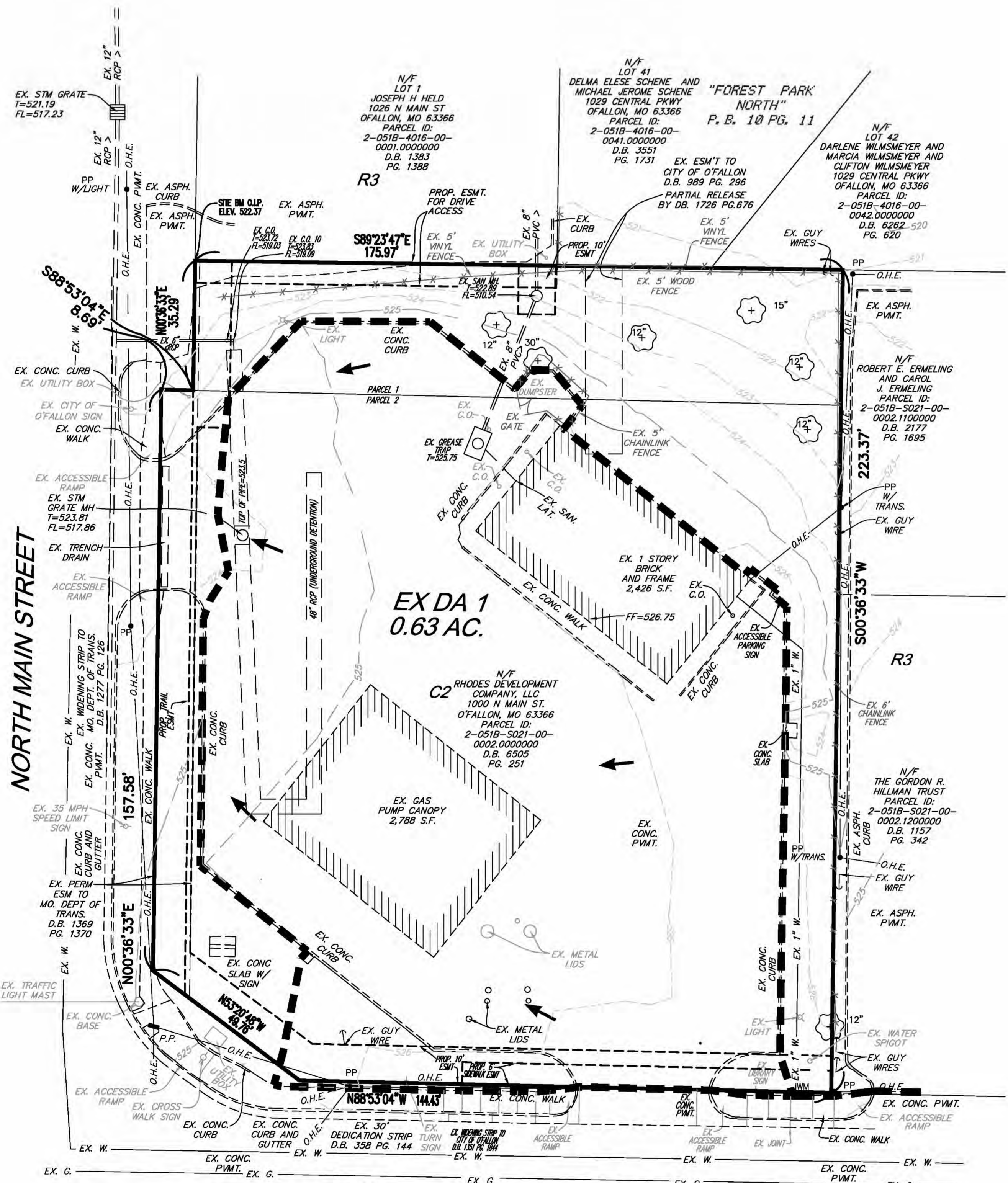


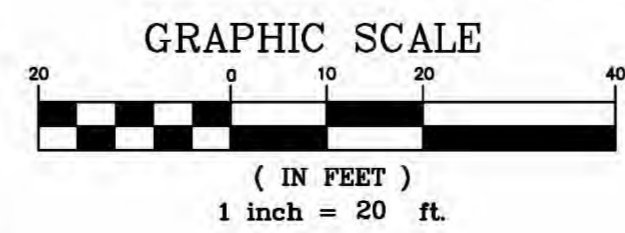
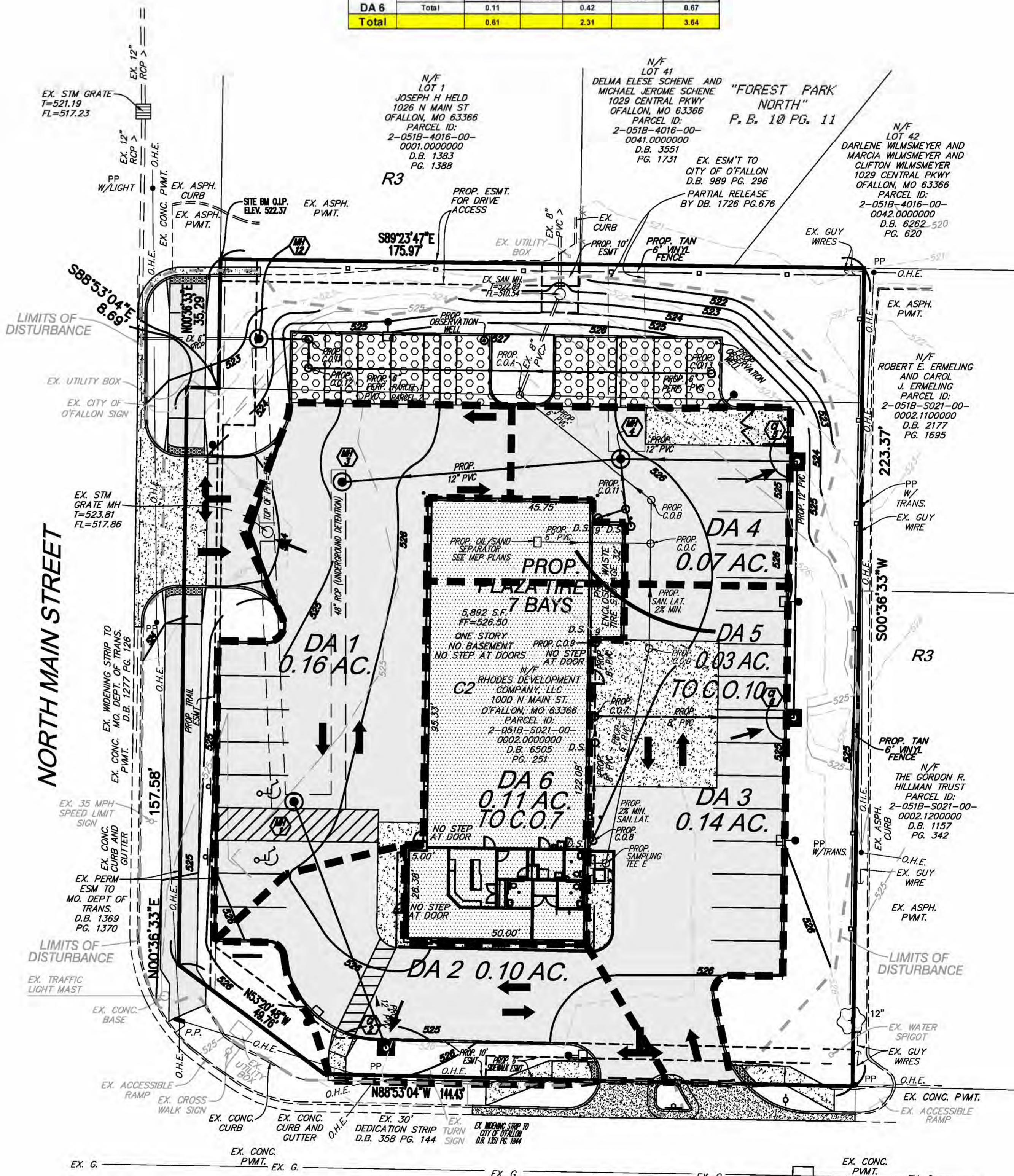
EXISTING DRAINAGE AREA TABLE						
Area I.d.	Description	Acre	15YR PI	15 YR Q	100 YR PI	100 YR Q
EX DA 1	GRASS	0.04	1.70	0.07	2.69	0.11
	ROOF	0.12	3.85	0.46	6.08	0.73
	PVMT	0.47	3.85	1.81	6.08	2.86
Total		0.63		2.34		3.70

NOTE:
1. FOR DRAINAGE AREA ONLY THIS SHEET NOT TO BE USED FOR CONSTRUCTION.

PROPOSED DRAINAGE AREA TABLE						
Area I.d.	Description	Acre	15YR PI	15 YR Q	100 YR PI	100 YR Q
DA 1	GRASS	0.00	1.70	0.00	2.69	0.00
	ROOF	0.00	3.85	0.00	6.08	0.00
	PVMT	0.16	3.85	0.62	6.08	0.97
Total		0.16		0.62		0.97
DA 2	GRASS	0.02	1.70	0.08	2.69	0.05
	ROOF	0.00	3.85	0.00	6.08	0.00
	PVMT	0.08	3.85	0.31	6.08	0.49
Total		0.10		0.34		0.54
DA 3	GRASS	0.00	1.70	0.00	2.69	0.00
	ROOF	0.00	3.85	0.00	6.08	0.00
	PVMT	0.14	3.85	0.54	6.08	0.85
Total		0.14		0.54		0.85
DA 4	GRASS	0.00	1.70	0.00	2.69	0.00
	ROOF	0.00	3.85	0.00	6.08	0.00
	PVMT	0.07	3.85	0.27	6.08	0.43
Total		0.07		0.27		0.43
DA 5	GRASS	0.00	1.70	0.00	2.69	0.00
	ROOF	0.03	3.85	0.12	6.08	0.18
	PVMT	0.00	3.85	0.00	6.08	0.00
Total		0.03		0.12		0.18
DA 6	GRASS	0.00	1.70	0.00	2.69	0.00
	ROOF	0.11	3.85	0.42	6.08	0.67
	PVMT	0.00	3.85	0.00	6.08	0.00
Total		0.11		0.42		0.67
Total		0.51		2.31		3.54



EXISTING DRAINAGE AREA MAP



PROPOSED DRAINAGE AREA MAP

LEGEND
--- DISTURBED LIMITS
ALL SEWER REACHES TO BE CONSTRUCTED FROM DOWNSTREAM END FIRST.

Revised	Comment
2/17/16	1ST SUB TO CITY
2/23/16	REV. PER CITY CHECK LIST
4/7/16	REV. PER CITY COMMENTS
5/12/16	REV. PER CITY COMMENTS
6/13/16	REV. PER CITY COMMENTS
7/7/16	REV. PER SEWER CONTRACTOR
10/2/16	3/4 ENTRANCE TO TOM GINNEVER

Engineered By:
DOERING ENGINEERING
CIVIL ENGINEERING • PLANNING • SURVEYING

Missouri Office
5020 Glinn Pkwy.
St. Louis, MO 63112
Telephone: (314) 945-7118
Fax: (314) 945-7119

Seal
STATE OF MISSOURI
Professional Engineer
Mark A. Doering
10/3/16
16-23059

MARK A. DOERING
CIVIL ENGINEER E-23059
10318
MO. EXPIRATION DATE:
DECEMBER 31 2014
IL. EXPIRATION DATE:
DECEMBER 31 2013
MO. CORPORATE
LICENSE NO. 001347
IL. CORPORATE
LICENSE NO. 184.003035

PLAZA TIRE
1000 N MAIN ST.
O'FALLON, MO 63366
EX./PROP. DAM

Date: 2/17/16	Sheet
Project Number: 15030	Check By: MAD
File Name: 15030CD	
Drawn By: JAB	
C8	