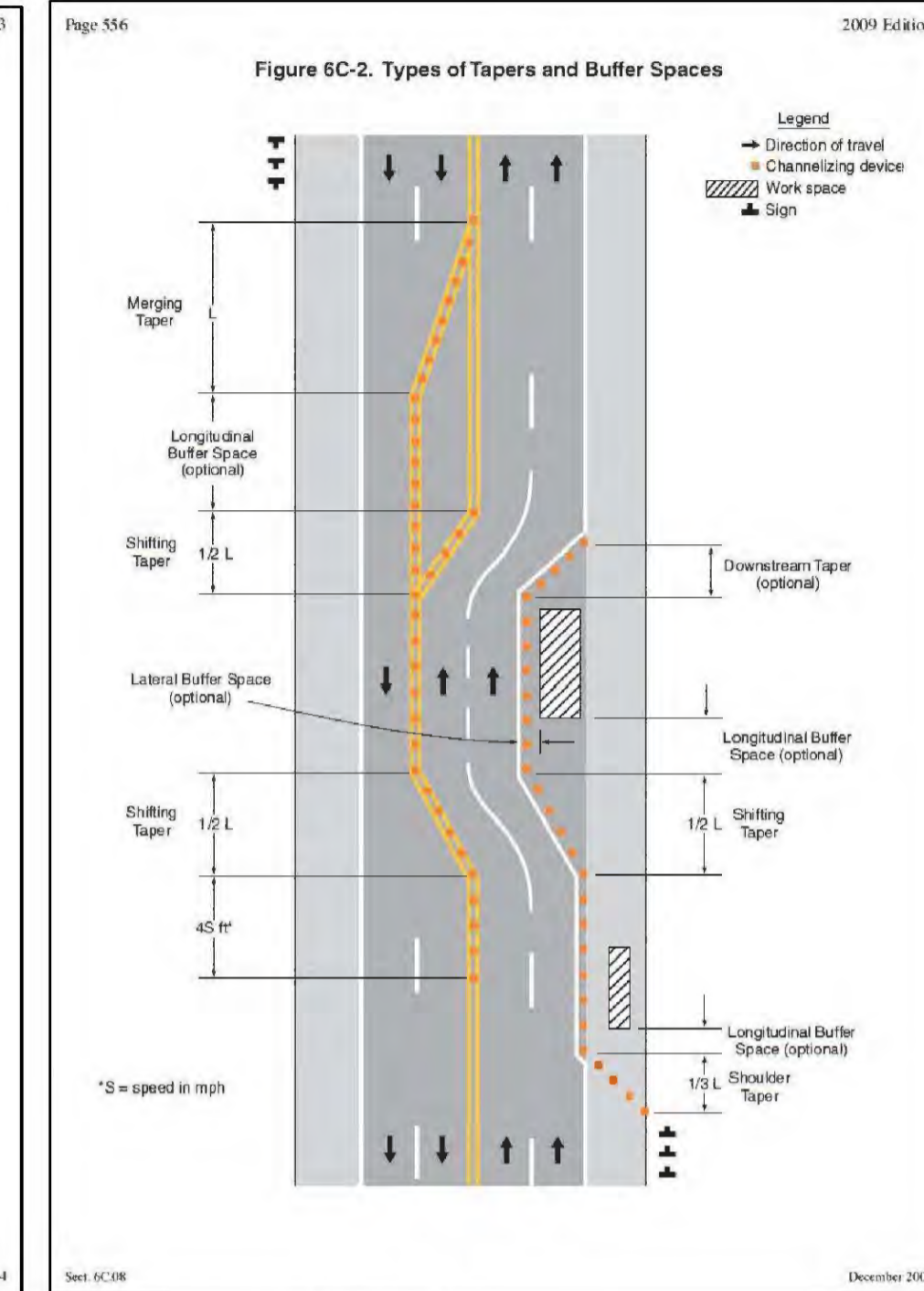
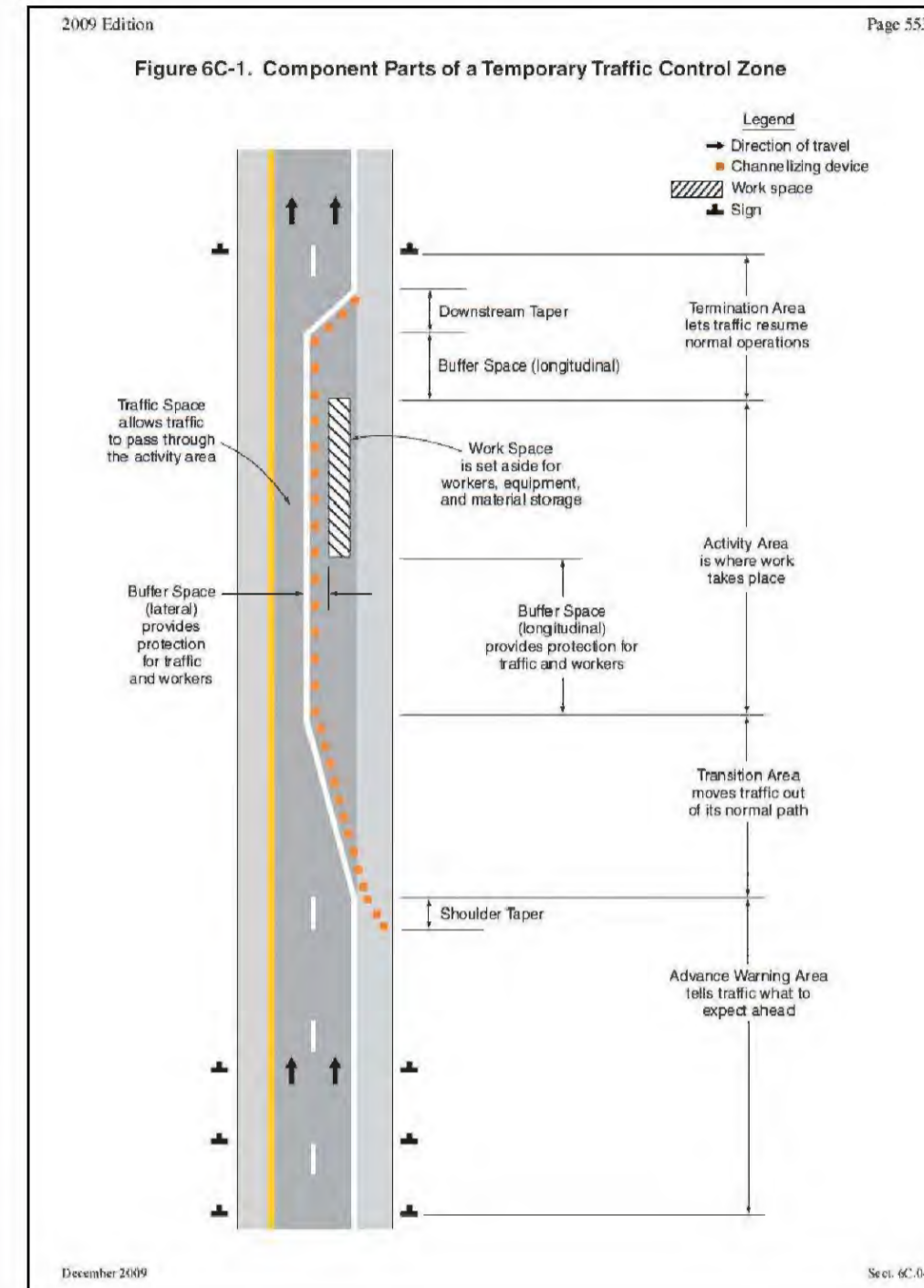
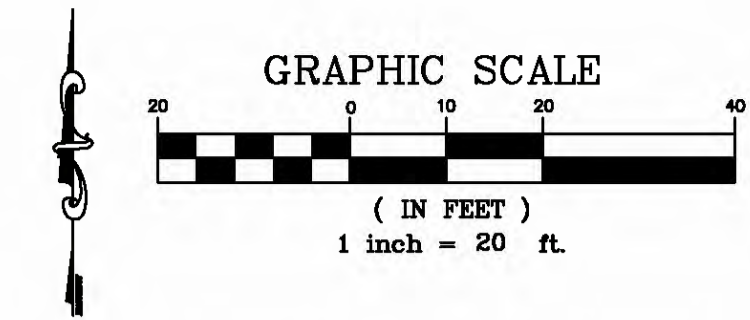


TRAFFIC CONTROL PLAN NOTES:

1. UNDERGROUND UTILITIES HAVE BEEN PLOTTED FROM AVAILABLE INFORMATION AND THEREFORE, THEIR LOCATIONS MUST BE CONSIDERED APPROXIMATE ONLY. THE VERIFICATION OF THE LOCATION OF ALL UNDERGROUND UTILITIES, EITHER SHOWN OR NOT SHOWN ON THESE PLANS, SHALL BE THE RESPONSIBILITY OF THE CONTRACTOR AND SHALL BE LOCATED PRIOR TO ANY GRADING OR CONSTRUCTION OF IMPROVEMENTS.
2. ALL DIMENSIONS ARE TO FACE OF CURB OR EDGE OF PAVEMENT, UNLESS OTHERWISE NOTED.
3. ALL CONSTRUCTION SHALL BE PER THE MOST CURRENT DETAILS LOCATED IN THE GOVERNING MUNICIPAL DETAIL BOOKS.
4. TRAFFIC CONTROL SIGNS SHALL BE COVERED WHEN CONDITION DOES NOT EXIST.
5. REFER TO THE MANUAL ON UNIFORM TRAFFIC CONTROL DEVICES FOR ADDITIONAL INFORMATION AND DETAILS.



Page 554 Table 6C-1. Recommended Advance Warning Sign Minimum Spacing

Road Type	Distance Between Signs**		
	A	B	C
Urban (low speed)*	100 feet	300 feet	100 feet
Urban (high speed)*	350 feet	350 feet	350 feet
Rural	500 feet	500 feet	500 feet
Expressway / Freeway	1,000 feet	1,500 feet	2,540 feet

* Speed category to be determined by the highway agency.
 ** The column headings A, B, and C are the dimensions shown in Figures 6C-1 through 6C-4. The A dimension is the distance from the location or point of application to the first sign. The B dimension is the distance between the first and second signs. The C dimension is the distance between the second and third signs. (The "first sign" is the sign in a three-sign series that is closest to the TTC zone. The "third sign" is the sign that is furthest upstream from the TTC zone.)

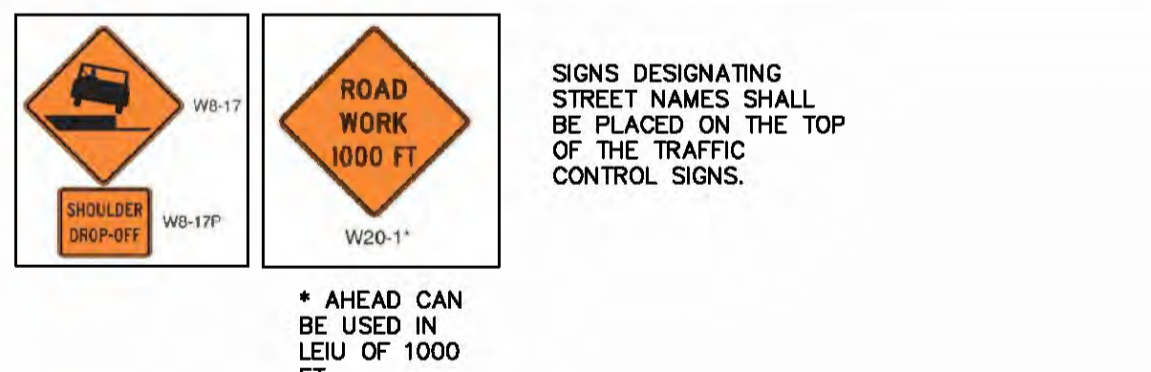
Page 556 Table 6C-2. Stopping Sight Distance as a Function of Speed

Speed*	Distance
20 mph	115 feet
25 mph	155 feet
30 mph	200 feet
35 mph	250 feet
40 mph	300 feet
45 mph	350 feet
50 mph	400 feet
55 mph	450 feet
60 mph	500 feet
65 mph	550 feet
70 mph	600 feet
75 mph	650 feet

Page 556 Table 6C-3. Taper Length Criteria for Temporary Traffic Control Zones

Type of Taper	Taper Length
Merging Taper	1.5L
Shifting Taper	1.5L
Shoulder Taper	1.5L

* L = taper length in feet.
 ** L = speed in mph.



Revised	Comment
2/17/16	1ST SUB TO CITY
2/23/16	REV. PER CITY CHECK LIST
4/7/16	REV. PER CITY COMMENTS
5/12/16	REV. PER CITY COMMENTS
6/13/16	REV. PER CITY COMMENTS
7/17/16	REV. PER SEWER CONTRACTOR
10/2/16	3/4 ENTRANCE TO TOM GINNEVER

Engineered By:

DOERING ENGINEERING, INC.

MISSOURI CHARTERED PROFESSIONAL ENGINEER

6020 Gilmor Pk.
 St. Louis, MO 63121
 Phone: (314) 845-7118
 Fax: (314) 845-7118

CIVIL ENGINEERING • PLANNING • SURVEYING

Seal

STATE OF MISSOURI

MARK A. DOERING
 10/31/16
 PROFESSIONAL ENGINEER

MARK A. DOERING
 CIVIL ENGINEER E-23059

10/31/16
 MO. EXPIRATION DATE:
 DECEMBER 31 2014
 IL. EXPIRATION DATE:
 DECEMBER 31 2013
 MO. CORPORATE
 LICENSE NO. 001347
 IL. CORPORATE
 LICENSE NO. 184.003035

PLAZA TIRE
 1000 N MAIN ST.
 O'FALLON, MO 63366
 TRAFFIC HANDLING PLANS

Date: 2/17/16	Sheet
Project Number: 15030D	Check By: MAD
File Name: 15030CD	
Drawn By: JAB	
Check By: MAD	
C12	