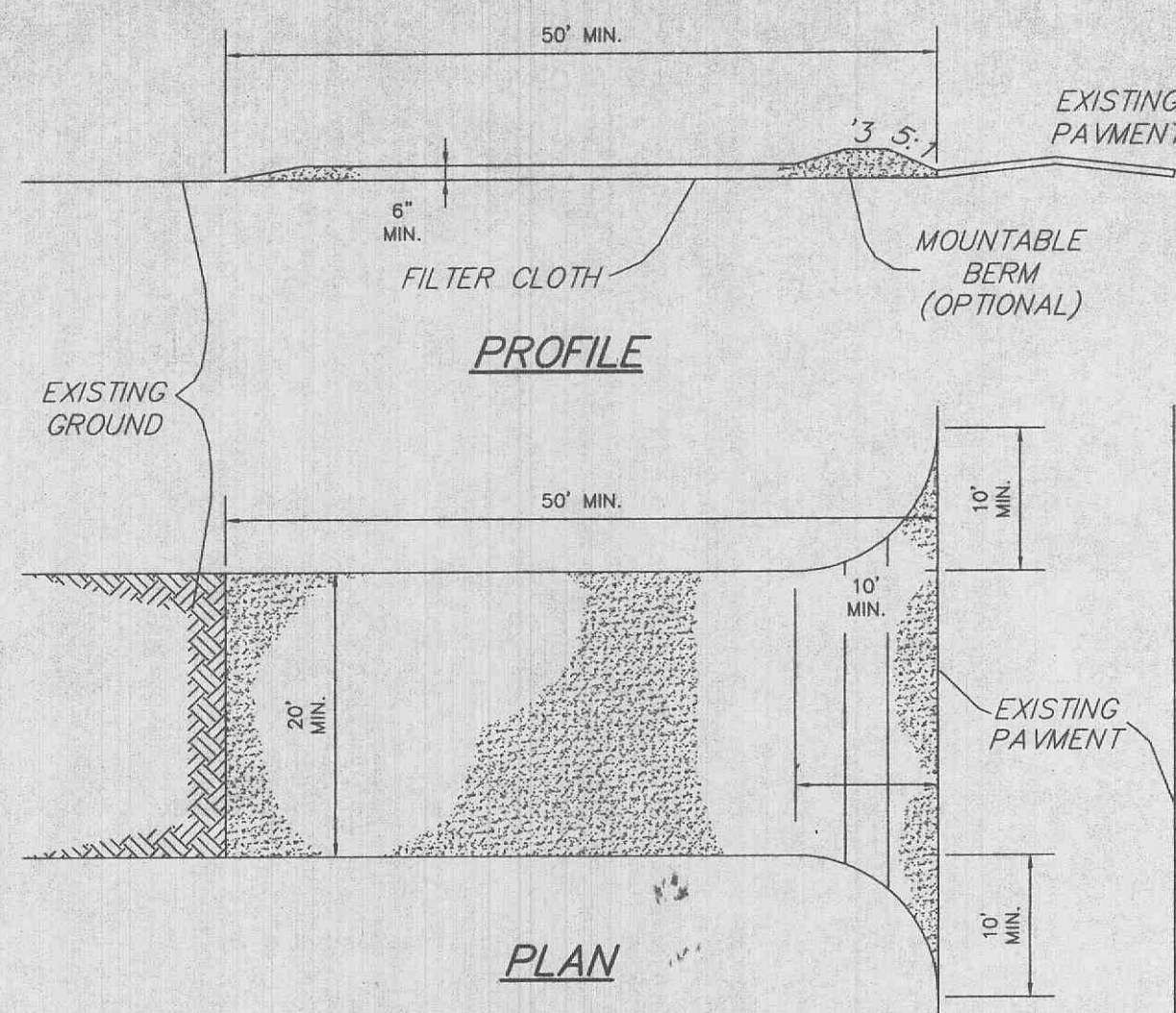


REVISIONS:

- 7-10-2001 CLIENT REVISIONS
- 7-12-2001 CITY COMMENTS
- 8-02-2001 CITY COMMENTS
- 8-28-2001 MDOOT REVS.
- 9-13-2001 COMMENTS
- 10-1-2001 D.C.S.D. COMMENTS
- 10-3-2001 CITY COMMENTS

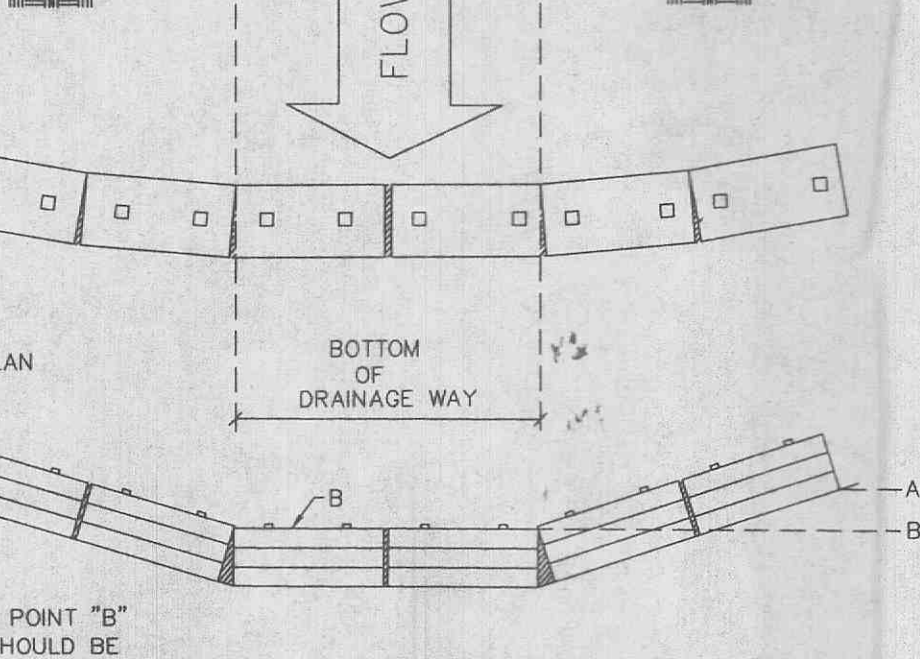
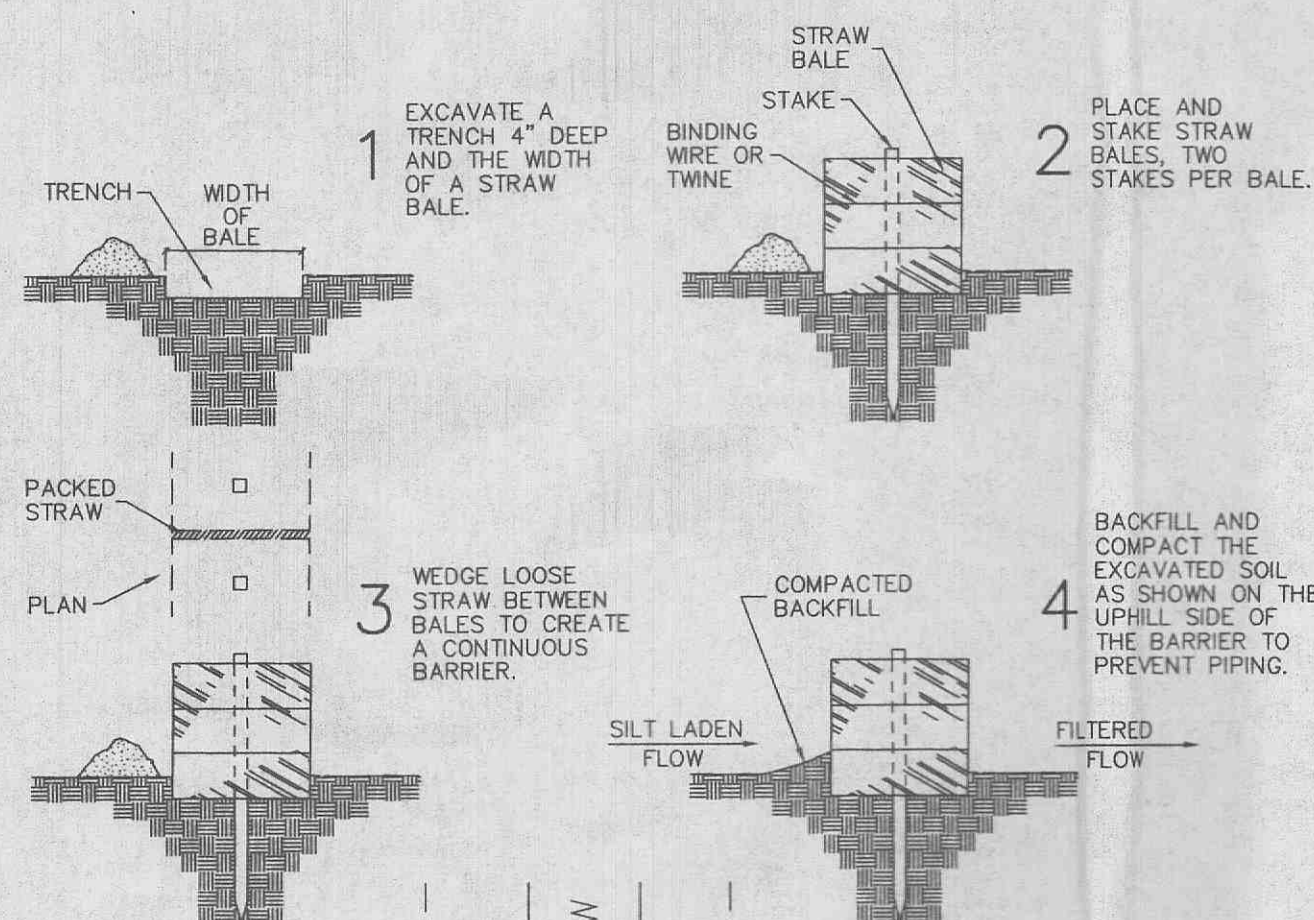


CONSTRUCTION SPECIFICATIONS

1. Stone Size - Use 2" stone, or reclaimed or recycled concrete equivalent.
2. Length - As required, but not less than 50 feet (except on a single residence lot where a 30 foot minimum length would apply).
3. Thickness - Not less than six (6) inches.
4. Width - Twenty (20) foot minimum, but not less than the full width at points where ingress or egress occurs.
5. Filter Cloth - Will be placed over the entire area prior to placing of stone. Filter will not be required on a single family residence lot.
6. Surface Water - All surface water flowing or diverted toward construction entrances shall be piped across the entrance. If piping is impractical, a mountable berm with 5:1 slopes will be permitted.
7. Maintenance - The entrance shall be maintained in a condition which will prevent tracking or flowing of sediment onto public rights-of-way. This may require periodic top dressing with additional stone as conditions demand and repair and/or cleanout of any measures used to trap sediment. All sediment spilled, dropped, washed or tracked onto public rights-of-way must be removed immediately.
8. Washing - Wheels shall be cleaned to remove sediment prior to entrance onto public rights-of-way. When washing is required, it shall be done on an area stabilized with stone and which drains into an approved sediment trapping device.
9. Periodic inspection and needed maintenance shall be provided after each rain.

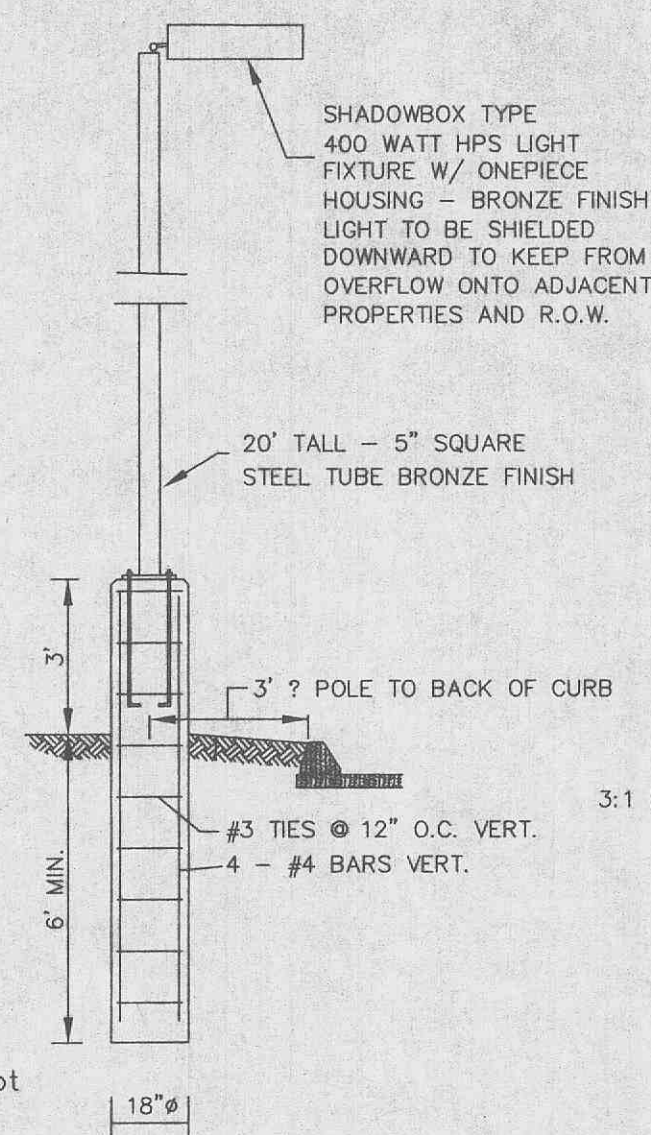
STABILIZED CONSTRUCTION ENTRANCE/WASHDOWN AREA

NOT TO SCALE



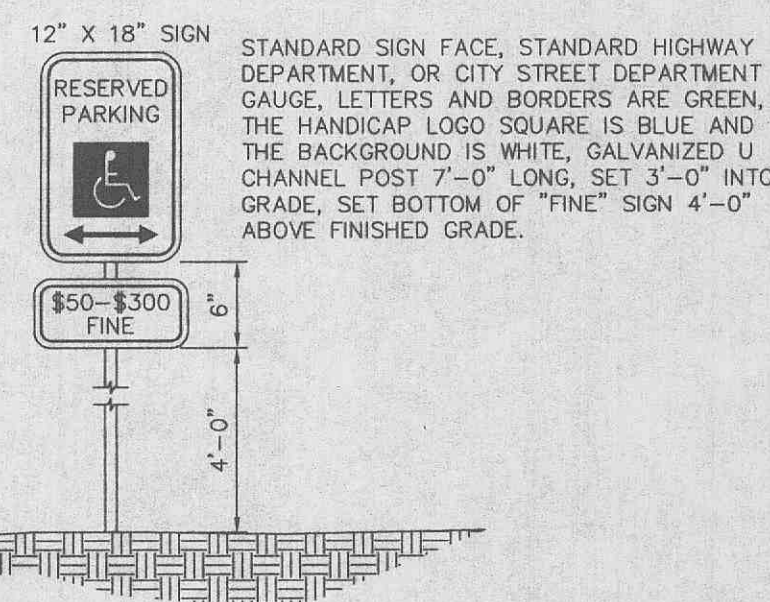
PLACEMENT AND CONSTRUCTION OF A STRAW BALE BARRIER

**STRAW BALE BARRIERS
FOR URBAN DEVELOPMENT SITES
APPENDIX C**



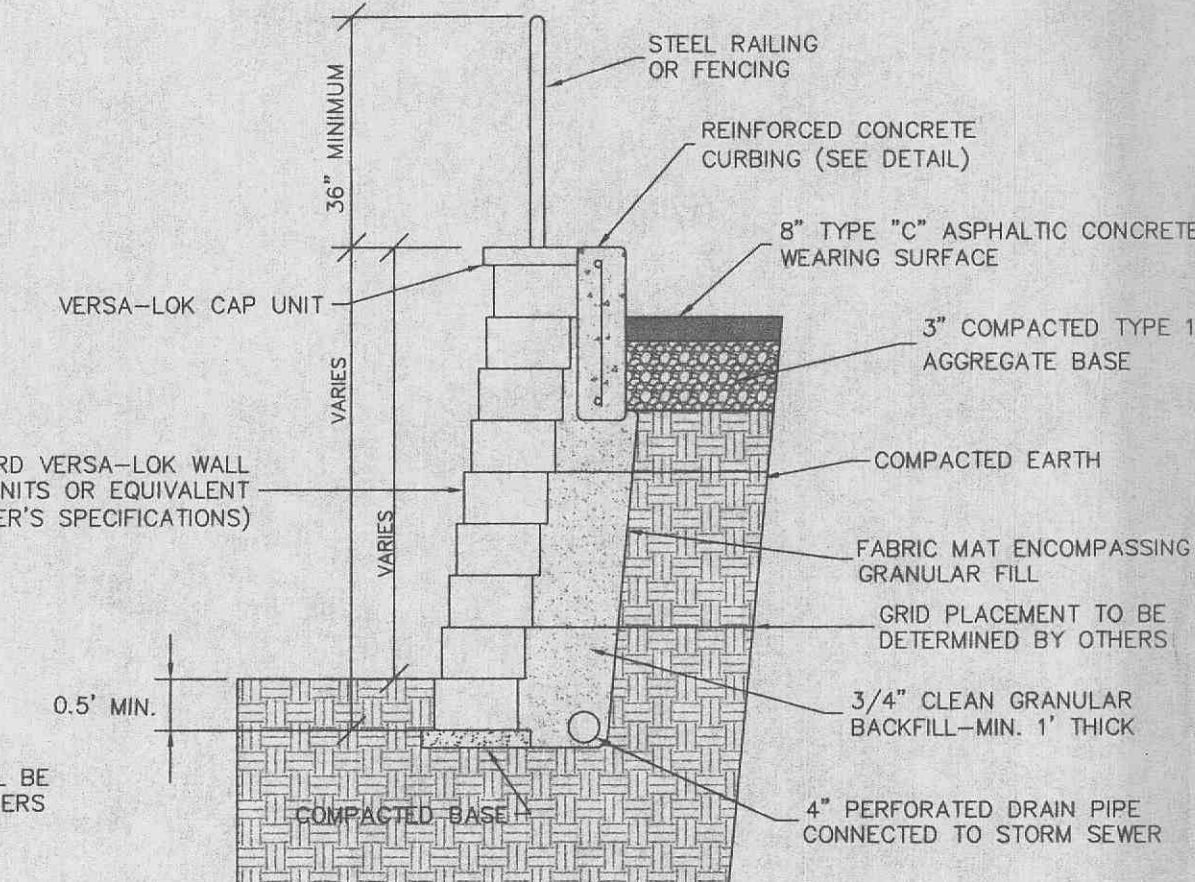
LIGHT POLE & BASE

NOT TO SCALE



HANDICAP PARKING SIGN

NOT TO SCALE

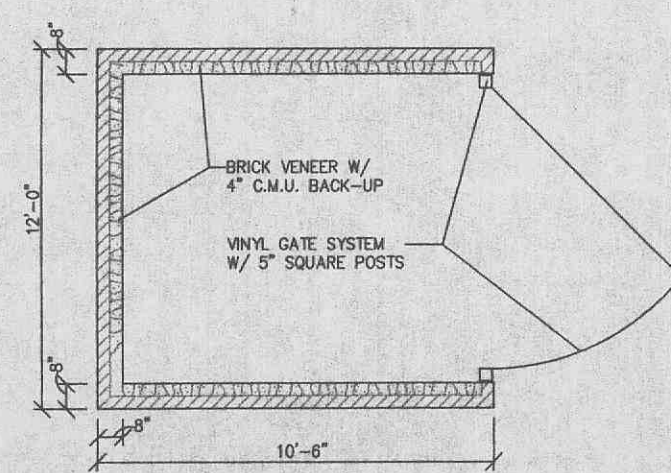


NOTE:
FINAL DESIGN SHALL BE PERFORMED BY OTHERS

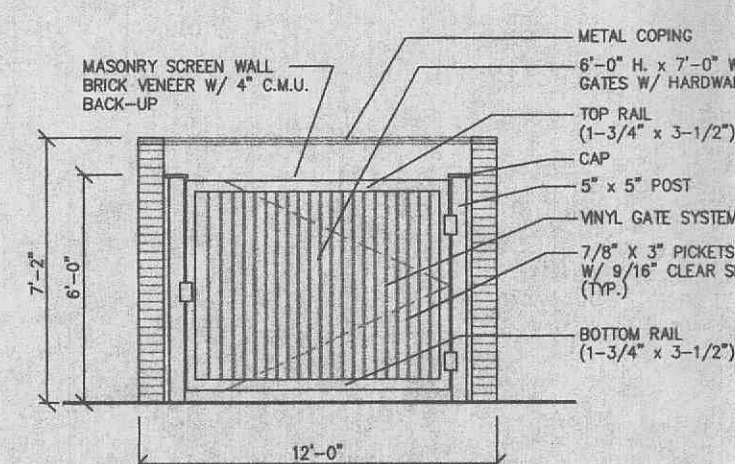
SEE MANUFACTURER'S SPECIFICATIONS FOR INSTALLATION PROCEDURE, AND GRID PLACEMENT

MODULAR BLOCK CONCRETE RETAINING WALL

NOT TO SCALE



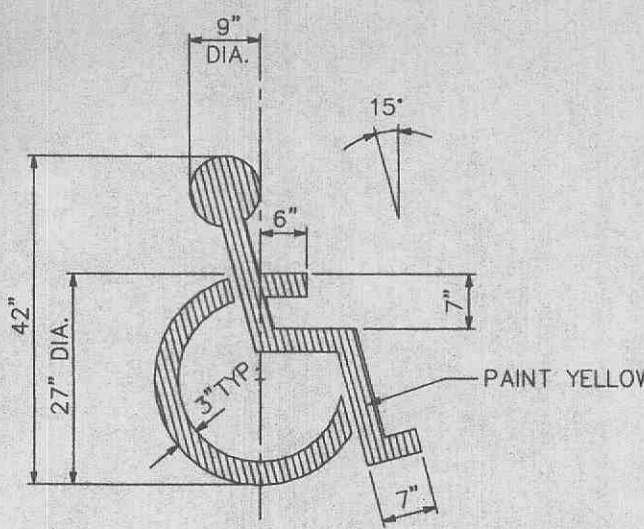
PLAN AT TRASH ENCLOSURE GATE



ELEVATION AT TRASH ENCLOSURE GATE

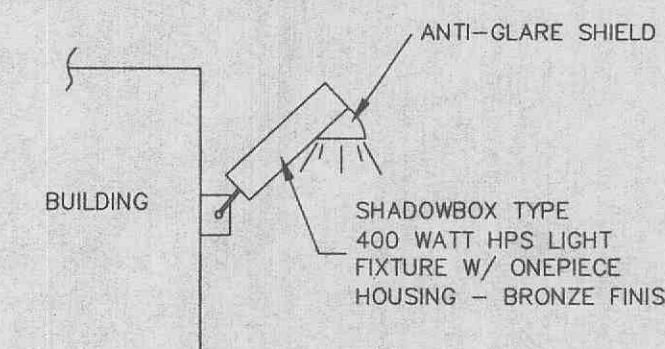
MASONRY TRASH ENCLOSURE

NOT TO SCALE



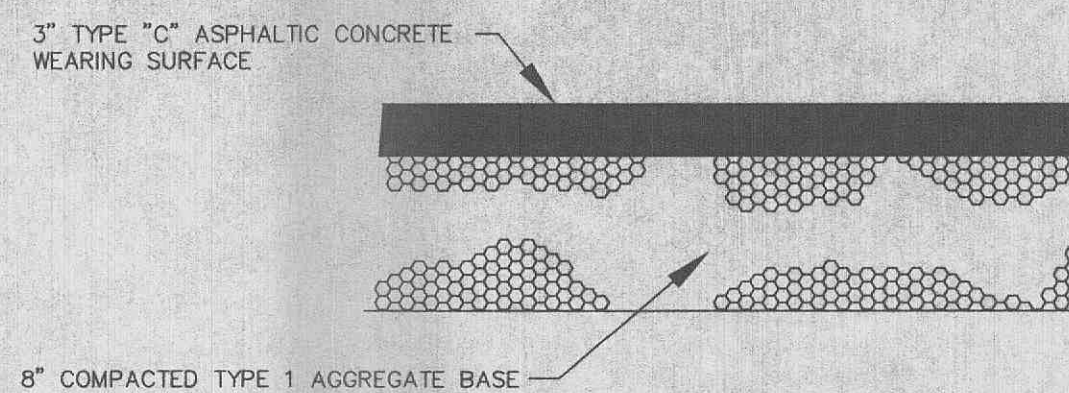
PAINTED HANDICAP PARKING SYMBOL

NOT TO SCALE



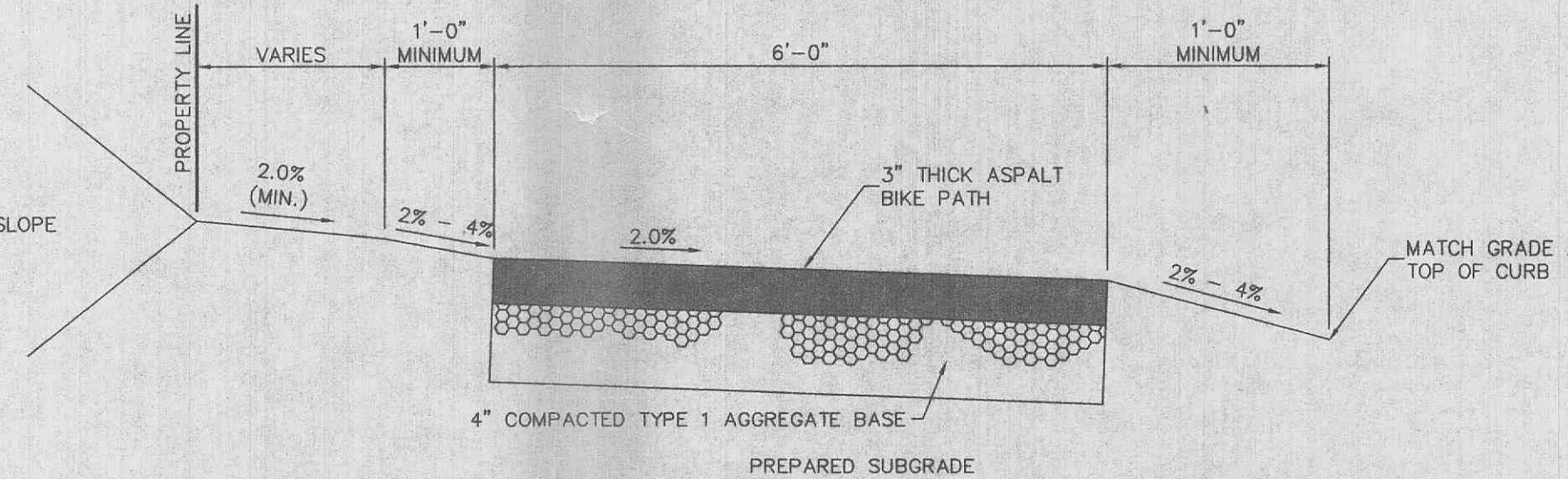
BUILDING MOUNTED LIGHT

NOT TO SCALE



ASPHALT PAVEMENT DETAIL

NOT TO SCALE



MULTI-USE TRAIL DETAIL

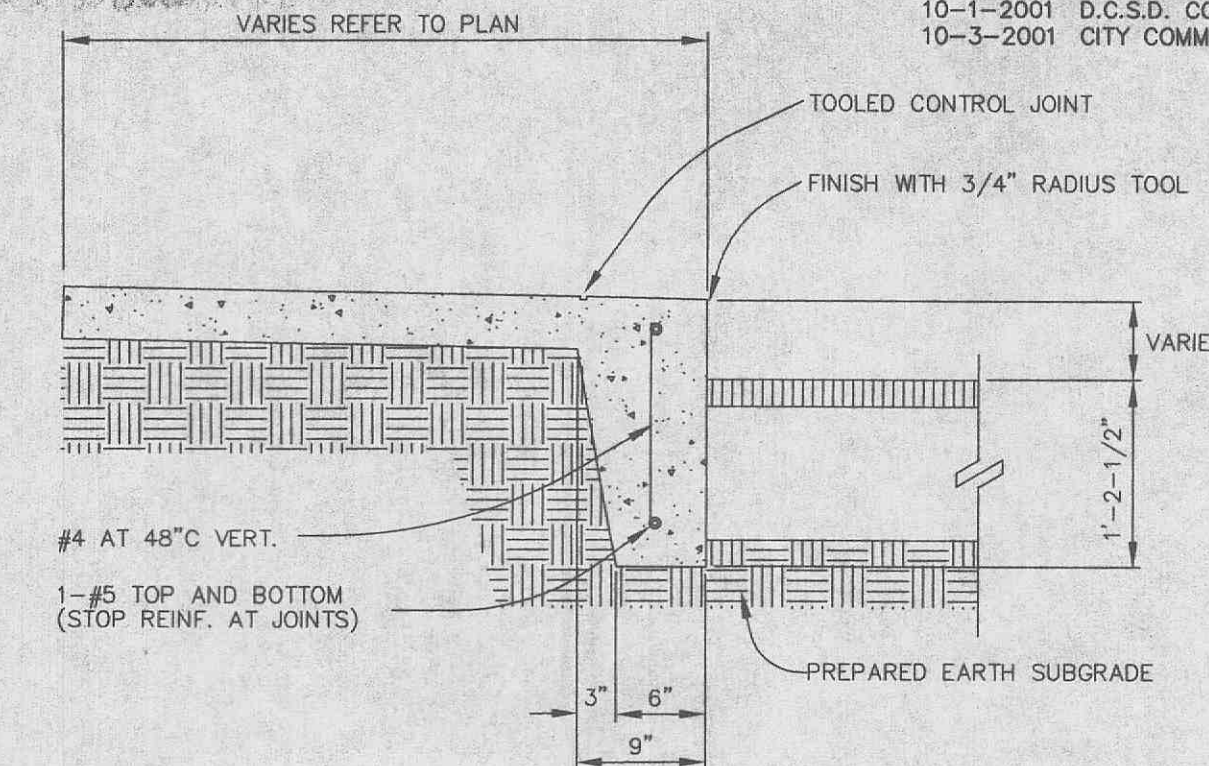
NOT TO SCALE

NOTES:

PROVIDE STRIPING AND A COLORED TEXTURED ASPHALT WHERE THE TRAIL INTERSECTS WITH ACCESS DRIVES INTO THE DEVELOPMENT.

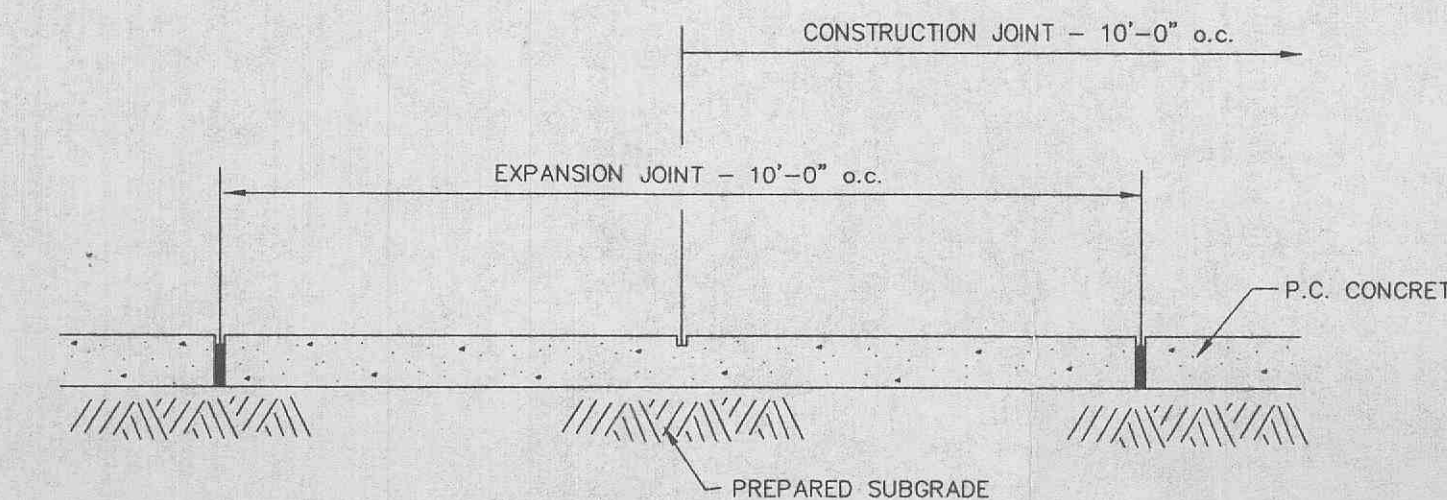
MAXIMUM SLOPE OF THE PATH SHALL NOT EXCEED 8% AND 2% CROSS SLOPE PER CITY OF O'FALLON SPECIFICATIONS.

THE TRAIL SHALL BE CONSTRUCTED WITH A CONSISTENT SLOPE WITH VERTICAL CURVES A MINIMUM OF 50' IN LENGTH. AFTER FINAL COMPRESSION, THE SURFACE SHALL BE SMOOTH AND TRUE TO THE ESTABLISHED CROWN AND GRADE. ANY LOW OR DEFECTIVE PLACES SHALL IMMEDIATELY BE REMEDIED BY CUTTING OUT THE COURSE AT SUCH SPOTS AND REPLACING IT WITH FRESH HOT MIXTURE, WHICH SHALL BE IMMEDIATELY COMPACTED TO CONFORM WITH THE SURROUNDING AREA AND SHALL BE THOROUGHLY BONDED TO IT. THE FINISHED PAVEMENT SHALL BE SET FREE FROM DEPRESSIONS EXCEEDING ONE-EIGHTH INCH AS MEASURED WITH A TEN-FOOT STRAIGHT EDGE PARALLEL TO THE CENTERLINE OF THE TRAIL.



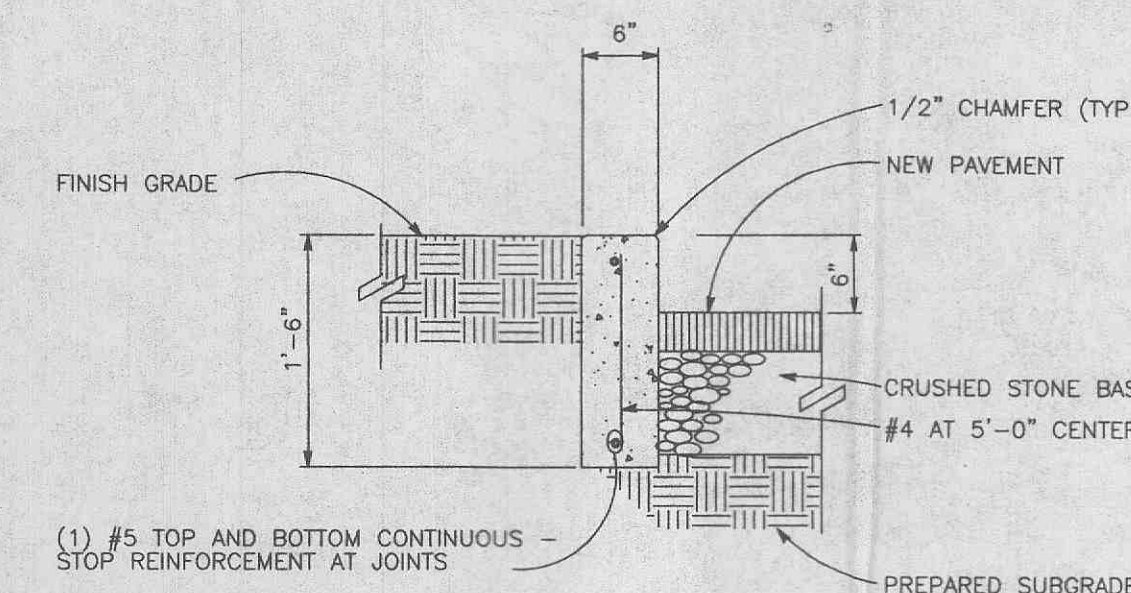
TURNED DOWN CONCRETE WALK

NOT TO SCALE



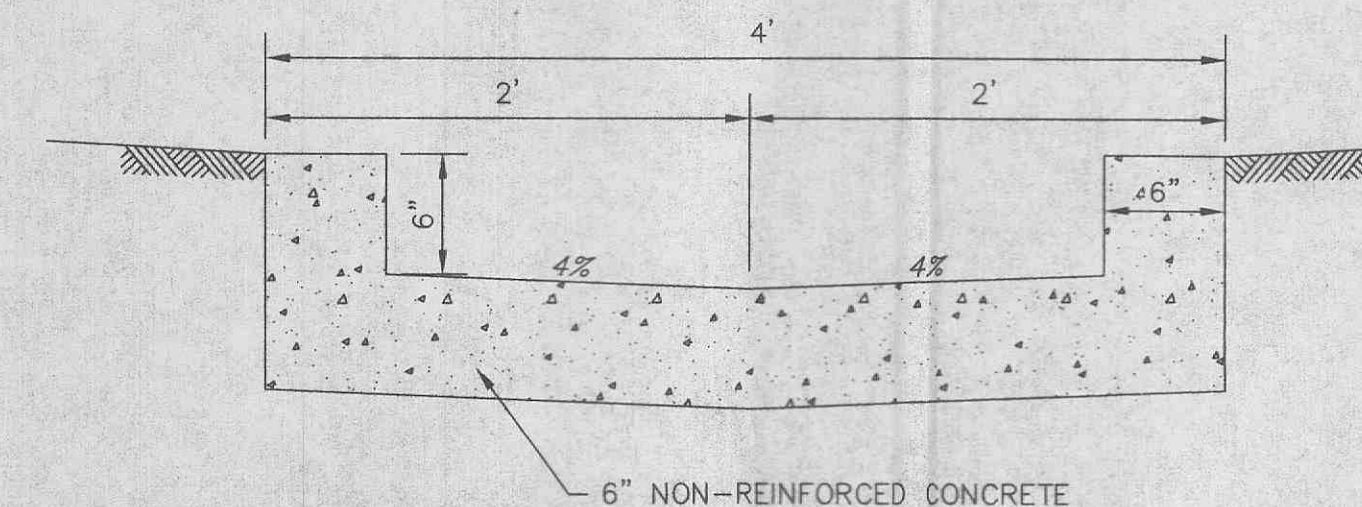
CONCRETE SIDEWALK DETAIL

NOT TO SCALE



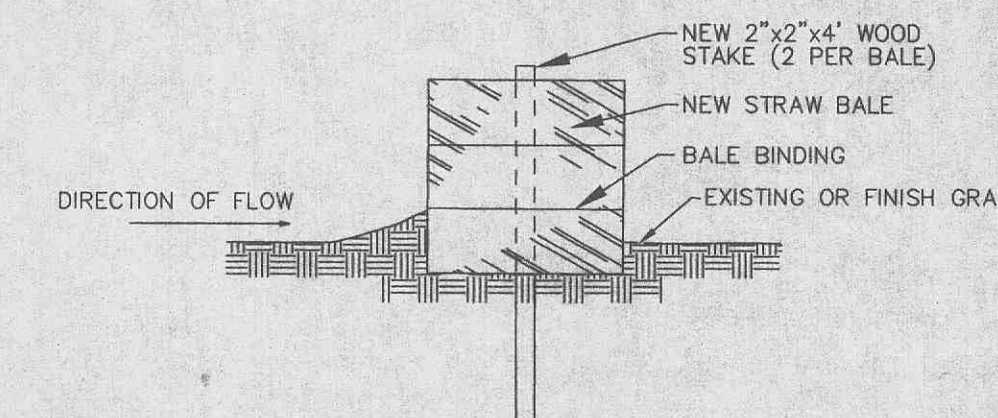
CONCRETE CURB DETAIL

NOT TO SCALE



CONCRETE SWALE

NOT TO SCALE

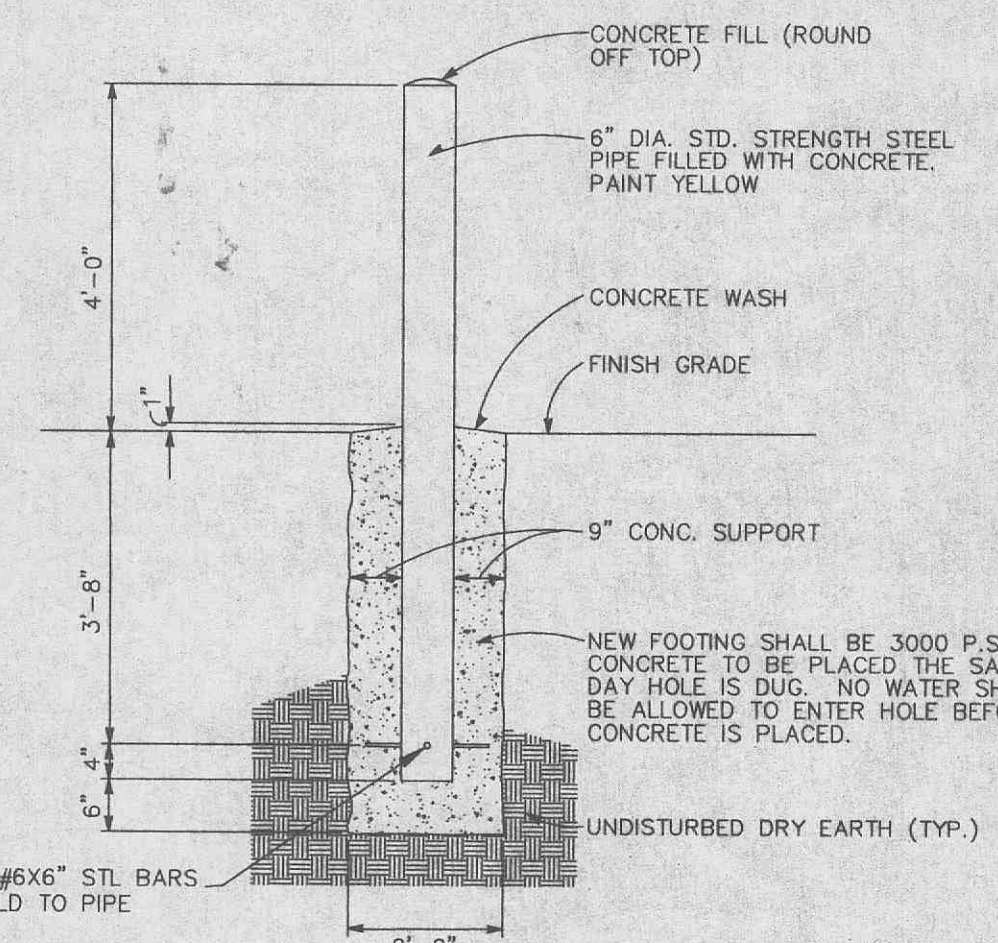


SEDIMENT BARRIER

NOT TO SCALE

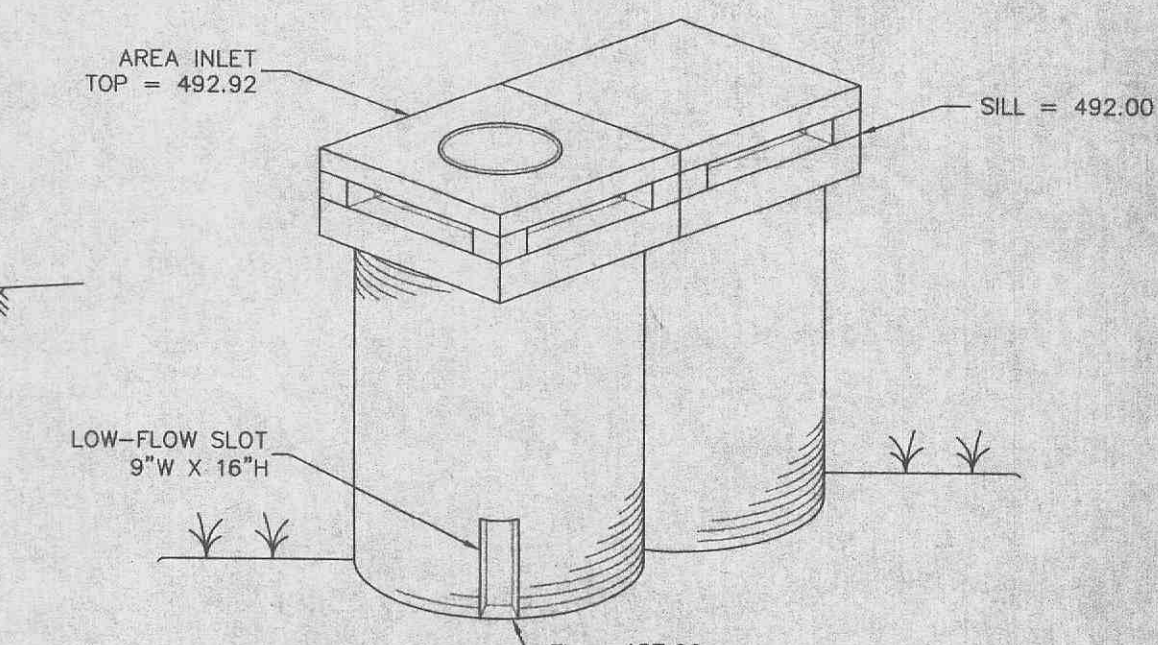
NOTES:

1. STRAW BALES, NOT HAY BALES SHALL BE USED.
2. BUTT ENDS OF BALES TIGHTLY TOGETHER.
3. INSTALL BALES WITH BINDING AROUND SIDES, NOT TOP AND BOTTOM.
4. FILL ANY GAP BETWEEN BALES BY WEDGING LOOSE STRAW BETWEEN THEM.



PIPE BOLLARD DETAIL

NOT TO SCALE



OVERFLOW STRUCTURE DETAIL

NOT TO SCALE