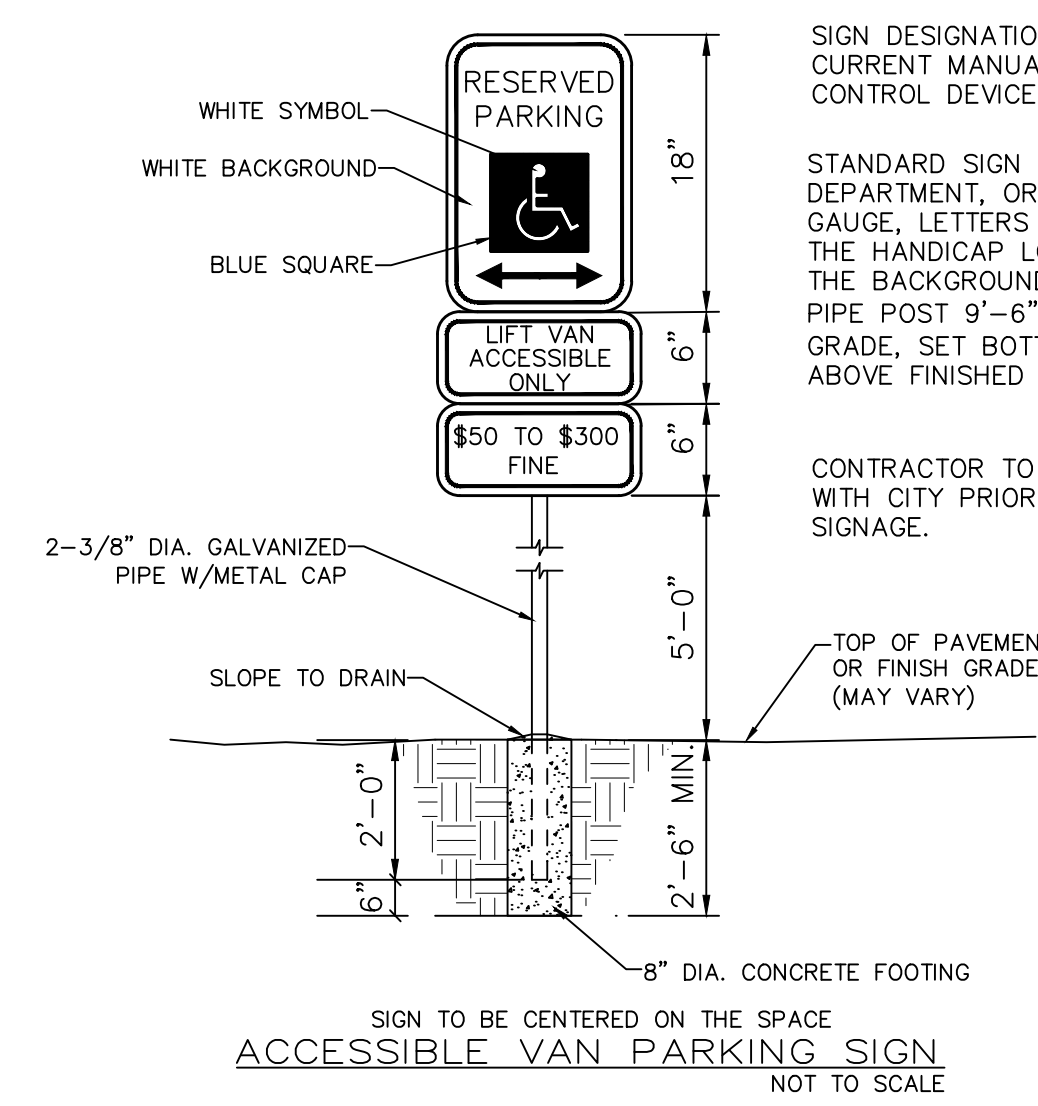


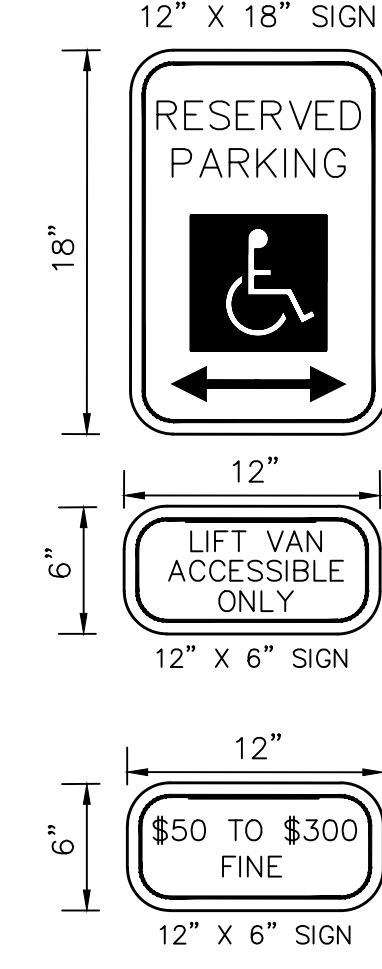
PER RN #19
All traffic signals, street signs, sign post, backs and bracket arms shall be painted black using Carboline Rust Bond Penetrating Sealer SG and Carboline 133 HB paint (or equivalent as approved by City of O'Fallon and MoDOT).



SIGN DESIGNATIONS ARE FROM THE CURRENT MANUAL ON UNIFORM TRAFFIC CONTROL DEVICES.

STANDARD SIGN FACE, STANDARD HIGHWAY DEPARTMENT, OR CITY STREET DEPARTMENT GAUGE, LETTERS AND BORDERS ARE GREEN, THE HANDICAP LOGO SQUARE IS BLUE AND THE BACKGROUND IS WHITE, GALVANIZED PIPE POST 9'-6" LONG, SET 2'-0" INTO GRADE, SET BOTTOM OF "FINE" SIGN 5'-0" ABOVE FINISHED GRADE.

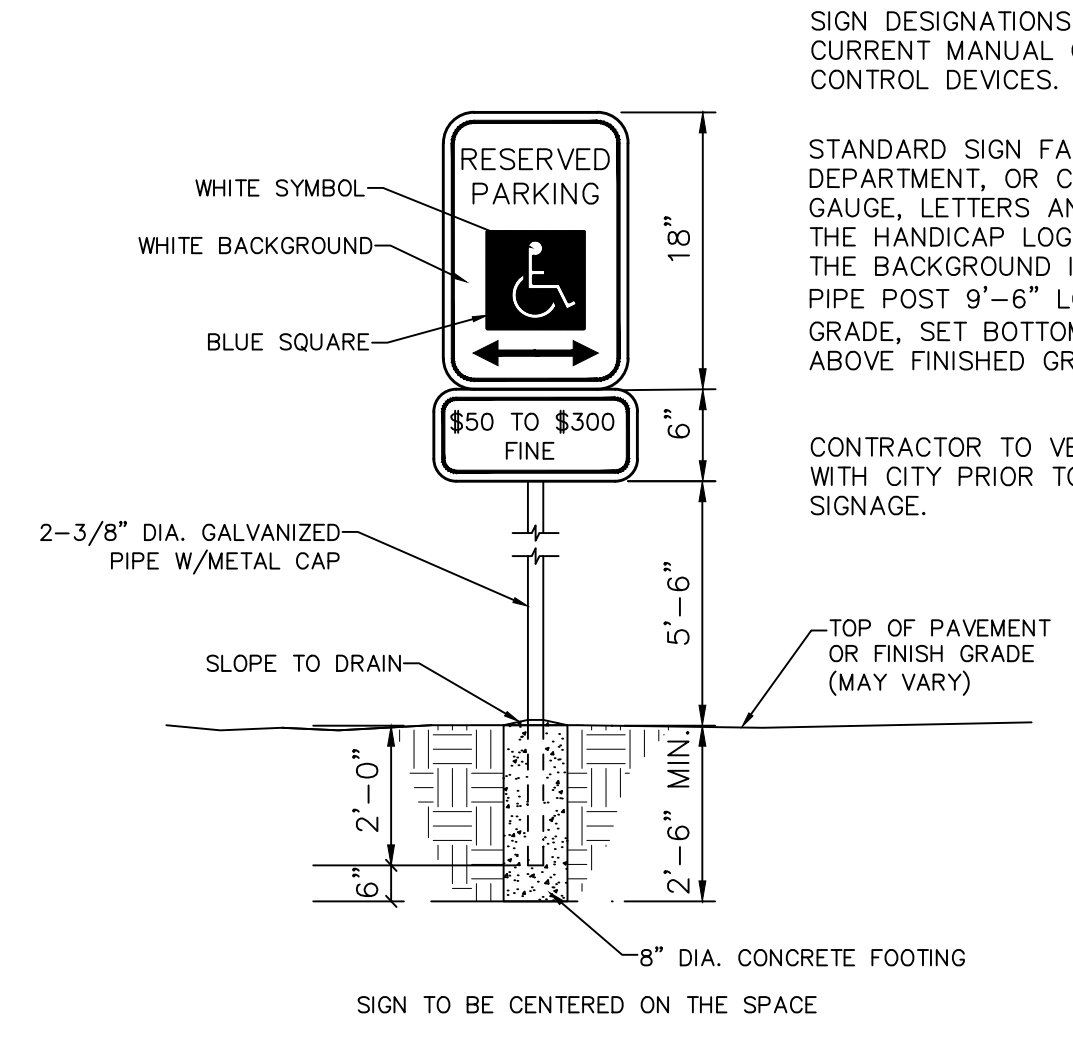
CONTRACTOR TO VERIFY ALL SIGNAGE WITH CITY PRIOR TO ORDERING ALL SIGNAGE.



SIGN DESIGNATIONS ARE FROM THE CURRENT MANUAL ON UNIFORM TRAFFIC CONTROL DEVICES.

STANDARD SIGN FACE, STANDARD HIGHWAY DEPARTMENT, OR CITY STREET DEPARTMENT GAUGE, LETTERS AND BORDERS ARE GREEN, THE HANDICAP LOGO SQUARE IS BLUE AND THE BACKGROUND IS WHITE.

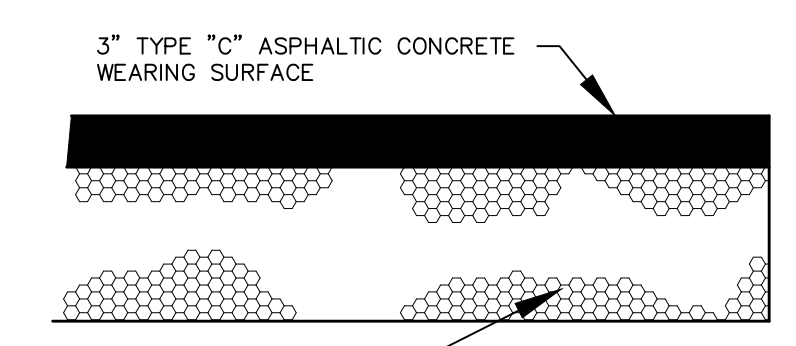
CONTRACTOR TO VERIFY ALL SIGNAGE WITH CITY PRIOR TO ORDERING ALL SIGNAGE.



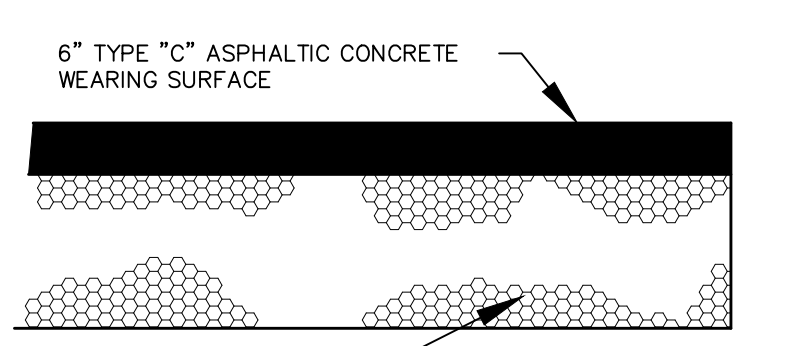
SIGN DESIGNATIONS ARE FROM THE CURRENT MANUAL ON UNIFORM TRAFFIC CONTROL DEVICES.

STANDARD SIGN FACE, STANDARD HIGHWAY DEPARTMENT, OR CITY STREET DEPARTMENT GAUGE, LETTERS AND BORDERS ARE GREEN, THE HANDICAP LOGO SQUARE IS BLUE AND THE BACKGROUND IS WHITE, GALVANIZED PIPE POST 9'-6" LONG, SET 2'-0" INTO GRADE, SET BOTTOM OF "FINE" SIGN 5'-6" ABOVE FINISHED GRADE.

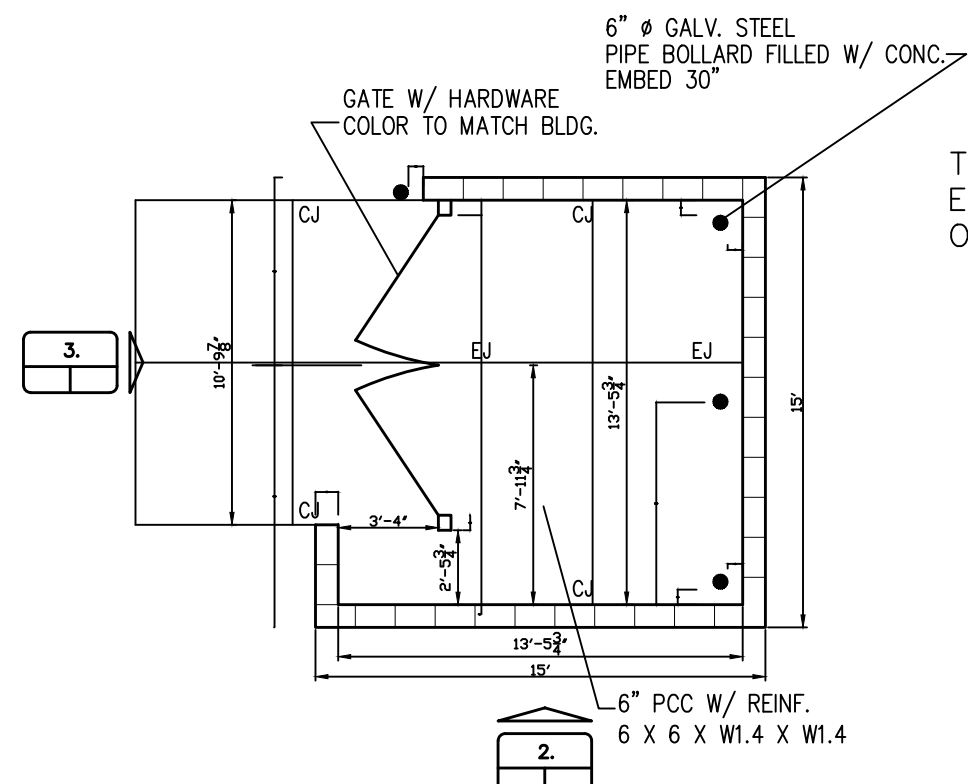
CONTRACTOR TO VERIFY ALL SIGNAGE WITH CITY PRIOR TO ORDERING ALL SIGNAGE.



LIGHT DUTY ASPHALT PAVEMENT DETAIL
NOT TO SCALE
THE ASPHALT SURFACE SHALL BE COMPACTED TO 98% MAXIMUM DENSITY.



HEAVY DUTY ASPHALT PAVEMENT DETAIL
NOT TO SCALE
THE ASPHALT SURFACE SHALL BE COMPACTED TO 98% MAXIMUM DENSITY.



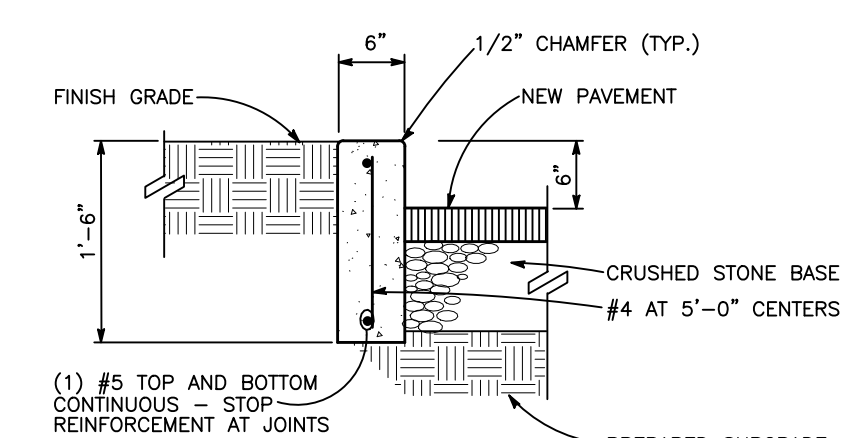
THIS DETAIL HAS BEEN PROVIDED FOR CONCEPTUAL APPROVAL ONLY. EXACT DETAIL OF MATERIAL AND CONSTRUCTION METHODS SHALL BE OUTLINES IN THE ARCHITECTURAL BUILDING PLANS.

1. TRASH ENCLOSURE PLAN NOT TO SCALE

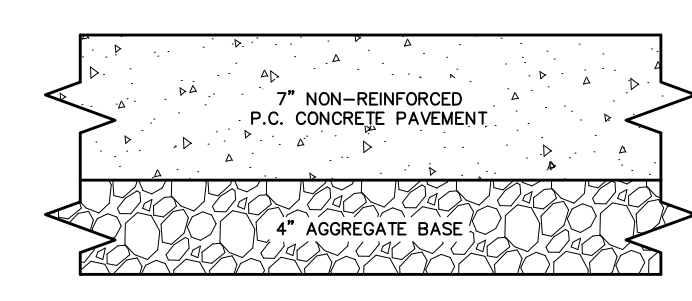
2. ELEVATION NOT TO SCALE

3. ELEVATION NOT TO SCALE

** CONTRACTOR SHALL REFER TO ARCHITECTURAL PLANS FOR CONSTRUCTION OF TRASH ENCLOSURE

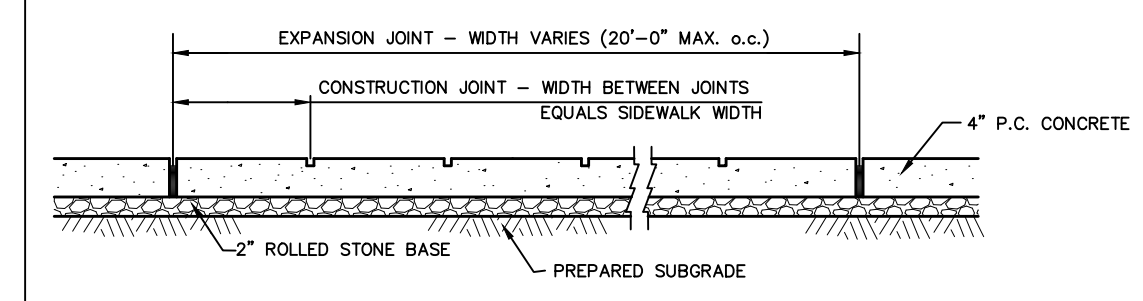


CONCRETE CURB DETAIL
NOT TO SCALE



CONCRETE PAVEMENT DETAIL
NOT TO SCALE

* ALL GRANULAR ROLLED STONE BASE UNDER PROPOSED CONCRETE MUST BE COMPACTED TO 100% OF THE MAXIMUM DENSITY AS DETERMINED BY THE STANDARD PROCTOR TEST AASHTO T-99. CONCRETE COMPRESSIVE STRENGTH SHALL BE 4000 PSI IN 28 DAYS.



CONCRETE SIDEWALK DETAIL
NOT TO SCALE

* ALL GRANULAR ROLLED STONE BASE UNDER PROPOSED CONCRETE MUST BE COMPACTED TO 100% OF THE MAXIMUM DENSITY AS DETERMINED BY THE STANDARD PROCTOR TEST AASHTO T-99. CONCRETE COMPRESSIVE STRENGTH SHALL BE 4000 PSI IN 28 DAYS.

SPEED (mph)	SIGN SPACING (ft.)		TAPER LENGTH (ft.)		OPTIONAL BUFFER LENGTH (ft.) (B)	CHANNELIZER SPACING (ft.)
	Undivided (S)	Divided (S)	Shoulder (T1)	Lane (T2)		
0-35	200	70	245	280	35	40
40-45	500	150	540	400	40	80
50-55	1000	185	660	560	50	80
60-70	SA - 1000 SB - 1500 SC - 2640	235	840	840	60	120

1 Shoulder taper length based on 10 ft. (standard shoulder width) offset. 2 Lane taper length based on 12 ft. (standard lane width) offset.

URBAN	SIGN HEIGHT	MAXIMUM WORK ZONE LENGTH (L)	Channelizer		Protective Vehicle	
			Truck or Trailer Mounted Arrow Panel	Work Space	Truck Mounted Attenuator (TMA)	Work Space
	1' Portable 7' Post	1 Mi.	Truck or Trailer Mounted Arrow Panel	Work Space	Truck Mounted Attenuator (TMA)	Work Space
RURAL UNDIVIDED	1' Portable 7' Post	2 Mi.	(Advanced Warning Rail System) For Long Term Operations			

A protective vehicle shall be used while work is in progress. The protective vehicle shall be equipped with a TMA and flashing arrow panel and positioned at least 150 ft. in advance of the work space. The protective vehicle may be eliminated if the roadway is posted at 45 mph or below, the work vehicle is positioned in advance of the work space, and the work vehicle is equipped with a flashing arrow panel and uses activated rotating lights or strobe lights.

All vehicles, equipment, workers and their activities should be restricted to one side of the pavement.

The open lane shall be provided with a 10 ft. minimum driving surface at all times. This may include a portion of the shoulder, provided the shoulder is of adequate strength to handle traffic.

For short duration operations, signs and channelizers may be reduced or eliminated.

For mobile operations where workers are on foot and move with the operation, channelizers may be reduced or eliminated.

For operations in which channelizers are not used, the arrow mode shall be displayed on any flashing arrow panel located downstream of the taper.

Supplemental warning methods may be used to call attention to the work zone.

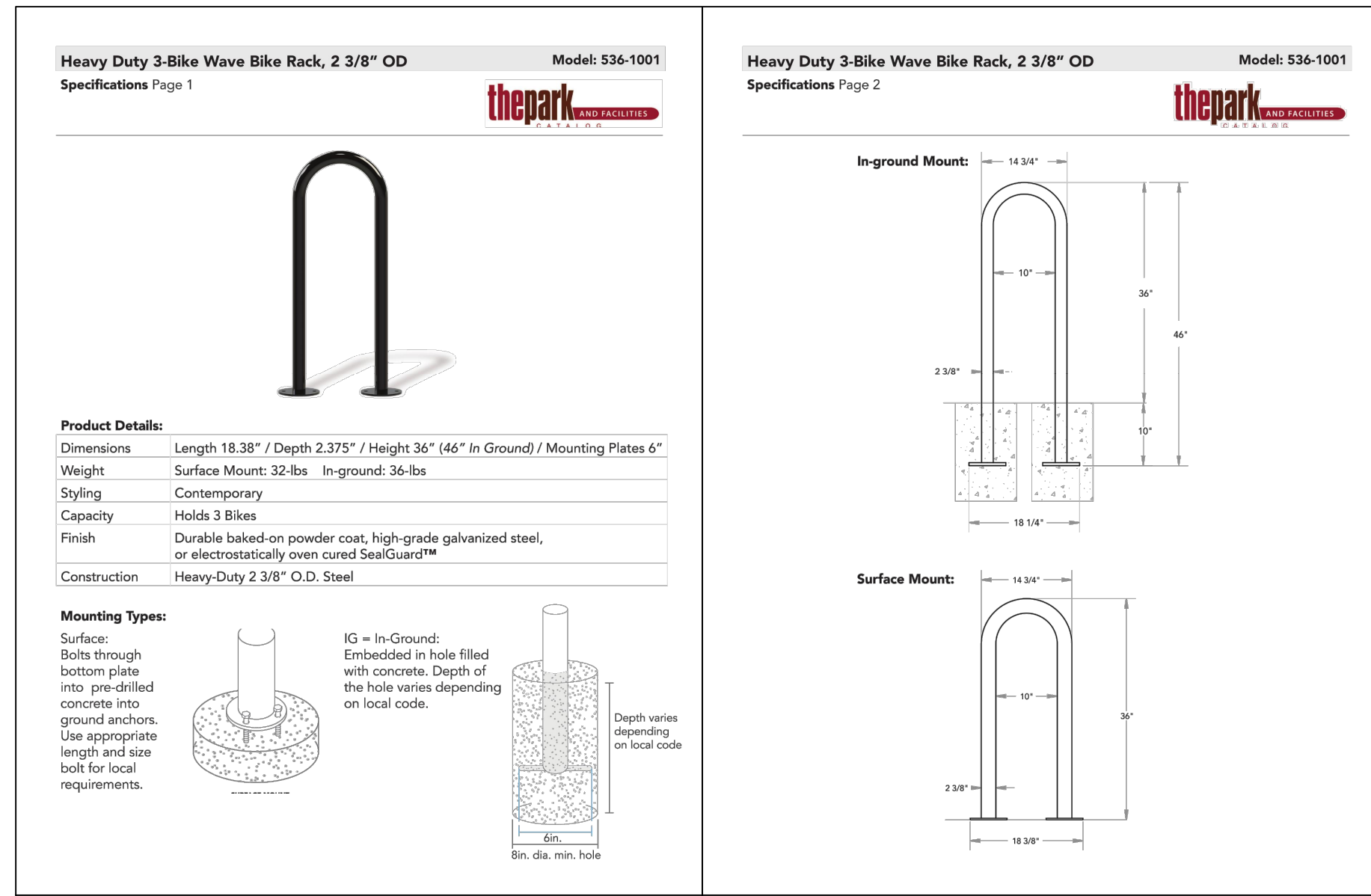
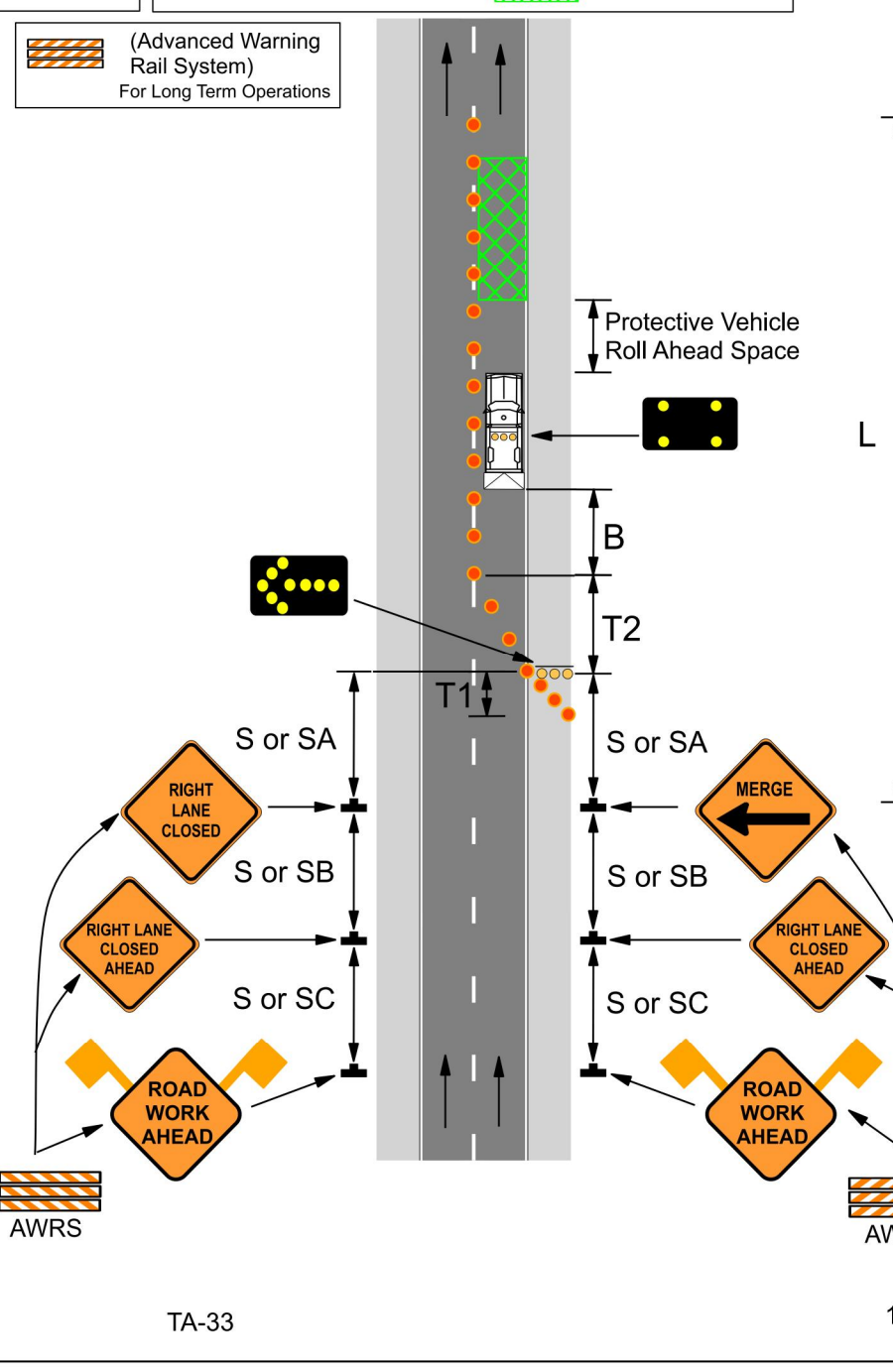
Additional warning signs shall be erected at each intersection within the work zone. Upon the discretion of the supervisor, additional warning signs may be erected at other intersections within the work zone.

For nighttime operations, review EPG 616.6.83 WARNING LIGHTS for use of sequential lights.

If rumble strips are used, review EPG 616.6.87 RUMBLE STRIPS.

For long-term operations, EPG 616.6.2.2 Flags and Advance Warning Rail System.

SEE EPG 616.12 WORK ZONE SPEED LIMITS FOR SPEED LIMIT GUIDELINES.



BIKE RACK DETAIL

PROJECT TITLE:
POINT WEST PROPERTIES LLC
601 PEARL DR.
ST. PETERS MO.
63376

ENGINEERING PLANNING SURVEYING
221 Point West Blvd.
St. Charles, MO 63301
636-928-6552
FAX 636-928-1718

CLIFFORD L. HEITMANN
REGISTERED PROFESSIONAL ENGINEER
E-25317
5-1-19

REVISIONS	
3-19-19	CITY COMMENTS
4-2-19	C.C.F.R. COMMENTS
5-1-19	CITY COMMENTS

Developer / Owner:
POINT WEST PROPERTIES LLC
103 ENTERPRISE DRIVE
WENTZVILLE, MO 63385
636-327-5575

P+Z No. # 18-006296
Approval Date: Aug. 2, 2018
City No. #
Page No. 14 of 20

CONSTRUCTION DETAILS

Issue Date: 3/16/2019
Box Project # 17-17337