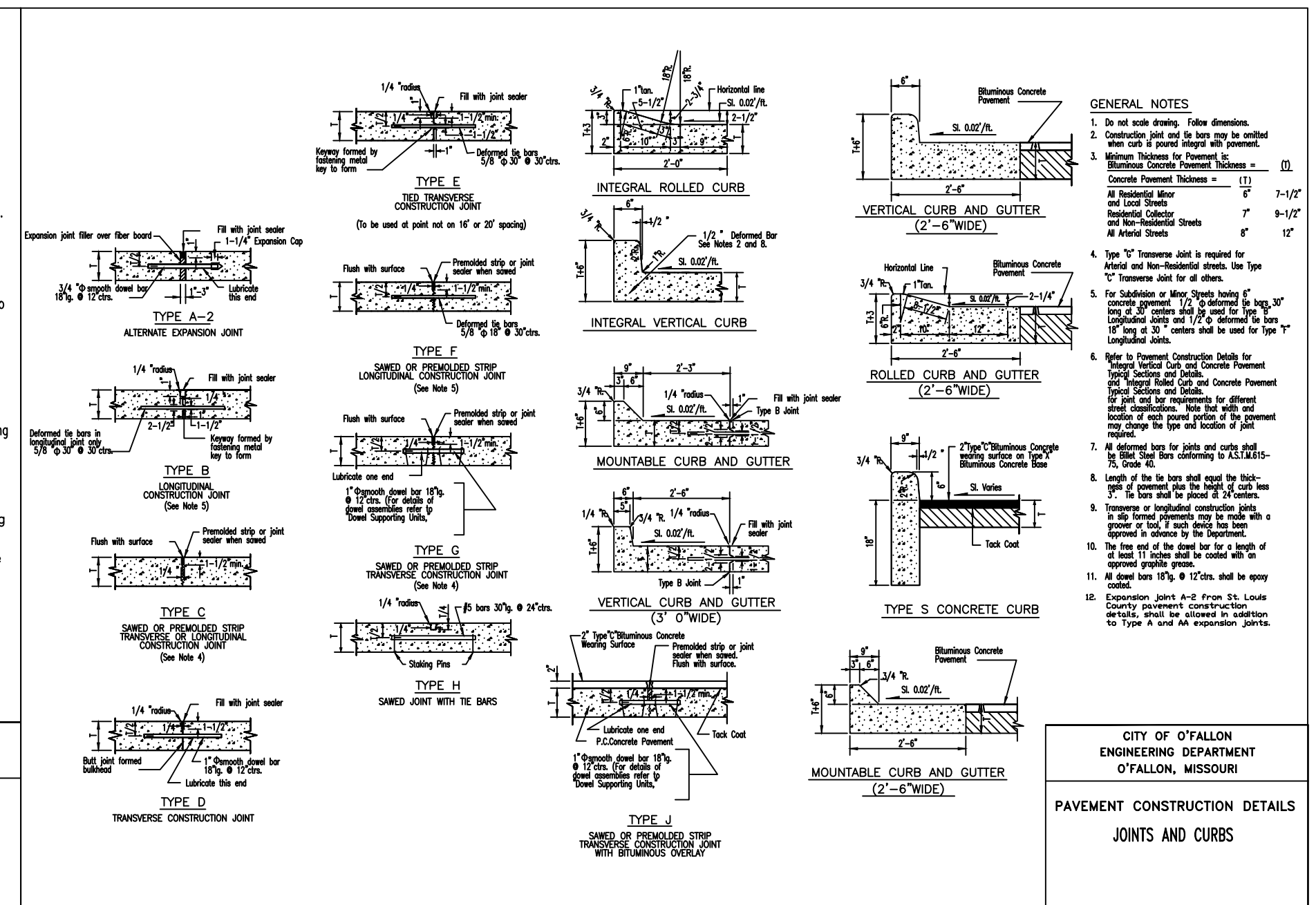


- GENERAL NOTES**
1. Do not scale drawing. Follow dimensions.
 2. Sidewalk and sidewalk curb ramps shall be constructed in accordance with these details and the current approved Americans with Disabilities Act Accessibility Guidelines (ADAAG).
 3. Minimum sidewalk width along 6" vertical curb shall be 5 feet. Minimum sidewalk width along 3" rolled curb shall be 4 feet.
 4. Maximum sidewalk cross slope 0.02'/ft.
 5. All sidewalk sections shall be 4" thick, except where indicated as 7" thick by shaded portions shown on details.
 6. Where curb ramps meet pavement, Bullnose will not be permitted.
 7. If integral concrete curb is constructed, strike a dummy joint across bottom of ramp at curb line. If concrete curb is cast-in-place, block out pavement to provide full depth curb across ramp from outer point of curb taper to outer point of curb taper.
 8. For pavement longitudinal and transverse joints and dowel and tie bar requirements and dimensions refer to the Pavement Construction Details for Joints and Curbs.
 9. For roadway cross slopes, pavement types, and thicknesses, refer to Standard Typical Sections.
 10. The intersection of two sidewalks or the intersection of a sidewalk and a driveway may serve as a wheelchair passing space on sidewalks less than 5 feet wide.
 11. All curb ramps shall have a detectable warning complying with Americans with Disabilities Act Accessibility Guidelines (ADAAG).
 12. All ramps must line up with the corresponding ramp on the other side of the street or intersection.
 13. All truncated domes shall run parallel to the road that it's crossing.
 14. Truncated warning domes shall not be stamped and will be a ADA approved product.

CITY OF O'FALLON
ENGINEERING DEPARTMENT
O'FALLON, MISSOURI

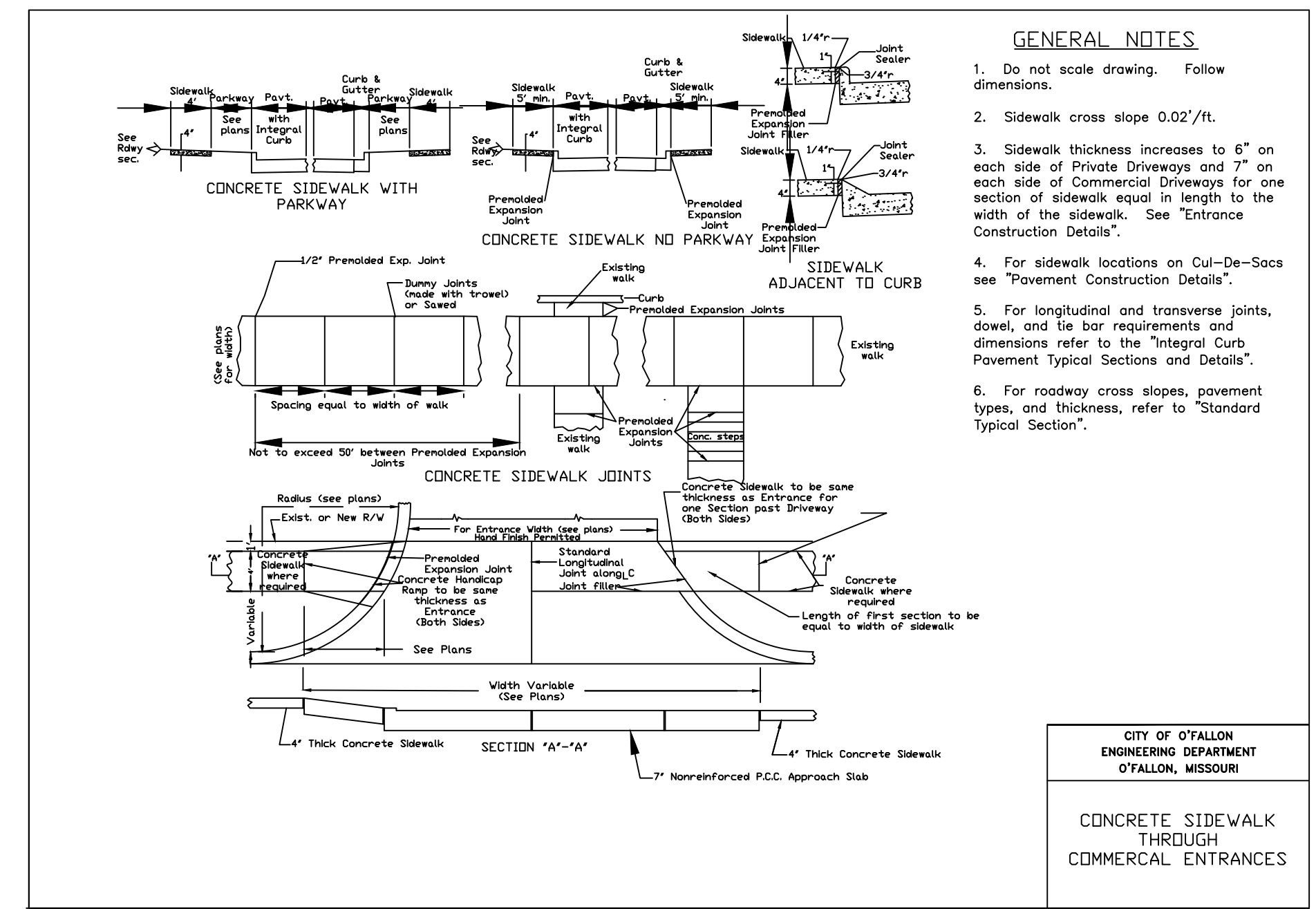
PAYMENT CONSTRUCTION DETAILS
CONCRETE SIDEWALK
AND CURB RAMPS



- GENERAL NOTES**
1. Do not scale drawing. Follow dimensions.
 2. Concrete joint and tie bar shall be installed with a 1/2" diameter steel bar.
 3. Minimum thickness for concrete curb shall be 4" for all areas.
 4. Type "T" Transverse Joint is required for Integral and Non-Integral curbs. See Note 12. Transverse Joint for all others.
 5. For locations where curb ramps are 10' long or less, the curb shall be 1/2" thick and the ramp shall be 1/2" thick. For curb ramps longer than 10' the curb shall be 1/2" thick and the ramp shall be 1/2" thick.
 6. All curb ramps shall have a detectable warning complying with Americans with Disabilities Act Accessibility Guidelines (ADAAG).
 7. Length of tie bar shall equal the thickness of the curb and gutter. Tie bars shall be installed in concrete curb and gutter.
 8. Transverse of longitudinal construction joints, dowel and tie bar requirements and dimensions refer to the "Integral Curb Pavement Typical Sections and Details".
 9. For roadway cross slopes, pavement types, and thickness, refer to "Standard Typical Section".

CITY OF O'FALLON
ENGINEERING DEPARTMENT
O'FALLON, MISSOURI

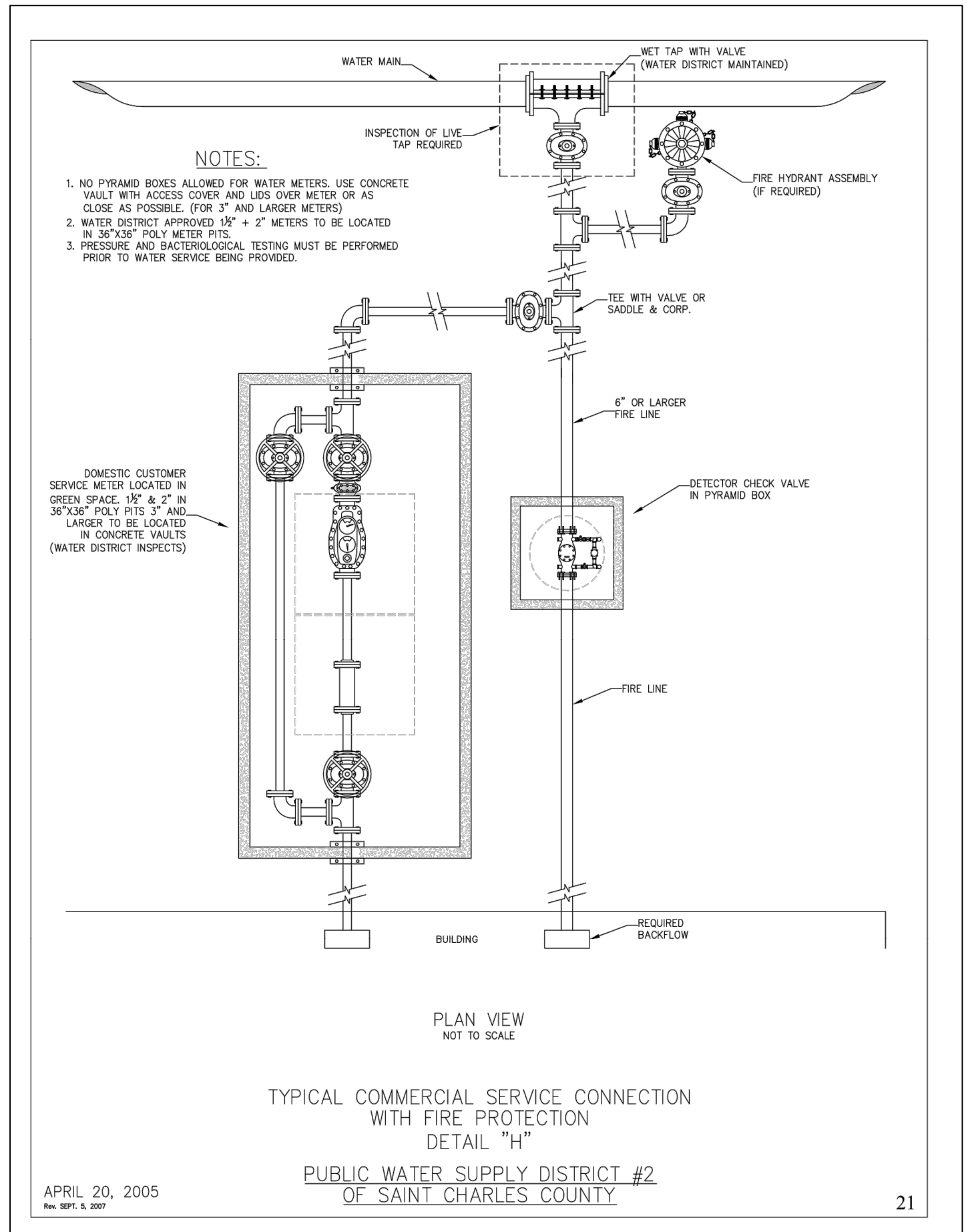
PAYMENT CONSTRUCTION DETAILS
JOINTS AND CURBS



- GENERAL NOTES**
1. Do not scale drawing. Follow dimensions.
 2. Sidewalk cross slope 0.02'/ft.
 3. Sidewalk thickness increases to 6" on each side of Private Driveways and 7" on each side of Commercial Driveways for one section of sidewalk equal in length to the width of the sidewalk. See "Entrance Construction Details".
 4. For sidewalk locations on Cul-De-Sacs see "Pavement Construction Details".
 5. For longitudinal and transverse joints, dowel, and tie bar requirements and dimensions refer to the "Integral Curb Pavement Typical Sections and Details".
 6. For roadway cross slopes, pavement types, and thickness, refer to "Standard Typical Section".

CITY OF O'FALLON
ENGINEERING DEPARTMENT
O'FALLON, MISSOURI

CONCRETE SIDEWALK
THROUGH
COMMERCIAL ENTRANCES



- NOTES:**
1. NO PYRAMD BOXES ALLOWED FOR WATER METERS. USE CONCRETE VAULTS WITH ACCESS COVER AND USE OVER METERS OR AS CLOSE AS POSSIBLE. (FOR 3" AND LARGER METERS)
 2. WATER DISTRICT APPROVED 18" x 24" METERS TO BE LOCATED IN 36"x36" POLY METER FITS.
 3. PRESSURE AND BACTERIOLOGICAL TESTING MUST BE PERFORMED PRIOR TO WATER SERVICE BEING PROVIDED.

APRIL 20, 2005
TYPICAL COMMERCIAL SERVICE CONNECTION WITH FIRE PROTECTION DETAIL "H"
PUBLIC WATER SUPPLY DISTRICT #2 OF SAINT CHARLES COUNTY

PROJECT TITLE:
POINT WEST PROPERTIES LLC
601 PEARL DR.
ST. PETERS MO.
63376

ENGINEERING FIRM:
PLANETARY SURVEYING
22 Point West Blvd
St. Charles, MO 63001
636-928-5552
FAX 928-1718

REFERENCE DRAWINGS ONLY, ENGINEERS SEAL DOES NOT APPLY TO THESE DETAILS

REVISIONS

3-19-19	CITY COMMENTS
4-2-19	C.C.F.R. COMMENTS
5-1-19	CITY COMMENTS

Developer / Owner:
POINT WEST PROPERTIES LLC
103 ENTERPRISE DRIVE
WENTZVILLE, MO 63385
636-327-5575

PAVEMENT AND WATER DETAILS

P+Z No. #18-006296
Approval Date: Aug. 2, 2018
City No. #