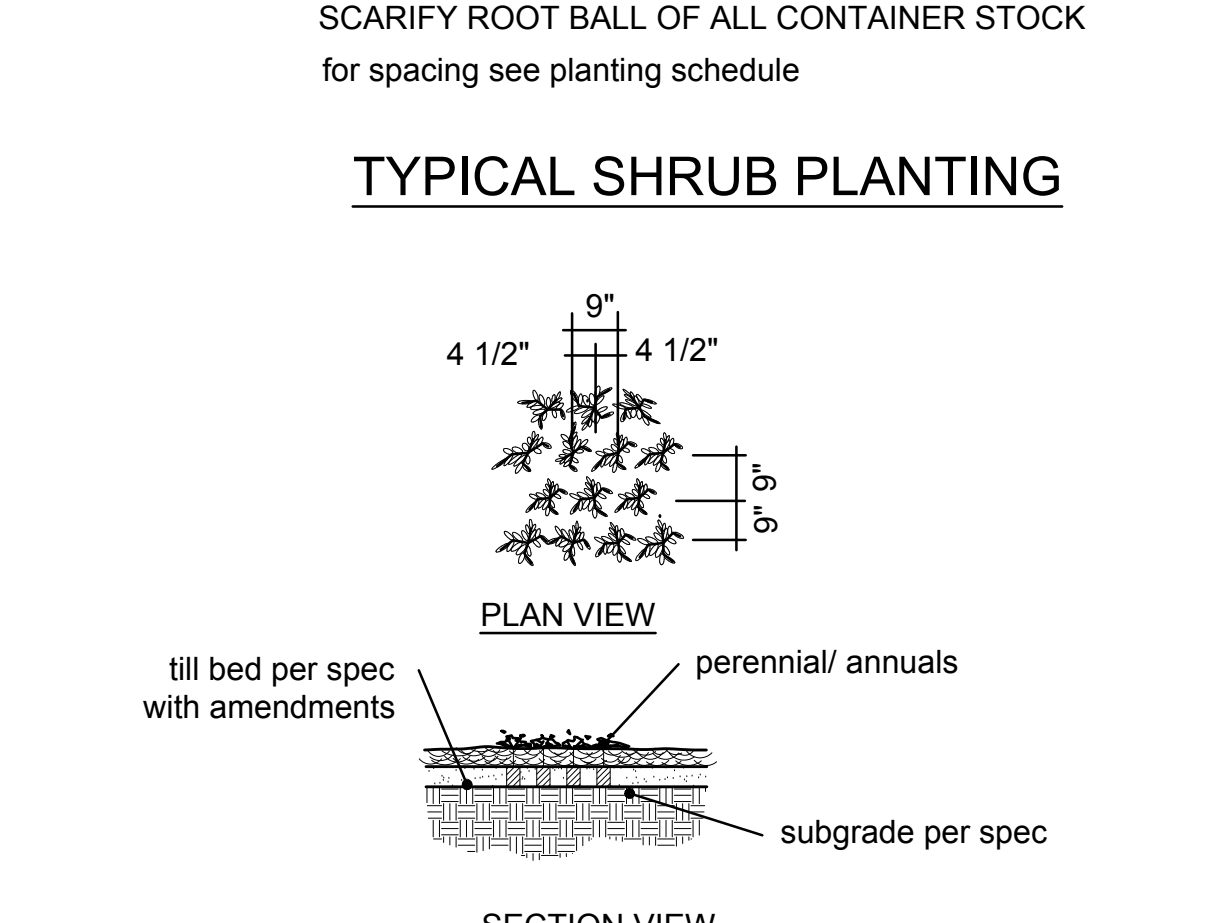
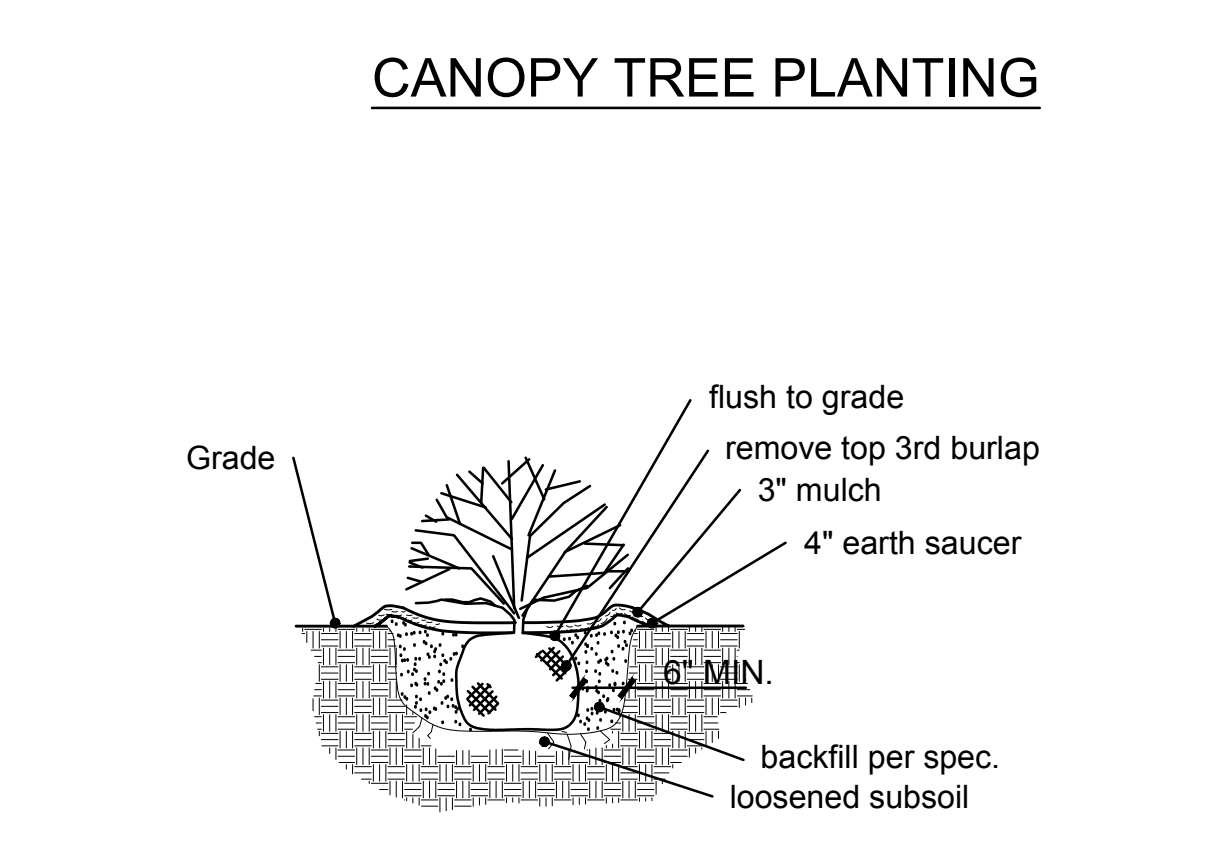
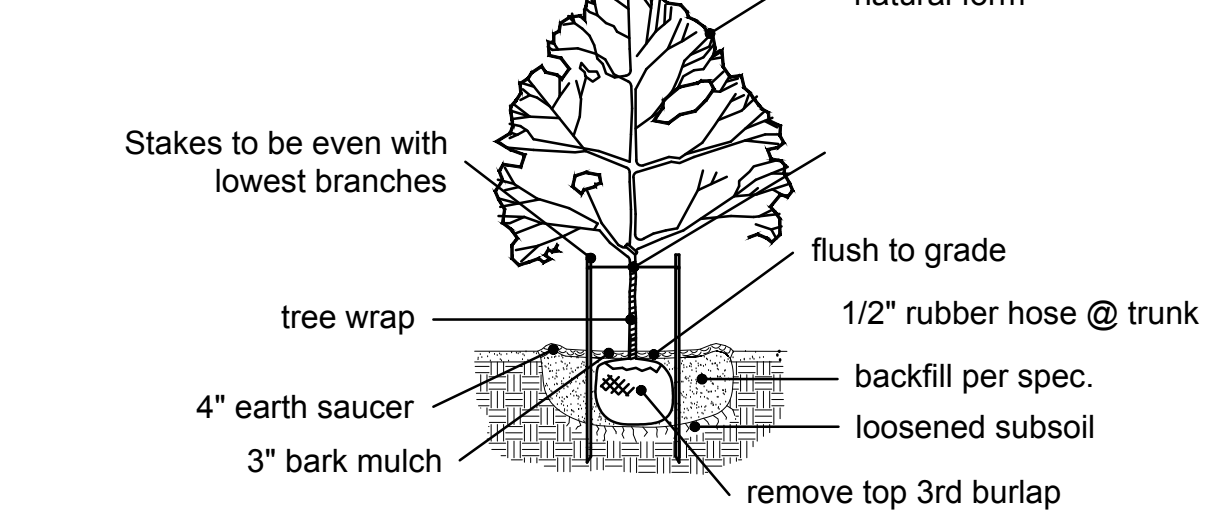
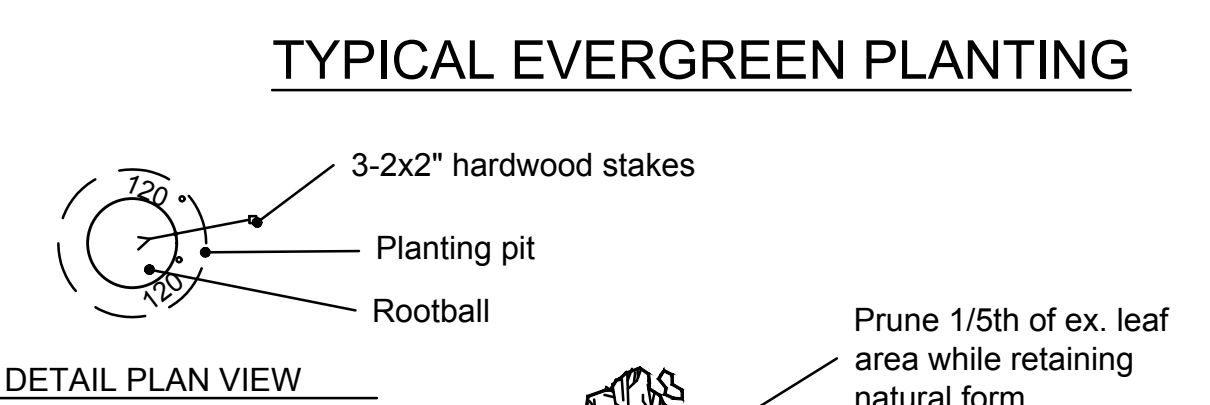
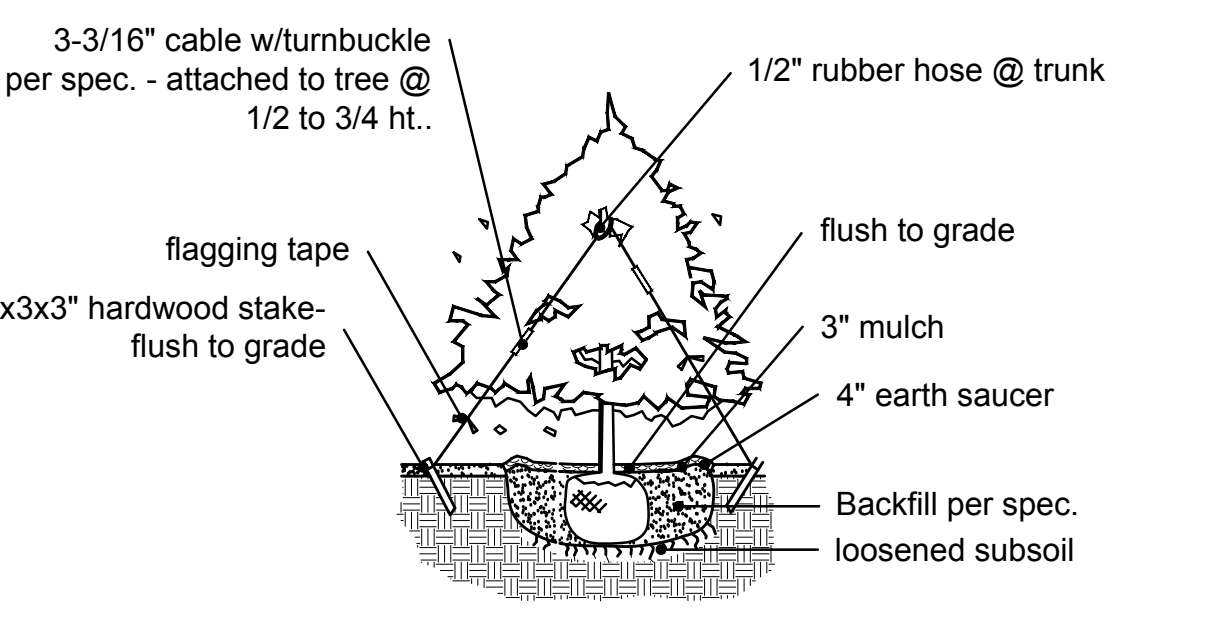
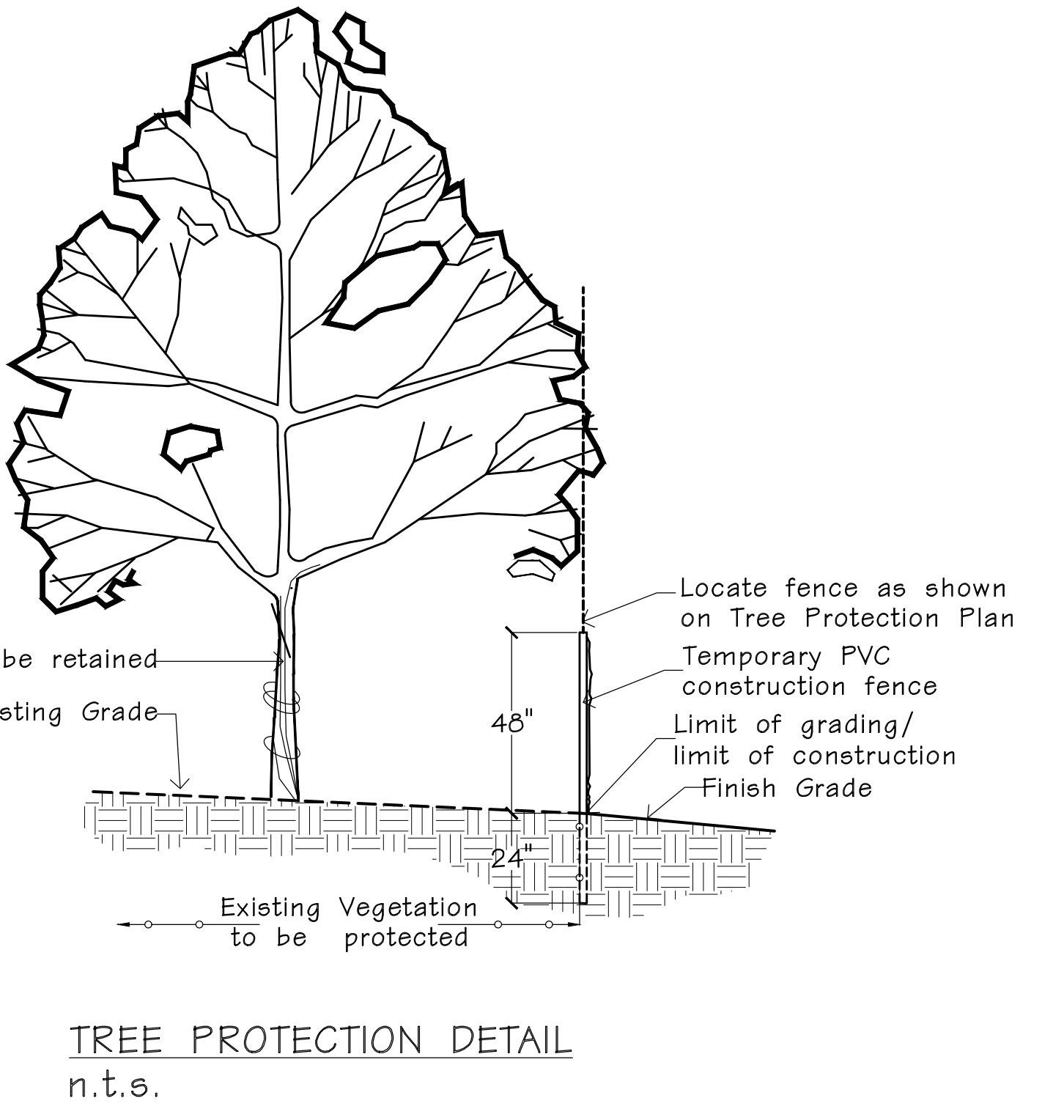
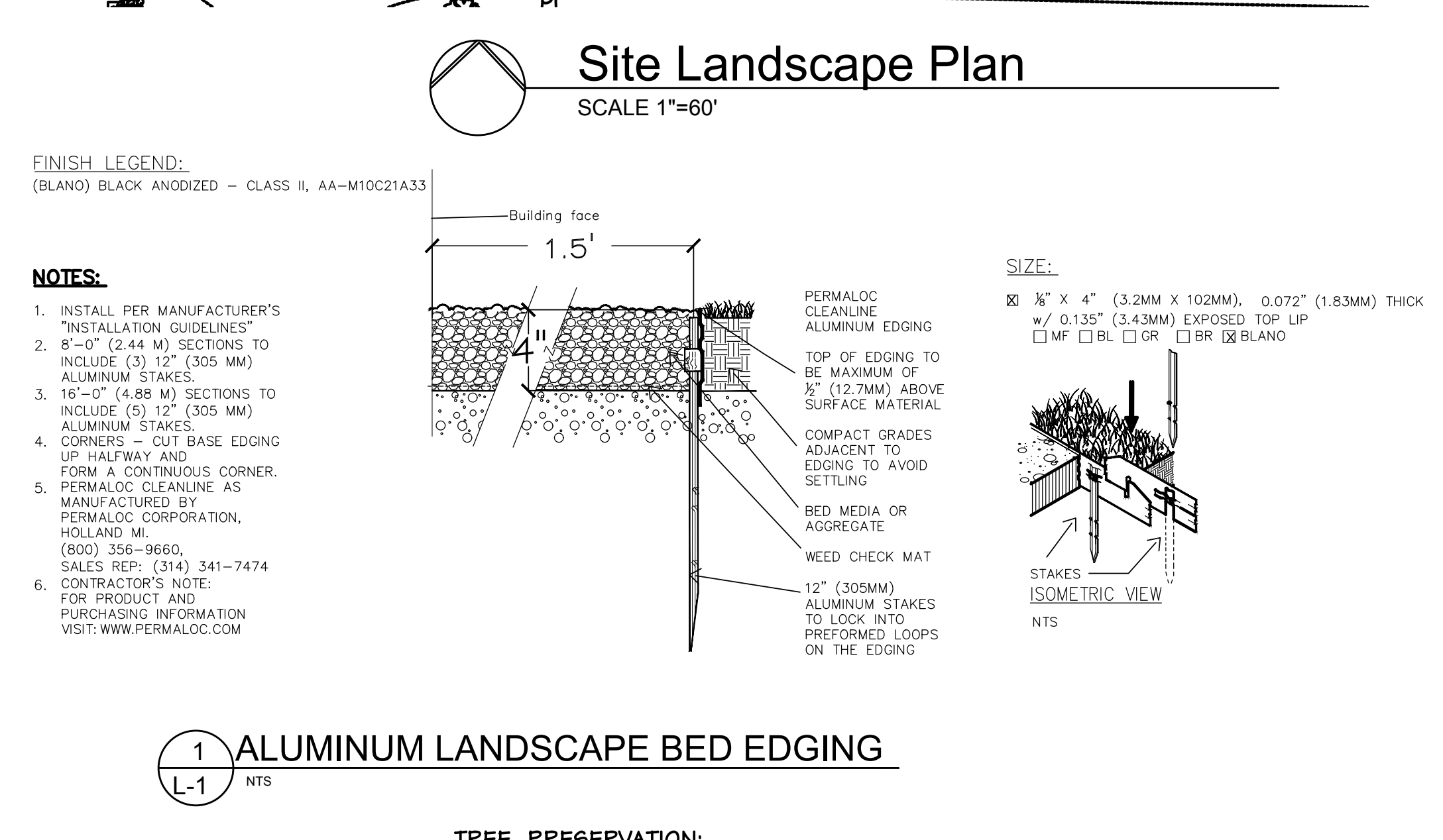
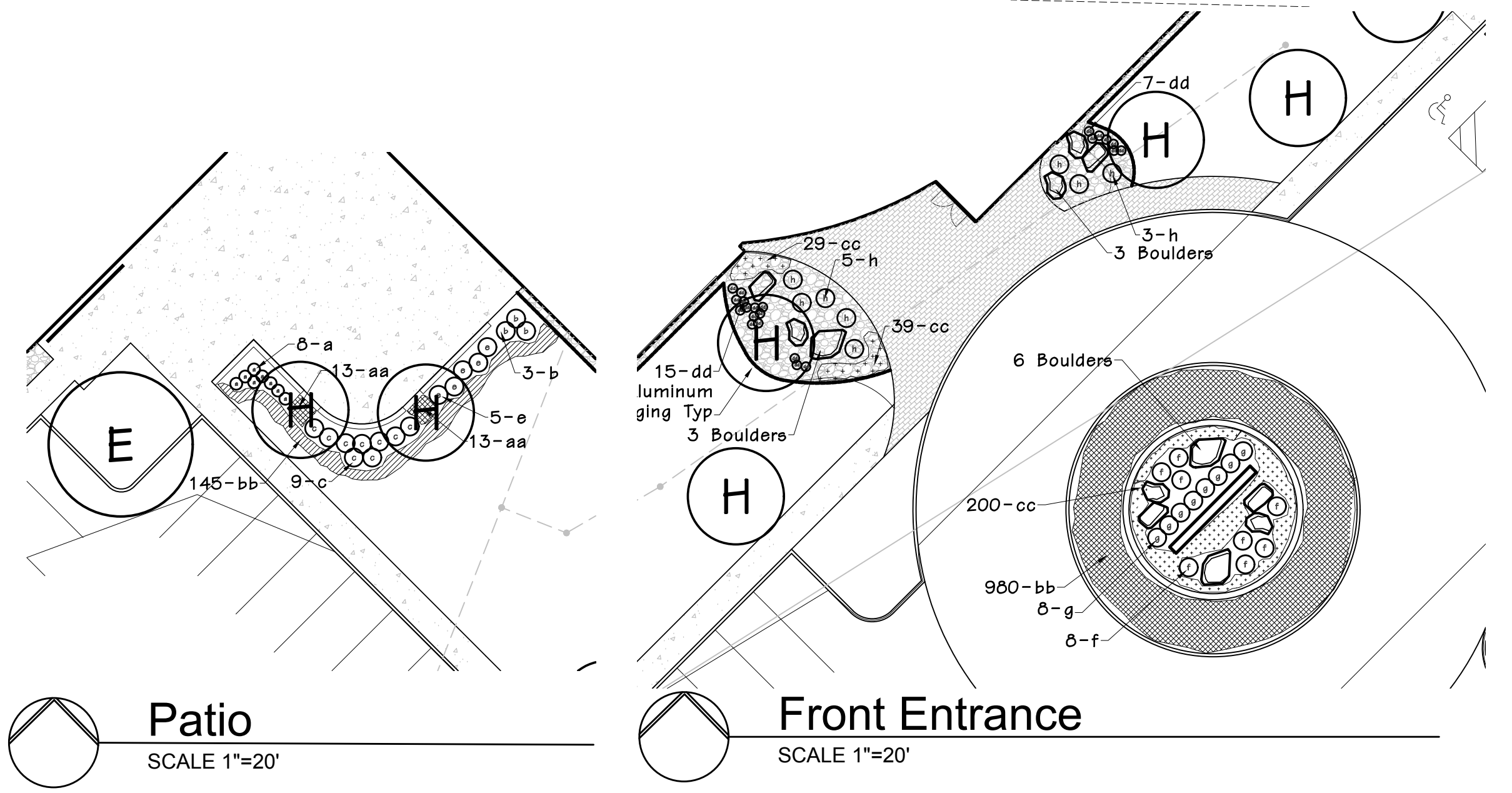
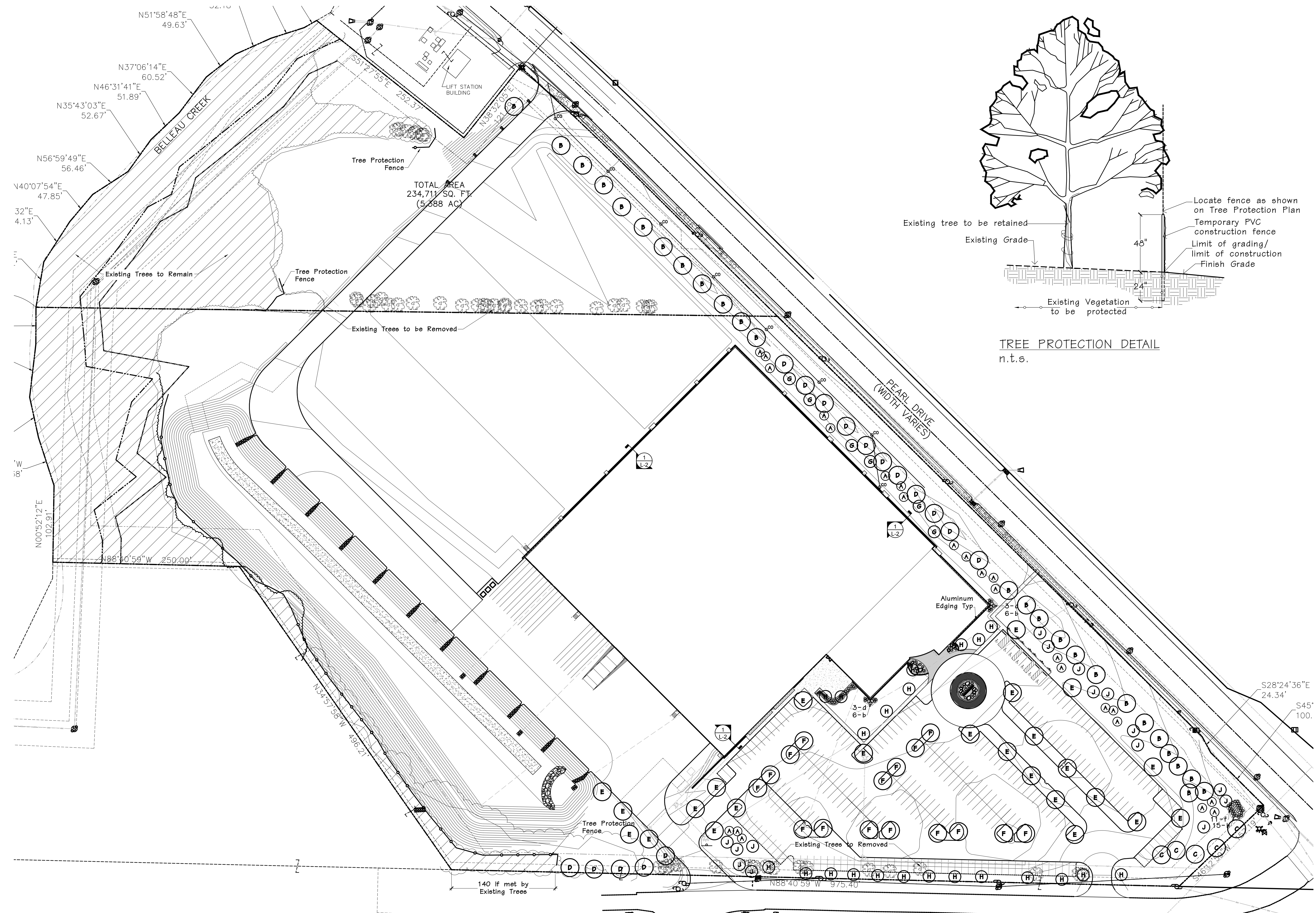




Douglas A. DeLong, Landscape Architect LA-81
 Consultants:

COSMOS CORP
 O'Fallon, Missouri



LANDSCAPE REQUIREMENTS:
 STREET TREES = 1 tree per 40 lf
 MEMC Dr.: 1,132.57 lf/40=28.3 or 29 trees
 Trees Provided = 29 (4 by existing trees)
 Pearl Drive: 1,405.73 lf/40=35.14 or 36 trees
 Trees Provided = 36
 Landscape Space: 288,672 sf.
 1 tree per 3,000 sf = 96 trees
 Trees Provided = 96

PLANTING SCHEDULE						
SYMBOL	QUANTITY	BOTANICAL NAME	COMMON NAME	SIZE	MATURE HEIGHT	Notes
A	24	<i>Picea abies</i>	Norway Spruce	0-10'	45'+	
B	26	<i>Acer rubrum 'Armstrong'</i>	Armstrong Red Maple	2'	45'+	
C	5	<i>Acer saccharum 'Newton's Sentry'</i>	Newton Sentry Sugar Maple	2'	45'+	
D	15	<i>Quercus robur 'Fastiglata'</i>	Columnar English Oak	2'	45'+	
E	25	<i>Tilia americana 'Redmond'</i>	Redmond Linden	2'	45'+	
F	16	<i>Liriodendron tulipifera</i>	Tulip Tree	2'	45'+	
G	6	<i>Crataegus viridis 'Winter King'</i>	Winter King Hawthorn	2'	25'	
H	22	<i>Cercis canadensis 'Merlot'</i>	Merlot Red Bud	2'	12-15'	
J	15	<i>Malus 'Robinson'</i>	Robinson Flowering Crab	2'	20'+	
a	6	<i>Buxus microphylla 'Wintergreen'</i>	Wintergreen Boxwood	18-24"		2.5' O.C.
b	15	<i>Ilex X 'Mesog' 'China Girl'</i>	China Girl Holly	18-24"		3' O.C.
c	9	<i>Itea virginica 'Henry's Garnet'</i>	Henry's Garnet Sweetaspire	18-24"		3' O.C.
d	6	<i>Pyracantha angustifolia 'Gnome'</i>	Gnome Pyracantha	30-36"		4' O.C.
e	5	<i>Spiraea japonica 'Froebelii'</i>	Japanese Spirea	18-24"		3' O.C.
f	19	<i>Berberis thunbergii 'Rose Glow'</i>	Rose Glow Barberry	18-24"		as shown
g	6	<i>Taxus x media 'Hicksii'</i>	Hicks Yew	36"		3' O.C.
h	22	<i>Juniperus virginiana 'Gray Owl'</i>	Gray Owl Juniper	18-24"		as shown
aa	26	<i>Hemerocallis 'Stella de Oro'</i>	Stella de Oro Daylily	1 qt		12" O.C.
bb	1,125	<i>Liriope muscarif 'Big Blue'</i>	Big Blue Lilyturf	1 qt		12" O.C.
cc	266	<i>Sedum 'Purple Emperor'</i>	Autumn Stonecrop	1 qt		12" O.C.
dd	22	<i>Sporobolus heterolepis</i>	Prairie Dropseed	1 gal		16" O.C.

Revisions:		
Date	Description	No.
04/29/19	City Comments	1
05/15/19	City Comments	2

Drawn: DAD
 Checked: BAD

DeLong Landscape Architecture, LLC
 7620 West Bruno Ave
 St. Louis, MO, 63117
 (314) 346-4856
 delong.la@gmail.com

Sheet Title: Landscape Plan
 Sheet No: L-1

Date: 4/8/2019
 Job #: 114,026