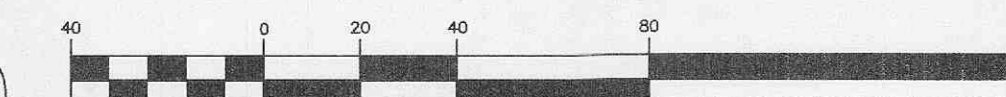


GRAPHIC SCALE

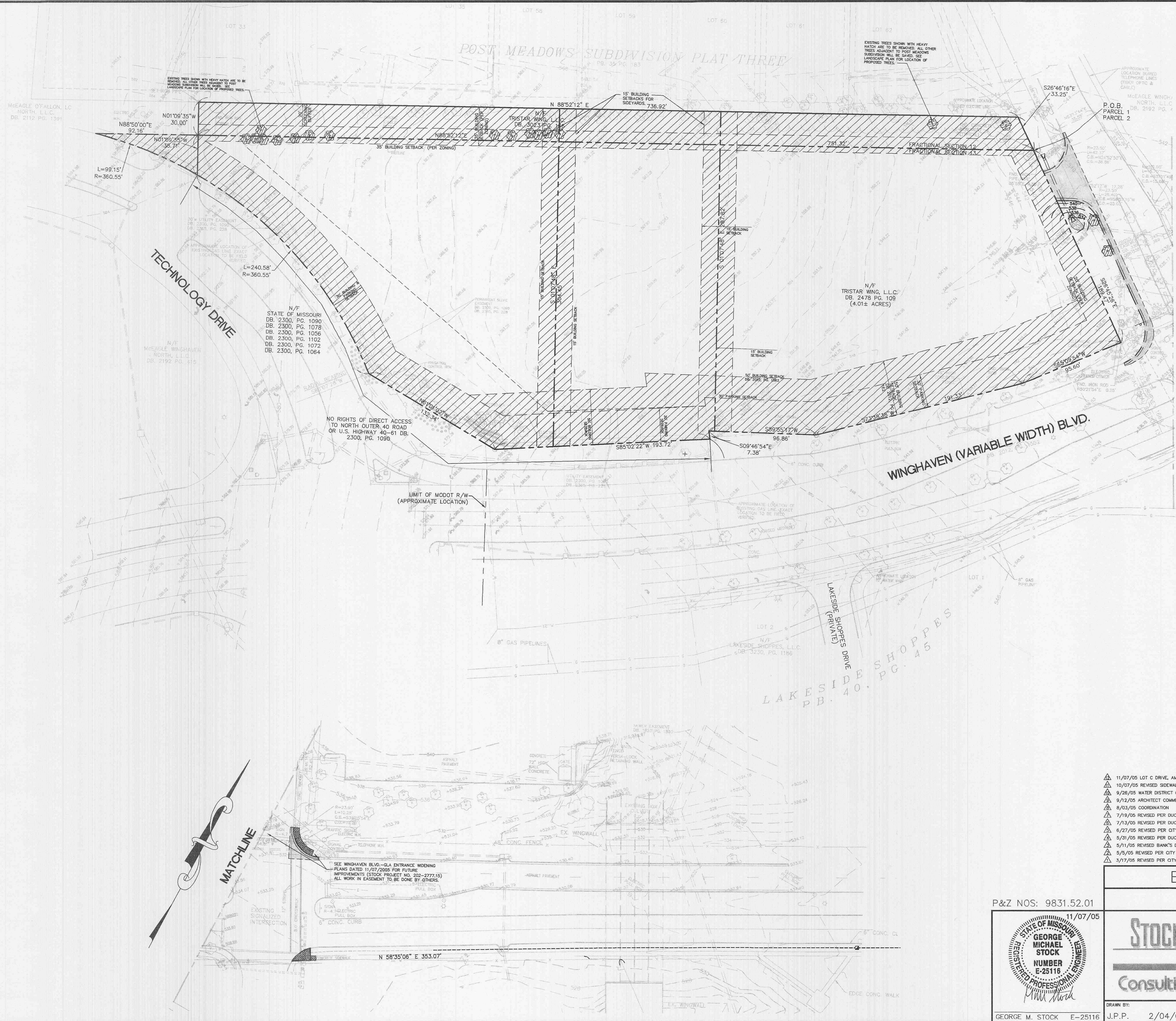


(IN FEET)
1 inch = 40 ft.

TREE PRESERVATION

TOTAL TREES (1):	39
MINIMUM NO. REQUIRED TO BE PRESERVED:	8
ACTUAL NUMBER PRESERVED:	27
EXCESS PRESERVED:	27-8=19

(1) DEFINED BY ZONING ORDINANCE CH 230.

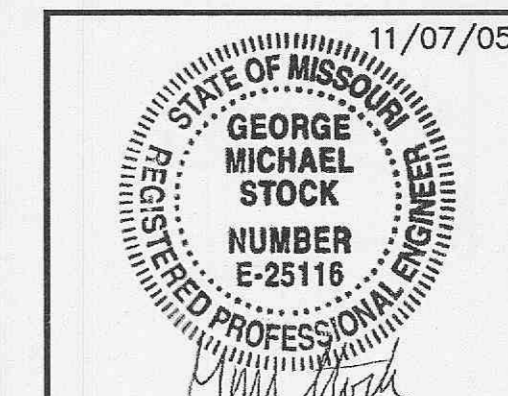


- ▲ 11/07/05 LOT C DRIVE, AMEREN
- ▲ 10/07/05 REVISED SIDEWALK
- ▲ 9/28/05 WATER DISTRICT COMMENTS
- ▲ 9/12/05 ARCHITECT COMMENTS
- ▲ 8/03/05 COORDINATION
- ▲ 7/19/05 REVISED PER DUCKETT CREEK'S COMMENTS DATED 7/19/05
- ▲ 7/13/05 REVISED PER DUCKETT CREEK'S COMMENTS DATED 7/8/05
- ▲ 6/27/05 REVISED PER CITY OF OT'ALLON'S COMMENTS 5/22/05 & DUCKETT CREEK'S COMMENTS DATED 6/15/05
- ▲ 5/31/05 REVISED PER DUCKETT CREEK'S MARK-UP PLAN (ADD MH, REV. ALIGNMENT)
- ▲ 5/11/05 REVISED BANK'S DRIVEWAY FOR STACKING REQUIREMENT
- ▲ 5/5/05 REVISED PER CITY COMMENT LETTER DATED 4-8-05, DUCKETT CREEK COMMENTS (ALIGNMENT), MODOT(4-8-05)
- ▲ 3/17/05 REVISED PER CITY COMMENT LETTER DATED 2-24-05, PWSID NO. 2 (2-14-05), DUCKETT CREEK (2-15-05)

EXISTING CONDITIONS PLAN

THE POINTE AT WINGHAVEN

P&Z NOS: 9831.52.01



STOCK & ASSOCIATES
Consulting Engineers, Inc.

257 Chesterfield Business Parkway
 St. Louis, MO 63005
 PH. (636) 530-9100
 FAX (636) 530-9130
 e-mail: general@stockassoc.com
 Web: www.stockassoc.com

DRAWN BY:	DATE:	CHECKED BY:	DATE:	JOB NUMBER:	SHEET:
J.P.P.	2/04/05	G.M.S.	2/04/05	204-3385	C3 of 13

GEORGE M. STOCK E-25116