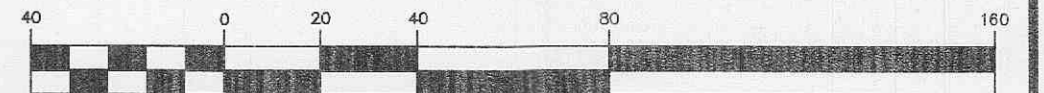


GRAPHIC SCALE



(IN FEET)
1 inch = 40 ft.

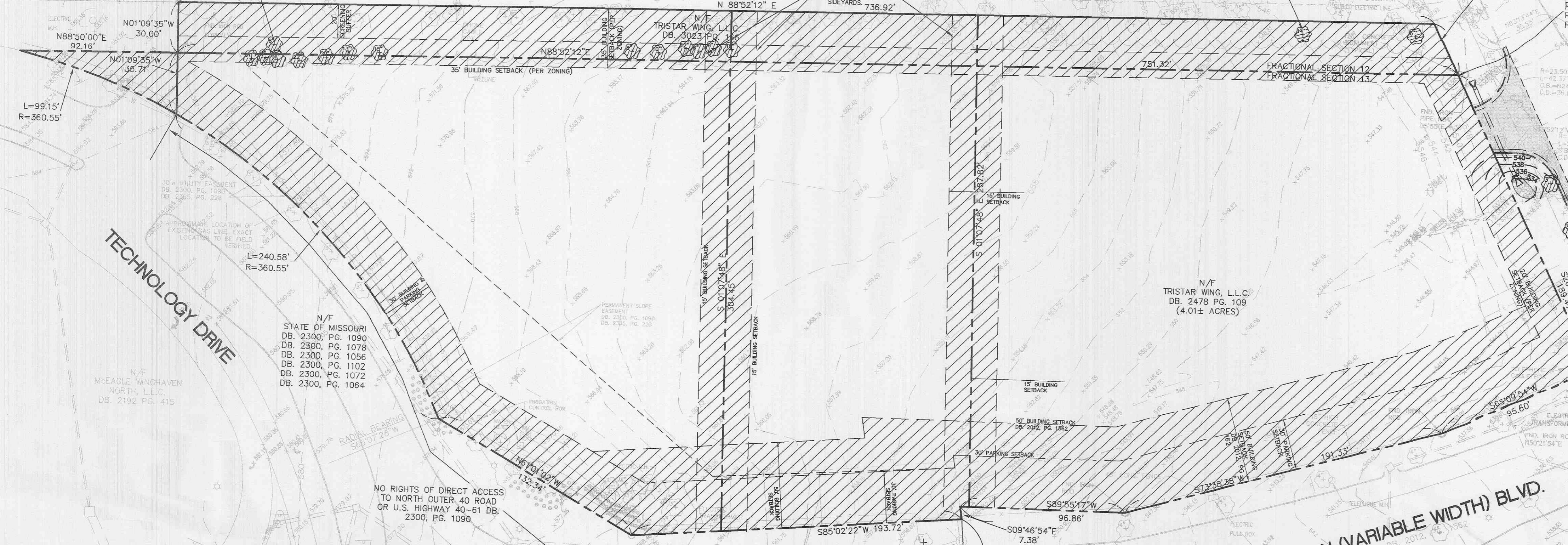
TREE PRESERVATION

TOTAL TREES (1):	39
MINIMUM NO. REQUIRED TO BE PRESERVED:	8
ACTUAL NUMBER PRESERVED:	27
EXCESS PRESERVED:	27-8=19
(1) DEFINED BY ZONING ORDINANCE CH 230.	

MATCHLINE

POST MEADOWS SUBDIVISION PLAT THREE

McEAGLE O'FALLON, LC
NORTH, L.L.C.
DB. 2112 PG. 1331

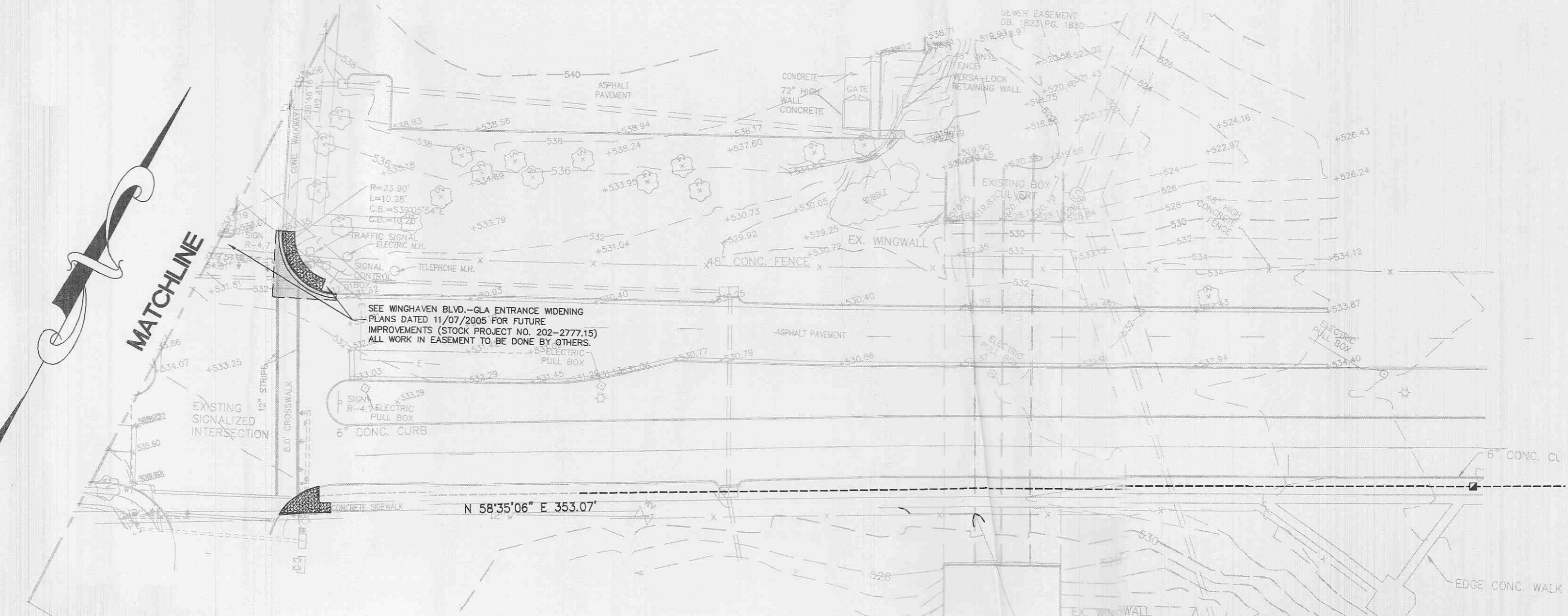


TECHNOLOGY DRIVE

WINGHAVEN (VARIABLE WIDTH) BLVD.

LAKESIDE SHOPPES
PG. 45

MATCHLINE

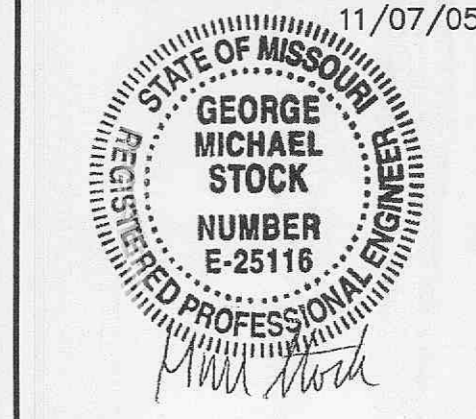


- ▲ 11/07/05 LOT C DRIVE, AMEREN
- ▲ 10/07/05 REVISED SIDEWALK
- ▲ 9/28/05 WATER DISTRICT COMMENTS
- ▲ 9/12/05 ARCHITECT COMMENTS
- ▲ 8/03/05 COORDINATION
- ▲ 7/18/05 REVISED PER DUCKETT CREEK'S COMMENTS DATED 7/18/05
- ▲ 7/13/05 REVISED PER DUCKETT CREEK'S COMMENTS DATED 7/8/05
- ▲ 6/27/05 REVISED PER CITY OF O'FALLON'S COMMENTS 5/22/05 & DUCKETT CREEK'S COMMENTS DATED 6/15/05
- ▲ 5/31/05 REVISED PER DUCKETT CREEK'S MARK-UP PLAN (ADD NH, REV. ALIGNMENT)
- ▲ 5/11/05 REVISED BANK'S DRIVEWAY FOR STACKING REQUIREMENT
- ▲ 5/8/05 REVISED PER CITY COMMENT LETTER DATED 4-8-05, DUCKETT CREEK COMMENTS (ALIGNMENT), MODOT(4-8-05)
- ▲ 3/17/05 REVISED PER CITY COMMENT LETTER DATED 2-24-05, PMSD NO. 2 (2-14-05), DUCKETT CREEK (2-15-05)

EXISTING CONDITIONS PLAN

THE POINTE AT WINGHAVEN

P&Z NOS: 9831.52.01



STOCK & ASSOCIATES
Consulting Engineers, Inc.

257 Chesterfield Business Parkway
St. Louis, MO 63005
PH. (636) 530-9100
FAX (636) 530-9130
e-mail: general@stockassoc.com
Web: www.stockassoc.com