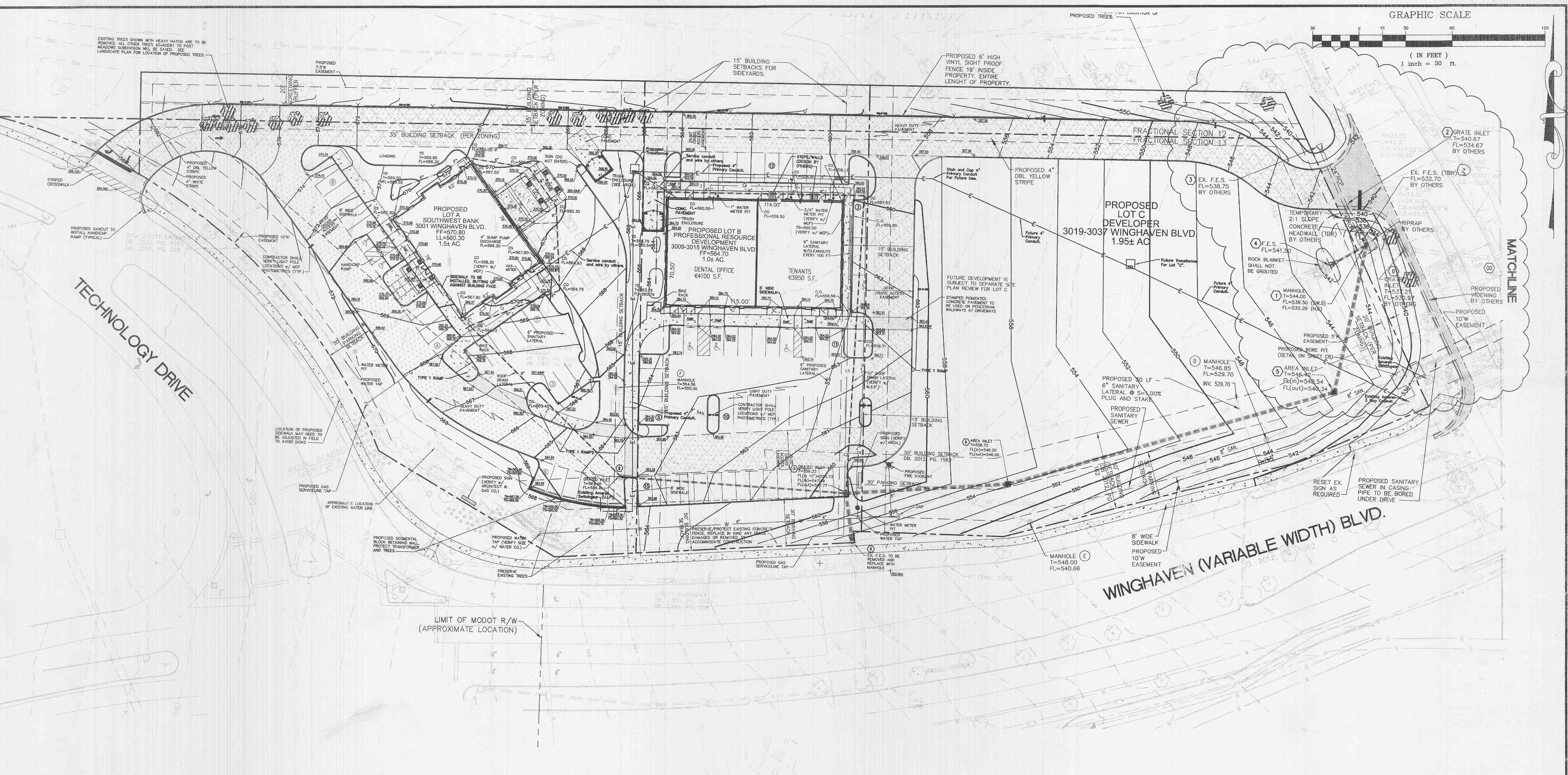


(IN FEET)
1 inch = 30 ft.



TECHNOLOGY DRIVE

WINGHAVEN (VARIABLE WIDTH) BLVD.

MATCHLINE

LIMIT OF MODOT R/W (APPROXIMATE LOCATION)

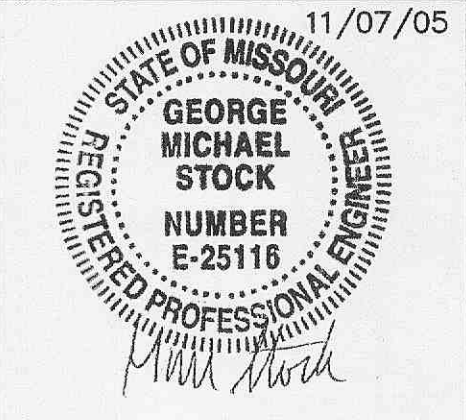
PAVEMENT LEGEND

LIGHT-DUTY ASPHALT	
HEAVY-DUTY ASPHALT	
CONCRETE PAVEMENT	
INGRESS/EGRESS EASEMENT	

- ▲ 11/07/05 LOT C DRIVE, AMEREN
- ▲ 10/07/05 REVISED SIDEWALK
- ▲ 9/26/05 WATER DISTRICT COMMENTS
- ▲ 9/12/05 ARCHITECT COMMENTS
- ▲ 8/03/05 COORDINATION
- ▲ 7/19/05 REVISED PER DUCKETT CREEK'S COMMENTS DATED 7/19/05
- ▲ 7/13/05 REVISED PER DUCKETT CREEK'S COMMENTS DATED 7/8/05
- ▲ 6/27/05 REVISED PER CITY OF FALLOON'S COMMENTS 5/22/05 & DUCKETT CREEK'S COMMENTS DATED 6/15/05
- ▲ 5/31/05 REVISED PER DUCKETT CREEK'S MARK-UP PLAN (ADD MH, REV. ALIGNMENT)
- ▲ 5/11/05 REVISED BANK'S DRIVEWAY FOR STACKING REQUIREMENT
- ▲ 5/5/05 REVISED PER CITY COMMENT LETTER DATED 4-8-05, DUCKETT CREEK COMMENTS (ALIGNMENT), MODOT(4-8-05)
- ▲ 3/17/05 REVISED PER CITY COMMENT LETTER DATED 2-24-05, PWS# NO. 2 (2-14-05), DUCKETT CREEK (2-15-05)

SITE AND GRADING PLAN
THE POINTE AT WINGHAVEN

P&Z NOS: 9831.52.01



STOCK & ASSOCIATES
Consulting Engineers, Inc.

257 Chesterfield Business Parkway
St. Louis, MO 63005
PH. (636) 530-9100
FAX (636) 530-9130
e-mail: general@stockassoc.com
Web: www.stockassoc.com

SEE WINGHAVEN BLVD.-GLA ENTRANCE WIDENING PLANS DATED 11/07/2005 FOR FUTURE IMPROVEMENTS (STOCK PROJECT NO. 202-2777-15) ALL WORK IN EASEMENT TO BE DONE BY OTHERS.

PRESERVE/PROTECT EXISTING CONCRETE FENCE. REPLACE IN KIND ANY FENCE DAMAGED OR REMOVED TO ACCOMMODATE CONSTRUCTION

ROCK BLANKET ON GEOTEXTILE MSD NO. 5 (10' WIDE TO APPROX. EL. 524)

MANHOLE T=530.00± FL=516.50

MANHOLE T=548.00 FL=540.66

MANHOLE T=544.00 FL=536.50 (SW,S) FL=532.26 (NS)

MANHOLE T=546.85 INV. 529.70

AREA INLET FL(in)=546.42 FL(out)=540.54

AREA INLET FL(in)=546.20 FL(out)=546.00

AREA INLET T=546.70 FL=540.00

AREA INLET T=546.70 FL=540.00

AREA INLET T=546.70 FL=540.00

AREA INLET T=546.70 FL=540.00

AREA INLET T=546.70 FL=540.00

AREA INLET T=546.70 FL=540.00

AREA INLET T=546.70 FL=540.00

AREA INLET T=546.70 FL=540.00

AREA INLET T=546.70 FL=540.00

AREA INLET T=546.70 FL=540.00

AREA INLET T=546.70 FL=540.00

AREA INLET T=546.70 FL=540.00

AREA INLET T=546.70 FL=540.00

AREA INLET T=546.70 FL=540.00