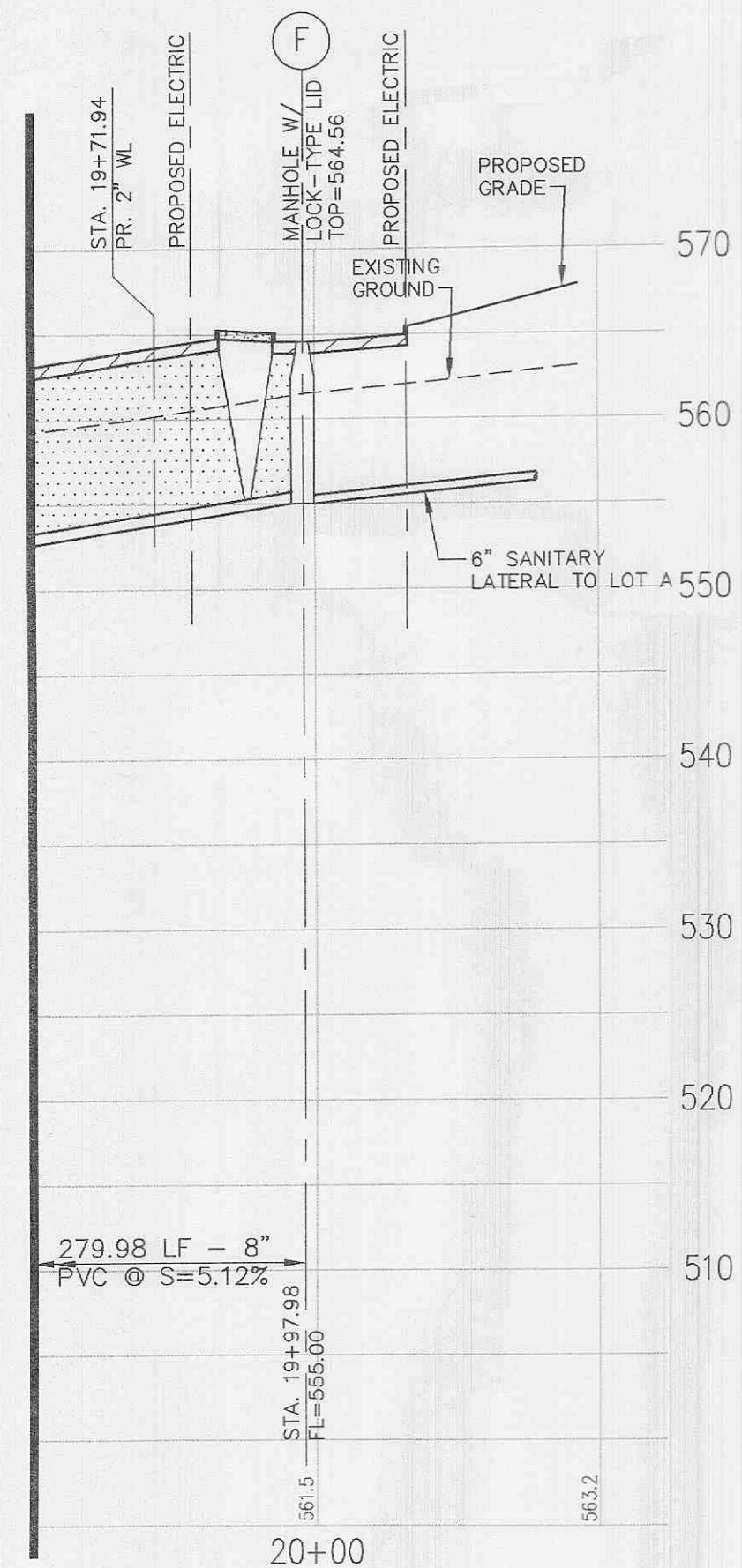


SANITARY SEWER PROFILE

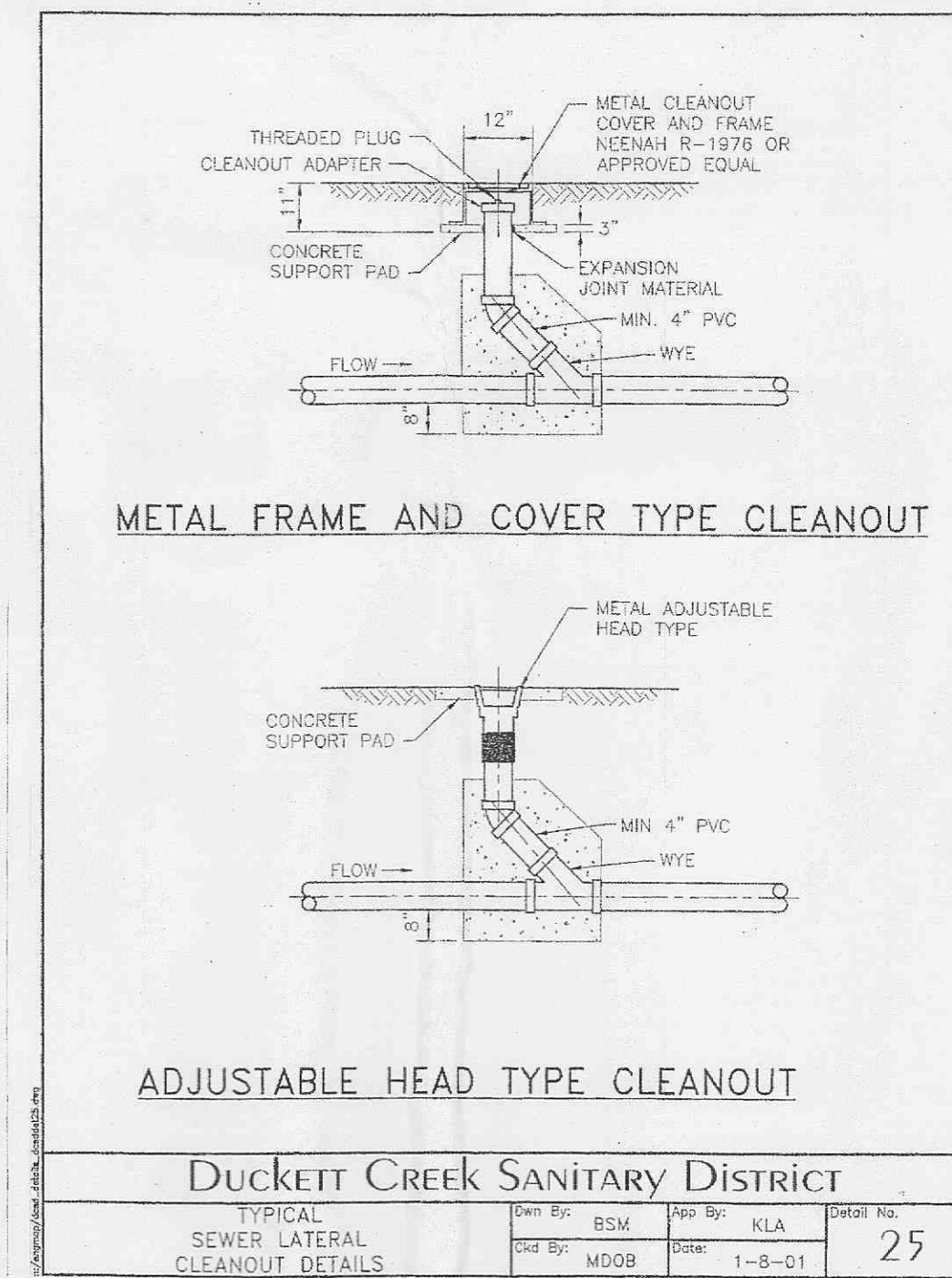
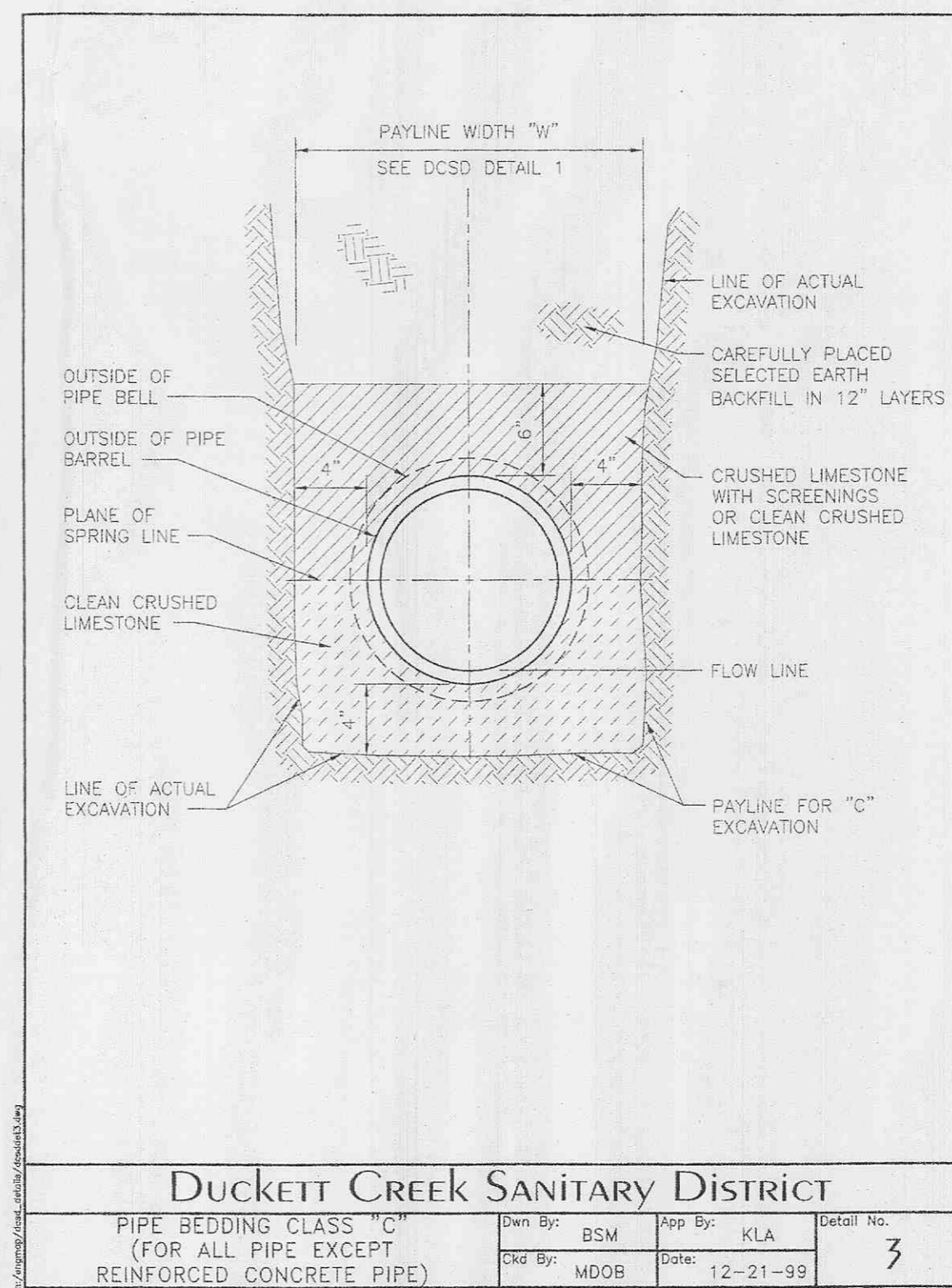
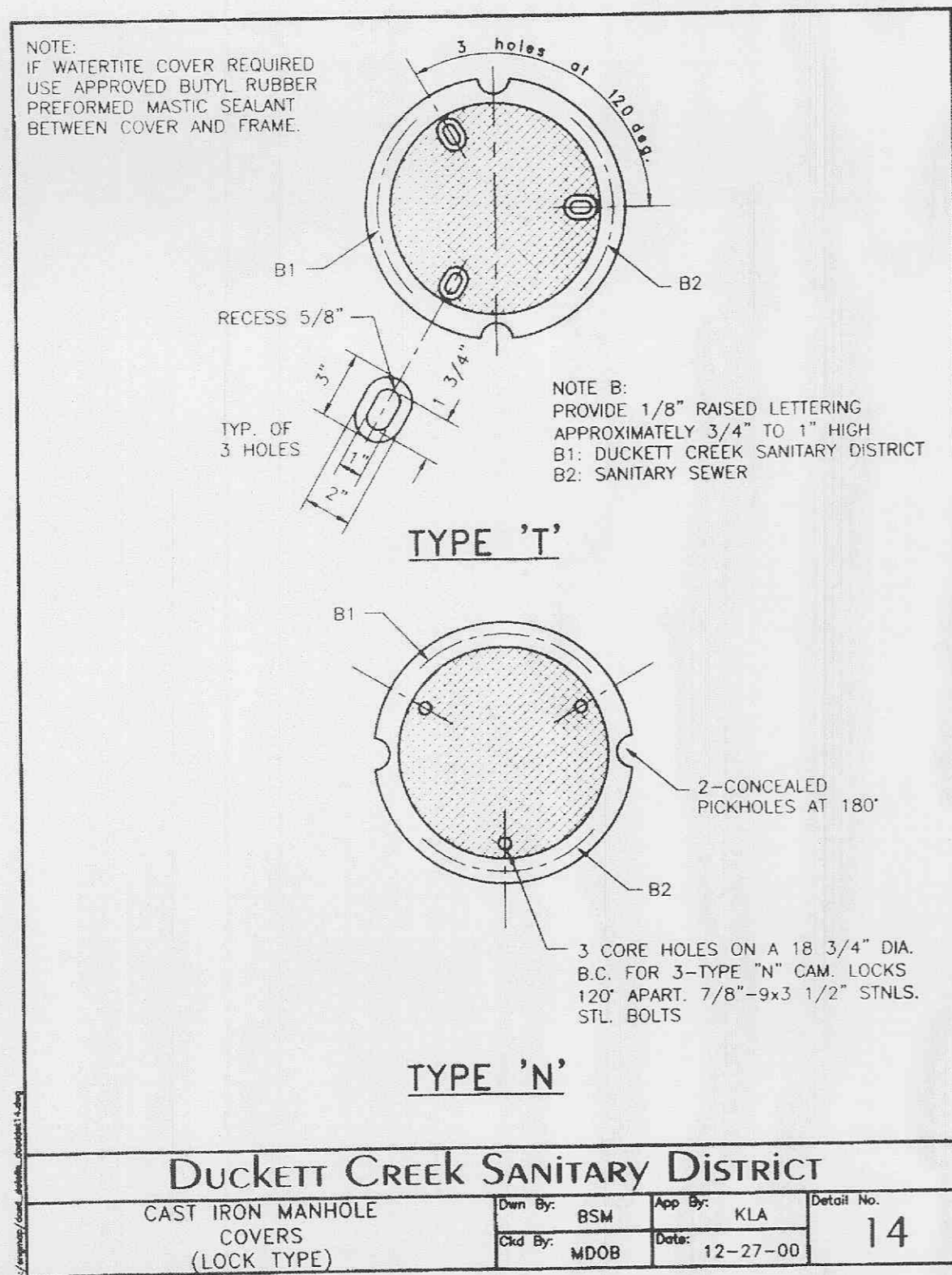
HORIZONTAL SCALE: 1"=30'
VERTICAL SCALE: 1"=10'

MATCH LINE STA. 19+50.00



SANITARY SEWER PROFILE

HORIZONTAL SCALE: 1"=30'
VERTICAL SCALE: 1"=10'



LINETYPE LEGEND

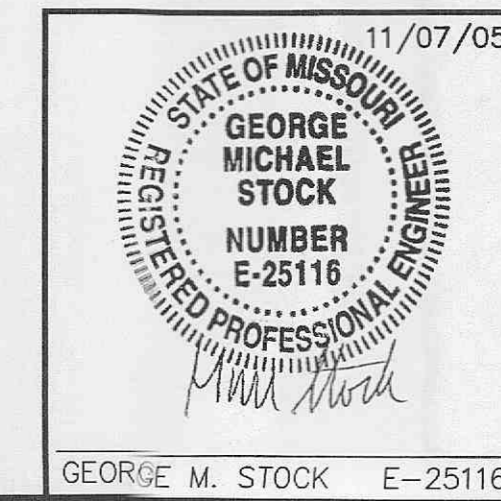
- EXISTING GRADE.....
- PROPOSED GRADE.....
- HYDRAULIC GRADE.....
- PROPOSED PAVEMENT.....
- GRANULAR BACKFILL.....
- COMPACTED FILL.....

- 11/07/05 LOT C DRIVE, AMEREN
- 10/07/05 REVISED SIDEWALK
- 9/26/05 WATER DISTRICT COMMENTS
- 9/12/05 ARCHITECT COMMENTS
- 8/03/05 COORDINATION
- 7/19/05 REVISED PER DUCKETT CREEK'S COMMENTS DATED 7/19/05
- 7/13/05 REVISED PER DUCKETT CREEK'S COMMENTS DATED 7/9/05
- 6/27/05 REVISED PER CITY OF FALLON'S COMMENTS 5/22/05 & DUCKETT CREEK'S COMMENTS DATED 6/15/05
- 5/31/05 REVISED PER DUCKETT CREEK'S MARK-UP PLAN (ADD MH, REV. ALIGNMENT)
- 5/11/05 REVISED BANK'S DRIVEWAY FOR STACKING REQUIREMENT
- 5/5/05 REVISED PER CITY COMMENT LETTER DATED 4-6-05, DUCKETT CREEK COMMENTS (ALIGNMENT), MODOT(4-8-05)
- 3/17/05 REVISED PER CITY COMMENT LETTER DATED 2-24-05, PWSG NO. 2 (2-14-05), DUCKETT CREEK (2-15-05)

DETAILS AND SANITARY SEWER PROFILE

THE POINTE AT WINGHAVEN

P&Z NOS: 9831.52.01



STOCK & ASSOCIATES
Consulting Engineers, Inc.

257 Chesterfield Business Parkway
St. Louis, MO 63005
PH. (636) 530-9100
FAX (636) 530-9130
e-mail: general@stockassoc.com
Web: www.stockassoc.com

DRAWN BY: J.P.P. DATE: 2/04/05 CHECKED BY: G.M.S. DATE: 2/04/05 DATE: 2/04/05 JOB NUMBER: 204-3385 SHEET: C8 of 13

SEE SHEET C11 FOR OTHER
DUCKETT CREEK SANITARY
DISTRICT DETAILS