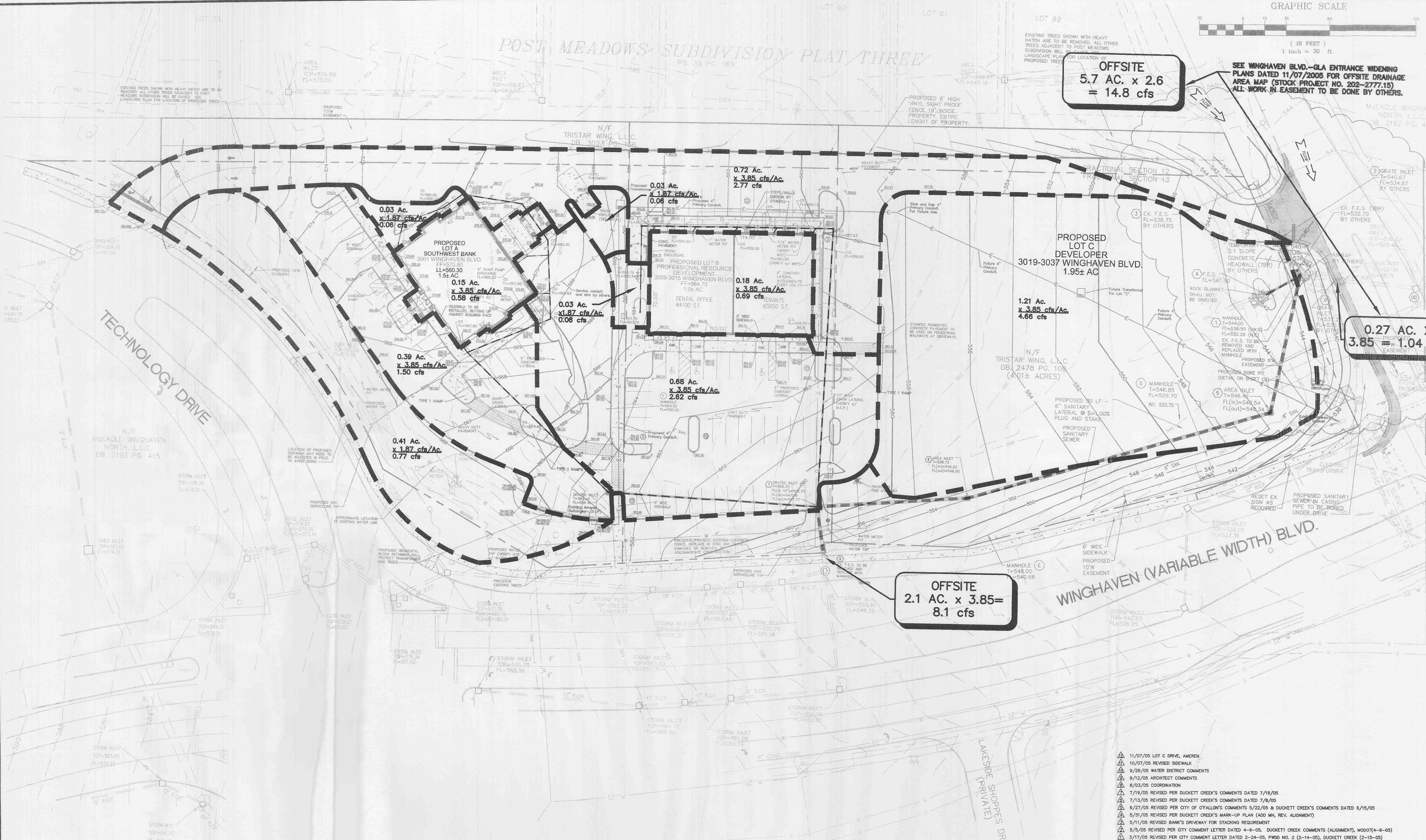


POST MEADOWS SUBDIVISION PLAT THREE



OFFSITE
5.7 AC. x 2.6
= 14.8 cfs

0.27 AC. X
3.85 = 1.04 cfs

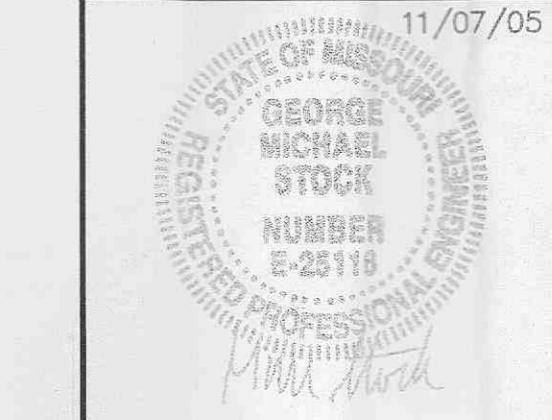
OFFSITE
2.1 AC. x 3.85=
8.1 cfs

SEE WINGHAVEN BLVD.-GLA ENTRANCE WIDENING PLANS DATED 11/07/2005 FOR OFFSITE DRAINAGE AREA MAP (STOCK PROJECT NO. 202-277715) ALL WORK IN EASEMENT TO BE DONE BY OTHERS.

- ▲ 11/07/05 LOT C DRIVE, AMEREN
- ▲ 10/07/05 REVISED SIDEWALK
- ▲ 9/26/05 WATER DISTRICT COMMENTS
- ▲ 9/12/05 ARCHITECT COMMENTS
- ▲ 9/03/05 COORDINATION
- ▲ 7/19/05 REVISED PER DUCKETT CREEK'S COMMENTS DATED 7/19/05
- ▲ 7/13/05 REVISED PER DUCKETT CREEK'S COMMENTS DATED 7/13/05
- ▲ 6/27/05 REVISED PER CITY OF O'FALLON'S COMMENTS 5/22/05 & DUCKETT CREEK'S COMMENTS DATED 6/15/05
- ▲ 5/31/05 REVISED PER DUCKETT CREEK'S MARK-UP PLAN (ADD MH, REV. ALIGNMENT)
- ▲ 5/11/05 REVISED BANK'S DRIVEWAY FOR STACKING REQUIREMENT
- ▲ 5/5/05 REVISED PER CITY COMMENT LETTER DATED 4-6-05, DUCKETT CREEK COMMENTS (ALIGNMENT), MODOT(4-8-05)
- ▲ 3/17/05 REVISED PER CITY COMMENT LETTER DATED 2-24-05, PWSO NO. 2 (2-14-05), DUCKETT CREEK (2-15-05)

DRAINAGE AREA MAP THE POINTE AT WINGHAVEN

P&Z NOS: 9831.52.01



STOCK & ASSOCIATES
Consulting Engineers, Inc.

257 Chesterfield Business Parkway
St. Louis, MO 63005
PH. (636) 530-9100
FAX (636) 530-9130
e-mail: general@stockassoc.com
Web: www.stockassoc.com

DRAINAGE AREA MAP ONLY NOT FOR CONSTRUCTION !

C:\DRAW\3300\2043385\PLANS\C12-DAM.dwg, 11/7/2005, 10:40:10 AM, KIP 9900.pcl