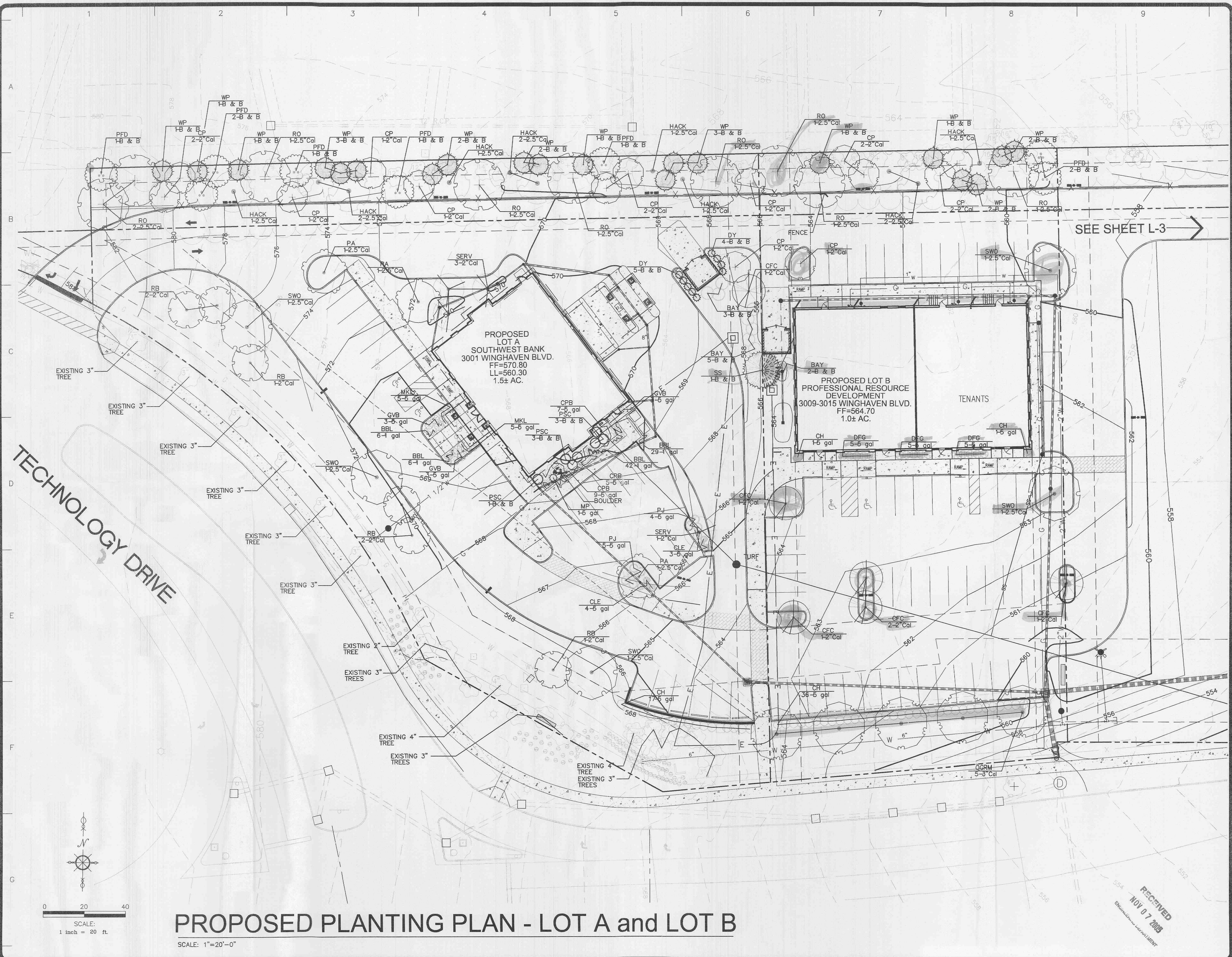


REVISIONS	BY
APRIL 12, 2005	RWM
JULY 1, 2005	RWM
OCTOBER 14, 2005	RWM

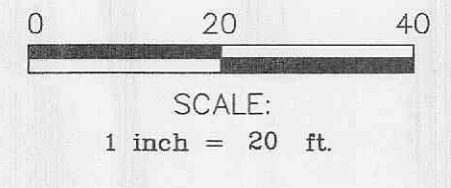
**landscape**  
**TECHNOLOGIES**  
67 Jacobs Creek Drive  
St. Charles, Missouri 63304  
(636) 928-1260  
Fax: (636) 928-1564

PLANTING PLAN FOR THE PROPOSED  
**The Pointe at Winghaven**  
WINGHAVEN, MO

DRAWN	R. MARJIS
CHECKED	RWM
DATE	APRIL 6, 2005
SCALE	1"=20'
JOB No.	2005-150
SHEET	L-1
OF	THREE SHEETS



**PROPOSED PLANTING PLAN - LOT A and LOT B**  
SCALE: 1"=20'-0"



SEE SHEET L-3 →

RECEIVED  
NOV 07 2005  
ENGINEERING DEPARTMENT

C:\DRAWING\30020433851\landscape\Tech\2005-10-14\POINTWING.DWG, 10/14/2005 11:01:24 AM, KP 6054.pcl