

REVISIONS	BY
APRIL 12, 2005	RWM
JULY 1, 2005	RWM
OCTOBER 14, 2005	RWM

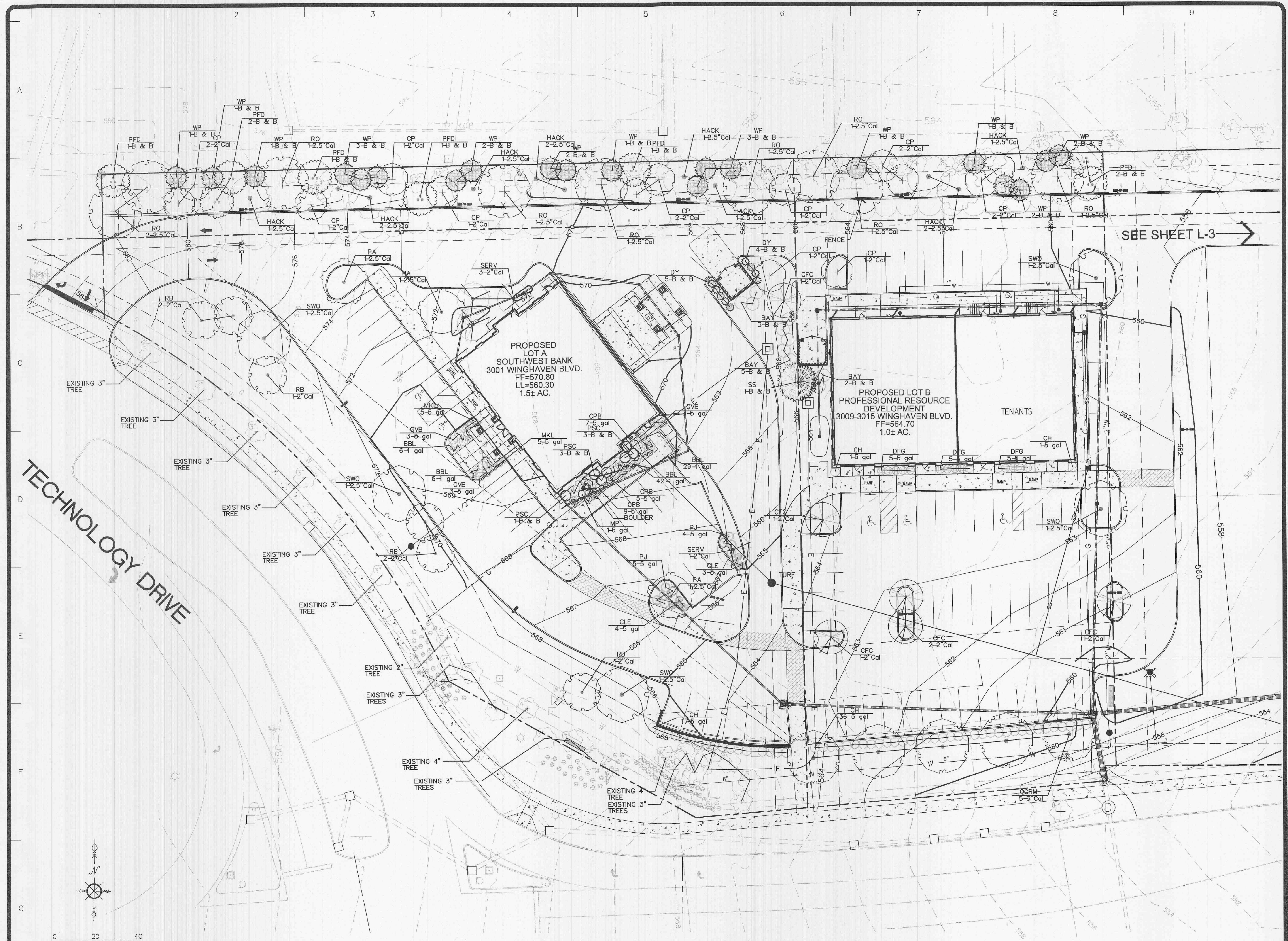
**landscape**  
**TECHNOLOGIES**

(630) 928-1250  
67 Jacobs Creek Drive  
St. Charles, Missouri 63304  
Fax: (636) 928-4954

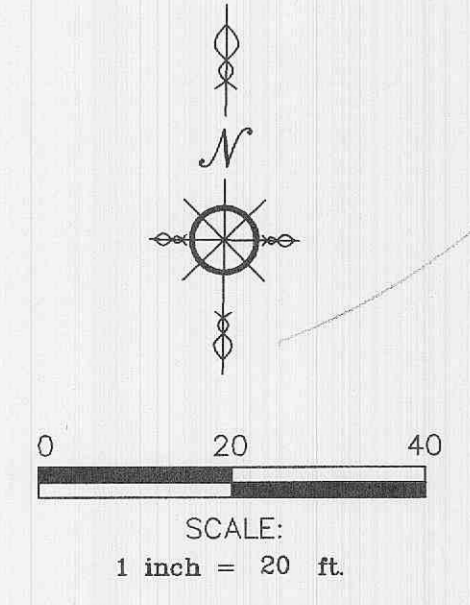
RECEIVED  
OCT 11 2005

PLANTING PLAN FOR THE PROPOSED  
**The Pointe at Winghaven**  
 WINGHAVEN, MO

DRAWN  
R. MARIS  
 CHECKED  
RWM  
 DATE  
APRIL 6, 2005  
 SCALE  
1"=20'  
 JOB No.  
2005-150  
 SHEET  
**L-1**  
 OF THREE SHEETS



TECHNOLOGY DRIVE  
 EXISTING 3" TREE  
 EXISTING 3" TREE  
 EXISTING 3" TREE  
 EXISTING 3" TREE  
 EXISTING 3" TREE  
 EXISTING 2" TREE  
 EXISTING 3" TREES  
 EXISTING 4" TREE  
 EXISTING 3" TREES  
 EXISTING 4 TREE  
 EXISTING 3" TREES



**PROPOSED PLANTING PLAN - LOT A and LOT B**  
 SCALE: 1"=20'-0"

SEE SHEET L-3 →