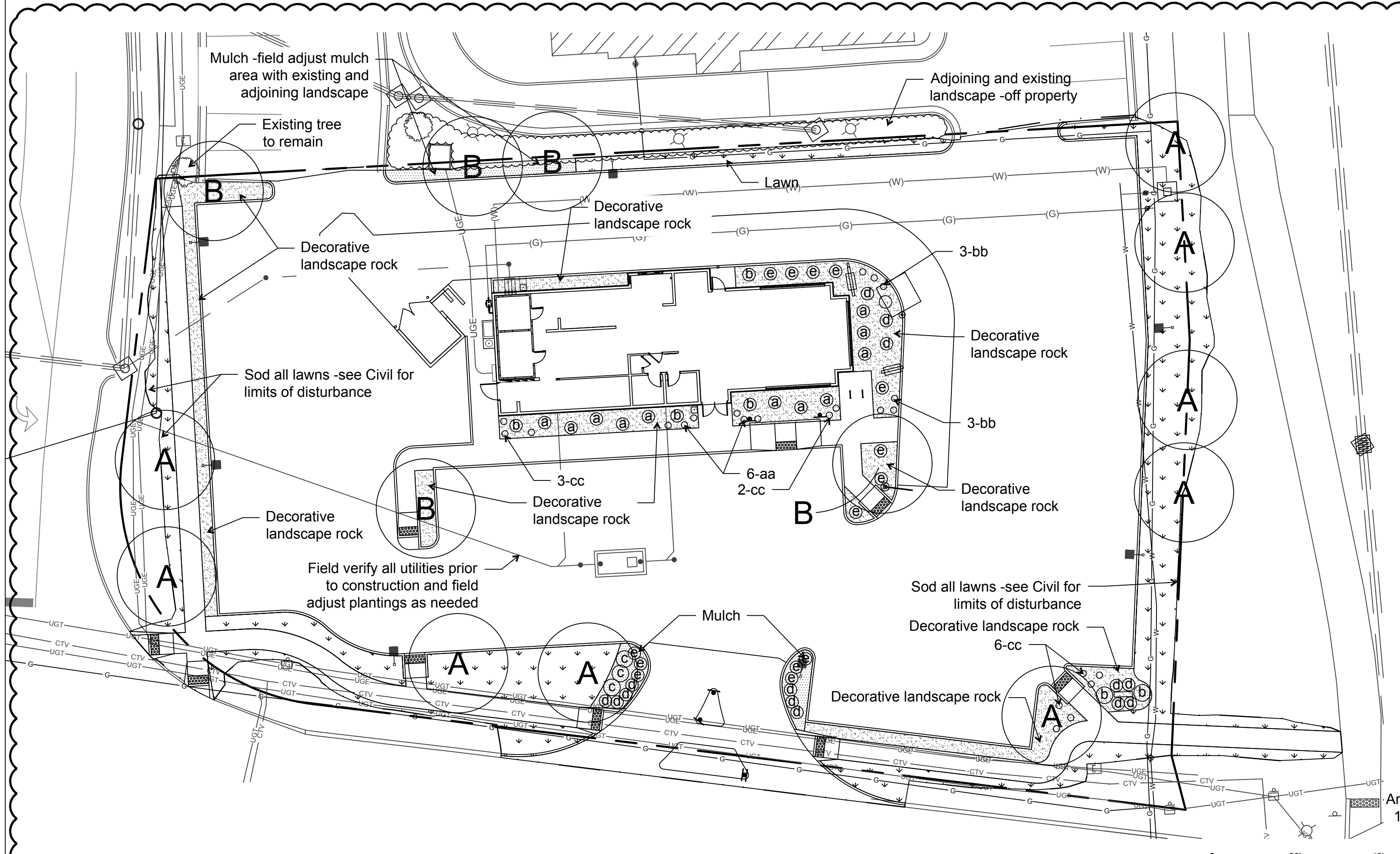


**City of O'Fallon, Missouri landscape requirements**  
**Article IV. Minimum Tree Quantities and Location Requirements**  
**Section 402.090. Commercial Zoning Districts**  
 One (1) tree required for every forty (40) of street frontage.  
 167 lin. ft. street frontage at Highway K  
 193 lin. ft. street frontage at Keaton Corporate Parkway  
 105 lin. ft. street frontage at Keaton Crossing Blvd.  
 465 lin. ft. street frontage divided by forty (40) equals 11.6 or 12 trees  
 One (1) tree required for every three thousand (3,000) sq. ft. landscape  
 5,856 sq. ft. landscape area divided by 3,000 sq. ft. equals 2 trees  
 Fourteen (14) trees required  
**Article V. Landscape and Screening Requirements**  
**Section 402.170**  
 A. See plan for information provided  
 B. Planting Requirements within parking and vehicle use areas  
 1  
 2.a Interior parking landscape area  
 43 stalls multiplied by 270 equals 11,610 sq. ft.  
 11,610 sq. ft. multiplied by .06 equals 696.6 sq. ft. of required interior parking area  
 Interior parking area provided: 750 sq. ft.  
 C. Planting Requirements.  
 see plan for proposed plant size  
**Section 402.180. Standards For Buffer Yard Areas Between Non-Residential and Residential Land Uses and Zoning Districts.**  
 No buffer required -lot does not adjoin residential property

1 Landscape Zoning Diagram

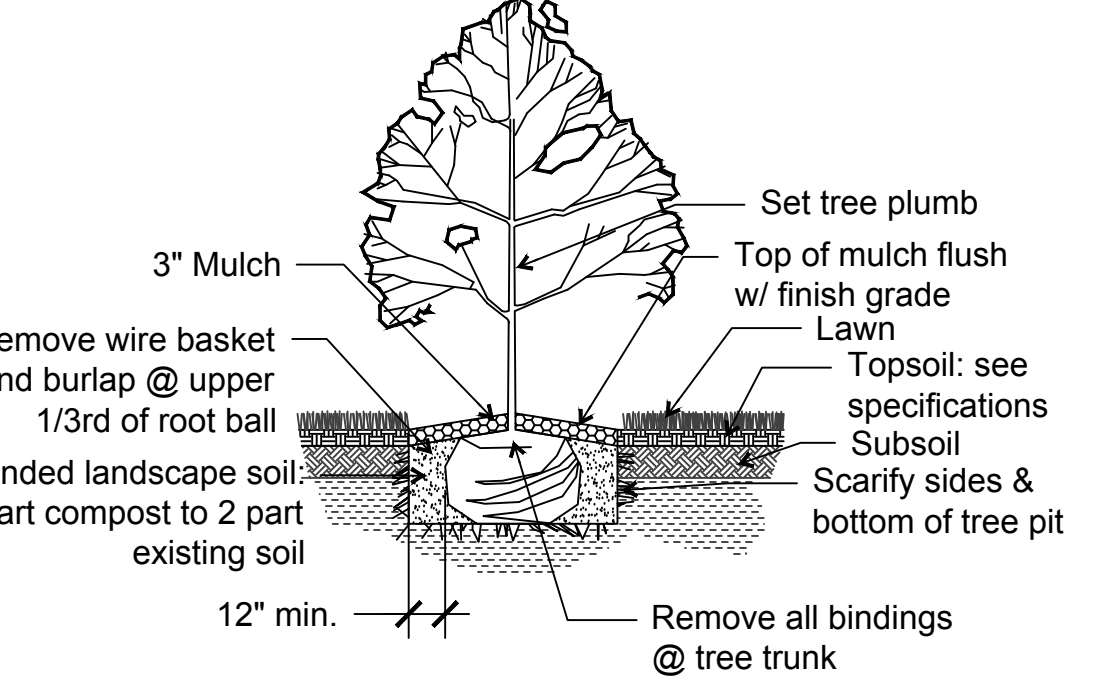


2 Landscape Planting Plan

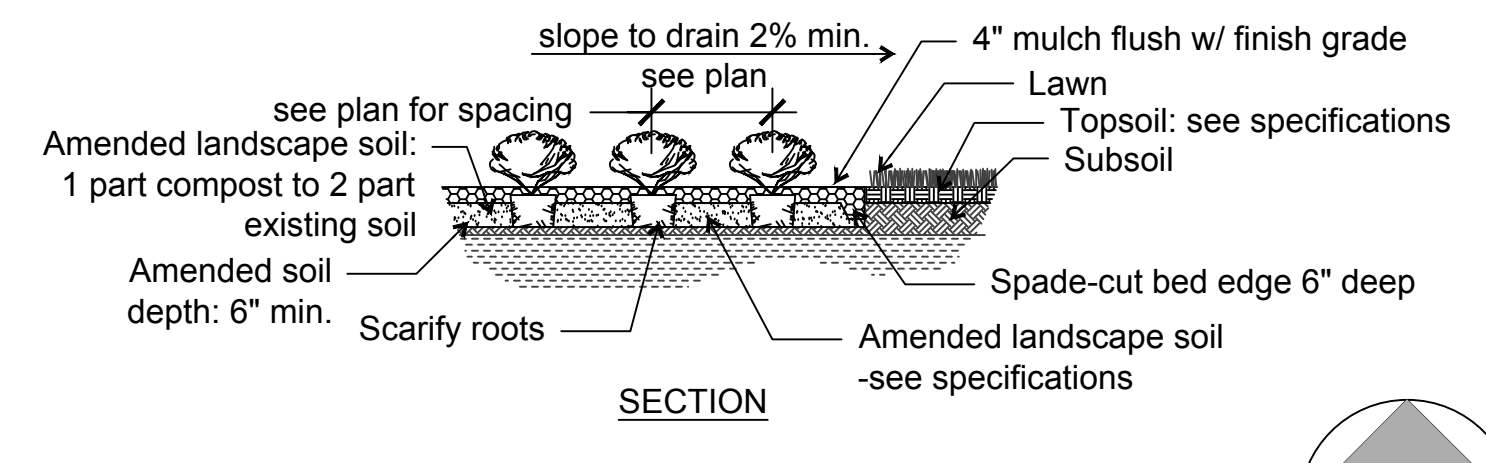
Landscape Planting Schedule						
Key	Qty.	Common Name	Botanical Name	Size	Comment	Mature plant height
A	9	Sugar Maple	Acer saccharum 'Green Mountain'	2" Cal.	clear 4'-6"	60-75'
B	5	Honey Locust	Gleditsia triacanthos 'skycolor'	2" Cal.	clear 4'-6"	40-45'
a	11	Barberry	Berberis thunbergii 'Rose Glow'	5 Gal.	18-24"	hedge to 36"
b	6	Upright Juniper	Juniperus communis 'Gold Cone'	5 Gal.	18-24" tall	hedge to 36"
c	3	Gold Tip Juniper	J. chinensis x pfitzeriana 'Gold Tip'	5 Gal.	18-24"	hedge to 24"
d	14	Red Drift Rose	Rosa 'Meigalpio'	3 Gal.	18-24"	hedge to 24"
e	14	Prairie Drop Seed	Sporobolus heterolepis	1 Gal.		24-48"
aa	6	Variegated Liriope	Liriope muscari 'Variegated'	1 Gal.		12-18"
bb	6	Purple Cone Flower	Echinacea purpurea 'Kim's Knee High'	1 Gal.		18-24"
cc	11	Black Eyed Susan	Rudbeckia fulgida 'fulgida'	1 Gal.		24-36"
4,150 +/- Sq. Ft. Sod -provide 6" top soil					See specification	
375 +/- Sq. Ft. Mulch with amended soils					See specification	
2,200 +/- Sq. Ft. 3" Decorative landscape rock: size 1" - 1 1/2" Color: brown & tan river pebble, naturally rounded w/ 8 oz non-woven					See specification	

- GENERAL NOTES:**
- Landscape quantities shown for reference and bid comparison only, contractor to furnish and install plant quantities shown on plan. Notify Owner/ Landscape Architect of any discrepancies.
  - CONTRACTOR SHALL WATER ALL LANDSCAPE PLANTINGS FOR ONE (1) YEAR AFTER INITIAL ACCEPTANCE.
  - SOD SHALL BE WATERED AND MAINTAINED DURING CONSTRUCTION AND UNTIL FINAL ACCEPTANCE.
  - Contractor to review and field verify existing and proposed conditions prior to
  - Contractor to coordinate and cooperate with other trades.
  - Contractor to adjust plantings as field directed by owner and or as unforeseen field conditions require. All field changes to be documented and provided to

- owner prior to initial acceptance.
- No trees shall be planted within ten (10) foot of private or public utilities unless approved by owner.
- Proposed plant material to be approved by owner/ landscape architect -see specifications.
- Contractor is responsible for installing all plant material, sod, topsoil and mulch as shown on plan and in specifications.
- Plan(s) do not constitute contractor means and methods. Job site safety and project coordination is responsibility of contractor(s).
- See all specifications for full requirements.



SHADE TREE PLANTING DETAIL



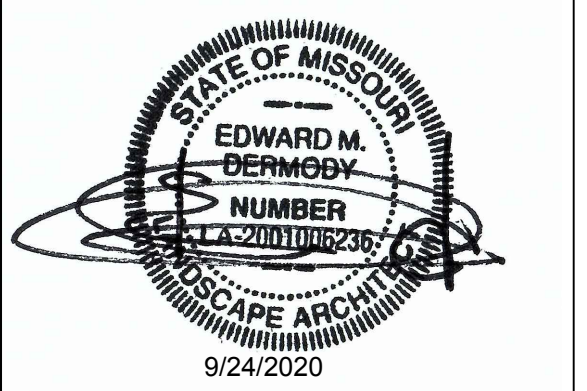
SHRUB/ PERENNIAL PLANTING DETAIL

**DERMODY & ASSOCIATES**  
*Uisce beatha*  
  
**LANDSCAPE ARCHITECTS**  
 p h # 3 1 4 . 2 0 5 . 8 8 7 1  
 Missouri Certificate of Authority  
 # 2 0 0 9 0 2 0 2 0 8  
**Consultants:**

Landscape Development Plan for:  
 Popeyes L.K.  
 Highway K and Keaton Corporate Parkway  
 O'Fallon, MO  
 Drawing prepared for:  
 The Clayton Engineering Company  
 2288 Welsch Rd.  
 St. Louis, MO 63145

**Revisions:**

No.	Description	Date:
1	New Light Locations	6/8/2020
2	Building Proper Landscape	9/24/2020



This drawing and the details on it are the sole property of the landscape architect and may be used for this specific project only. It shall not be loaned, copied or reproduced, in whole or in part, or for any other purpose or project without the written consent of the Landscape Architect.  
 Copyright © by Dermody & Associates, LLC

Issue Date: 4/24/2020  
 Drawn by: EMD  
 Checked By: EMD  
 Sheet Title

**Planting Plan**

Project Number: 713.021