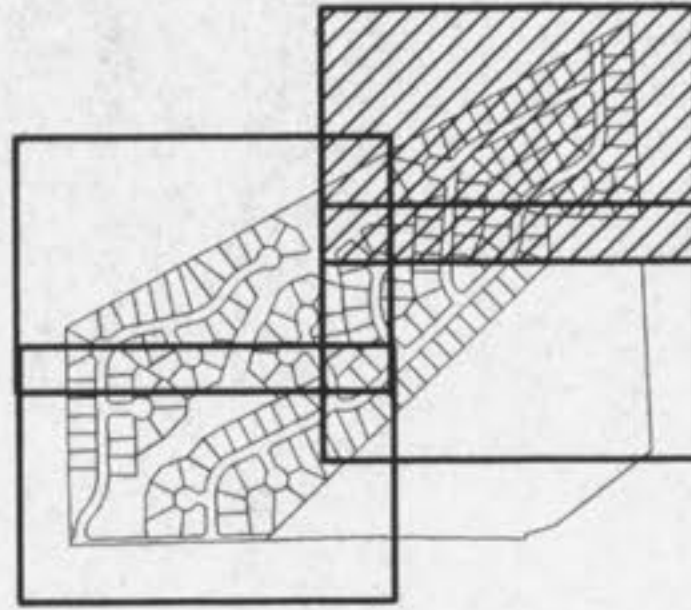
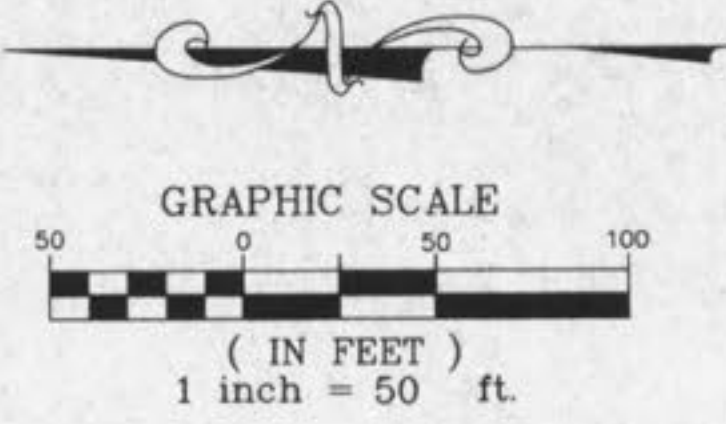
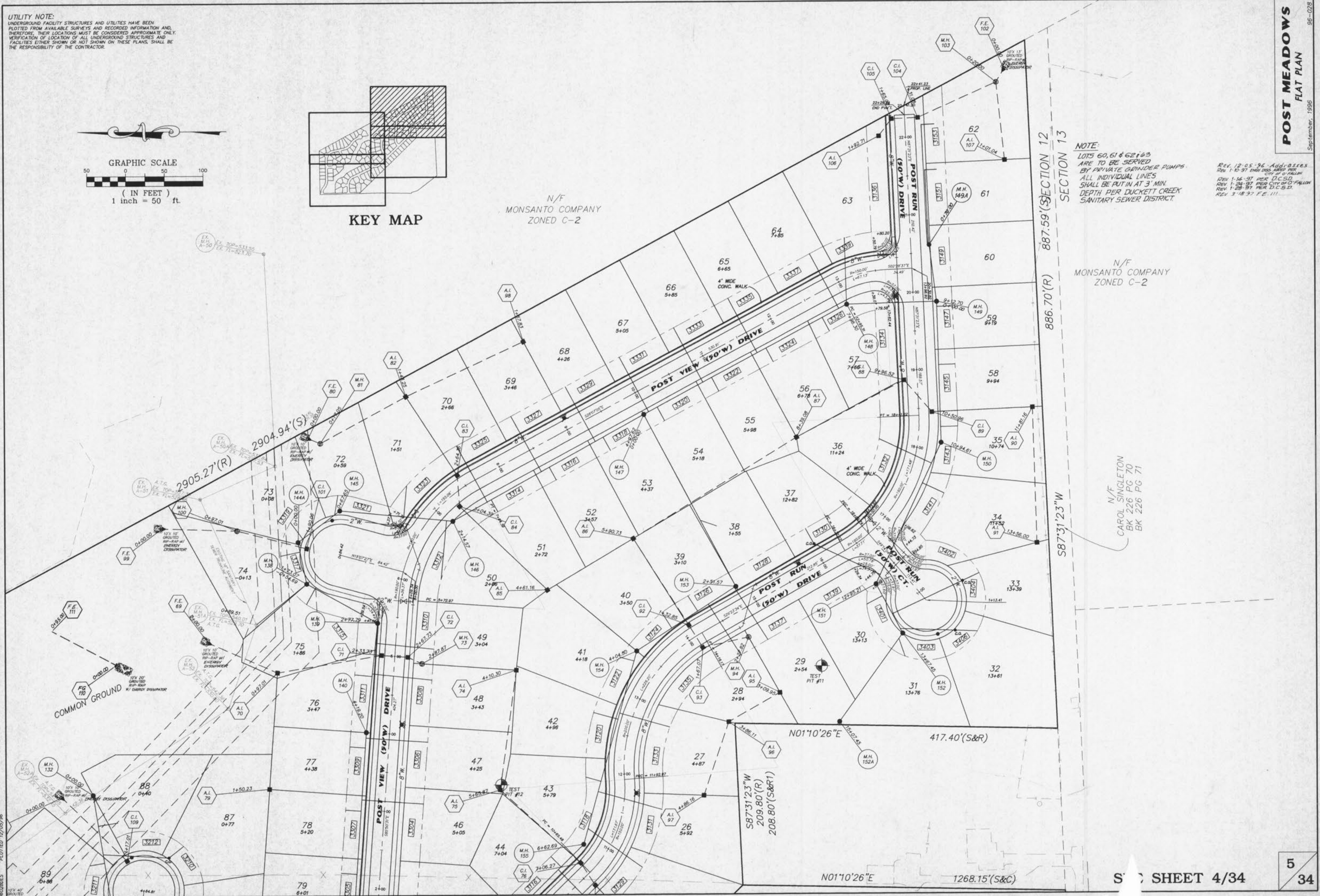


UTILITY NOTE:
 UNDERGROUND FACILITY STRUCTURES AND UTILITIES HAVE BEEN PLOTTED FROM AVAILABLE SURVEYS AND RECORDED INFORMATION AND, THEREFORE, THEIR LOCATIONS MUST BE CONSIDERED APPROXIMATE ONLY. VERIFICATION OF LOCATION OF ALL UNDERGROUND STRUCTURES AND FACILITIES EITHER SHOWN OR NOT SHOWN ON THESE PLANS, SHALL BE THE RESPONSIBILITY OF THE CONTRACTOR.



KEY MAP

N/F
 MONSANTO COMPANY
 ZONED C-2



NOTE:
 LOTS 60, 61 & 62 ARE TO BE SERVED BY PRIVATE GRINDER PUMPS. ALL INDIVIDUAL LINES SHALL BE PUT IN AT 3' MIN. DEPTH PER DUCKETT CREEK SANITARY SEWER DISTRICT.

REV. 12-05-96 - Addresses
 REV. 1-15-97 - END 200' ASSESSMENT
 REV. 1-16-97 - PER D.C.S.D.
 REV. 1-28-97 - PER CITY OF FALLON
 REV. 1-28-97 - PER D.C.S.D.
 REV. 3-18-97 - F.E. 111

N/F
 MONSANTO COMPANY
 ZONED C-2

N/F
 CAROL SINGLETON
 BK 226 PG 70
 BK 226 PG 71

SEE SHEET 3/34

96028065 PLOTTED 12/05/96

SHEET 4/34

5
 34

POST MEADOWS
 FLAT PLAN
 September, 1996
 96-028