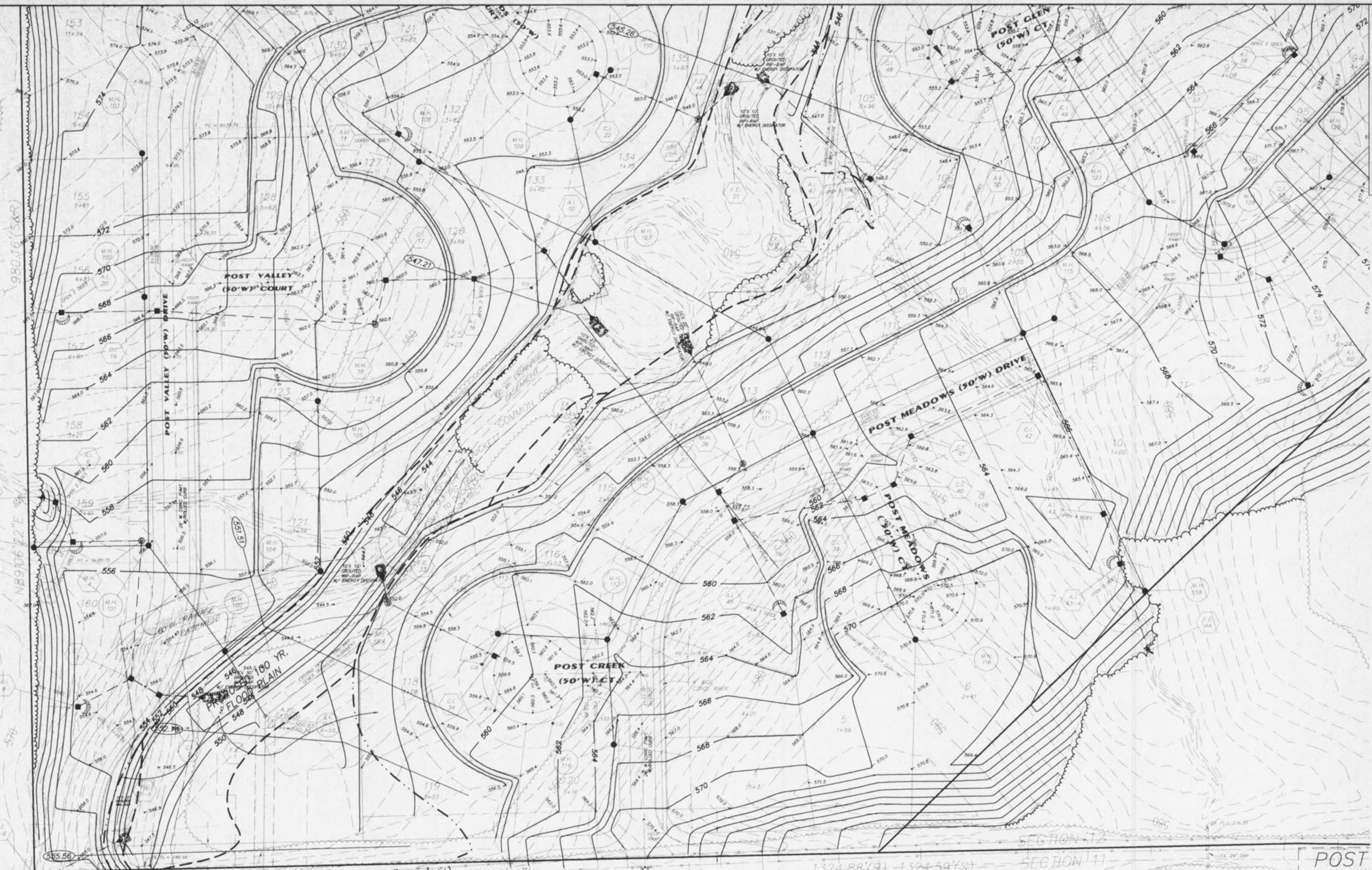


SEE SHEET 7/34

POST MEADOWS
GRADING PLAN
September, 1996
96-028

SEE SHEET 8/34



MONSANTO COMPANY
BK 956 PG 821
ZONED R-1A

MONSANTO COMPANY
BK 956 PG 821
ZONED R-1A

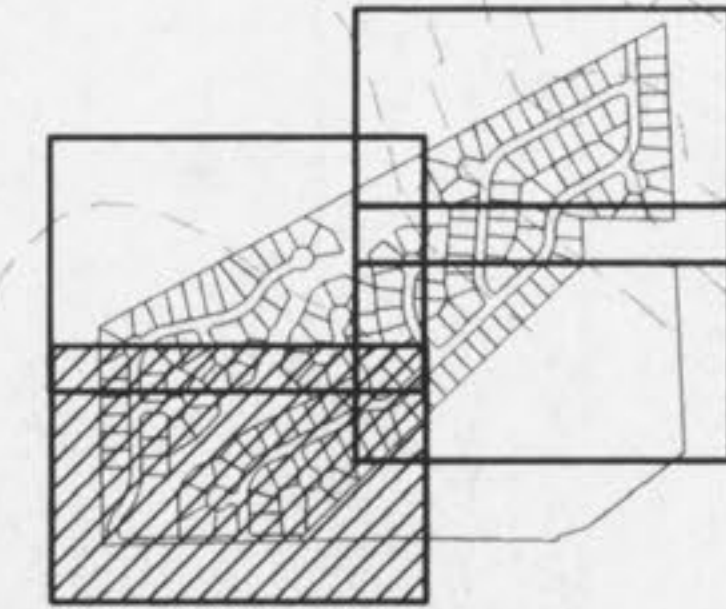
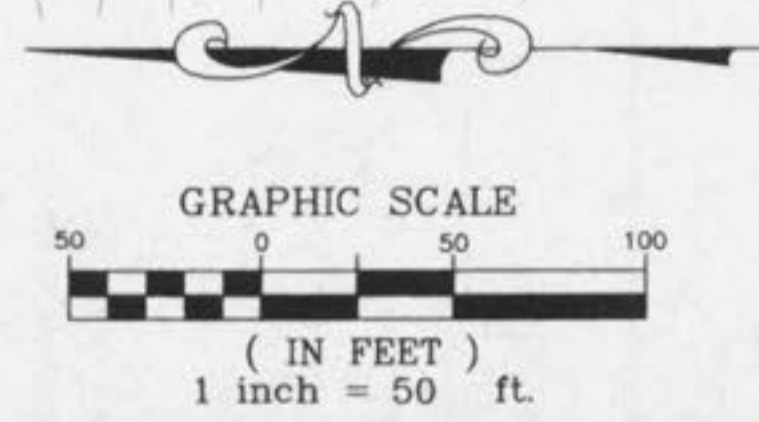
STRUNK
BK 1319 PG 979
ZONED A-2

POST ROAD (30' W)
CORB 3 PG 450
(AS TRAVELED)

25' WIDE STRIP TO BE DEDICATED ON THE RECORD PLAT

W/A
NEMSAITH
BK 924 PG 1515
ZONED A-2

NOTE: THE EXISTING SANITARY SEWER EASEMENT, RECORDED IN BOOK 1783, PAGE 1601, WILL BE VACATED BY A SEPARATE INSTRUMENT. A NEW, RELOCATED EASEMENT WILL BE SHOWN ON THE SUBDIVISION RECORD PLAT, TO ENCOMPASS THE NEW, RELOCATED SEWER TRUNK LINE THAT IS SHOWN HEREON. THE NEW SEWER LINE AND EASEMENT WILL BE TOWARD THE REAR OF THE LOTS, AND WILL NOT INHIBIT THE CONSTRUCTION OF THE HOUSES.



KEY MAP

POST
CCRB
(AS

96028025 PLOTTED 01/13/97

UTILITY NOTE:
UNDERGROUND FACILITY STRUCTURES AND UTILITIES HAVE BEEN PLOTTED FROM AVAILABLE SURVEYS AND RECORDED INFORMATION AND, THEREFORE, THEIR LOCATIONS MUST BE CONSIDERED APPROXIMATE ONLY. VERIFICATION OF LOCATION OF ALL UNDERGROUND STRUCTURES AND FACILITIES EITHER SHOWN OR NOT SHOWN ON THESE PLANS, SHALL BE THE RESPONSIBILITY OF THE CONTRACTOR.

REV. 02/12/97 PER D.C.S.D.
REV. 01/13/97 PER CITY OF DYALON