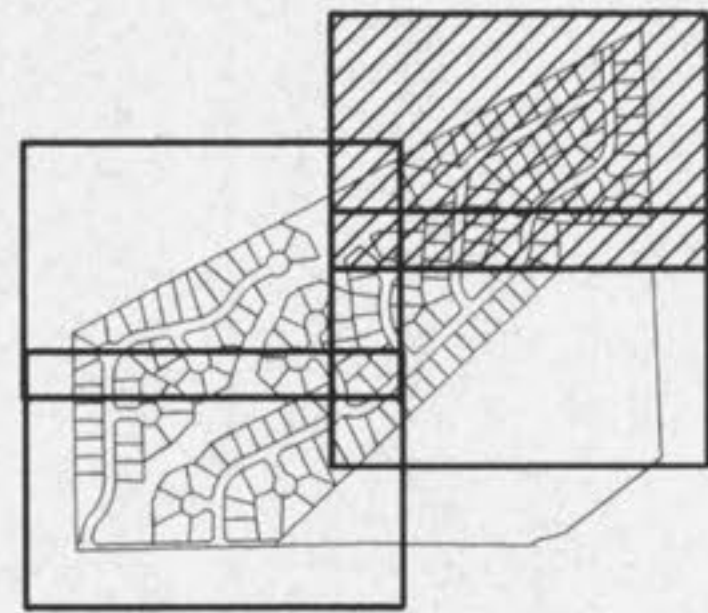
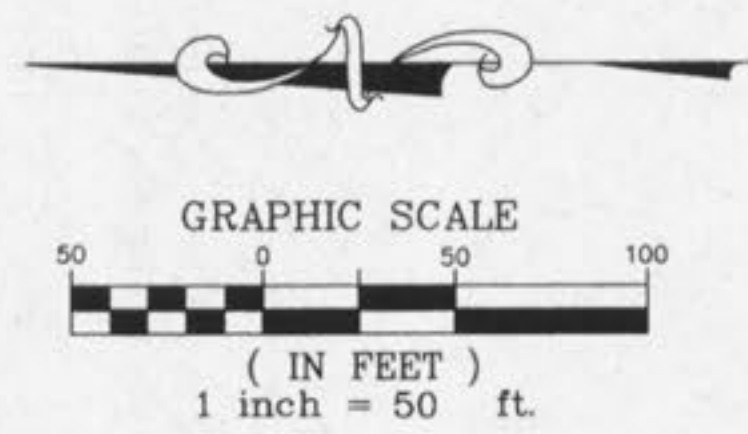


UTILITY NOTE:
 UNDERGROUND FACILITY STRUCTURES AND UTILITIES HAVE BEEN PLOTTED FROM AVAILABLE SURVEYS AND RECORDED INFORMATION AND, THEREFORE, THEIR LOCATIONS MUST BE CONSIDERED APPROXIMATE ONLY. VERIFICATION OF LOCATION OF ALL UNDERGROUND STRUCTURES AND FACILITIES EITHER SHOWN OR NOT SHOWN ON THESE PLANS, SHALL BE THE RESPONSIBILITY OF THE CONTRACTOR.



KEY MAP



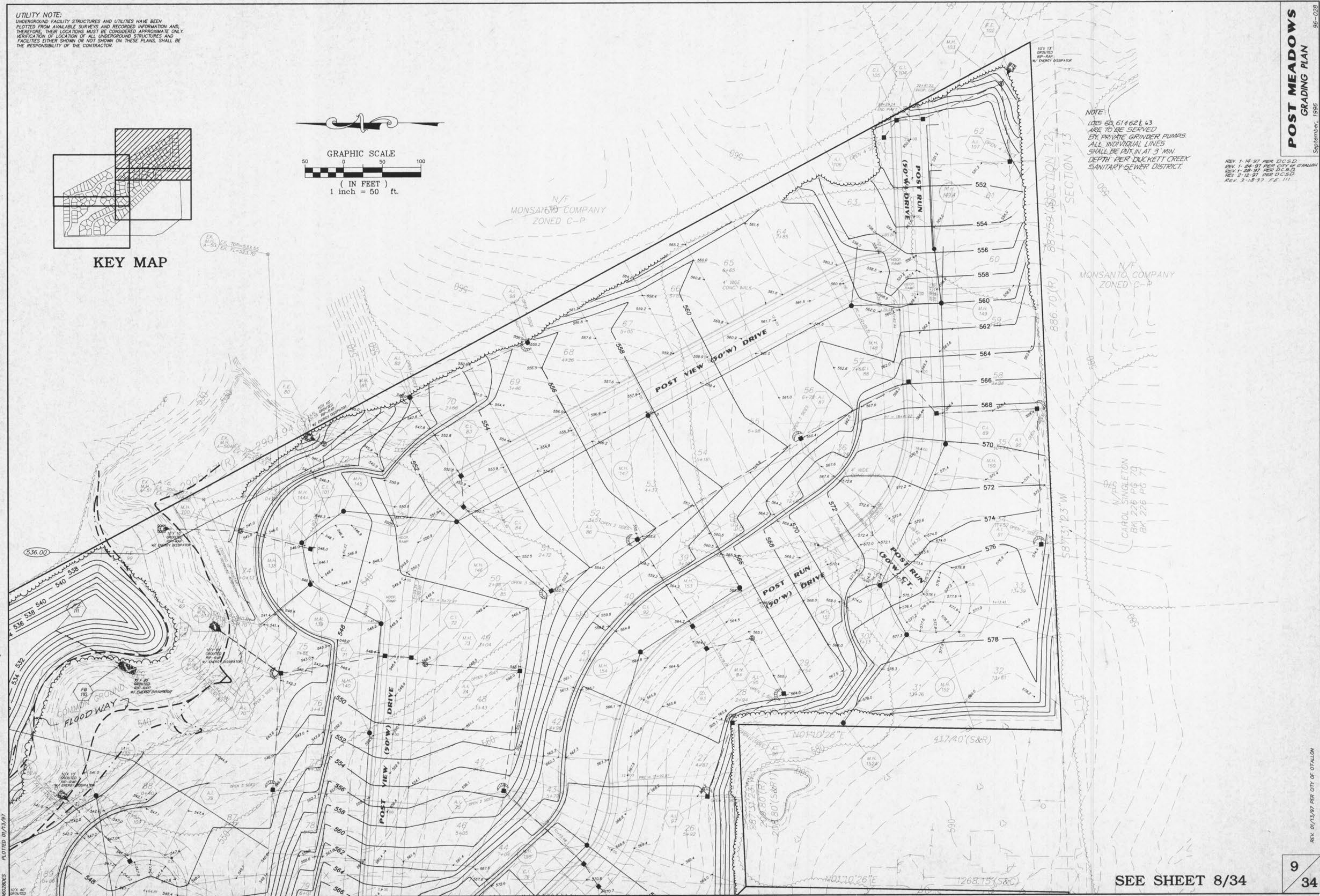
N/F
 MONSANTO COMPANY
 ZONED C-P

NOTE:
 LOTS 62, 61 & 62 L 63
 ARE TO BE SERVED
 BY PRIVATE GRINDER PUMPS.
 ALL INDIVIDUAL LINES
 SHALL BE PUT IN AT 3' MIN.
 DEPTH PER DUCKETT CREEK
 SANITARY SEWER DISTRICT.

REV 1-14-97 PER D.C.S.D.
 REV 1-24-97 PER CITY OF OTTAWA
 REV 1-28-97 PER D.C.S.D.
 REV 2-12-97 PER D.C.S.D.
 REV 3-18-97 P.E. III

POST MEADOWS
 GRADING PLAN
 September, 1996
 96-028

SEE SHEET 7/34



SEE SHEET 8/34

9
 34

6/20/96 PLOTTED 01/13/97

REV. 01/13/97 PER CITY OF OTTAWA