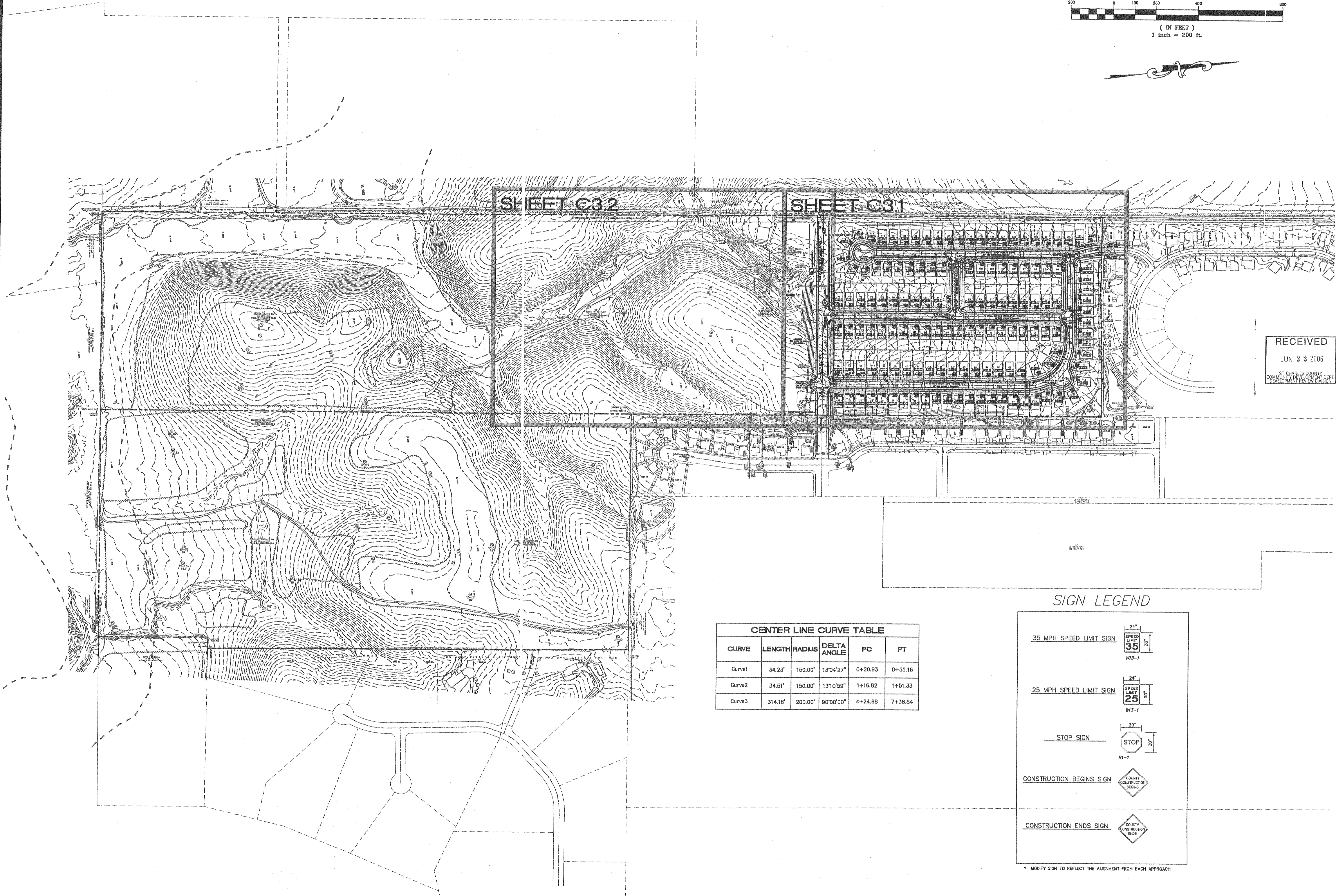
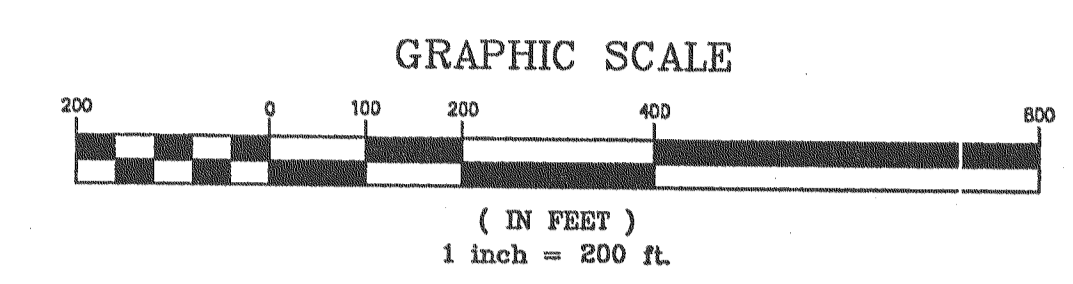


USER: Menlight TAB: C3.0
 DATE: 2/2/06 12:27pm
 DRAWING: ST. CHARLES COUNTY (05-340) PHASE I IMPROVEMENT PLANS (05-340) SITE PLAN C3.0



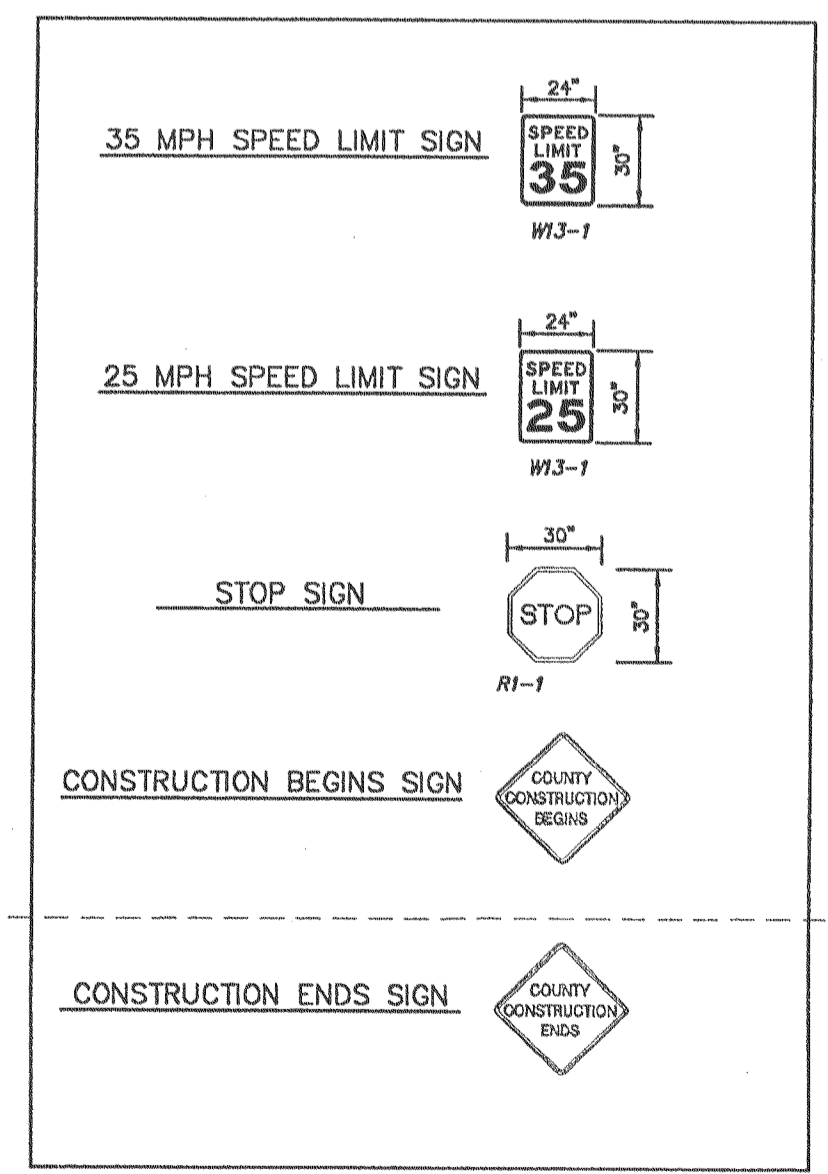
SHEET C3.2

SHEET C3.1

RECEIVED
 JUN 22 2006
 ST. CHARLES COUNTY
 COMMUNITY DEVELOPMENT DEPT.
 DEVELOPMENT REVIEW DIVISION

CENTER LINE CURVE TABLE					
CURVE	LENGTH	RADIUS	DELTA ANGLE	PC	PT
Curve1	34.23'	150.00'	13°04'27"	0+20.93	0+55.16
Curve2	34.51'	150.00'	13°10'59"	1+16.82	1+51.33
Curve3	314.16'	200.00'	90°00'00"	4+24.68	7+38.84

SIGN LEGEND

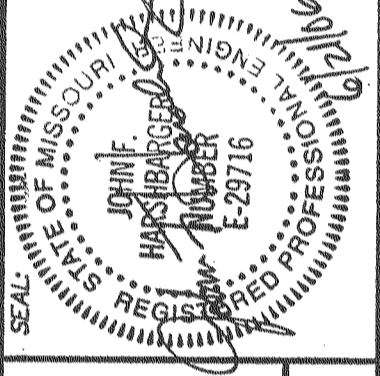


* MODIFY SIGN TO REFLECT THE ALIGNMENT FROM EACH APPROACH

DATE	BY	REVISIONS
4/28/06	A	OWNER/COUNTY COMMENTS
5/19/06	A	ST. CHARLES CO. REVIEW COMMENTS
6/5/06	A	DICKETT CREEK SAN DIST COMMENTS
6/21/06	A	ST. CHARLES COUNTY COMMENTS

DEVELOPER/OWNER:
 THE JONES COMPANY HOMES, L.L.C.
 16640 CHESTERFIELD GROVE, SUITE 160
 CHESTERFIELD, MO 63005
 PHONE: (636) 537-7192

THE PROFESSIONAL, WRITTEN SIGNATURE AND PERSONAL SEAL APPEAR HEREON
 ASSURES THE ACCURACY OF THE INFORMATION AND DATA ON WHICH THIS PLAN
 IS BASED. IT DOES NOT GUARANTEE THE ACCURACY OF THE INFORMATION AND DATA
 PROVIDED BY THE CLIENT. THE PROFESSIONAL ENGINEER OR SURVEYOR IS NOT
 RESPONSIBLE FOR THE ACCURACY OF THE INFORMATION AND DATA PROVIDED BY
 THE CLIENT. THE PROFESSIONAL ENGINEER OR SURVEYOR IS NOT RESPONSIBLE FOR
 THE ACCURACY OF THE INFORMATION AND DATA PROVIDED BY THE CLIENT.



PRESTON WOODS - PHASE I
 IMPROVEMENT PLANS
 RHODES LANE
 ST. CHARLES, MO. 63366
 SITE PLAN INDEX

planning • engineering • surveying • landscape architecture
Gole
 and ASSOCIATES
 INCORPORATED
 10777 sunset office dr. suite 10
 saint louis, mo 63127
 p: 314 984 9887 f: 314 984 0587

DESIGNED BY: JKW
 DRAWN BY: BJ
 CHECKED BY: JFH
 DATE: 2/2/06
 Job Number: 05-340
 Sheet Number: C3.0