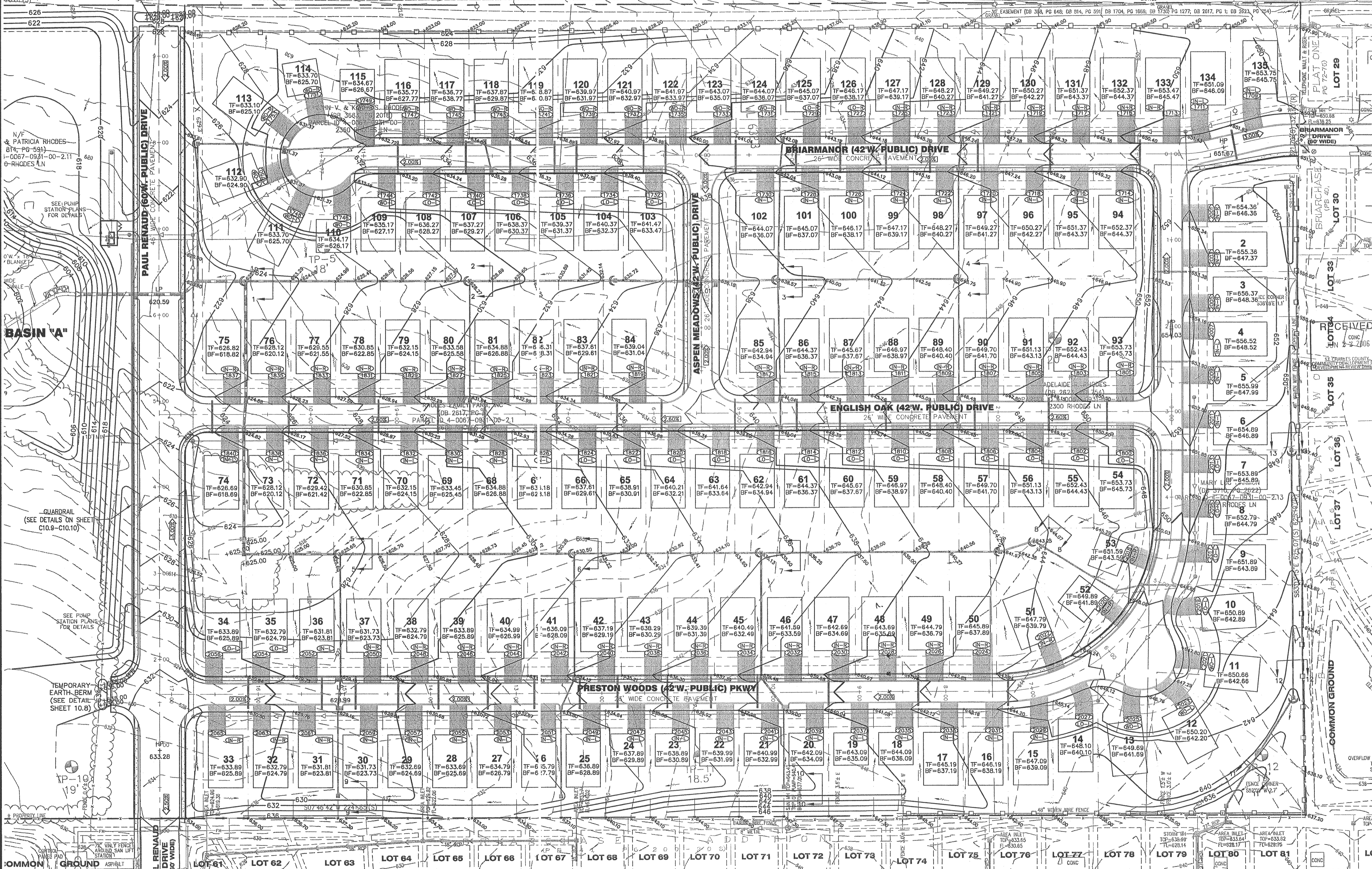


(IN FEET)
1 inch = 50 ft.

JOANEE GRIFFIN & GARY E. KRAEDT REVOCABLE TRUSTS
(DB 2354, PG 72)
PARCEL ID 4-0067-0931-00-3

R. STEPHEN & CATHERINE M. BARNETT
(DB 1874, PG 123)
PARCEL ID 4-0067-0931-00-7.1

TEMPORARY EARTH BERM
(SEE DETAIL SHEET 10.8)

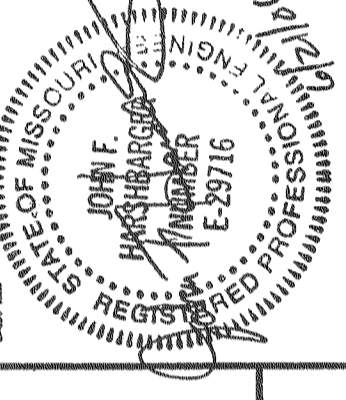


GRADING BASEL ON TEMPLATE PROVIDED BY DEVELOPER AS SHOWN ON SHEET C100

REVISIONS

DATE	DESCRIPTION
4/29/06	OWNER COUNTY COMMENTS
5/15/06	ST. CHARLES CO. REVIEW COMMENTS
6/2/06	PAID FOR REVIEW COMMENTS
6/27/06	COUNTY COMMENTS

DEVELOPER/OWNER:
THE JONES COMPANY HOMES, LLC
16640 CHESTERFIELD GROVE, SUITE 160
CHESTERFIELD, MO 63005
PHONE: (636) 587-7192



PRESTON WOODS - PHASE I
IMPROVEMENT PLANS

RHODES LANE
ST. CHARLES, MO. 63366

GRADING PLAN

planning • engineering • surveying • landscape architecture

COLE
and ASSOCIATES
INCORPORATED

10777 sunset office dr. suite 10
saint louis, missouri 63127
p: 314 984 9887 f: 314 984 0587

DESIGNED BY: JKW
DRAWN BY: BJ
CHECKED BY: JFH
DATE: 2/2/06
Job Number: 05-340
Sheet Number: C4.1

USER: Mjgknt; TAB: C4.1; 12pm
 DRAWING: S:\VABES\050340\05-340\PLANS\IMPROVEMENT PLANS\05-340\PLANS\C4.0\GRADING PLAN.dwg
 DATE: 2/2/06