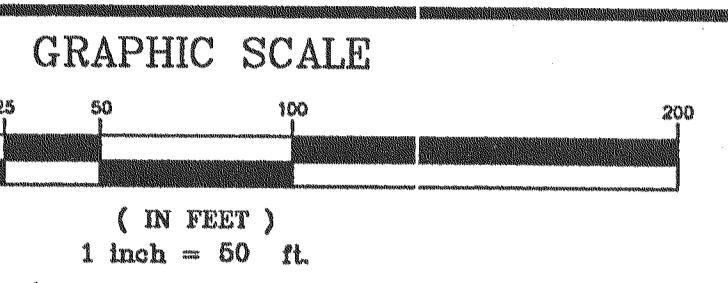
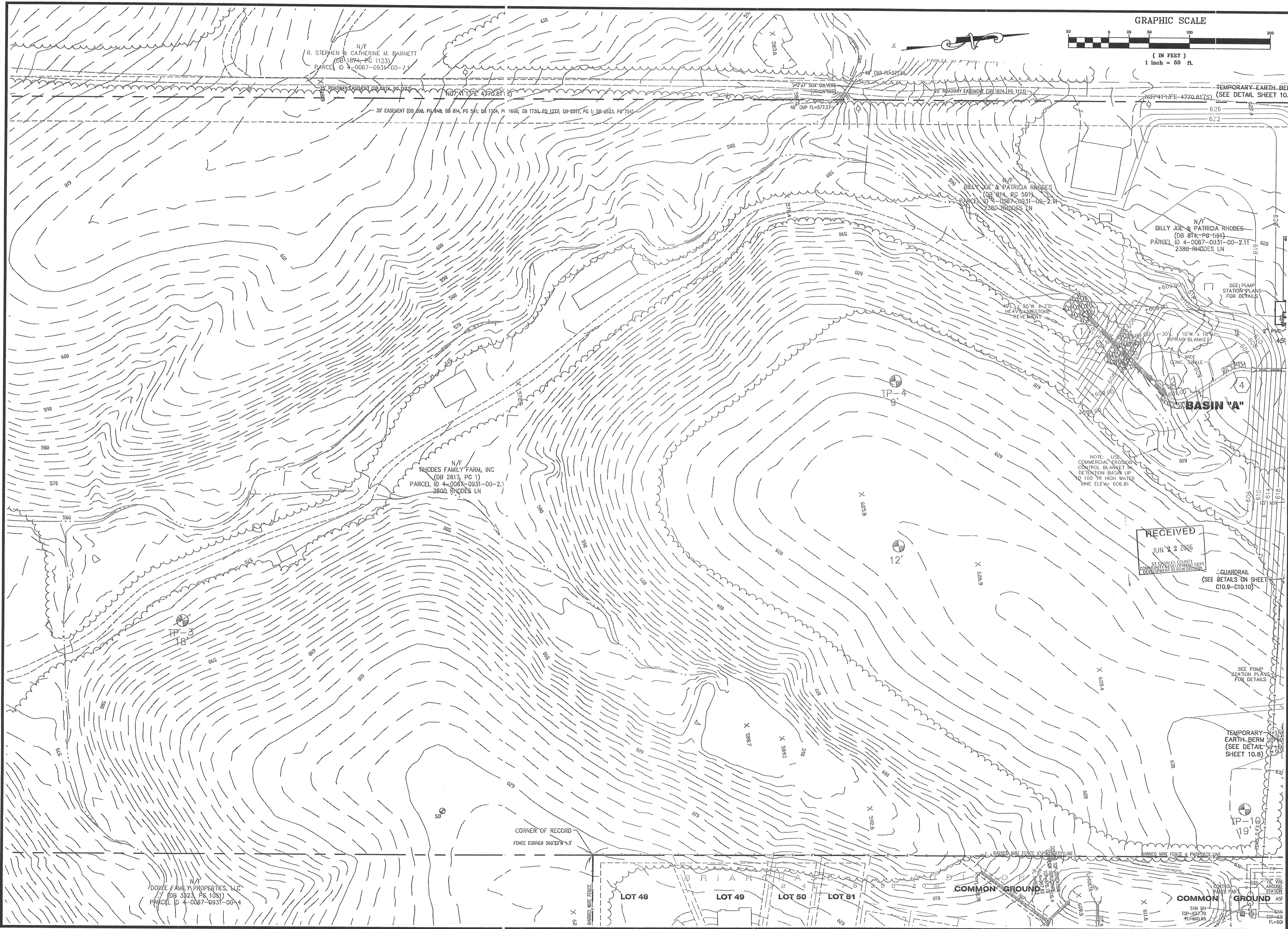


USER: Knight TAB: C5.8
 DATE: Jun 21, 2006 - 1:32pm
 DRAWING: S:\JOB\1002005\05-340\IDS_05-340.dwg\PHASE\IMPROVEMENT PLANS\Q_PLAN_C5.6 WATER PLAN.dwg



DATE	REVISIONS
4/28/06	OWNER/COUNTY COMMENTS
5/19/06	ST. CHARLES CO. REVIEW COMMENTS
6/5/06	DUCHEFF CREEK SAN DIST COMMENTS
6/29/06	PLANS FOR REVIEW COMMENTS
8/21/06	COUNTY COMMENTS

DEVELOPER/OWNER:
THE JONES COMPANY HOMES, L.L.C.
 16640 CHESTERFIELD GROVE, SUITE 160
 CHESTERFIELD, MO 63005
 PHONE: (636) 537-7192

THE PROFESSIONAL WHOSE SIGNATURE AND PERSONAL SEAL APPEAR HEREON ASSUMES RESPONSIBILITY ONLY FOR THE WORK SHOWN ON THIS PLAN. AND DISCLAIMS SPECIFICATIONS, ESTIMATES, REPORTS, OR OTHER DOCUMENTS OR INSTRUMENTS NOT SEALED BY THE UNDERSIGNED PROFESSIONAL RELATING TO, OR INTENDED TO BE USED FOR, ANY PART OR PARTS OF THE PROJECT TO WHICH THIS PAGE REFERS.

PRESTON WOODS - PHASE I
 IMPROVEMENT PLANS
 RHODES LANE
 ST. CHARLES, MO. 63366
WATER PLAN

planning • engineering • surveying • landscape architecture
COLE
and ASSOCIATES
INCORPORATED
 10777 sunset office dr. suite 10
 saint louis, missouri 63127
 p: 314 984 9887 f: 314 984 0587

DESIGNED BY: JKW
 DRAWN BY: BJ
 CHECKED BY: JFH
 DATE: 2/2/06
 Job Number: **05-340**
 Sheet Number: **C5.8**