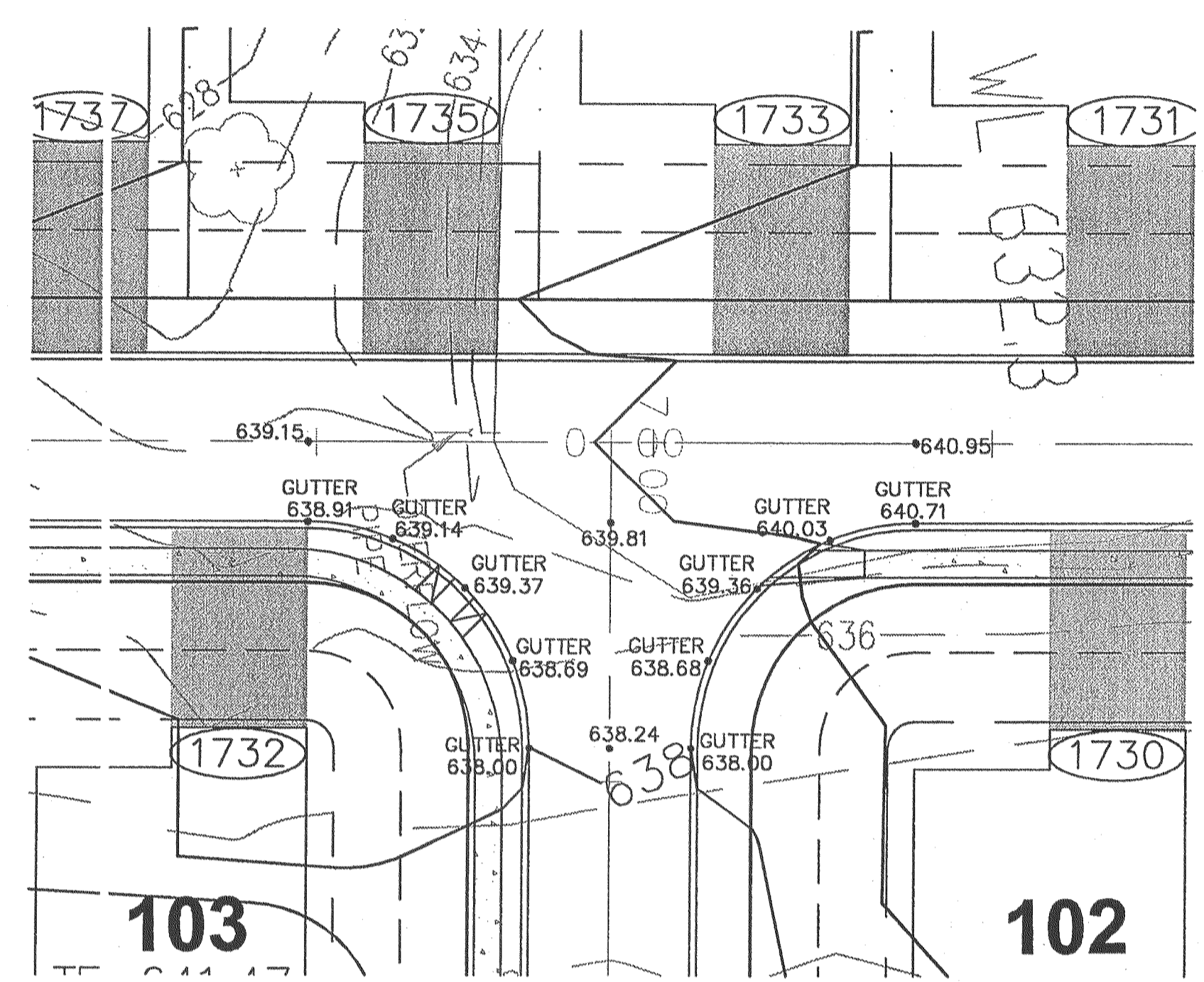
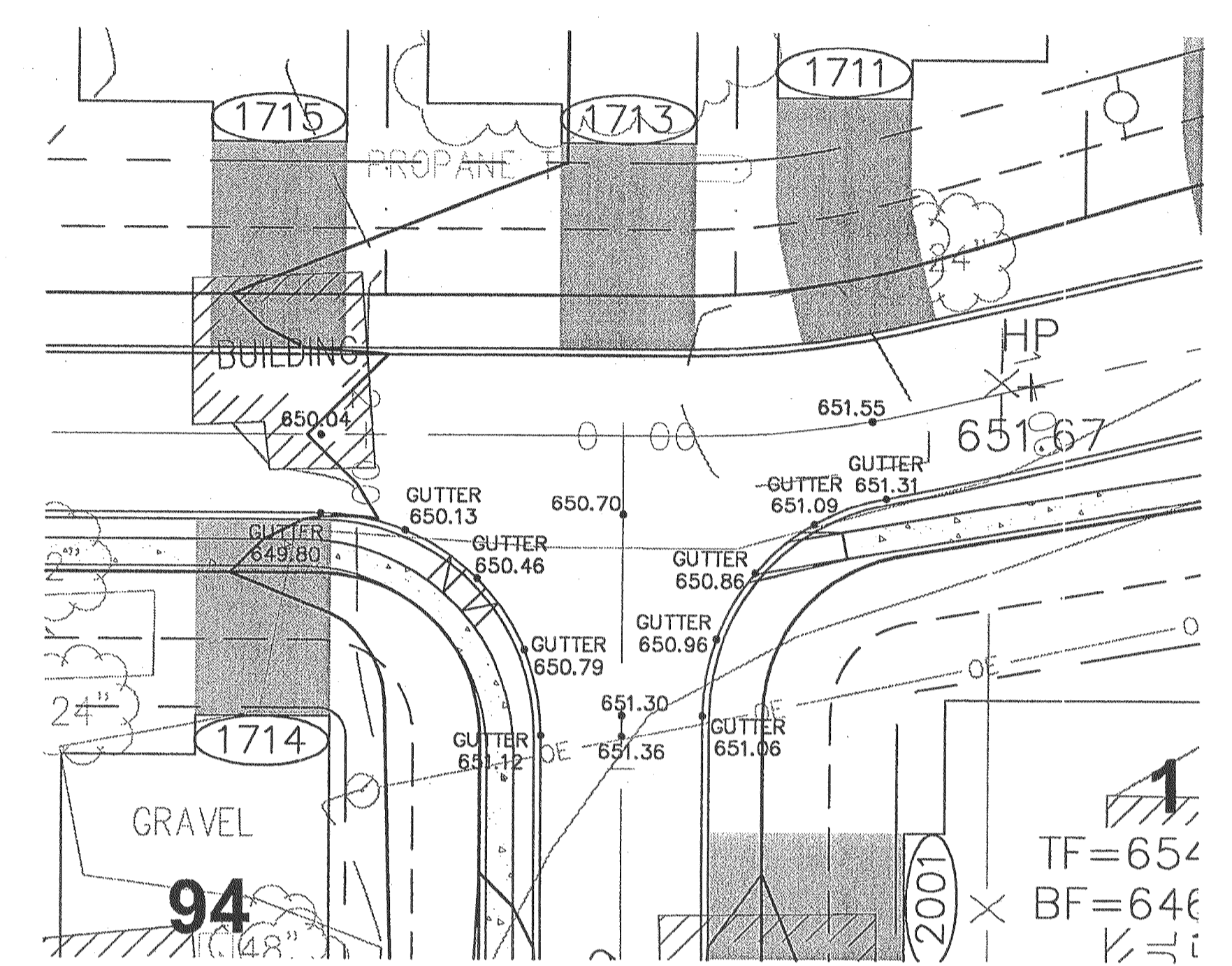


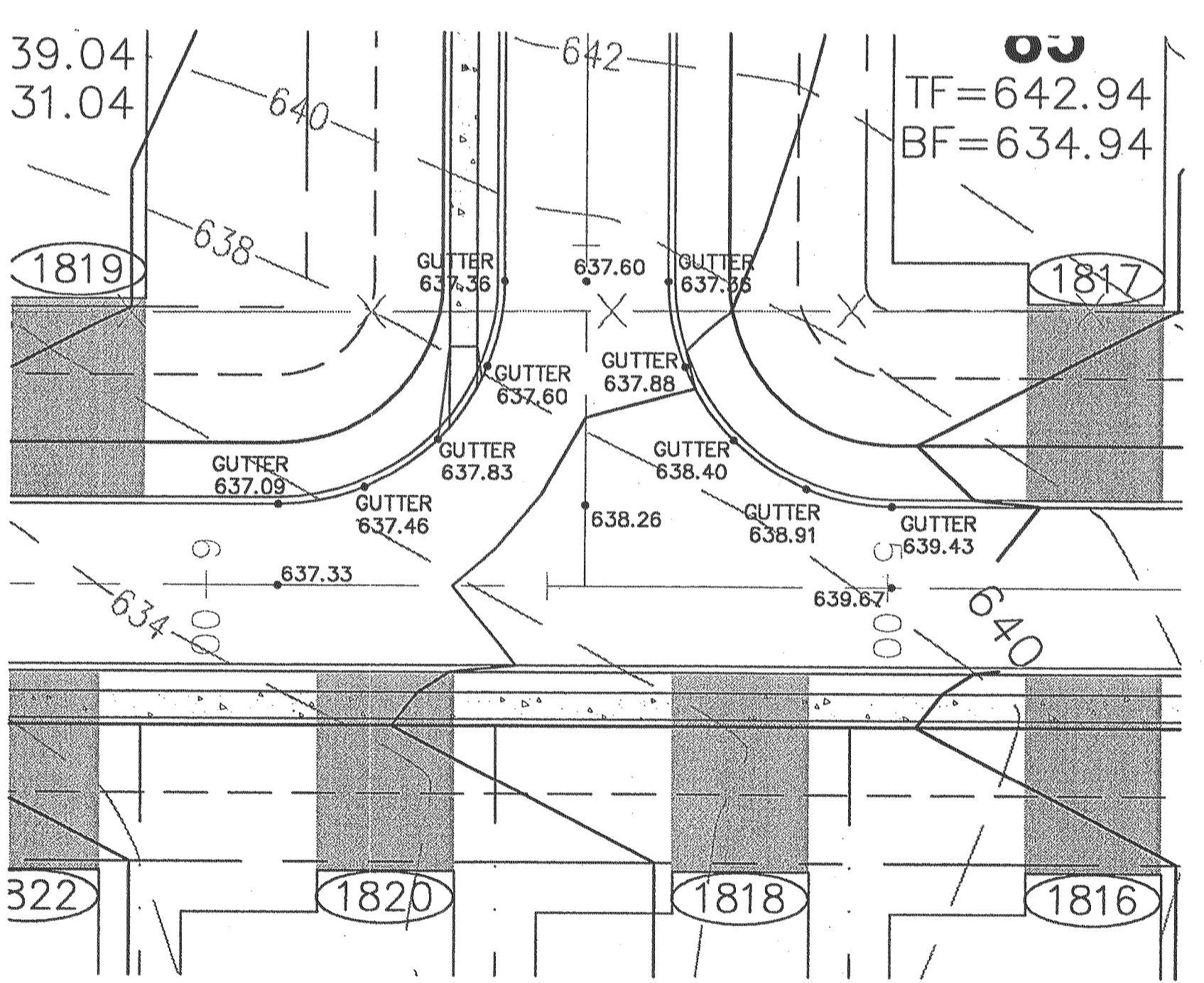
**BRIARMANOR DRIVE - CUL-DE-SAC**



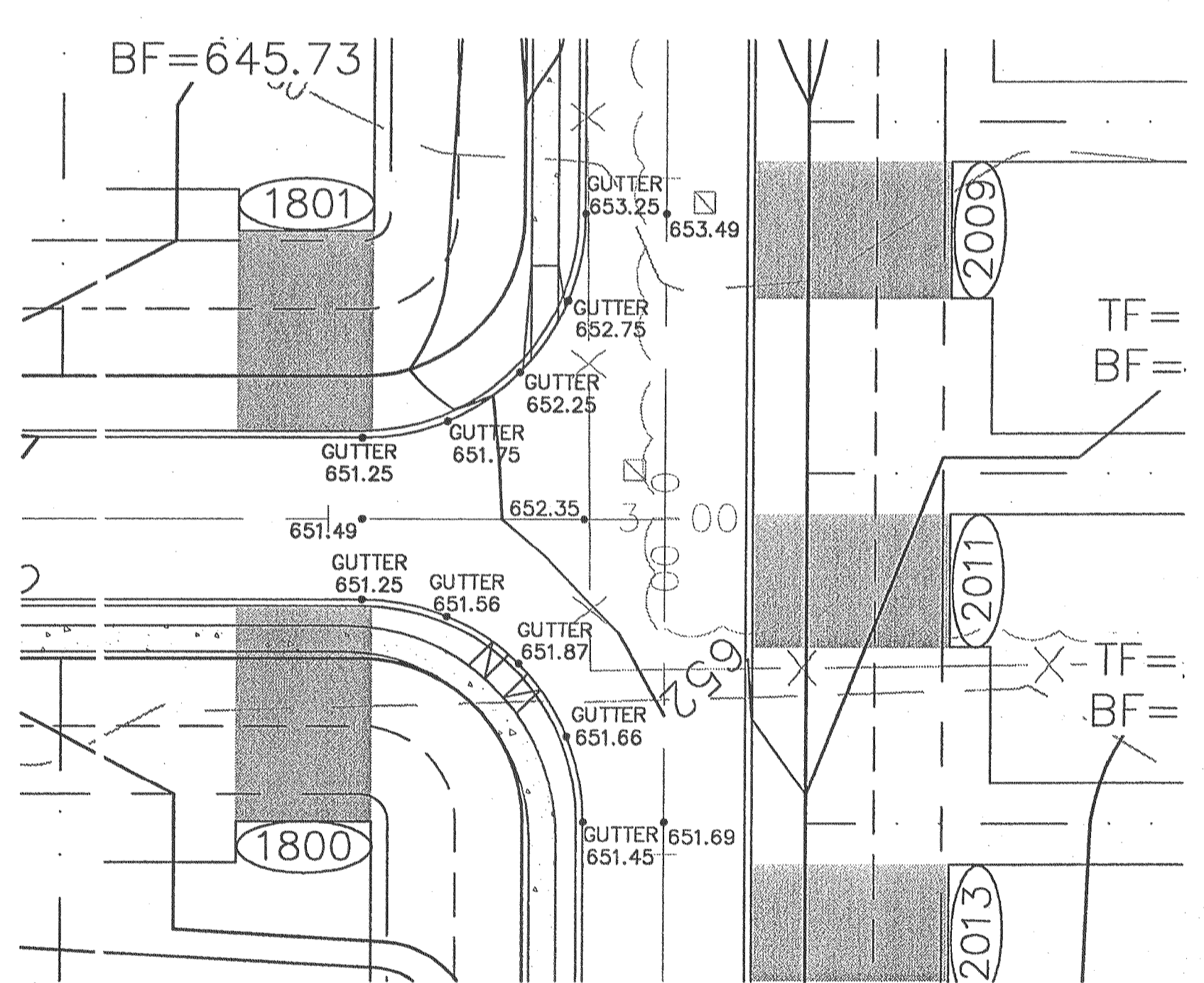
**BRIARMANOR DRIVE - ASPEN MEADOWS DRIVE INTERSECTION**



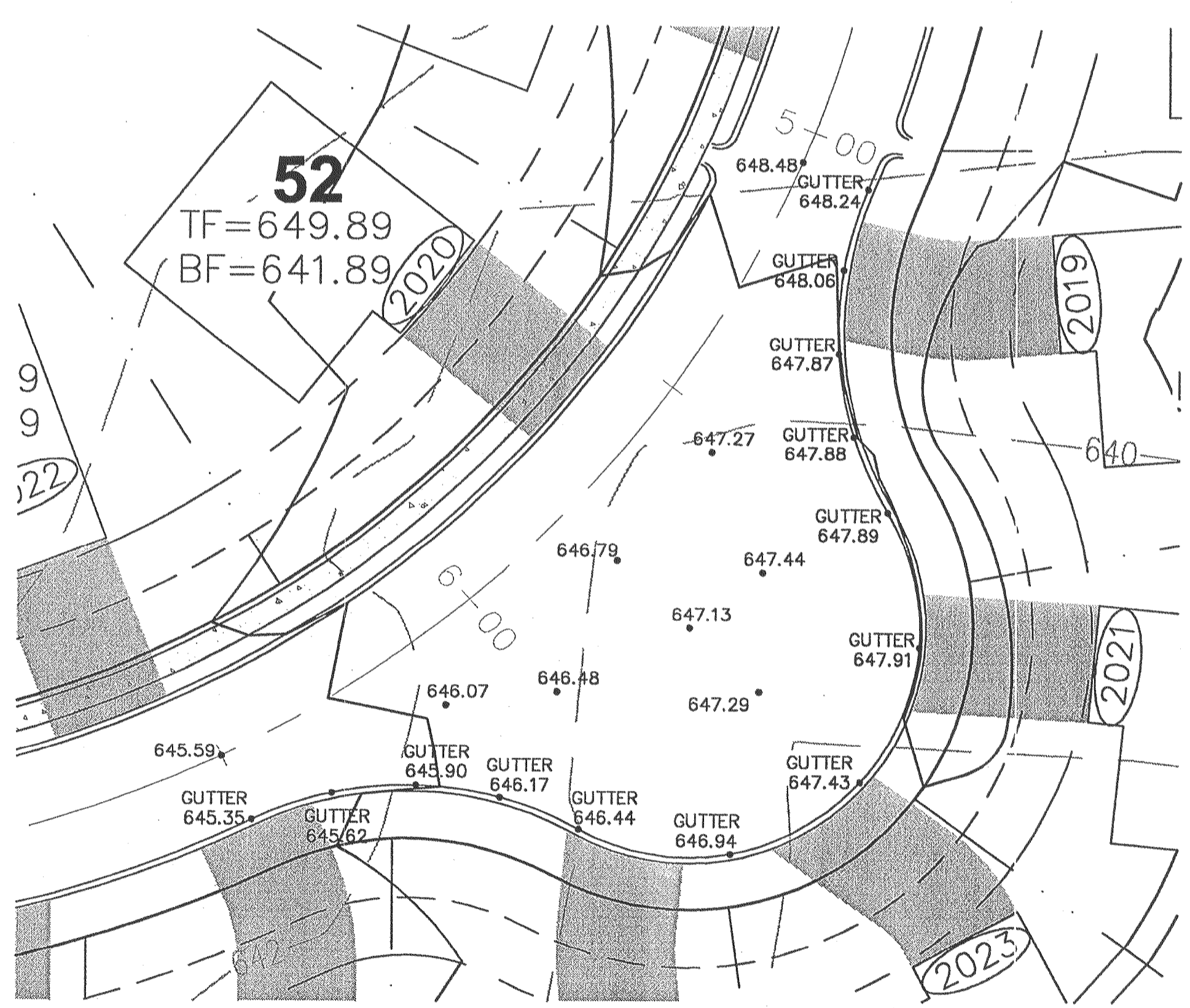
**BRIARMANOR DRIVE - PRESTON WOODS PKWY INTERSECTION**



**ENGLISH OAK DRIVE - ASPEN MEADOWS DRIVE INTERSECTION**



**ENGLISH OAK DRIVE - PRESTON WOODS PKWY INTERSECTION**



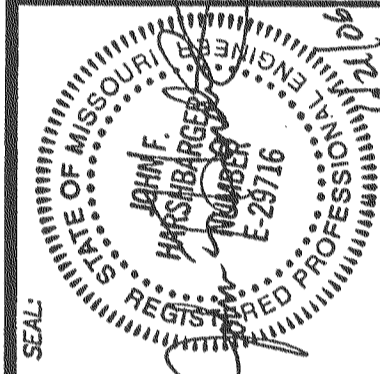
**PRESTON WOODS PKWY BUMP**

RECEIVED  
JUN 22 2006  
ST. CHARLES COUNTY DEPT  
OF PLANNING REVIEW DIVISION

DATE	REVISIONS
4/28/06	OWNER/COUNTY COMMENTS
5/18/06	ST. CHARLES CO. REVIEW COMMENTS
5/25/06	DULCKETT CREEK SAN DIST COMMENTS
6/29/06	PMWD #2 REVIEW COMMENTS
8/22/06	COUNTY COMMENTS

DEVELOPER/OWNER:  
**THE JONES COMPANY HOMES, L.L.C.**  
16640 CHESTERFIELD GROVE, SUITE 160  
CHESTERFIELD, MO 63005  
PHONE: (636) 637-7192

THE PROFESSIONAL WASTE SPONSOR AND PERSONAL SEAL ARE REQUIRED FOR THIS PROJECT. THE PROFESSIONAL WASTE SPONSOR SHALL BE RESPONSIBLE FOR OBTAINING THE NECESSARY PERMITS AND FOR THE PROTECTION OF THE PUBLIC. THE PROFESSIONAL WASTE SPONSOR SHALL BE RESPONSIBLE FOR THE PROTECTION OF THE PUBLIC. THE PROFESSIONAL WASTE SPONSOR SHALL BE RESPONSIBLE FOR THE PROTECTION OF THE PUBLIC.



**PRESTON WOODS - PHASE I**  
IMPROVEMENT PLANS  
RHODES LANE  
ST. CHARLES, MO. 63366  
**WARPING DETAILS**

planning • engineering • surveying • landscape architecture  
**Cole**  
and ASSOCIATES  
INCORPORATED  
10777 sunset office dr. suite 10  
saint louis, missouri 63127  
p: 314 984 9887 f: 314 984 0587

DESIGNED BY: JKW  
DRAWN BY: BJ  
CHECKED BY: JFH  
DATE: 2/2/06  
Job Number: 05-340  
Sheet Number: C7.0

USER: Mchright TAB: C7.0  
DATE: Jun 21, 2006 - 1:34pm  
DRAWING: S:\JOBS\Jobs2005\05-340\Phase I\IMPROVEMENT PLANS\NO PLAN\_C7.0 WARPING PLAN.dwg

ALL CUL-DE-SACS MUST BE HAND-FORMED BEGINNING AT THE PC'S OF THE ROUNDINGS. A CONTINUOUS SLOPE MUST BE MAINTAINED FROM THE CENTER OF THE CUL-DE-SAC TO THE CURB.