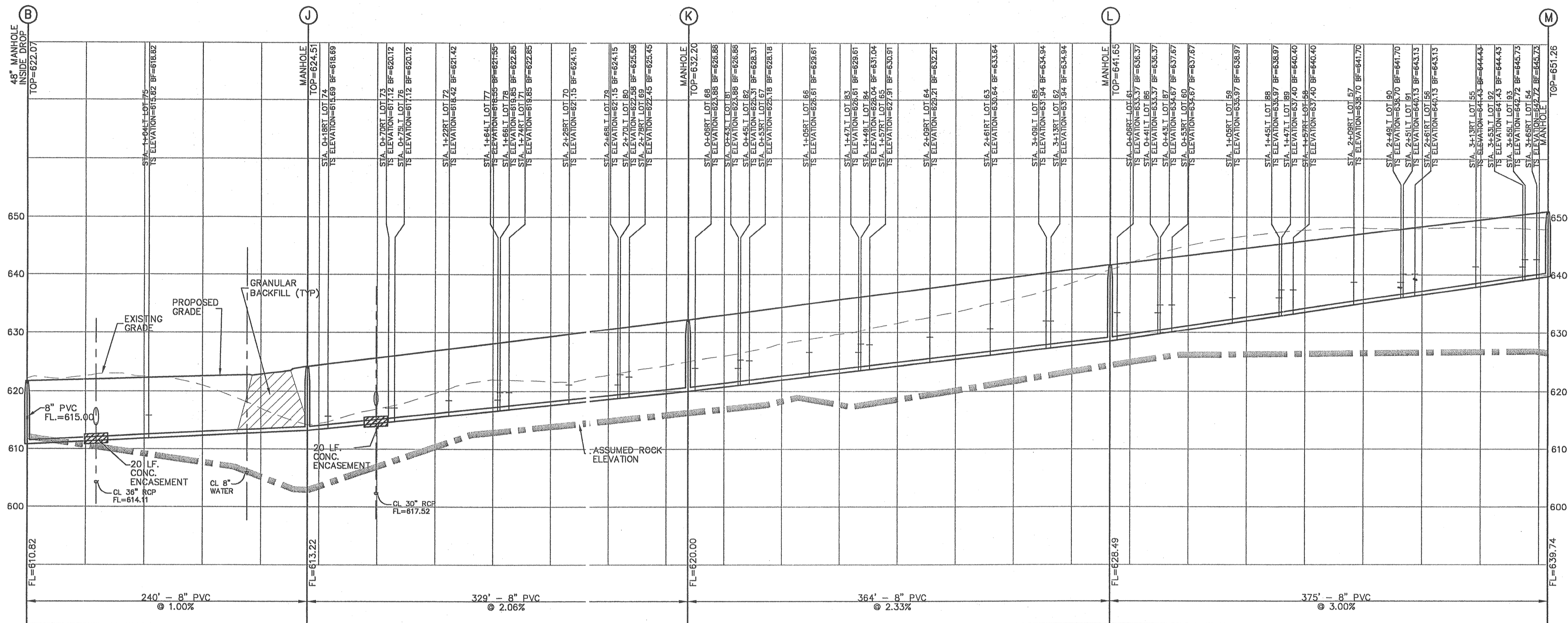


USER: Mknight_TAB: C8.1
 DATE: Jun 21, 2006 - 1:39pm
 DRAWING: ST:\055\055205\05-340\LD_05-340.dwg PHASE: \IMPROVEMENT PLANS\0_JPL\AL_C8.0 SANITARY PROFILES.dwg



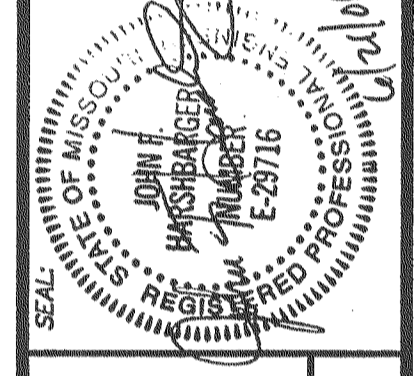
RECEIVED
 JUN 22 2006
 ST. CHARLES COUNTY
 COMMUNITY DEVELOPMENT DEPT.
 DEVELOPMENT REVIEW DIVISION

NOTE: STORM SEWER PIPES WHICH CROSS OVER EXISTING OR PROPOSED SANITARY SEWER TRENCHES SHALL BE CRADLED IN CONCRETE THROUGH THE FULL WIDTH OF THE SANITARY SEWER TRENCH. THE TRENCH SHALL BE BACKFILLED AND COMPACTED WITH GRANULAR FILL TO THE BOTTOM OF THE CONCRETE CRADLE.
 IF THE STORM AND SANITARY SEWERS ARE PARALLEL AND IN THE SAME TRENCH OR OVER-DIG, THE UPPER PIPE SHALL BE PLACED ON A SHELF AND THE LOWER PIPE SHALL BE BEDDED IN COMPACTED GRANULAR FILL TO THE FLOWLINE OF THE UPPER PIPE.
 ALL SANITARY LATERAL STREET CROSSINGS, IF TRENCHED, SHALL BE BACKFILLED WITH GRANULAR MATERIAL (AGGREGATE).

SCALE:
 1" = 50' HORIZ.
 1" = 10' VERT.

DATE	BY	REVISIONS
7/18/06	JKW	REVISED COUNTY COMMENTS
5/19/06	JKW	REVISED COUNTY COMMENTS
6/5/06	JKW	REVISED COUNTY COMMENTS
6/27/06	JKW	REVISED COUNTY COMMENTS

DEVELOPER/OWNER:
THE JONES COMPANY HOMES, L.L.C.
 16640 CHESTERFIELD GROVE, SUITE 160
 CHESTERFIELD, MO 63005
 PHONE: (636) 637-7192



PRESTON WOODS - PHASE I
 IMPROVEMENT PLANS
 RHODES LANE
 ST. CHARLES, MO. 63366
SANITARY SEWER PROFILE

planning • engineering • surveying • landscape architecture
Gole
 and ASSOCIATES
 INCORPORATED
 10777 sunset office dr. suite 10
 saint louis, missouri, 63127
 p. 314.984.9887 f. 314.984.0687

DESIGNED BY: JKW
 DRAWN BY: BJ
 CHECKED BY: JFH
 DATE: 2/2/06
 Job Number: 05-340
 Sheet Number: C8.1