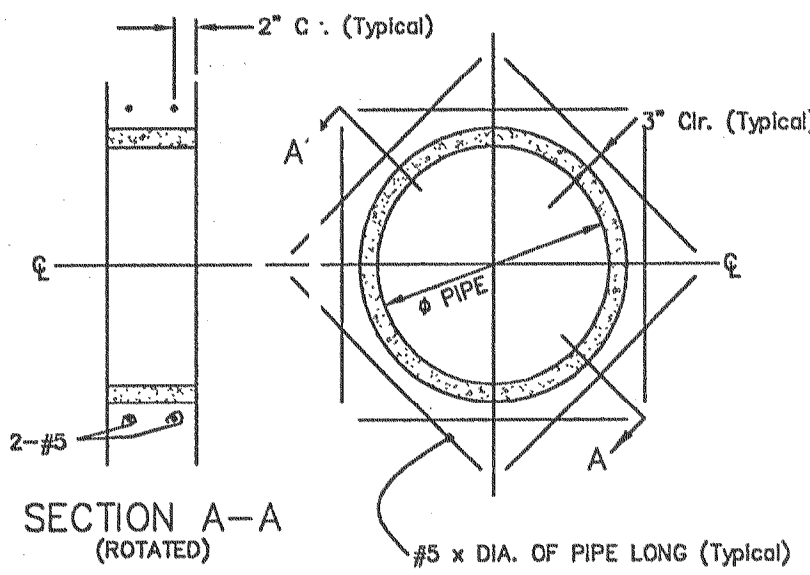
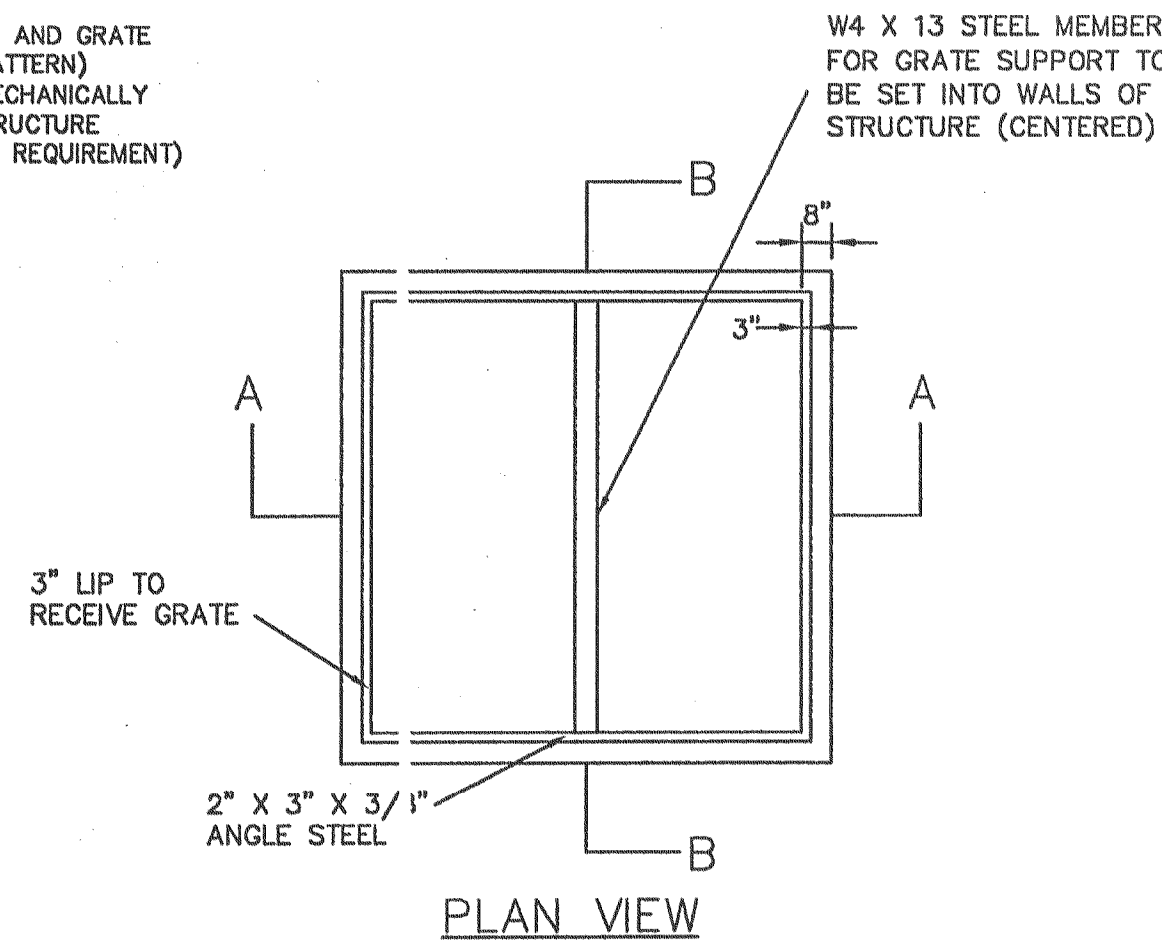
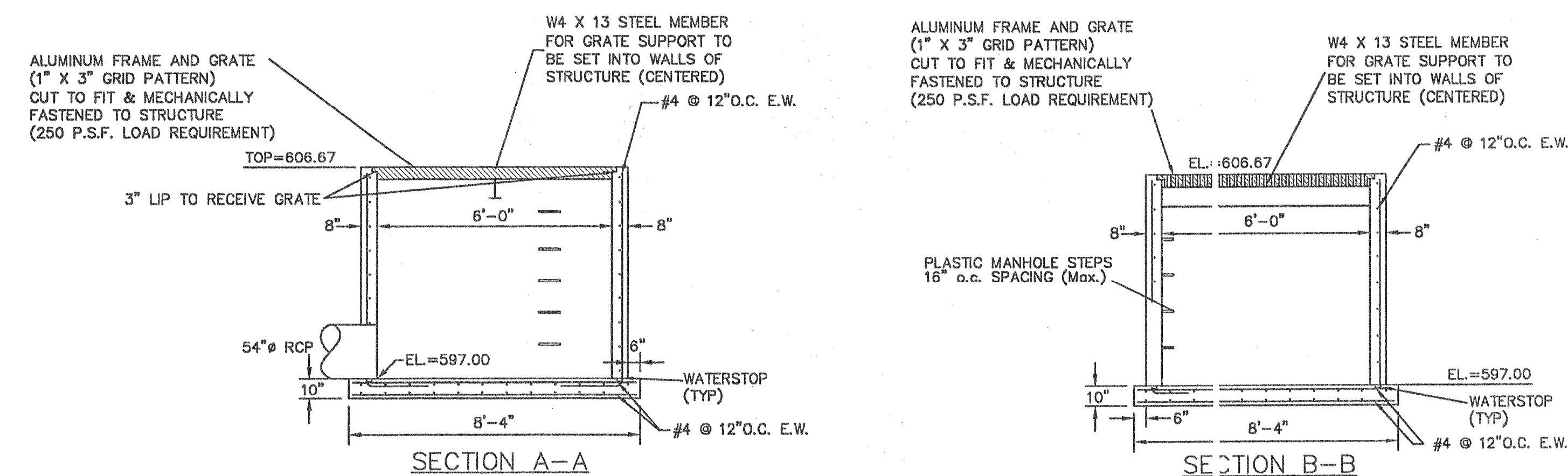


ISOMETRIC

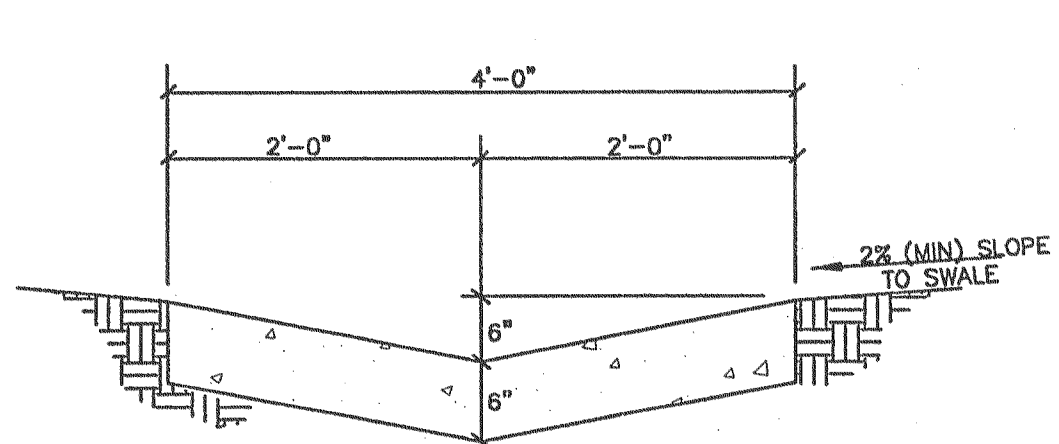


REINFORCING @ DISCHARGE PIPES
SCALE: N.T.S.

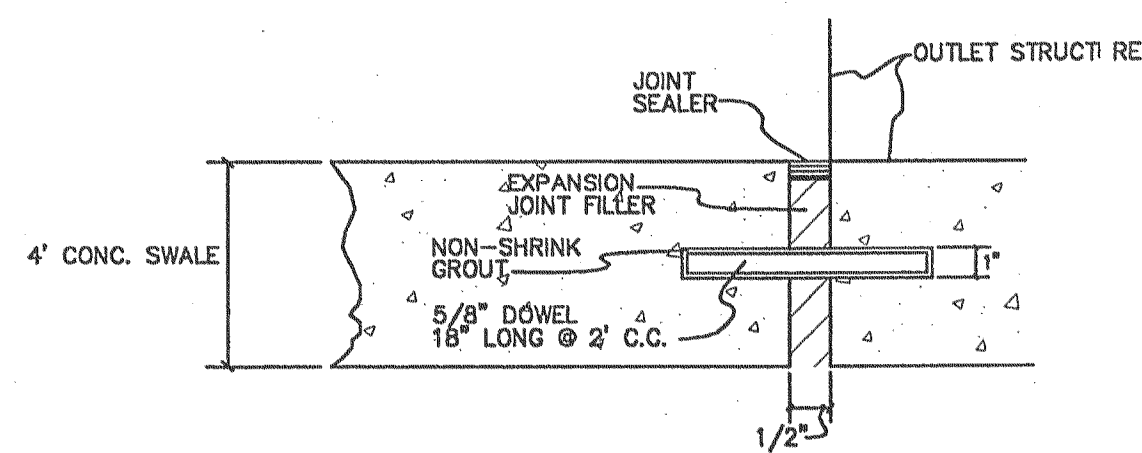
NOTE:
CONTRACTOR RESPONSIBLE FOR OBTAINING BUILDING PERMIT FOR OUTLET STRUCTURE FROM ST. CHARLES COUNTY



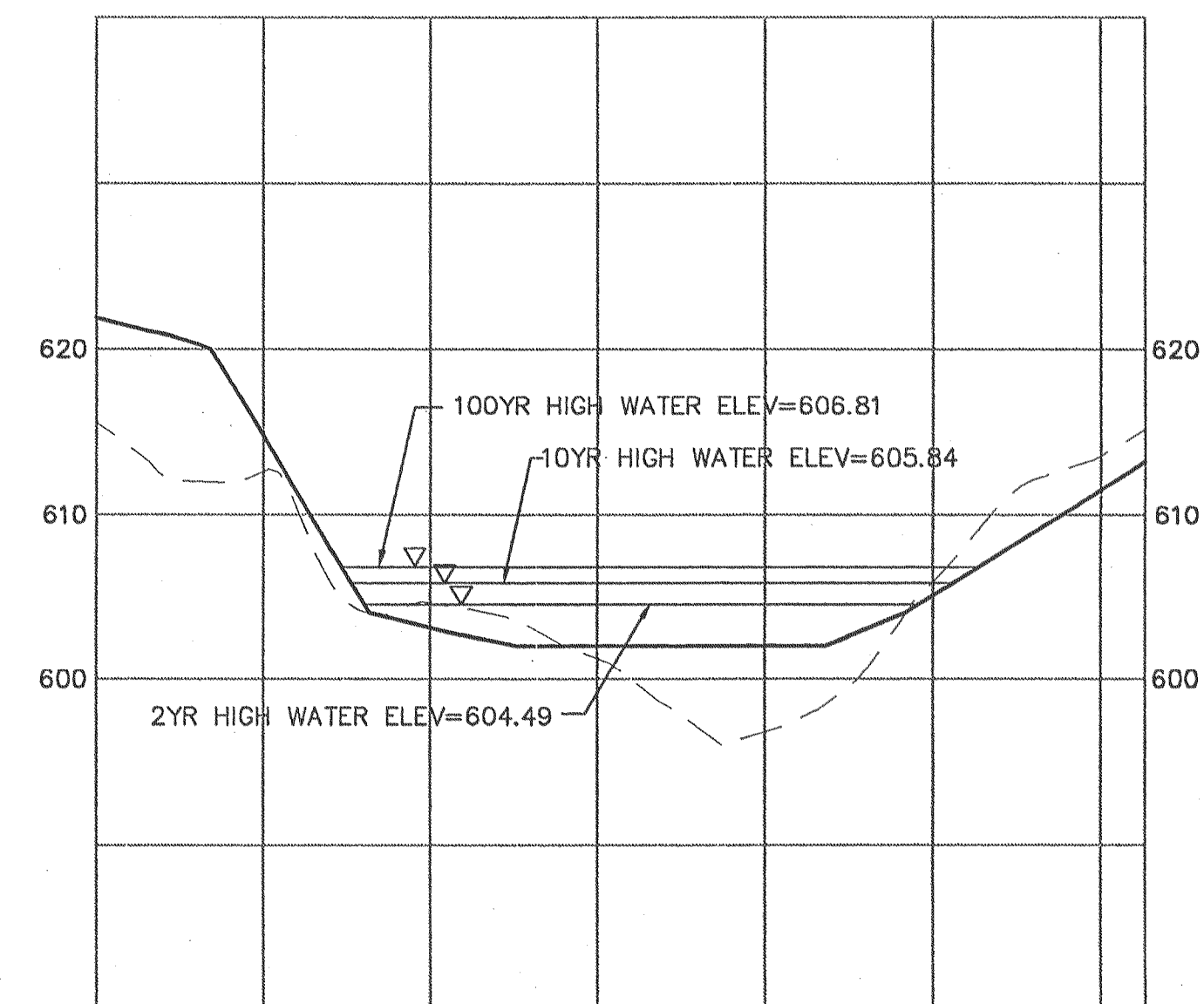
1 BASIN OUTLET STRUCTURE
SCALE: N.T.S. REF. DWG.



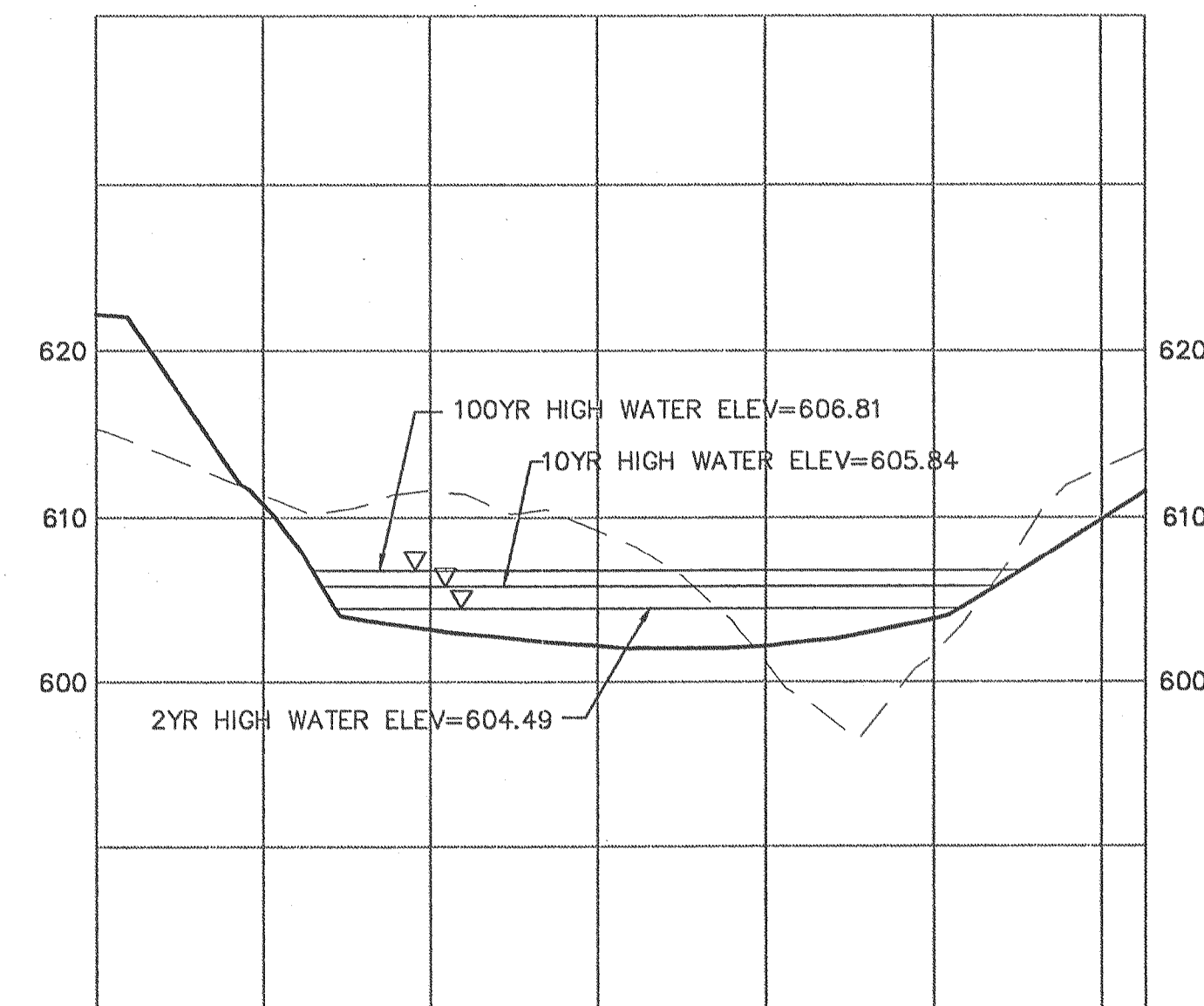
2 CONCRETE SWALE DETAIL
SCALE: N.T.S. REF. DWG.



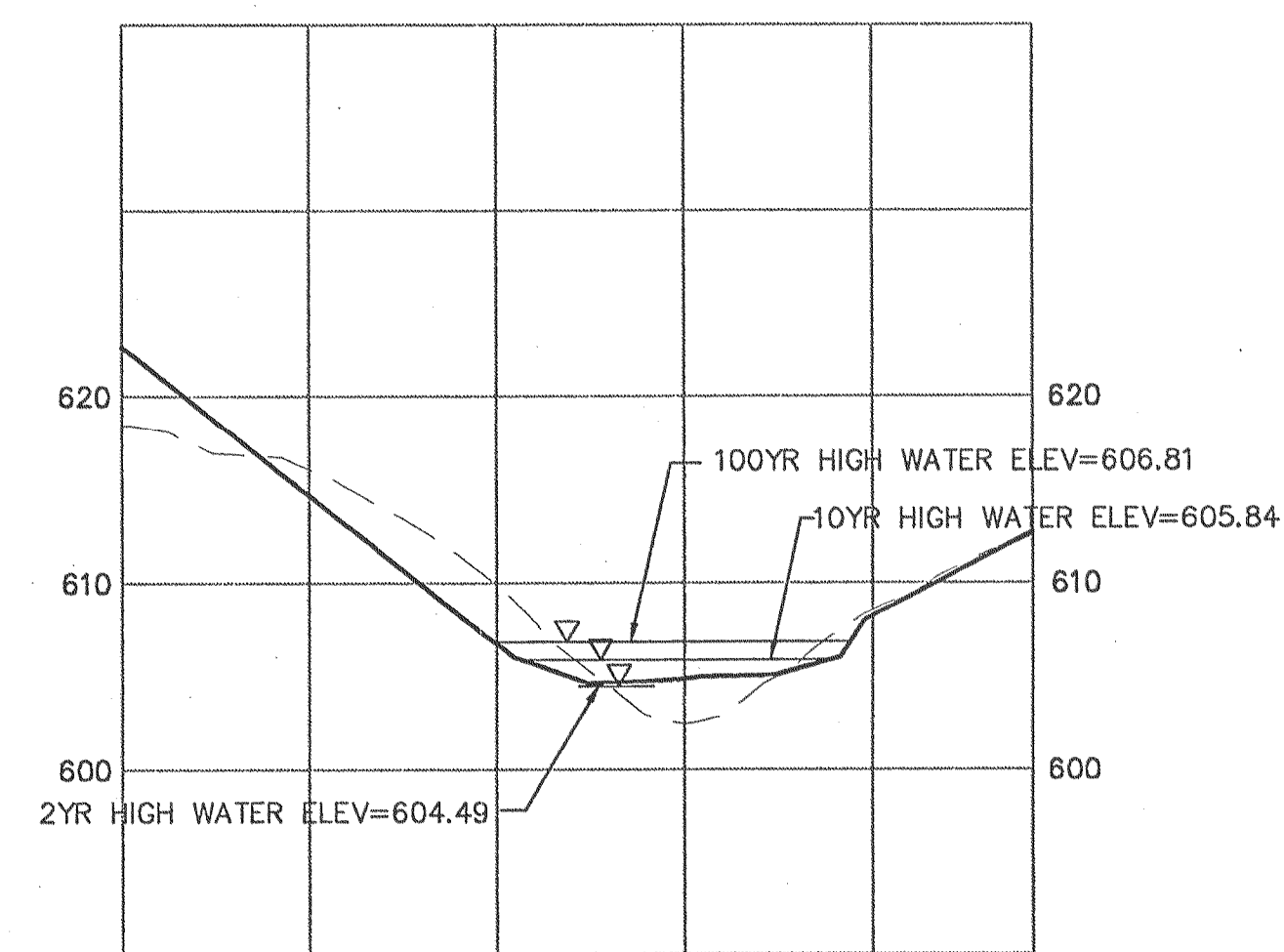
3 DOWEL DETAIL
SCALE: N.T.S. REF. DWG.



SECTION X-X



SECTION Y-Y



SECTION Z-Z

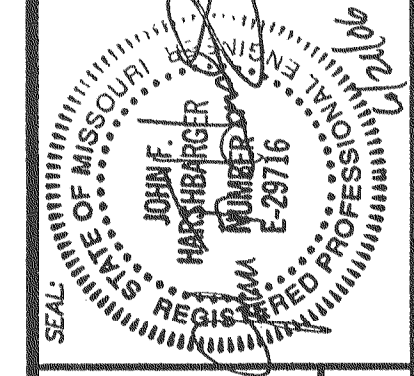
RECEIVED
JUN 22 2006
ST. CHARLES COUNTY
COMMUNITY DEVELOPMENT DEPT
DEVELOPMENT REVIEW DIVISION

DATE	REVISIONS
4/25/06	OWNER COUNTY COMMENTS
5/1/06	BLUESKITT CREEK SAN DIST COMMENTS
6/2/06	PHSD #2 REVIEW COMMENTS
6/27/06	COUNTY COMMENTS

DEVELOPER/OWNER:
THE JONES COMPANY HOMES, L.L.C.
16640 CHESTERFIELD GROVE, SUITE 160
CHESTERFIELD, MO 63005
PHONE: (636) 537-7192

DESIGNED BY: JKW
DRAWN BY: BJ
CHECKED BY: JFH
DATE: 2/2/06

Job Number: 05-340
Sheet Number: C10.7



PRESTON WOODS - PHASE I
IMPROVEMENT PLANS
RHODES LANE
ST. CHARLES, MO. 63366
DETENTION BASIN DETAILS

planning • engineering • surveying • landscape architecture
COLE
and ASSOCIATES
INCORPORATED
10777 sunset office dr. suite 10
saint louis, missouri 63127
p: 314 984 9887 f: 314 984 0587

DESIGNED BY: JKW
DRAWN BY: BJ
CHECKED BY: JFH

DATE: 2/2/06
Job Number: 05-340
Sheet Number: C10.7

SEE SHEET 11.1 AND 11.2 FOR CROSS SECTION LOCATIONS

NOTE: THE DETAILS SHOWN HEREIN ARE FOR THE PURPOSE OF PRIVATE CONSTRUCTION ONLY. PUBLIC CONSTRUCTION WILL REQUIRE STRICT ADHERENCE TO THE DETAILS PUBLISHED BY DUCKETT CREEK AND ST. CHARLES COUNTY.

USER: Hachin_TAS DETENTION DETAIL 10.7
DATE: Jun 21, 2006 11:42am
DRAWING: S:\055\Jobs\2005\05-340\LD5-340\DWG\PHASE I\IMPROVEMENT PLANS\0-PLAN_C10.00_DETAILS.dwg