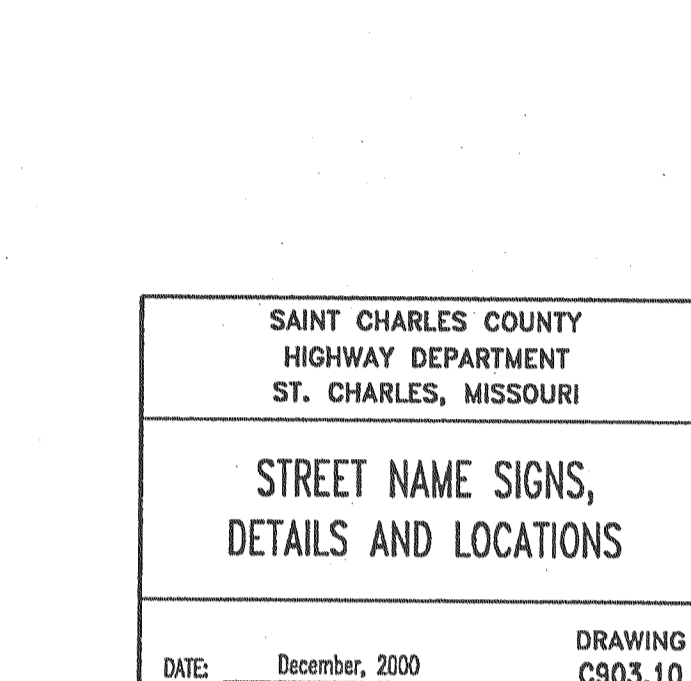


GENERAL NOTES

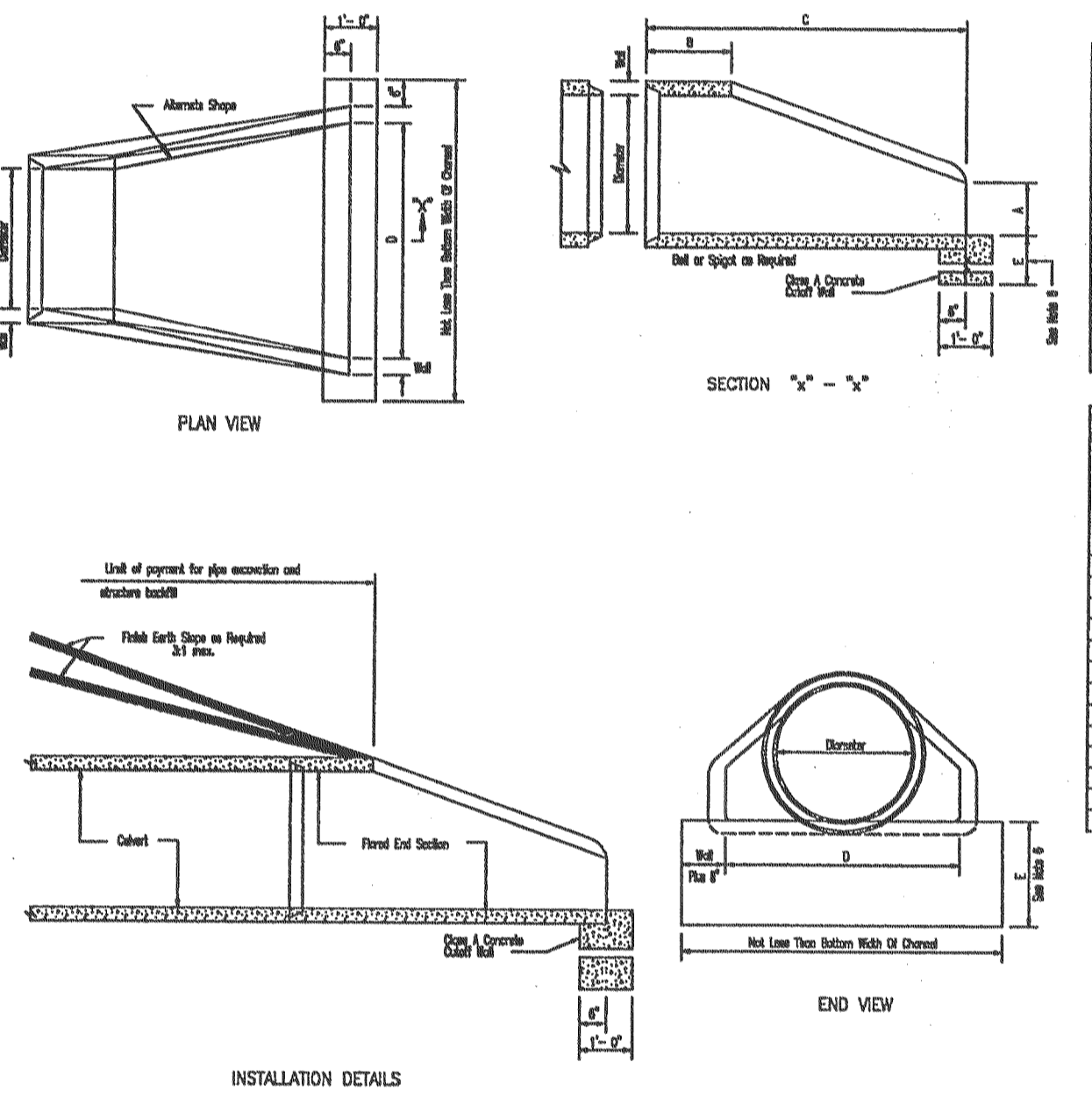
1. Street Name Sign plates shall be 9 inches wide extruded aluminum panels in 30, 36, 42, 48, 54 and 60 inch lengths per drawing shown on this sheet.
2. Sign Legend shall be 6 inch Series C Reflective White lettering for Street Name and 4 inch Reflective Series B lettering for the suffix on Green Reflective background. All Reflective Signage shall be Type II-Enclosed Lens and must Federal Specification 78-1719 Section 633.08 Street Reflective materials.
3. Sign Posts shall have a 2 3/8 inch outside diameter and be 12 feet in length. They shall be either Schedule 40 Aluminum Pipe or galvanized steel with a wall thickness of 0.085 inches. The inside wall shall be galvanized or have a hot zinc based organic coating in accordance with ASTM-A153 to obtain a minimum of 0.50 oz. per sq. ft. commercial zinc weight (G-30).
4. Signs are to be mounted a minimum of 3.5 feet from the back of curb with a minimum clearance from the sidewalk of 1.5 feet.
5. Sign posts shall be mounted 18-24 inches in the ground and set in a concrete base.
6. The contractor shall be responsible for verification of underground utilities and structures shown or not shown prior to the placement of sign posts.



SAINT CHARLES COUNTY HIGHWAY DEPARTMENT ST. CHARLES, MISSOURI

STREET NAME SIGNS, DETAILS AND LOCATIONS

DATE: December, 2000 DRAWING C903.10



REINFORCEMENT

SECTION	REINFORCEMENT	REMARKS
12"	1# 4	MINIMUM
15"	1# 4	MINIMUM
18"	1# 4	MINIMUM
21"	1# 4	MINIMUM
24"	1# 4	MINIMUM
27"	1# 4	MINIMUM
30"	1# 4	MINIMUM
33"	1# 4	MINIMUM
36"	1# 4	MINIMUM
39"	1# 4	MINIMUM
42"	1# 4	MINIMUM
45"	1# 4	MINIMUM
48"	1# 4	MINIMUM
51"	1# 4	MINIMUM
54"	1# 4	MINIMUM
57"	1# 4	MINIMUM
60"	1# 4	MINIMUM

GENERAL NOTES

1. Do not scale drawing. Follow dimensions.
2. Sign sections to both sides and dimensions to be shown.
3. All steel bars shall be separated from the pavement and each by expansion joint material.
4. All steel bars shall be separated from the pavement and each by expansion joint material.
5. All steel bars shall be separated from the pavement and each by expansion joint material.
6. All steel bars shall be separated from the pavement and each by expansion joint material.
7. All steel bars shall be separated from the pavement and each by expansion joint material.
8. All steel bars shall be separated from the pavement and each by expansion joint material.
9. All steel bars shall be separated from the pavement and each by expansion joint material.
10. All steel bars shall be separated from the pavement and each by expansion joint material.

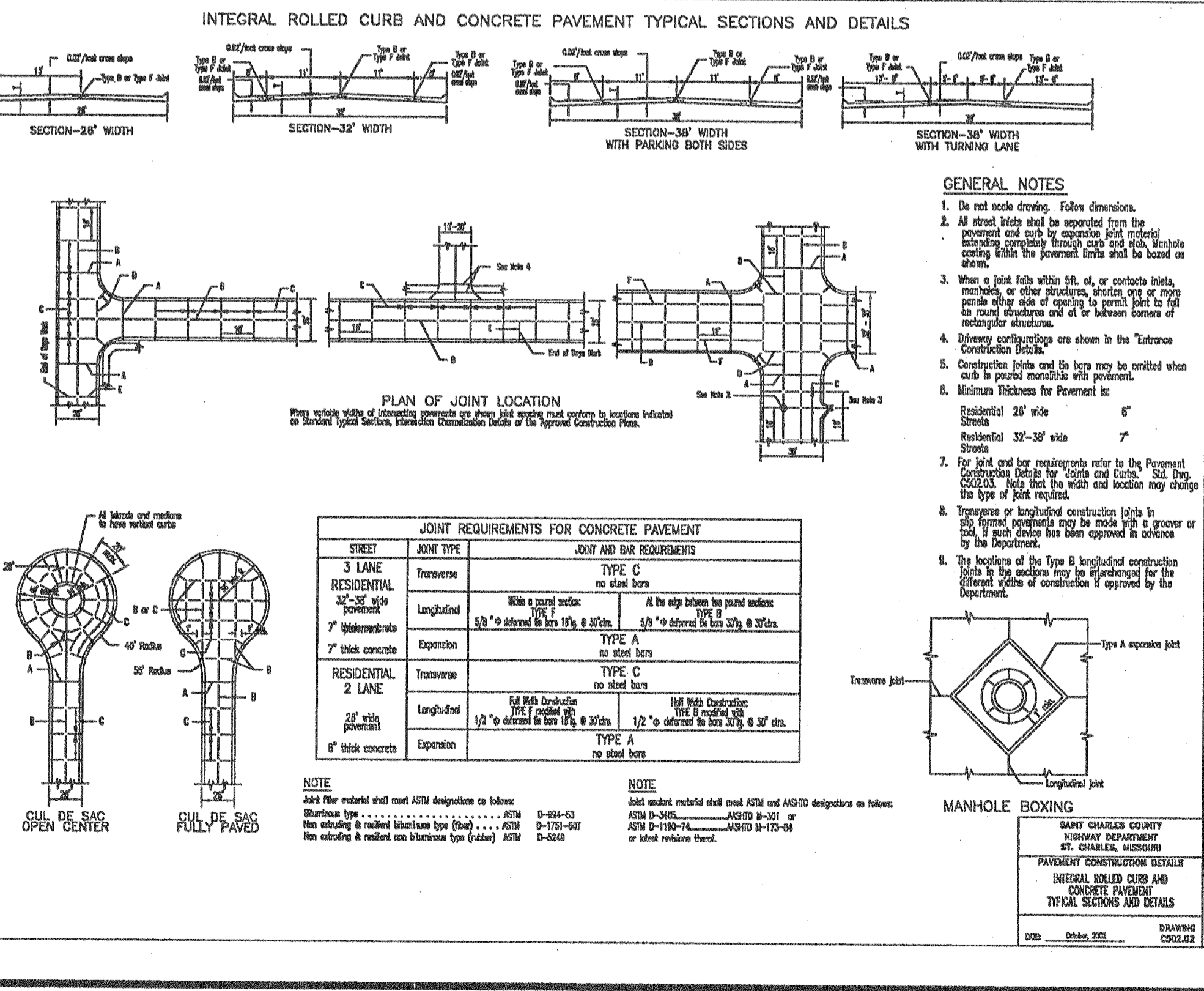
SAINT CHARLES COUNTY HIGHWAY DEPARTMENT ST. CHARLES, MISSOURI

SEWER CONSTRUCTION DETAILS

FLARED END SECTION

(PRECAST CONCRETE)

DATE: June, 2002 DRAWING C904.10

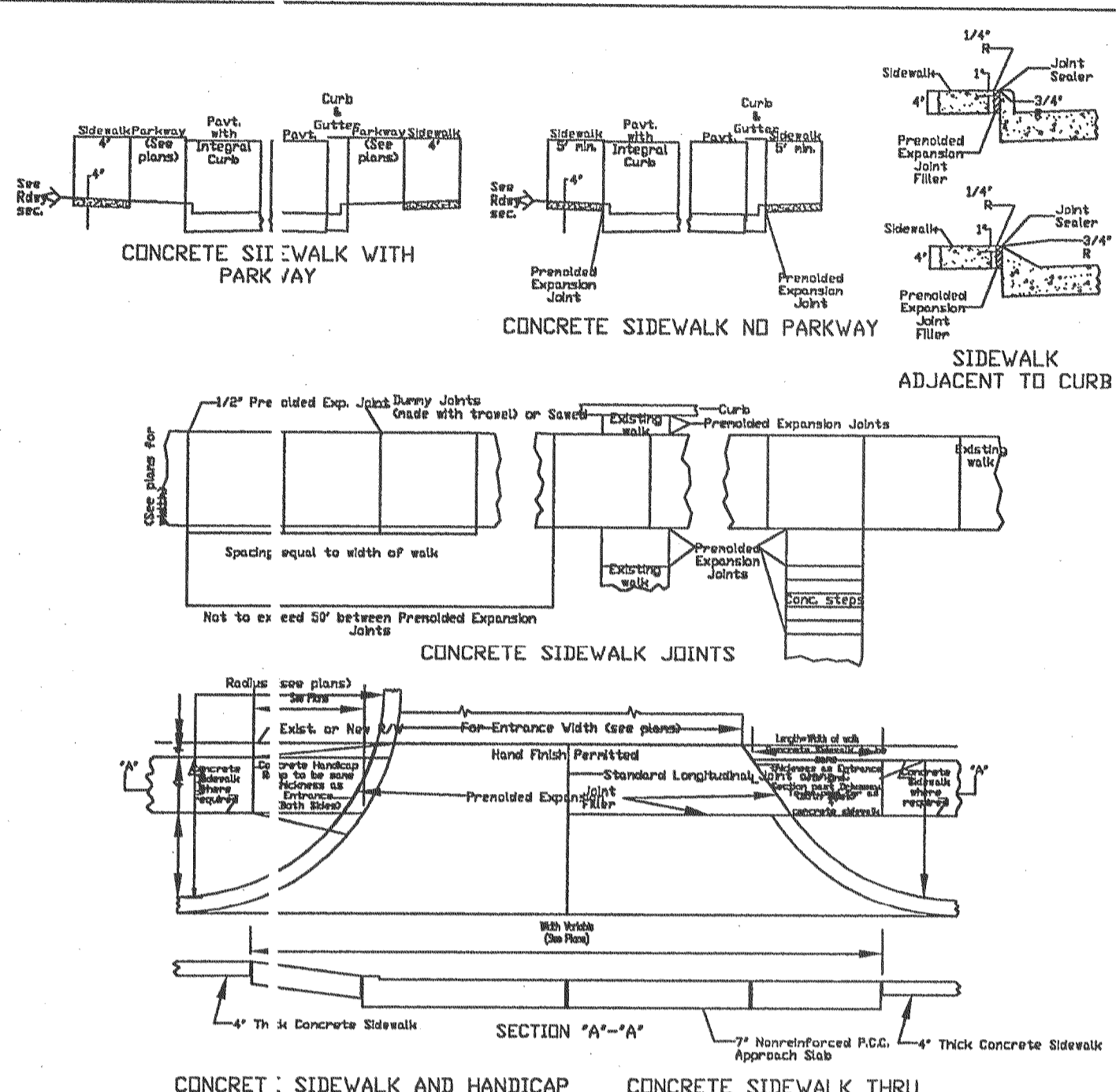
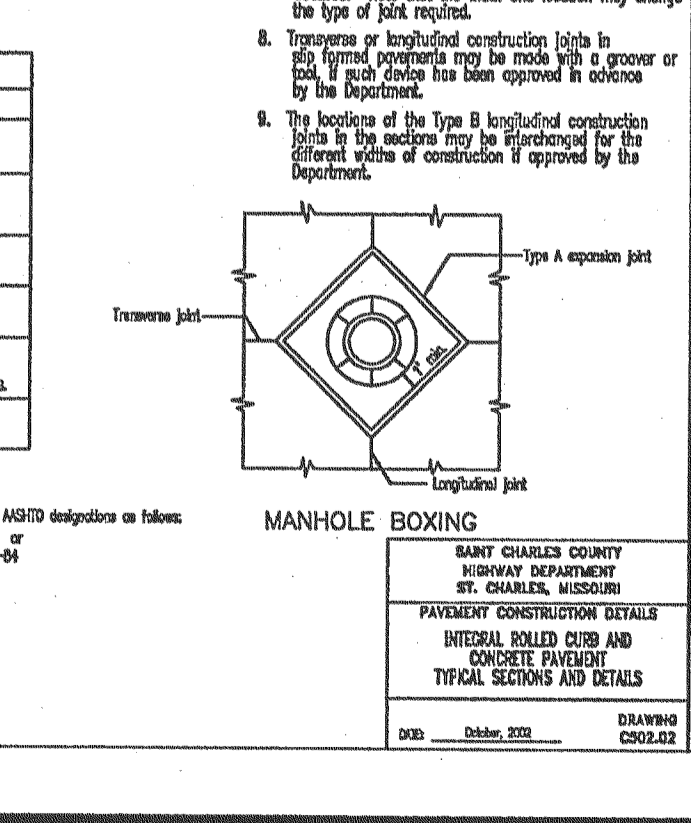


GENERAL NOTES

1. Do not scale drawing. Follow dimensions.
2. All steel bars shall be separated from the pavement and each by expansion joint material.
3. All steel bars shall be separated from the pavement and each by expansion joint material.
4. All steel bars shall be separated from the pavement and each by expansion joint material.
5. All steel bars shall be separated from the pavement and each by expansion joint material.
6. All steel bars shall be separated from the pavement and each by expansion joint material.
7. All steel bars shall be separated from the pavement and each by expansion joint material.
8. All steel bars shall be separated from the pavement and each by expansion joint material.
9. All steel bars shall be separated from the pavement and each by expansion joint material.
10. All steel bars shall be separated from the pavement and each by expansion joint material.

JOINT REQUIREMENTS FOR CONCRETE PAVEMENT

STREET	JOINT TYPE	JOINT AND BAR REQUIREMENTS
3 LANE RESIDENTIAL	Transverse	TYPE C no steel bars
4 LANE RESIDENTIAL	Longitudinal	TYPE A no steel bars
7' thick concrete	Expansion	TYPE A no steel bars
RESIDENTIAL 2 LANE	Transverse	TYPE C no steel bars
4 LANE	Longitudinal	TYPE A no steel bars
7' thick concrete	Expansion	TYPE A no steel bars



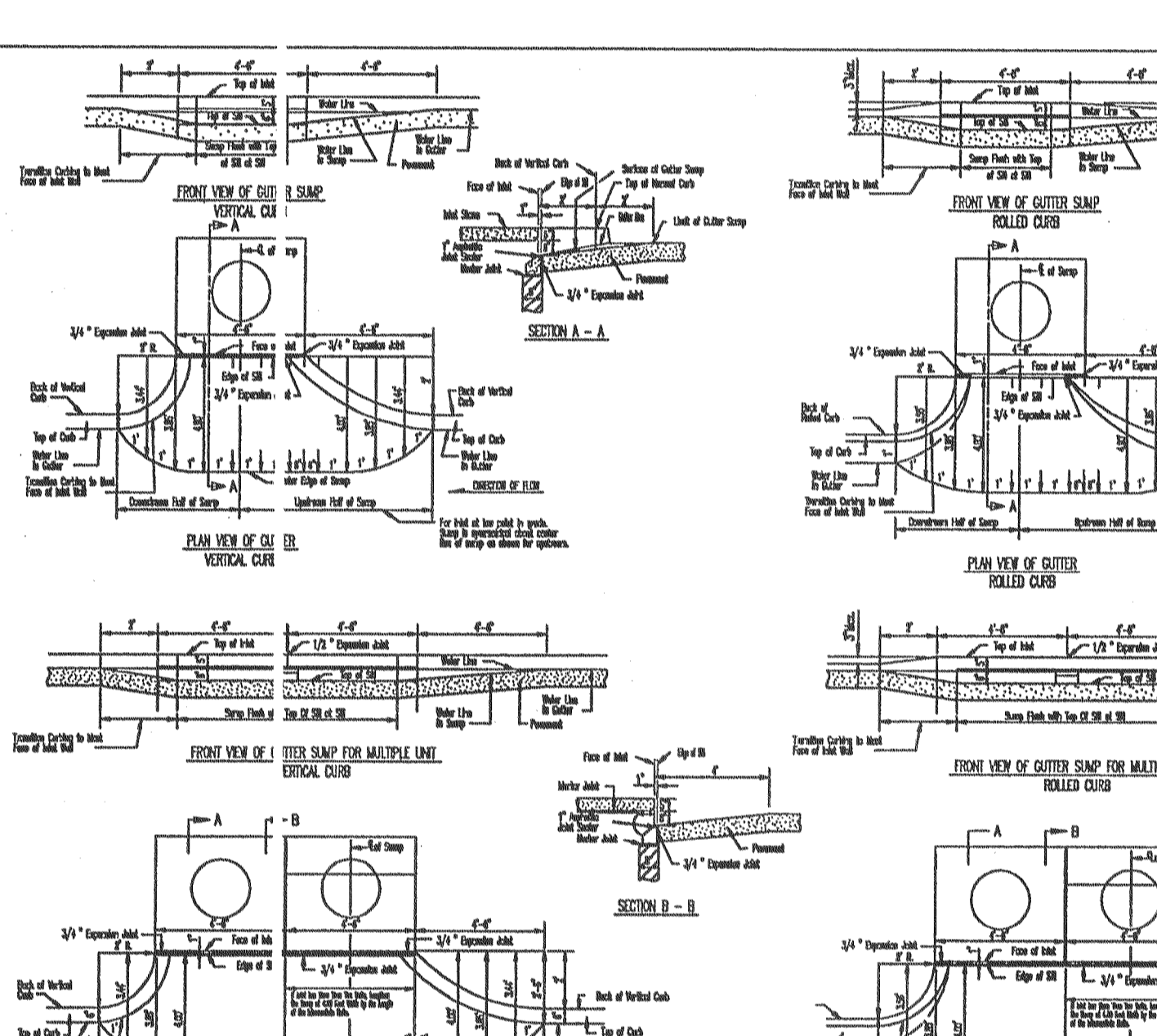
GENERAL NOTES

1. Do not scale drawing. Follow dimensions.
2. Sidewalk cross slope 0.02"/ft.
3. Sidewalk thickness increases to 6" on each side of Private Driveways and 7" on each side of Commercial Driveways for one section of sidewalk equal in length to the width of the sidewalk. See "Entrance Construction Details".
4. Sidewalk thru private and commercial driveways will be paid for as 6" and 7" approaches, see "Integral Curb Detail 'B' at Driveways".
5. For sidewalk locations on Cut-De-Sacs see "Pavement Construction Details".
6. For longitudinal and transverse joints, dowel, and tie bar requirements and dimensions refer to the "Integral Curb Pavement Typical Sections and Details".
7. All necessary pavement markings by St. Charles County.
8. For roadway cross slopes, pavement types, and thickness, refer to "Standard Typical Section".
9. See "Integral Curb Detail 'B' at Driveways" for precast expansion joint requirements.

SAINT CHARLES COUNTY HIGHWAY DEPARTMENT ST. CHARLES, MISSOURI

CONCRETE SIDEWALK

DATE: October, 2002 DRAWING C608.14



GENERAL NOTES

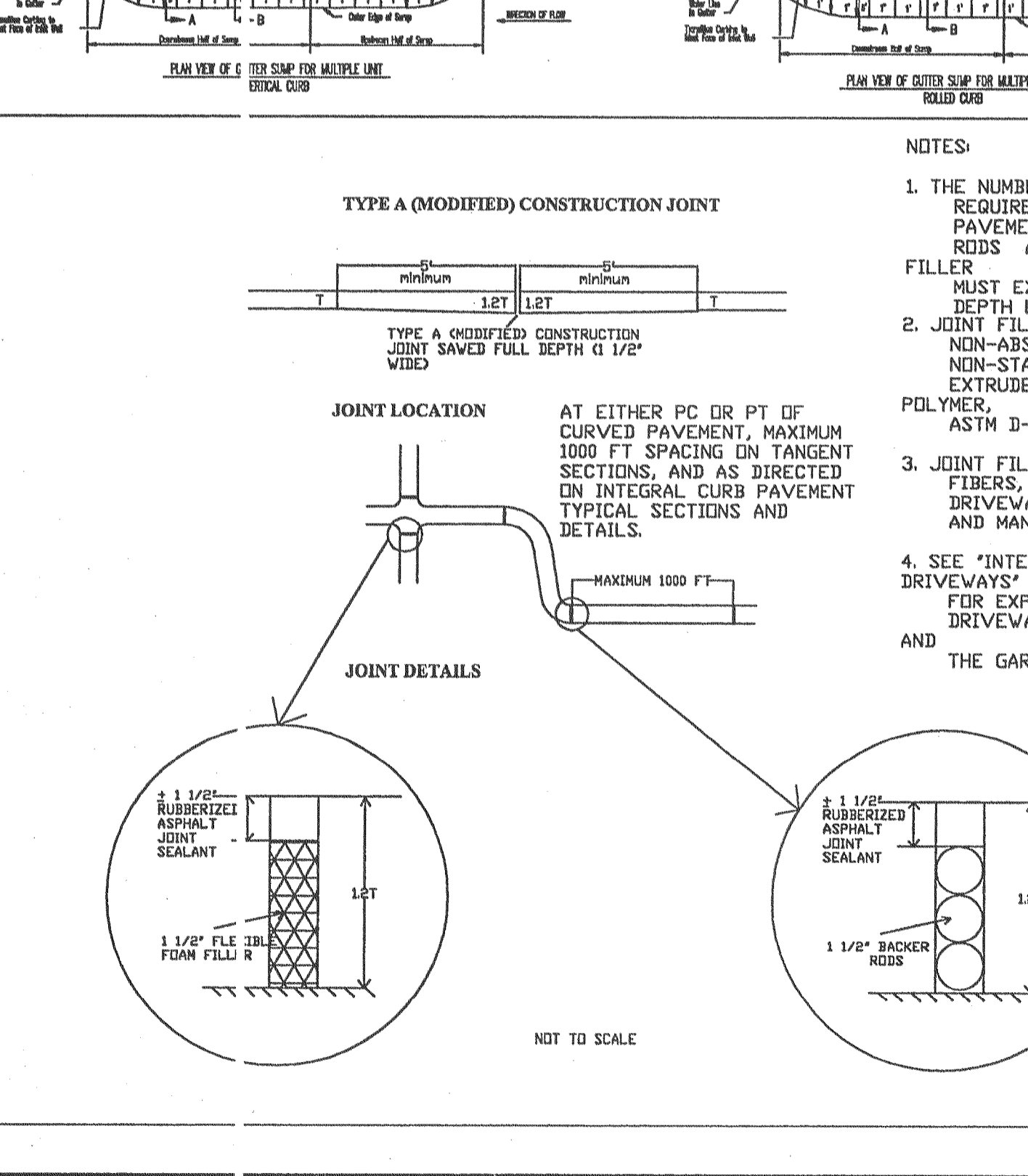
1. Do not scale drawing. Follow dimensions.
2. The details shown are typical from limited to the Street Construction Specifications for the City of St. Charles, Missouri.
3. The details shown are typical from limited to the Street Construction Specifications for the City of St. Charles, Missouri.
4. The details shown are typical from limited to the Street Construction Specifications for the City of St. Charles, Missouri.
5. The details shown are typical from limited to the Street Construction Specifications for the City of St. Charles, Missouri.
6. The details shown are typical from limited to the Street Construction Specifications for the City of St. Charles, Missouri.
7. The details shown are typical from limited to the Street Construction Specifications for the City of St. Charles, Missouri.
8. The details shown are typical from limited to the Street Construction Specifications for the City of St. Charles, Missouri.
9. The details shown are typical from limited to the Street Construction Specifications for the City of St. Charles, Missouri.
10. The details shown are typical from limited to the Street Construction Specifications for the City of St. Charles, Missouri.

SAINT CHARLES COUNTY HIGHWAY DEPARTMENT ST. CHARLES, MISSOURI

SEWER CONSTRUCTION DETAILS

STREET INLET SUMPS

DATE: June, 2002 DRAWING C904.15



GENERAL NOTES

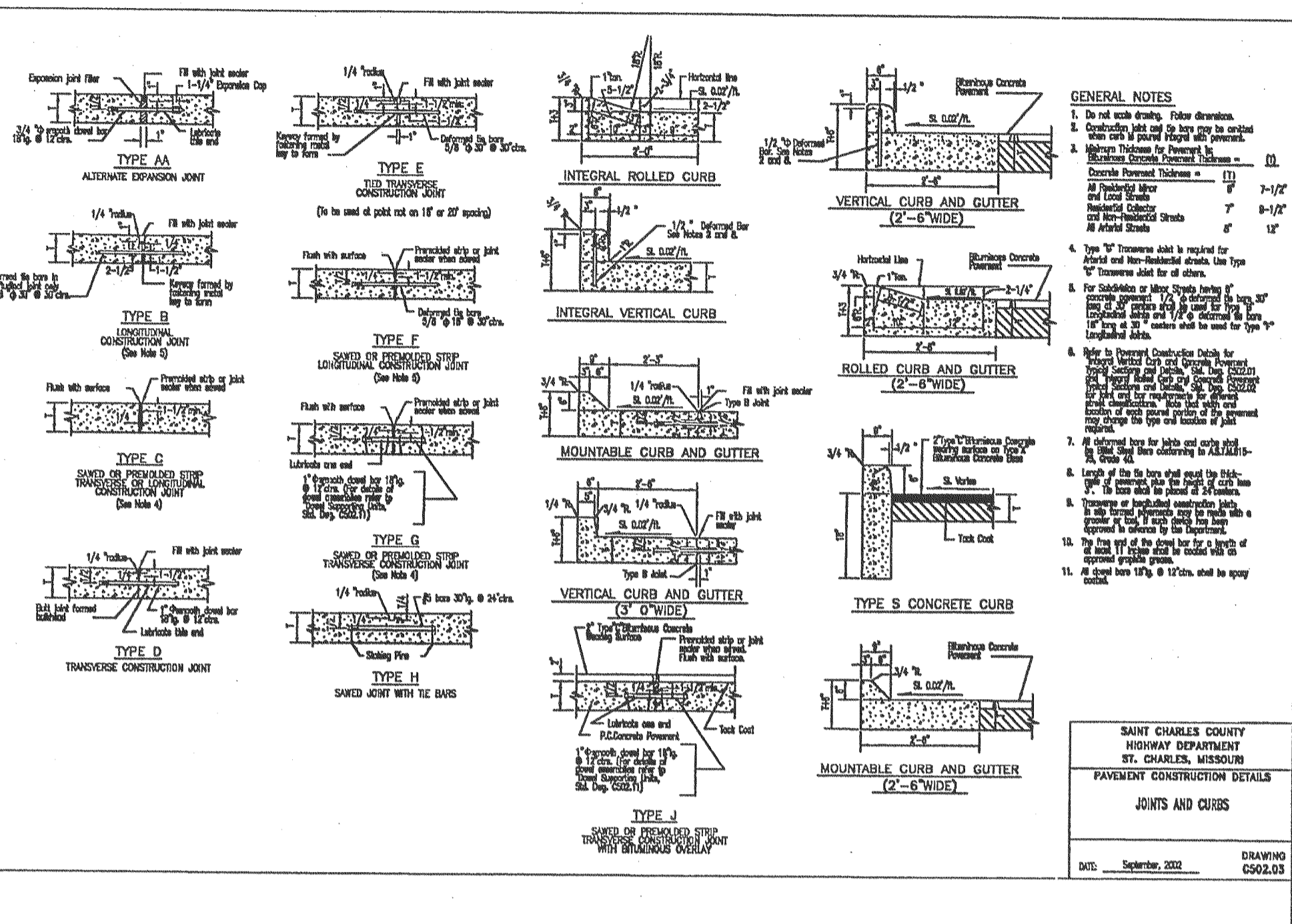
1. THE NUMBER OF BACKER RODS REQUIRED WILL VARY WITH THE PAVEMENT THICKNESS. BACKER RODS AND FLEXIBLE FOAM FILLER MUST EXTEND THROUGH THE FULL DEPTH OF THE PAVEMENT.
2. JOINT FILLER SHALL BE A FLEXIBLE, NON-ABSORBENT, NON-GASSING, NON-STAINING, NON-SHRINKING MATERIAL, EXTRUDED FROM A CLOSED-CELL POLYMER, ASTM D-5249.
3. JOINT FILLER COMPOSED OF CELLULAR FIBERS, ASTM D-1751, MAY BE USED AT DRIVEWAY, SIDEWALK, AND SEWER INLET AND MANHOLE LOCATIONS.
4. SEE "INTEGRAL CURB DETAIL 'B' AT DRIVEWAYS" FOR EXPANSION JOINT REQUIREMENTS AT DRIVEWAY CONNECTIONS TO THE STREET AND THE GARAGE.

SAINT CHARLES COUNTY HIGHWAY DEPARTMENT ST. CHARLES, MISSOURI

SEWER CONSTRUCTION DETAILS

STREET INLET SUMPS

DATE: June, 2002 DRAWING C904.15



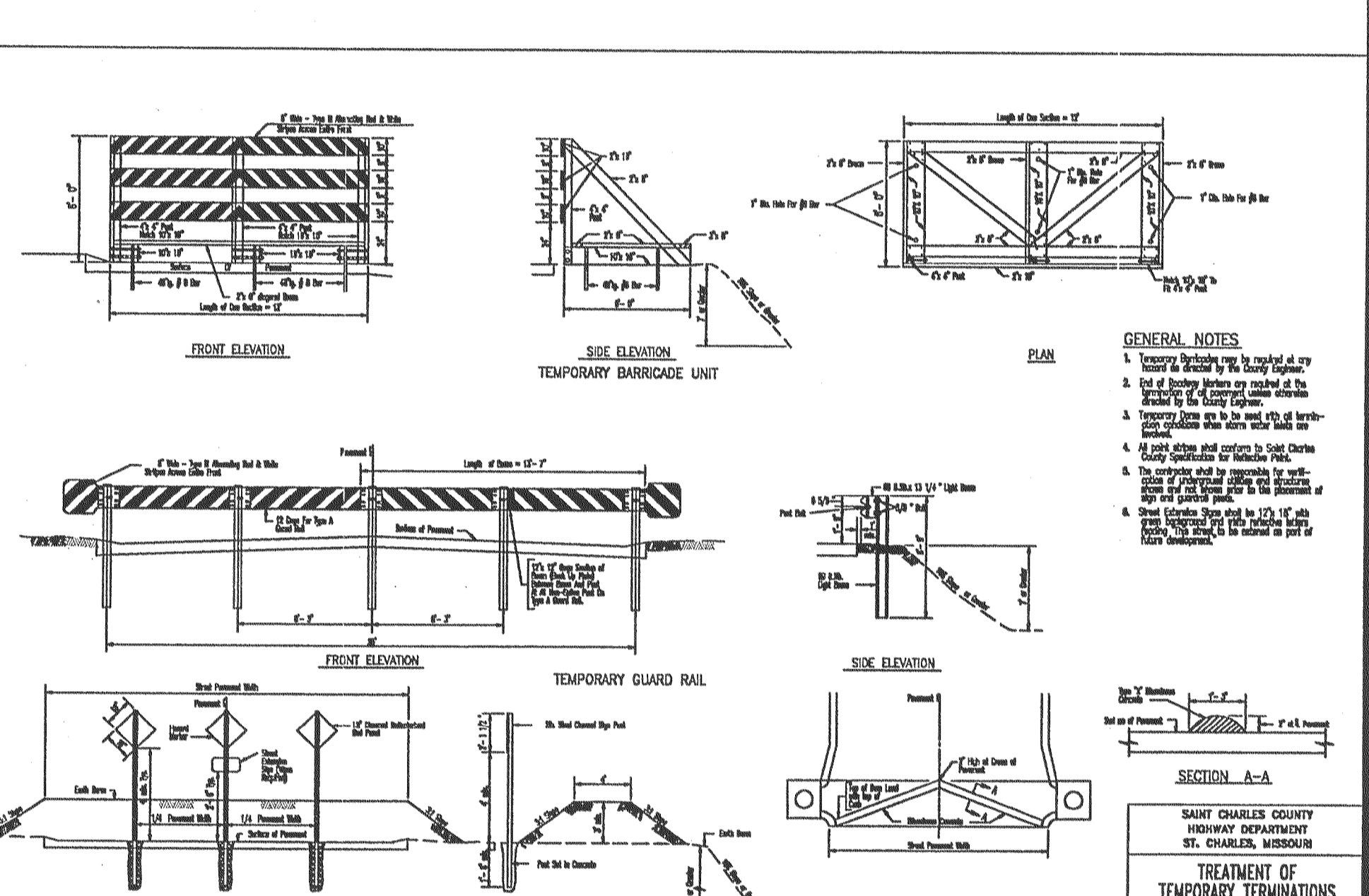
GENERAL NOTES

1. Do not scale drawing. Follow dimensions.
2. The details shown are typical from limited to the Street Construction Specifications for the City of St. Charles, Missouri.
3. The details shown are typical from limited to the Street Construction Specifications for the City of St. Charles, Missouri.
4. The details shown are typical from limited to the Street Construction Specifications for the City of St. Charles, Missouri.
5. The details shown are typical from limited to the Street Construction Specifications for the City of St. Charles, Missouri.
6. The details shown are typical from limited to the Street Construction Specifications for the City of St. Charles, Missouri.
7. The details shown are typical from limited to the Street Construction Specifications for the City of St. Charles, Missouri.
8. The details shown are typical from limited to the Street Construction Specifications for the City of St. Charles, Missouri.
9. The details shown are typical from limited to the Street Construction Specifications for the City of St. Charles, Missouri.
10. The details shown are typical from limited to the Street Construction Specifications for the City of St. Charles, Missouri.

SAINT CHARLES COUNTY HIGHWAY DEPARTMENT ST. CHARLES, MISSOURI

JOINTS AND CURBS

DATE: September, 2002 DRAWING C902.03



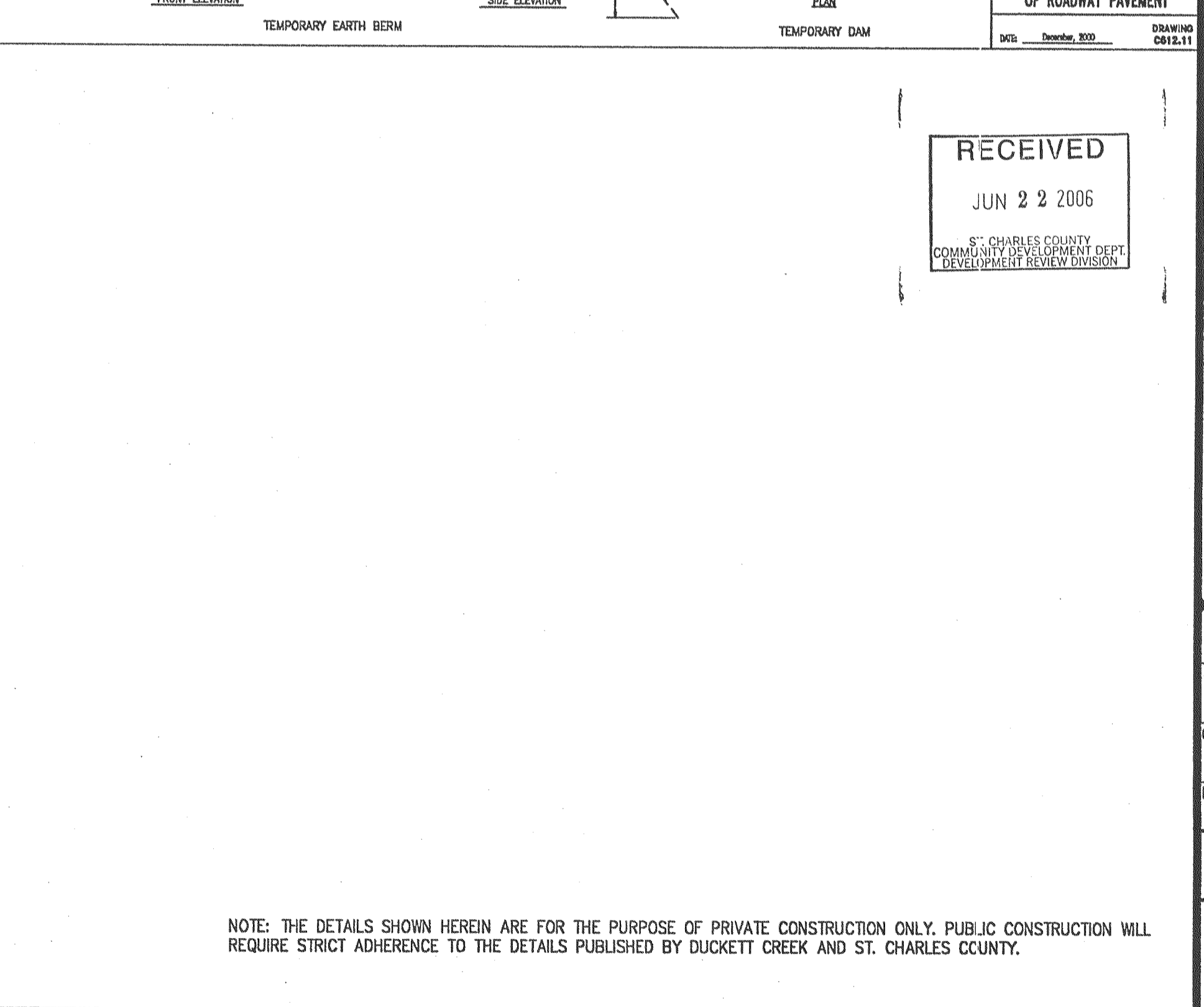
GENERAL NOTES

1. Temporary Barricade Unit shall be installed at all work areas.
2. Temporary Guard Rail shall be installed at all work areas.
3. Temporary Earth Berm shall be installed at all work areas.
4. Temporary Dam shall be installed at all work areas.
5. Temporary Barricade Unit shall be installed at all work areas.
6. Temporary Guard Rail shall be installed at all work areas.
7. Temporary Earth Berm shall be installed at all work areas.
8. Temporary Dam shall be installed at all work areas.
9. Temporary Barricade Unit shall be installed at all work areas.
10. Temporary Guard Rail shall be installed at all work areas.

SAINT CHARLES COUNTY HIGHWAY DEPARTMENT ST. CHARLES, MISSOURI

TREATMENT OF TEMPORARY TERMINATIONS OF ROADWAY PAVEMENT

DATE: December, 2002 DRAWING C904.11



GENERAL NOTES

1. THE NUMBER OF BACKER RODS REQUIRED WILL VARY WITH THE PAVEMENT THICKNESS. BACKER RODS AND FLEXIBLE FOAM FILLER MUST EXTEND THROUGH THE FULL DEPTH OF THE PAVEMENT.
2. JOINT FILLER SHALL BE A FLEXIBLE, NON-ABSORBENT, NON-GASSING, NON-STAINING, NON-SHRINKING MATERIAL, EXTRUDED FROM A CLOSED-CELL POLYMER, ASTM D-5249.
3. JOINT FILLER COMPOSED OF CELLULAR FIBERS, ASTM D-1751, MAY BE USED AT DRIVEWAY, SIDEWALK, AND SEWER INLET AND MANHOLE LOCATIONS.
4. SEE "INTEGRAL CURB DETAIL 'B' AT DRIVEWAYS" FOR EXPANSION JOINT REQUIREMENTS AT DRIVEWAY CONNECTIONS TO THE STREET AND THE GARAGE.

SAINT CHARLES COUNTY HIGHWAY DEPARTMENT ST. CHARLES, MISSOURI

SEWER CONSTRUCTION DETAILS

STREET INLET SUMPS

DATE: June, 2002 DRAWING C904.15

SAINT CHARLES COUNTY HIGHWAY DEPARTMENT ST. CHARLES, MISSOURI

PAVEMENT CONSTRUCTION DETAILS

Type 'A' Expansion Joint

DATE: May, 2002 DRAWING C502.04

NOTE: THE DETAILS SHOWN HEREIN ARE FOR THE PURPOSE OF PRIVATE CONSTRUCTION ONLY. PUBLIC CONSTRUCTION WILL REQUIRE STRICT ADHERENCE TO THE DETAILS PUBLISHED BY DUCKETT CREEK AND ST. CHARLES COUNTY.

REVISIONS

DATE	BY	REVISION
4/28/06	OWNER/COUNTY COMMENTS	
5/19/06	ST. CHARLES CO. DIST. COMMENTS	
6/2/06	DUCKETT CREEK SAN. DIST. COMMENTS	
6/2/06	PHD # REVIEW COMMENTS	
6/27/06	COUNTY COMMENTS	

DEVELOPER/OWNER: THE JONES COMPANY HOMES, L.L.C.
16640 CHESTERFIELD GROVE, SUITE 160
CHESTERFIELD, MO 63005
PHONE: (636) 537-7192

REGISTERED PROFESSIONAL ENGINEER
STATE OF MISSOURI
NO. 000000000
JAMES H. HANCOCK
E-29716

DESIGNED BY: JKW
DRAWN BY: BJ
CHECKED BY: JFH
DATE: 2/2/06
Job Number: 05-340
Sheet Number: C10.8

PRESTON WOODS - PHASE I
IMPROVEMENT PLANS
RHODES LANE
ST. CHARLES, MO. 63366
SITE DETAILS

RECEIVED
JUN 22 2006
SAINT CHARLES COUNTY HIGHWAY DEPARTMENT
PAVEMENT REVIEW DIVISION

planning • engineering • surveying • landscape architecture
Cole and Associates
INCORPORATED
10777 sunset office dr. suite 10
saint louis, missouri 63127
p: 314 984 9887 f: 314 984 0587