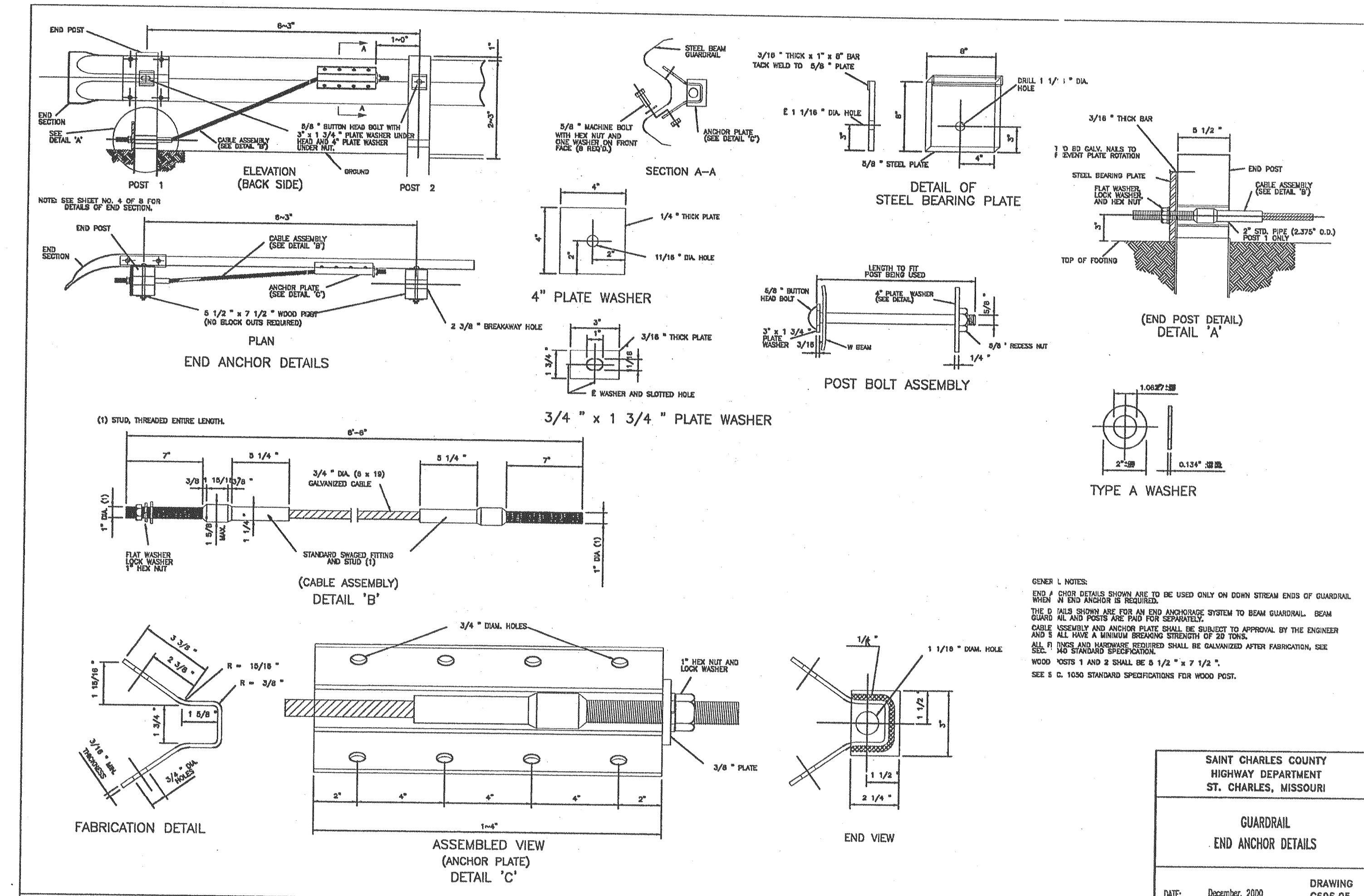


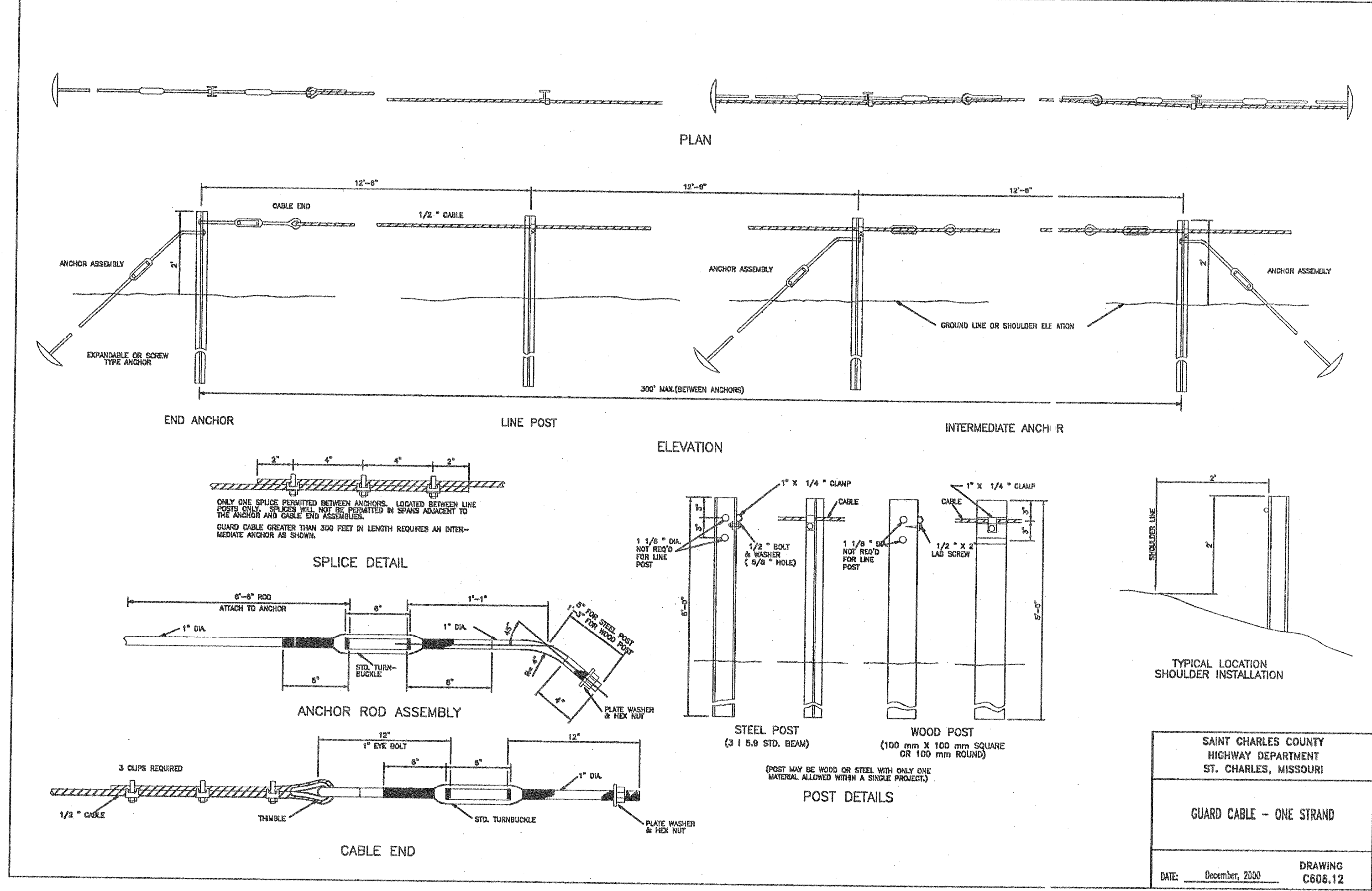
USER: M:\night TAB SITE DETAIL SHEET 10.10
 DATE: Jun 21, 2006 11:43am
 DRAWING: S:\WORKS\2006\06-340\US_C606\US_C606_DETAILS.dwg



SAINT CHARLES COUNTY
 HIGHWAY DEPARTMENT
 ST. CHARLES, MISSOURI

GUARDRAIL
 END ANCHOR DETAILS

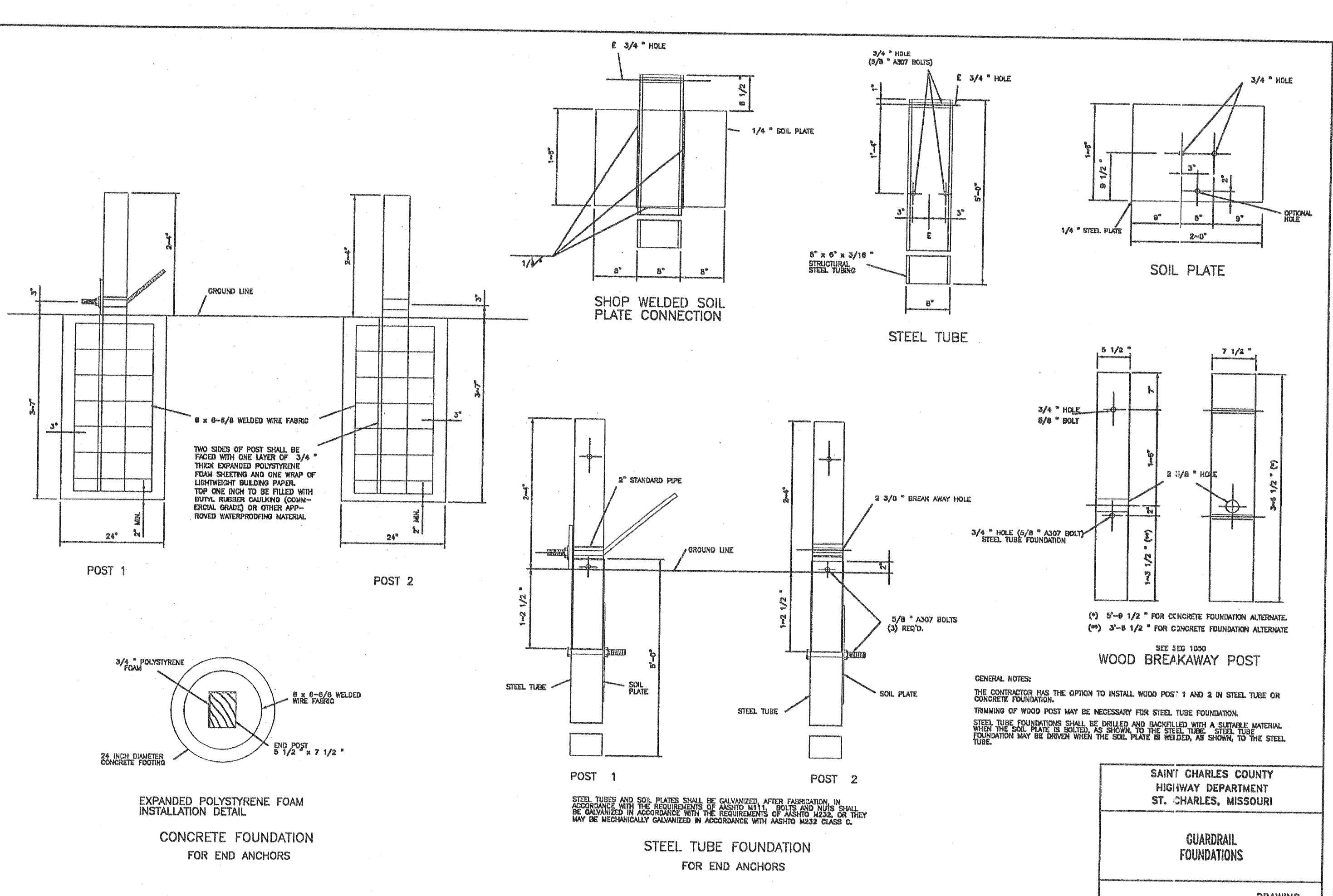
DATE: December, 2000 DRAWING: C606.05



SAINT CHARLES COUNTY
 HIGHWAY DEPARTMENT
 ST. CHARLES, MISSOURI

GUARD CABLE - ONE STRAND

DATE: December, 2000 DRAWING: C606.12



SAINT CHARLES COUNTY
 HIGHWAY DEPARTMENT
 ST. CHARLES, MISSOURI

GUARDRAIL
 FOUNDATIONS

DATE: December, 2000 DRAWING: C606.06

REVISIONS	
DATE	DESCRIPTION
6/27/06	OWNER COUNTY COMMENTS
6/27/06	DUCKETT CREEK SANIT COMMENTS
6/27/06	FINED 12 REVIEW COMMENTS
6/27/06	COUNTY COMMENTS

DEVELOPER/OWNER:
 THE JONES COMPANY HOMES, L.L.C.
 16640 CHESTERFIELD GROVE, SUITE 160
 CHESTERFIELD, MO 63005
 PHONE: (636) 537-7192

SAINT CHARLES COUNTY
 HIGHWAY DEPARTMENT
 ST. CHARLES, MISSOURI

GUARDRAIL
 FOUNDATIONS

DATE: December, 2000 DRAWING: C606.06

PRESTON WOODS - PHASE I
 IMPROVEMENT PLANS

RHODES LANE
 ST. CHARLES, MO. 63366

SITE DETAILS

RECEIVED
 JUN 22 2006
 ST. CHARLES COUNTY
 COMMUNITY DEVELOPMENT DEPT.
 DEVELOPMENT REVIEW DIVISION

planning • engineering • surveying • landscape architecture

Cole
 and ASSOCIATES
 INCORPORATED

10777 sunset office dr. suite 10
 saint louis, missouri 63127
 p. 314.984.9887 f. 314.984.0587

DESIGNED BY: JKW
 DRAWN BY: BJ
 CHECKED BY: JFH
 DATE: 2/2/06
 Job Number: 05-340
 Sheet Number: C10.10

NOTE: THE DETAILS SHOWN HEREIN ARE FOR THE PURPOSE OF PRIVATE CONSTRUCTION ONLY. PUBLIC CONSTRUCTION WILL REQUIRE STRICT ADHERENCE TO THE DETAILS PUBLISHED BY DUCKETT CREEK AND ST. CHARLES COUNTY.