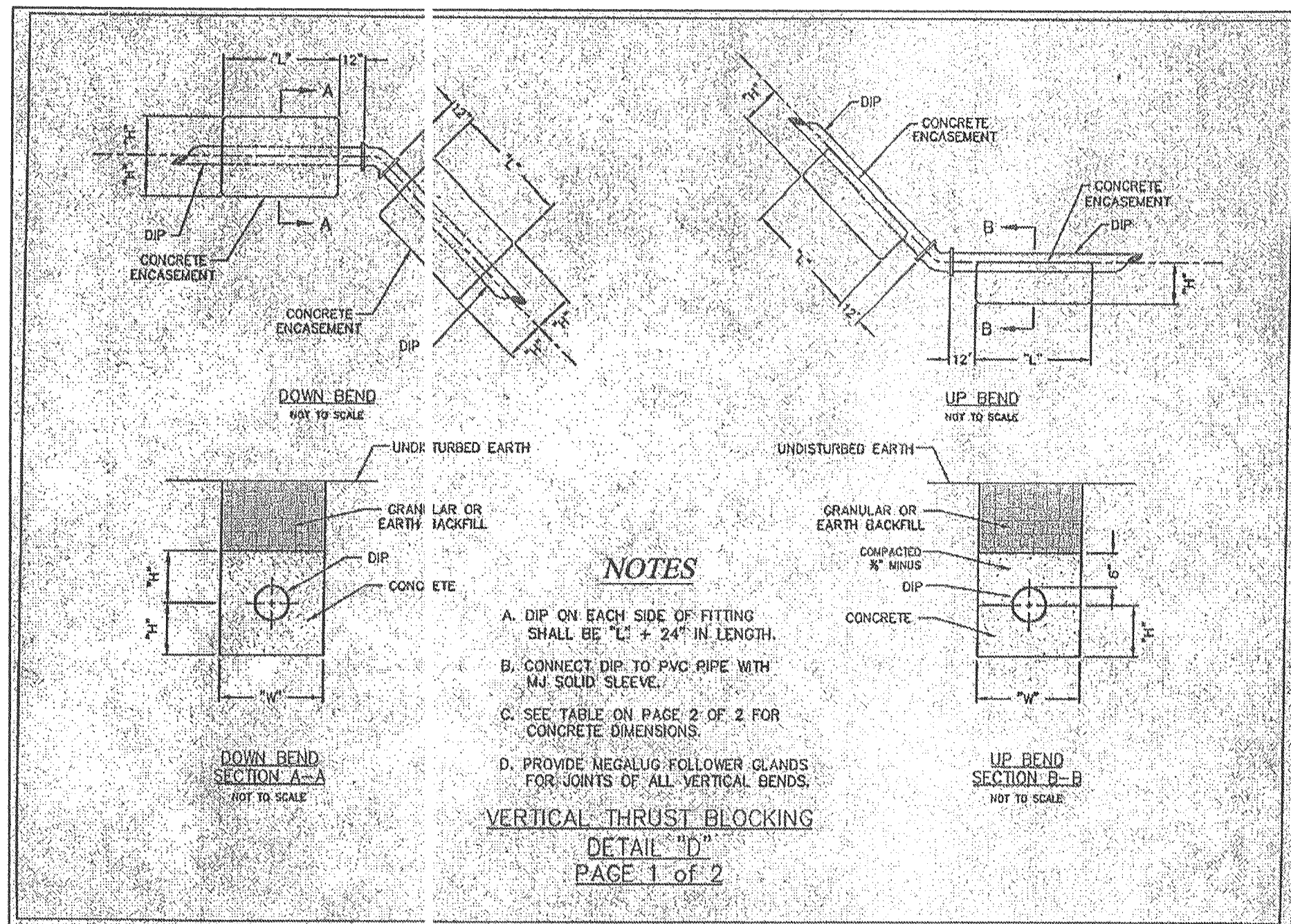
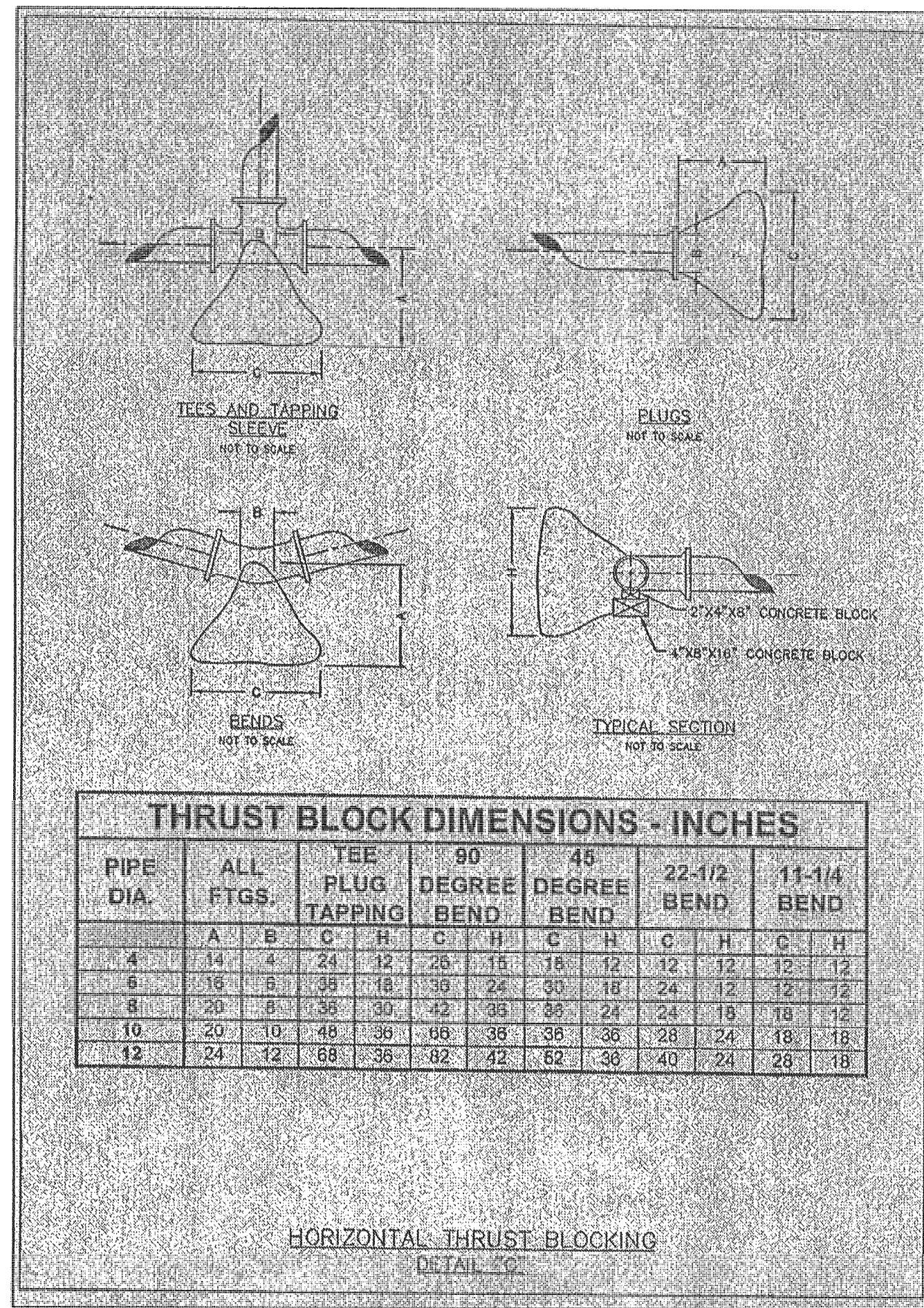


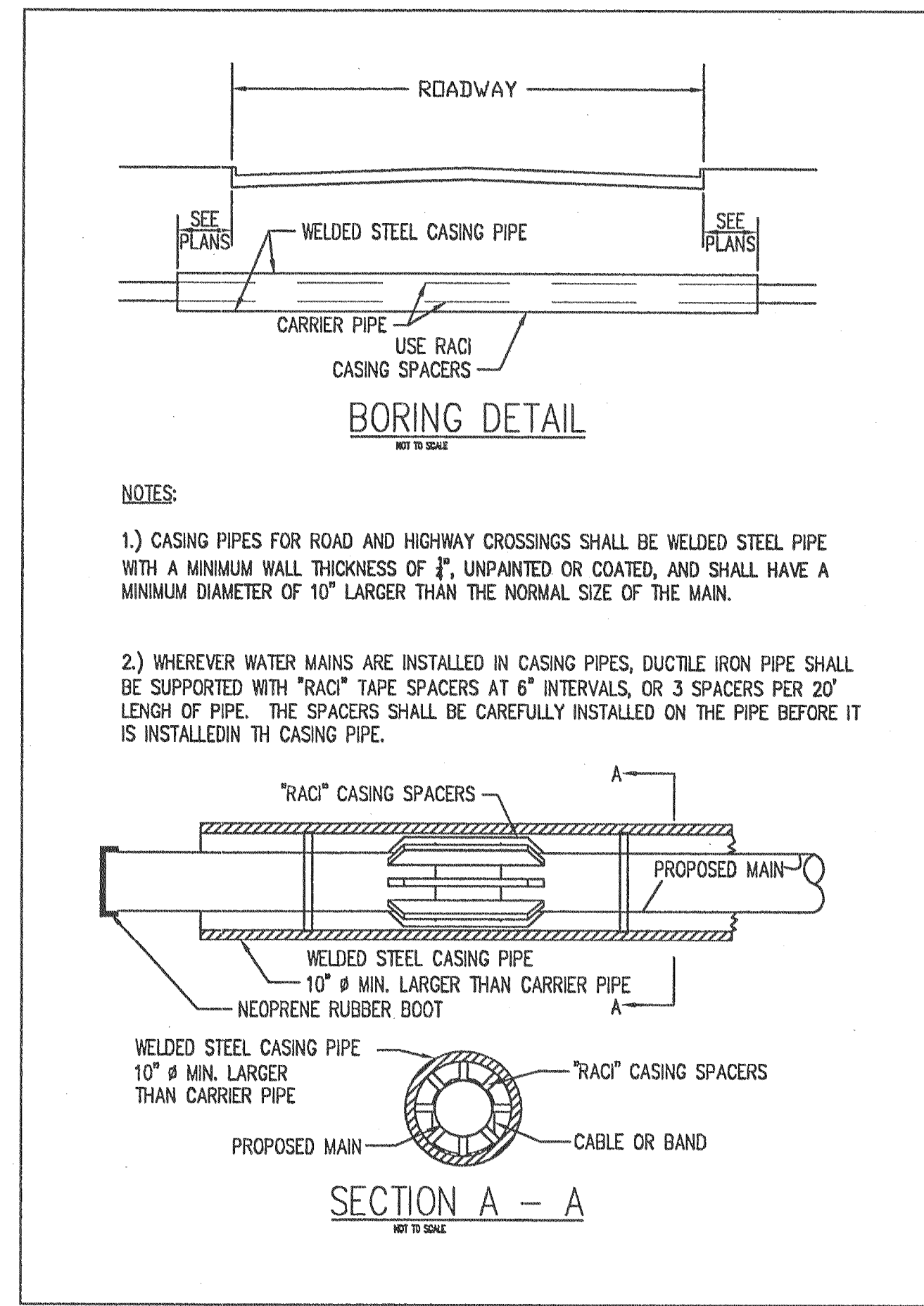
USER: M:\041 TAB: WATER DETAIL 10.13
 DATE: Jun 21, 2006 - 1:44pm
 DRAWING: S:\005\0052005\05-340\LD5-05-340\LD5-05-340\Wg\IMPROVEMENT PLANS\05-340\LD5-05-340\LD5-05-340\DETAILS.DWG



VERTICAL THRUST BLOCKING
DETAIL "D"
PAGE 2 of 2

PIPE SIZE	DEGREE BEND	DOWN BENDS			UP BENDS		
		W	H	L	W	H	L
4"	11-1/4	18	12	18	12	12	12
	22-1/2	18	18	24	12	12	12
	45	18	18	30	12	12	18
6"	11-1/4	24	18	18	12	12	12
	22-1/2	24	18	24	12	12	12
	45	24	18	48	12	12	18
8"	11-1/4	24	18	24	12	12	18
	22-1/2	24	18	42	12	12	24
	45	24	18	48	18	12	24
10"	11-1/4	30	24	24	18	18	18
	22-1/2	30	24	42	18	18	24
	45	30	24	72	18	18	36
12"	11-1/4	30	24	30	18	18	18
	22-1/2	30	24	54	18	18	30
	45	30	36	72	24	18	36

DIMENSIONS FOR VERTICAL BENDS
(IN INCHES)
DETAIL "D"
PAGE 2 of 2



RECEIVED
 JUN 22 2006
 ST. CHARLES COUNTY
 COMMUNITY DEVELOPMENT DEPT.
 DEVELOPMENT REVIEW DIVISION

REVISIONS

DATE	DESC.	OWNER/COUNTY COMMENTS
4/28/06	A	ST. CHARLES CO. REVIEW COMMENTS
5/18/06	A	BUCKETT CREEK SAN DIST COMMENTS
6/9/06	A	ST. CHARLES COUNTY COMMENTS
6/21/06	A	ST. CHARLES COUNTY COMMENTS

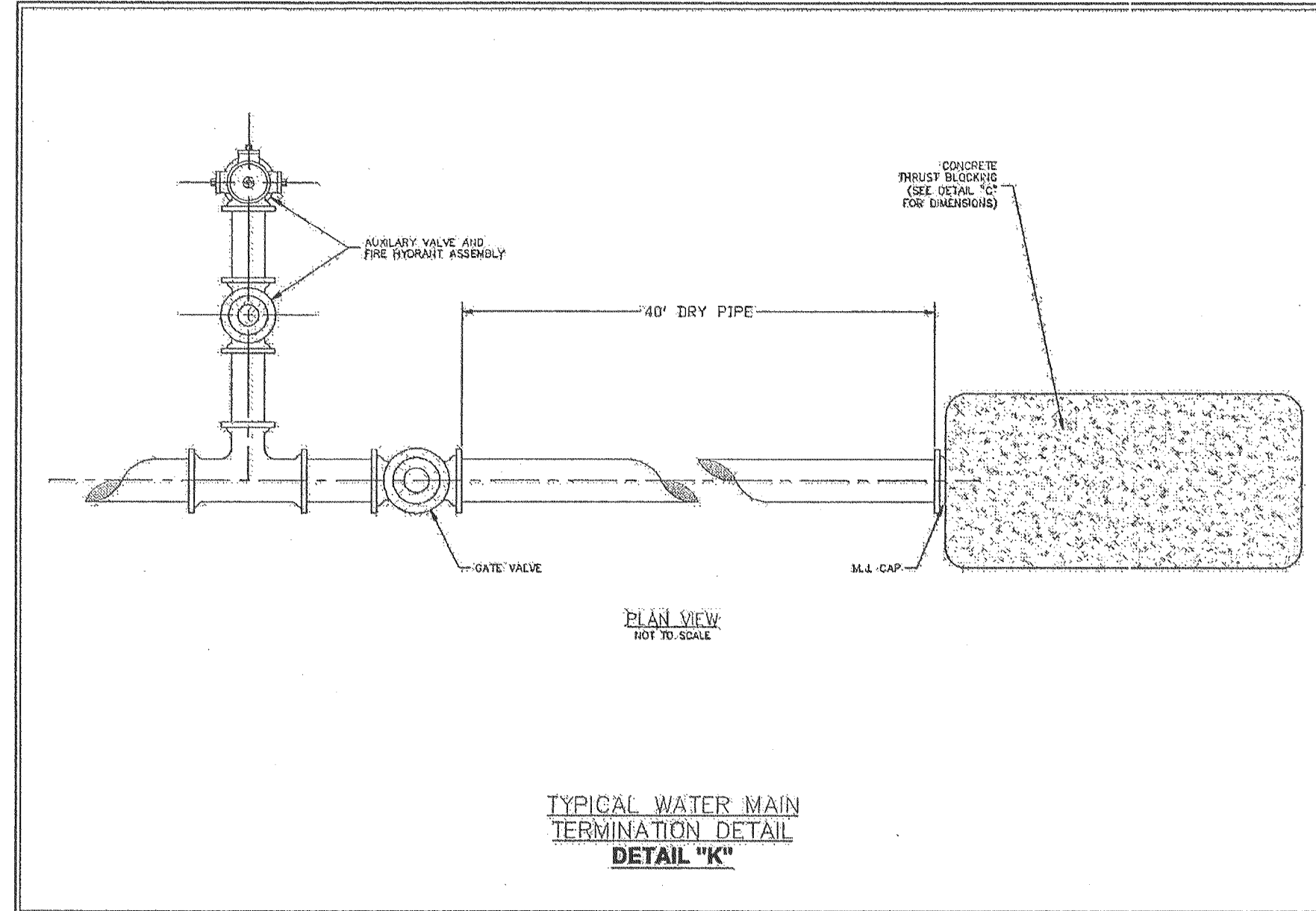
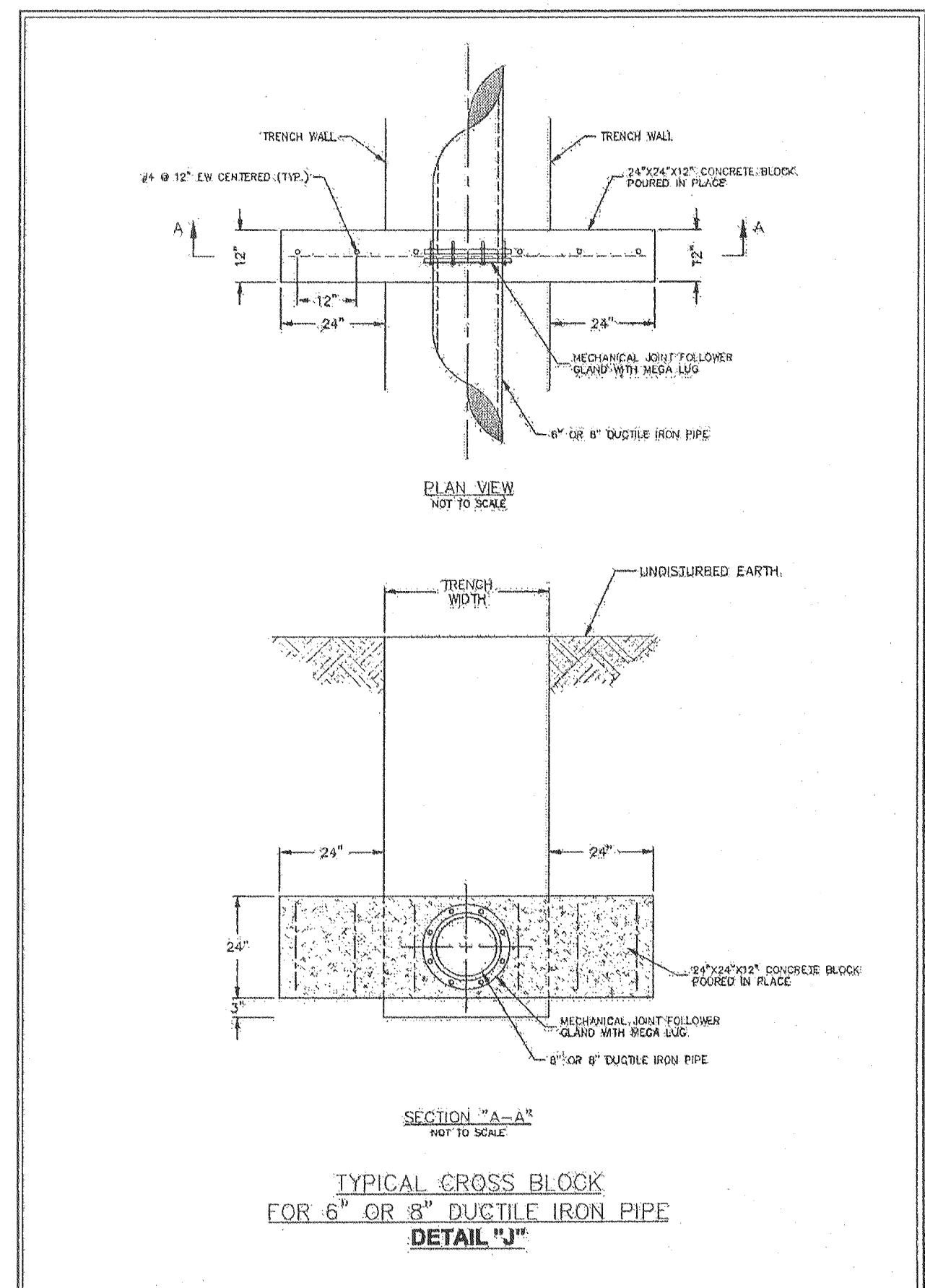
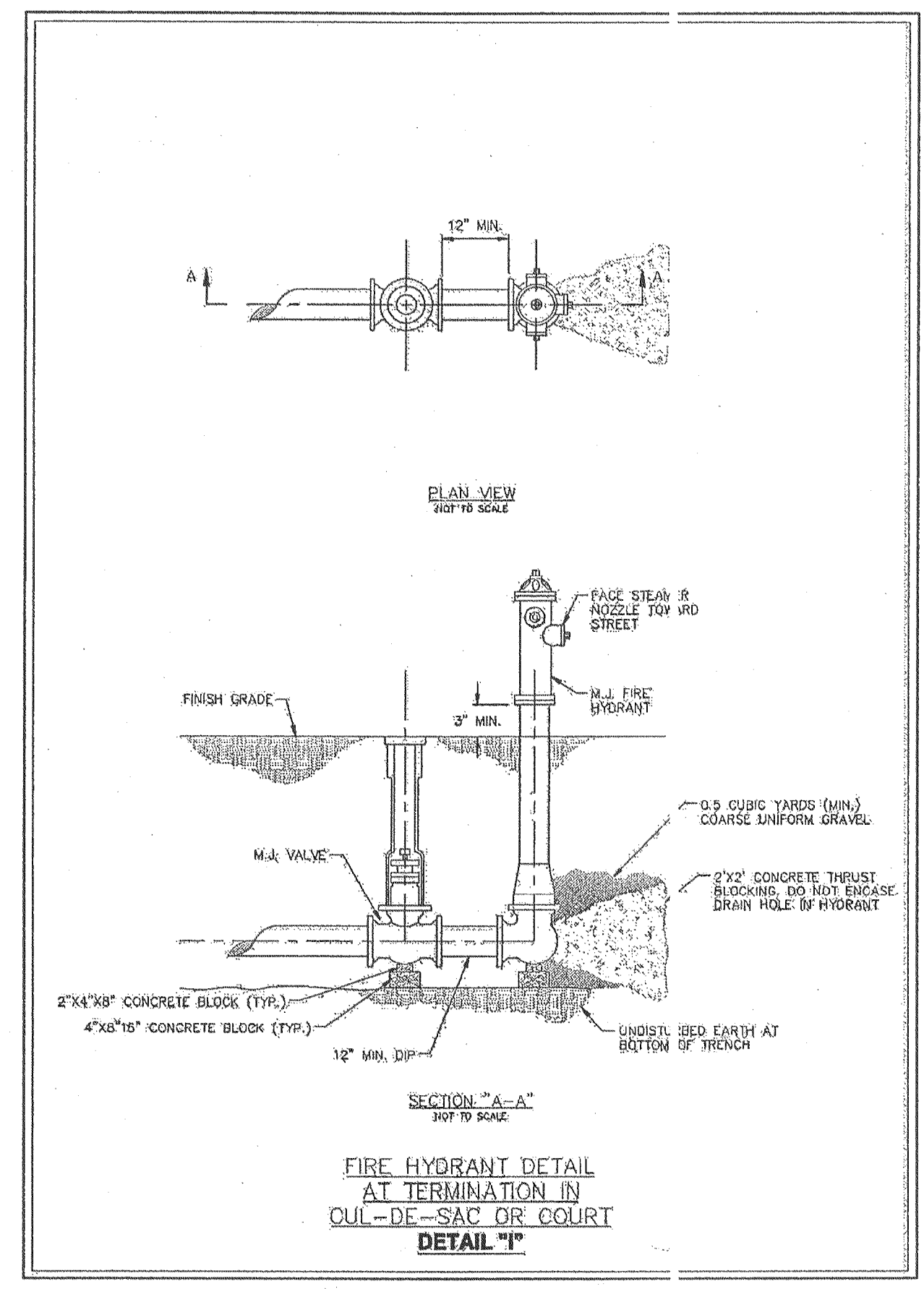
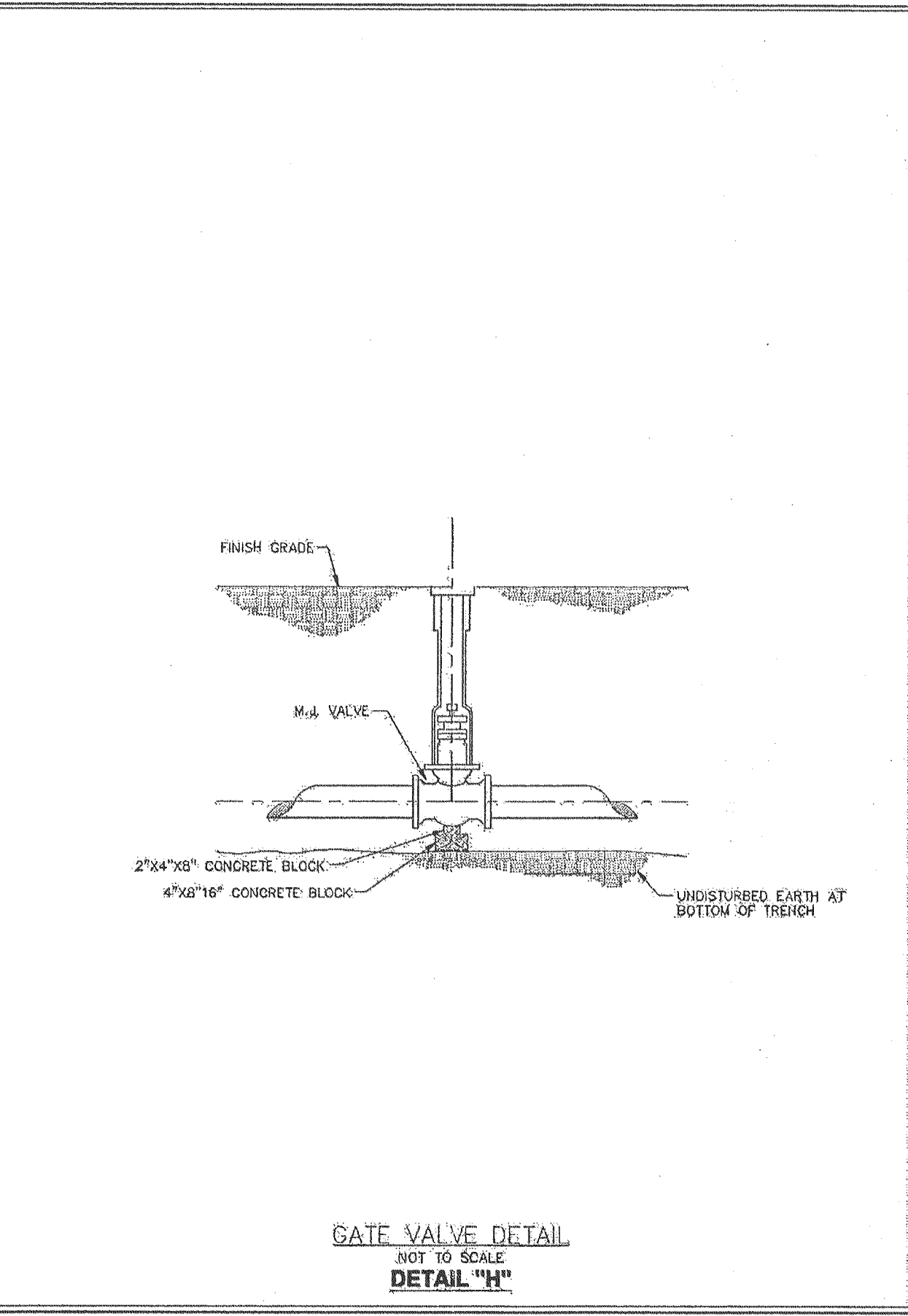
DEVELOPER/OWNER:
THE LONES COMPANY HOMES, L.L.C.
 16640 CHESTERFIELD GROVE, SUITE 160
 CHESTERFIELD, MO 63005
 PHONE: (636) 637-7192

THE PROFESSIONAL ENGINEER'S SEAL AND PERSONAL SEAL APPEAR HEREON AS A CONDITION OF CONTRACT. THE PROFESSIONAL ENGINEER'S SEAL IS REQUIRED TO BE PLACED ON THIS DRAWING. THE PROFESSIONAL ENGINEER'S SEAL IS REQUIRED TO BE PLACED ON THIS DRAWING. THE PROFESSIONAL ENGINEER'S SEAL IS REQUIRED TO BE PLACED ON THIS DRAWING.

ST. CHARLES COUNTY
 COMMUNITY DEVELOPMENT DEPT.
 DEVELOPMENT REVIEW DIVISION

PRESTON WOODS - PHASE I
 IMPROVEMENT PLANS
 WATER DETAILS

RHODES LANE
 ST. CHARLES, MO. 63366



planning • engineering • surveying • landscape architecture

Cole and Associates Incorporated

10777 sunset office dr. suite 10
 saint louis, missouri 63127
 p: 314 984 9887 f: 314 984 0887

DESIGNED BY: JKW
 DRAWN BY: BJ
 CHECKED BY: JFH
 DATE: 2/2/06
 Job Number: 05-340
 Sheet Number: C10.13