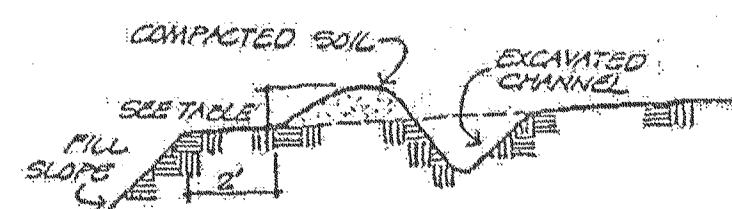


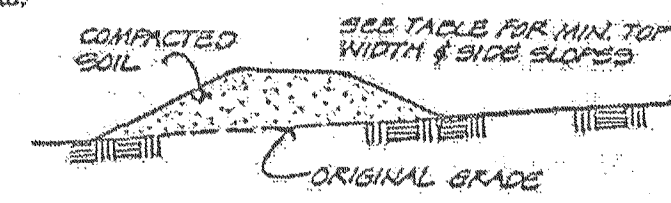
APPENDIX B. DIVERSIONS
For Urban Development Sites

**Outlets for diversions must be stable. Stable outlets consist of grass waterways, earthen channels with capacity adequate to prevent gully erosion, grade stabilization structures or other practices as approved by the designated official.

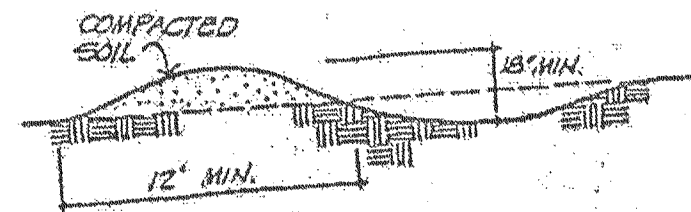
Combination Diversion
Used at the top of a fill slope.



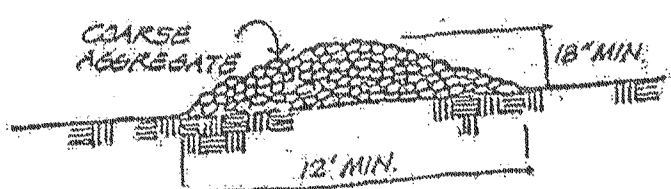
Earth Ridge Diversion
Used around the perimeter of a construction site.



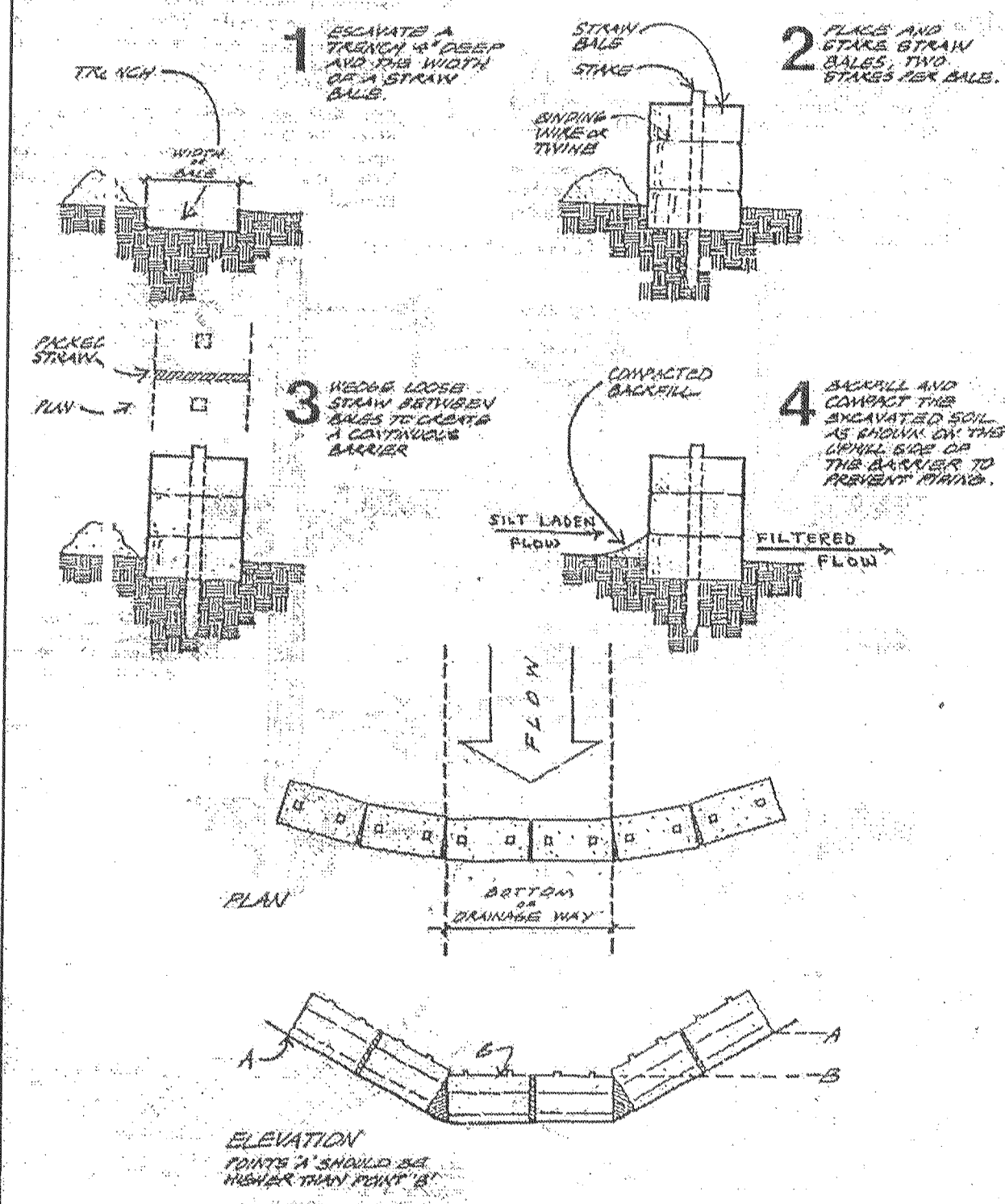
Combination Diversion
General use.



Gravel Ridge Diversion
General use.



APPENDIX C. STRAW BALE BARRIERS
For Urban Development Sites

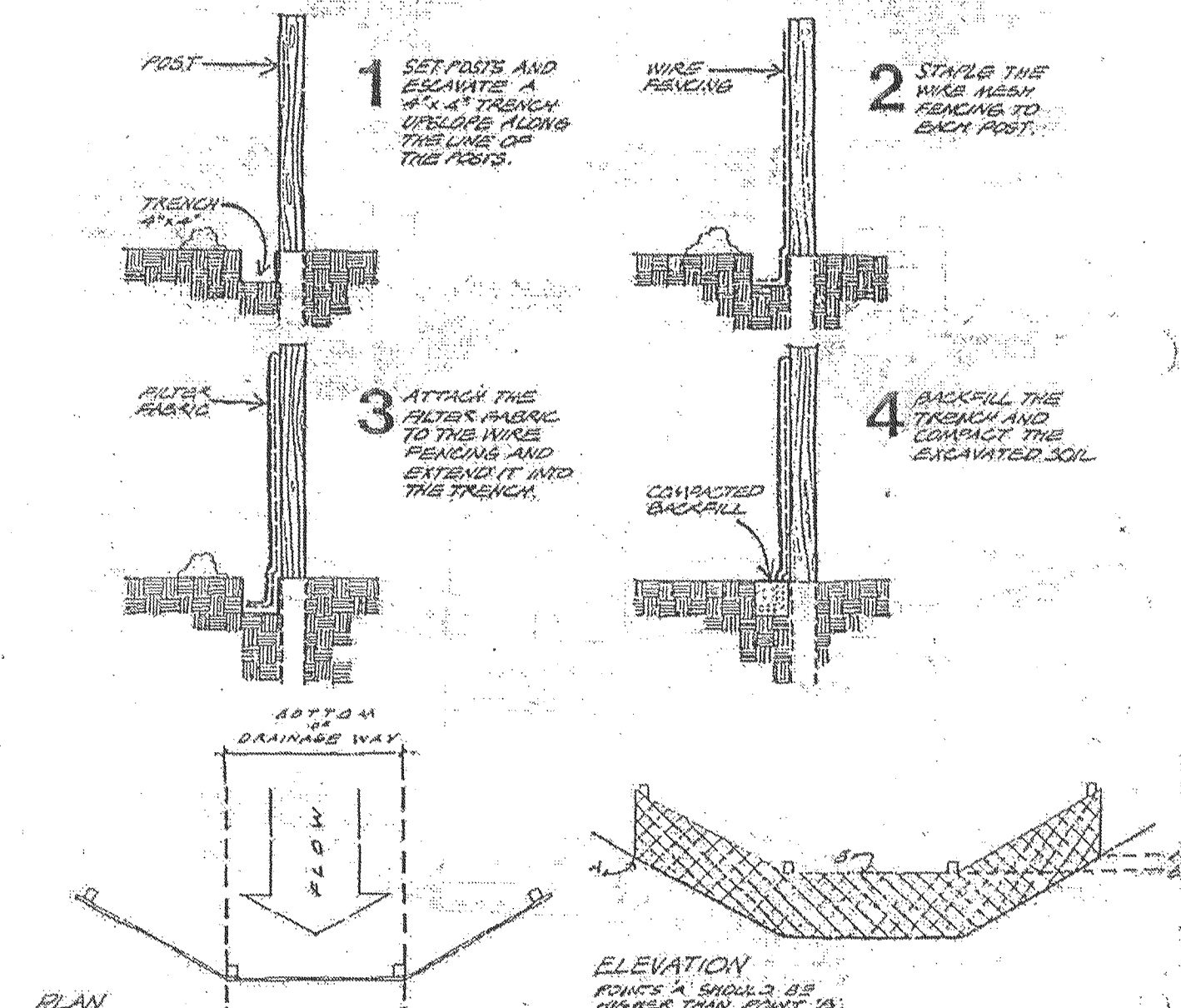


Placement and Construction of a Straw Bale Barrier. 683 Supp. #7, 9/99

APPENDIX D. SYNTHETIC FILTER BARRIERS

Maintenance

- Filter barriers shall be inspected immediately after each rainfall and at least daily during prolonged rainfalls. Any required repairs shall be made immediately.
- Should the fabric decompose or become ineffective prior to the end of the expected usable life and the barrier still be necessary, the fabric shall be replaced promptly.
- Sediment deposits should be removed after each storm event. They must be removed when deposits reach approximately half the height of the barrier.
- Any sediment deposits remaining in place after the silt fence or filter barrier is no longer required shall be dressed to conform with the existing grade, prepared and seeded.



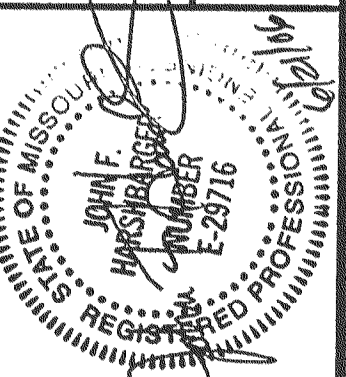
Placement and Construction of a Synthetic Filter Barrier. 684 Supp. #7, 9/99

RECEIVED
JUN 22 2006

ST. CHARLES COUNTY
COMMUNITY DEVELOPMENT DEPT.
DEVELOPMENT REVIEW DIVISION

REVISIONS	
DATE	DESCRIPTION
4/18/06	BY COUNTY COMMENTS
5/19/06	BY ST. CHARLES CO. REVIEW COMMENTS
6/5/06	BY DUKETT CREEK SAN DIST COMMENTS
6/5/06	BY PUSD #2 REVIEW COMMENTS
6/27/06	BY COUNTY COMMENTS

DEVELOPER/OWNER:
THE JONES COMPANY HOMES, L.L.C.
16640 CHESTERFIELD GROVE, SUITE 160
CHESTERFIELD, MO 63005
PHONE: (636) 537-7192



PRESTON WOODS - PHASE I
IMPROVEMENT PLANS
RHODES LANE
ST. CHARLES, MO. 63366
EROSION CONTROL DETAILS

planning • engineering • surveying • landscape architecture
Cole
and ASSOCIATES
INCORPORATED
10777 sunset office dr. suite 10
saint louis, missouri 63127
p: 314 984 9887 f: 314 984 0587

DESIGNED BY: JKW
DRAWN BY: BJ
CHECKED BY: JFH
DATE: 2/2/06
Job Number: 05-340
Sheet Number: C10.15

