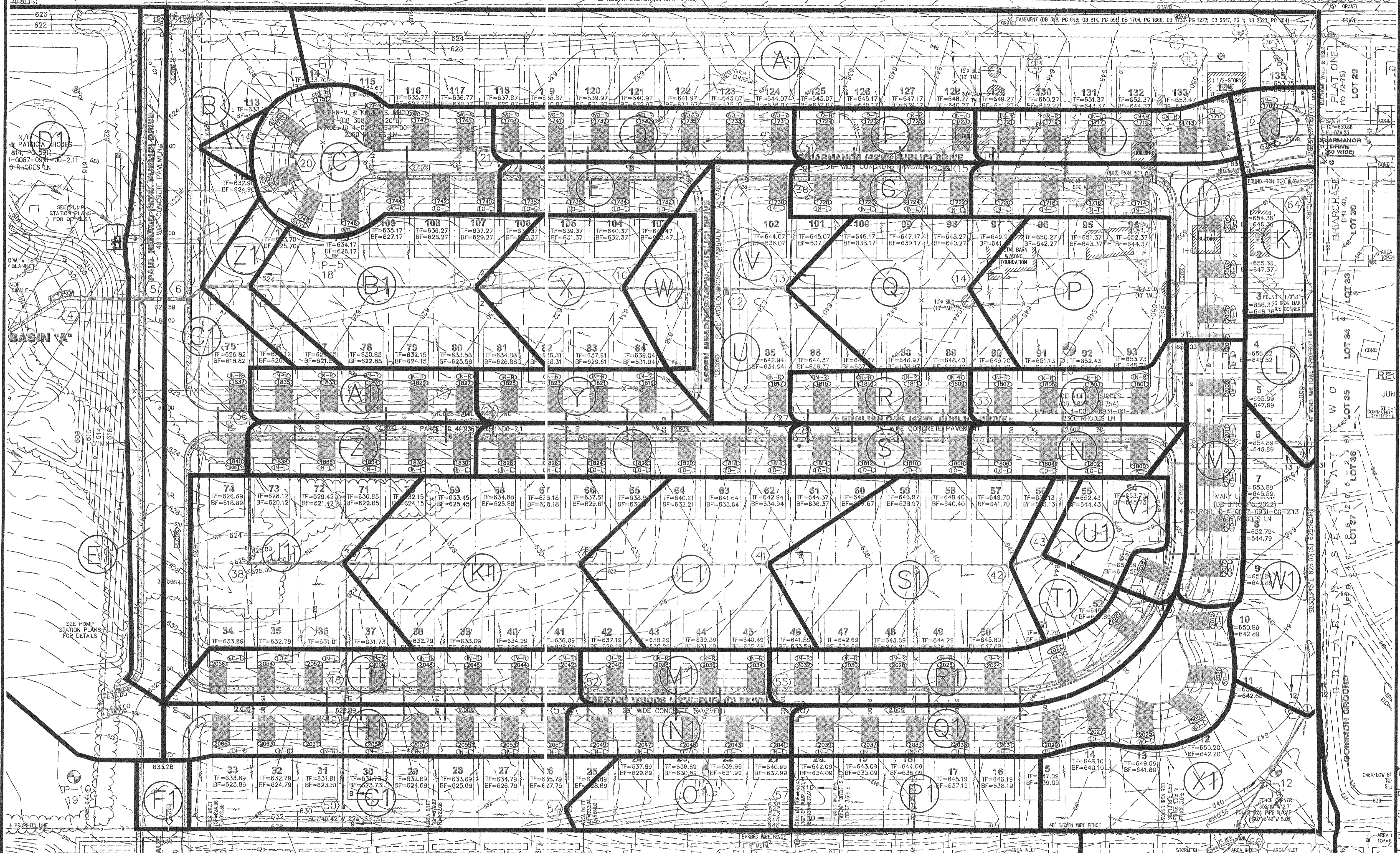




(IN FEET)
1 inch = 50 ft.

R. STEPHEN & CATHERINE M. BARNETT
(DB 1874, PG 123)
PARCEL ID 4-0087-0931-00-7.1

JOANEE GRIFFIN & GARY E. KOPADT REVOCABLE TRUSTS
(DB 2354, PG 724)
PARCEL ID 4-0067-0931-00-3

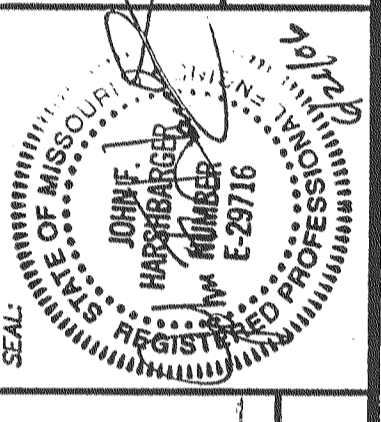


DRAINAGE AREA MAR 2010 NOT FOR CONSTRUCTION
SEE SHEET C.10.8 FOR DETENTION CROSS SECTIONS

REVISIONS

DATE	BY	REVISION
4/29/06	BJ	OWNER/COUNTY COMMENTS
6/5/06	BJ	DUCKETT CREEK SAN DIST COMMENTS
6/5/06	BJ	PKWY 82 SAN DIST COMMENTS
6/27/06	BJ	COUNTY COMMENTS

DEVELOPER/OWNER:
THE JONES COMPANY HOMES, L.L.C.
16640 CHESTERFIELD GROVE, SUITE 160
CHESTERFIELD, MO 63005
PHONE: (636) 537-7192



RECEIVED
JUN 2 2006
ST. CHARLES COMMUNITY DEVELOPMENT DEPARTMENT

PRESTON WOODS - PHASE II
IMPROVEMENT PLANS

PHODES LANE
ST. CHARLES, MO. 63366

planning • engineering • surveying • landscape architecture

Cole and Associates Incorporated
10777 sunset office dr. suite 10
saint louis, missouri 63127
p. 314 984 9897 f. 314 984 0587

DESIGNED BY: JKW
DRAWN BY: BJ
CHECKED BY: JFH
DATE: 2/2/06
Job Number: 05-340
Sheet Number: C11.1

USER: Manjit, TAB: C11.1, 4657
DRAWING: S:\0505\0505\05-340\05-340\PHASE II\IMPROVEMENT PLANS\PLAN_C10.DWG
DRAWING: S:\0505\0505\05-340\05-340\PHASE II\IMPROVEMENT PLANS\PLAN_C10.DWG