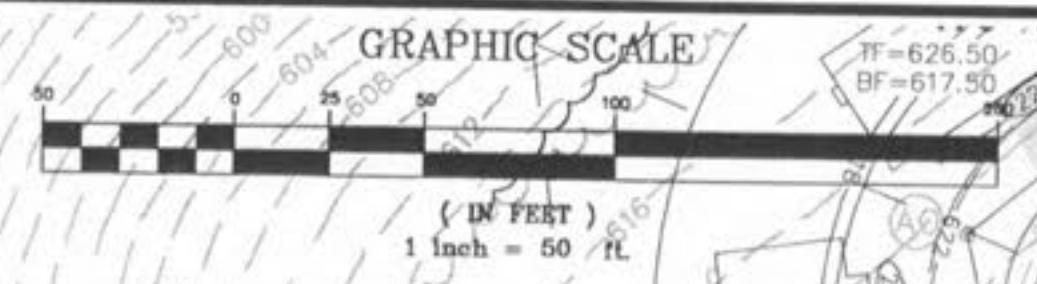
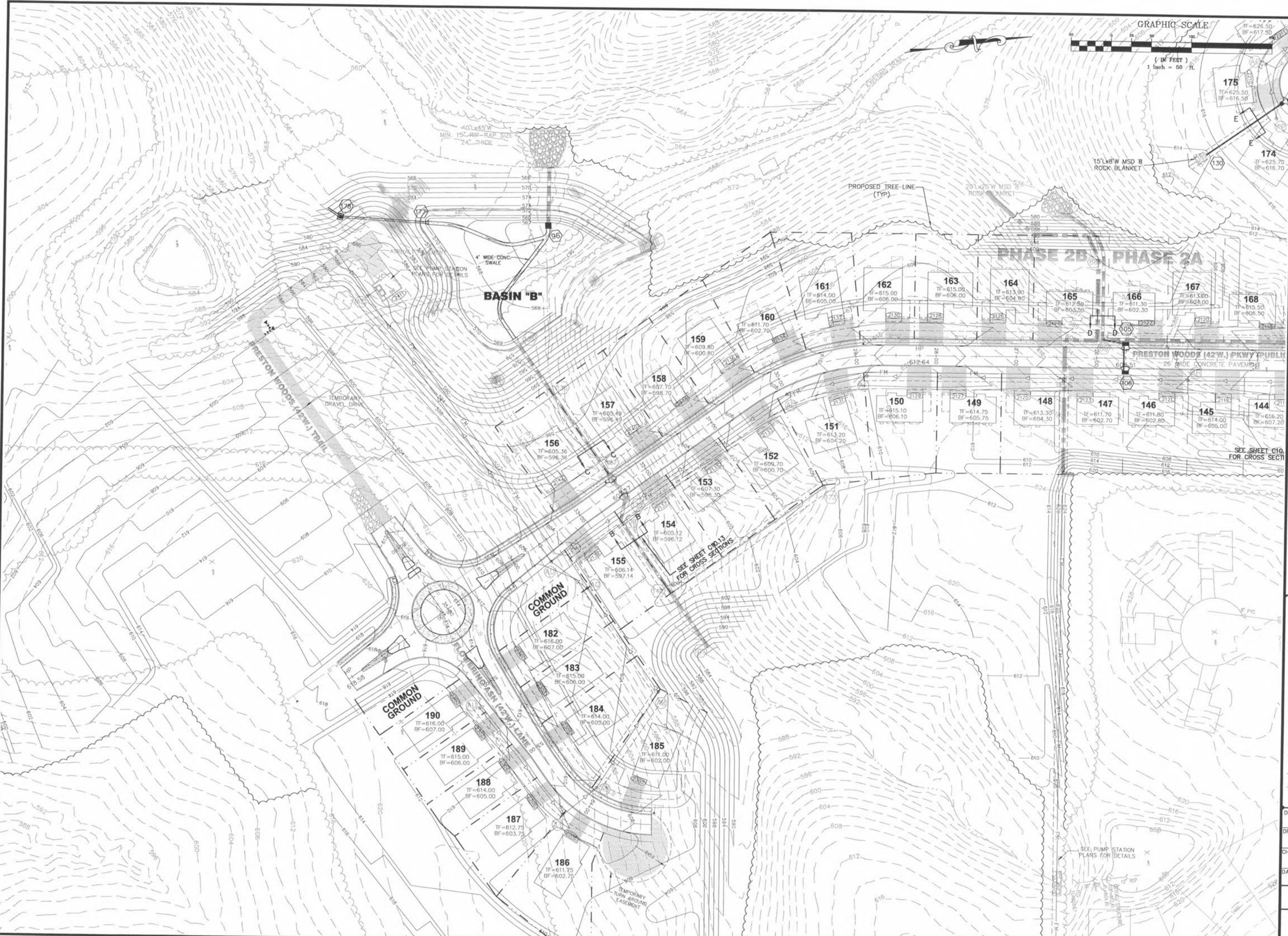


USER: j:\milton TAB: C5.2
 DATE: Oct 23, 2007 - 12:12pm
 DRAWING: s:\projects\2007\07-0041\c07-0041.dwg IMPROVEMENT PLANS PHASE 2\0_IP_LAN_C5.0 STORM SEWER PLAN.dwg



REVISIONS

NO.	DATE	BY	DESCRIPTION
1	9/14/07	JKW	ISSUE FOR PERMITS
2	9/14/07	JKW	OWNER COMMENTS
3	9/14/07	JKW	CITY OF FALLON COMMENTS
4	10/23/07	JKW	CITY OF FALLON COMMENTS
5	10/23/07	JKW	CITY OF FALLON COMMENTS

DEVELOPER/OWNER:
THE JONES COMPANY HOMES, L.L.C.
 16640 CHESTERFIELD GROVE, SUITE 200
 CHESTERFIELD, MO 63005
 PHONE: (636) 537-7192

THE PROFESSIONAL ENGINEER'S SIGNATURE AND PERSONAL SEAL ARE REQUIRED. THE PROFESSIONAL ENGINEER'S SEAL MUST BE PLACED ON THIS PLAN. THE ENGINEER ASSUMES RESPONSIBILITY ONLY FOR WHAT APPEARS ON THIS PLAN, AND DOES NOT ASSUME RESPONSIBILITY FOR THE ACCURACY OF THE DATA OR THE INFORMATION PROVIDED BY THE CLIENT. THE ENGINEER'S SIGNATURE AND SEAL ARE REQUIRED FOR ALL OTHER PLANS. SPECIFICATIONS, ESTIMATES, REPORTS, AND OTHER DOCUMENTS FOR THIS PROJECT SHALL BE KEPT BY THE ENGINEER'S FIRM. ANY PART OF THE PROJECT TO WHICH THIS PAGE REFERS.



PRESTON WOODS - PHASE II
 IMPROVEMENT PLANS
 PRESTON WOODS LANE
 OF FALLON, MO. 63366
STORM SEWER PLAN

planning • engineering • surveying • landscape architecture
Cole
 and ASSOCIATES
 INCORPORATED
 10777 sunset office dr.
 saint louis, missouri 63127
 p: 314 984 9887 f: 314 984 0587

DESIGNED BY: JKW
 DRAWN BY: KDK
 CHECKED BY: JFH
 DATE: 6/14/07
 Job Number: 07-0041
 Sheet Number: C5.2