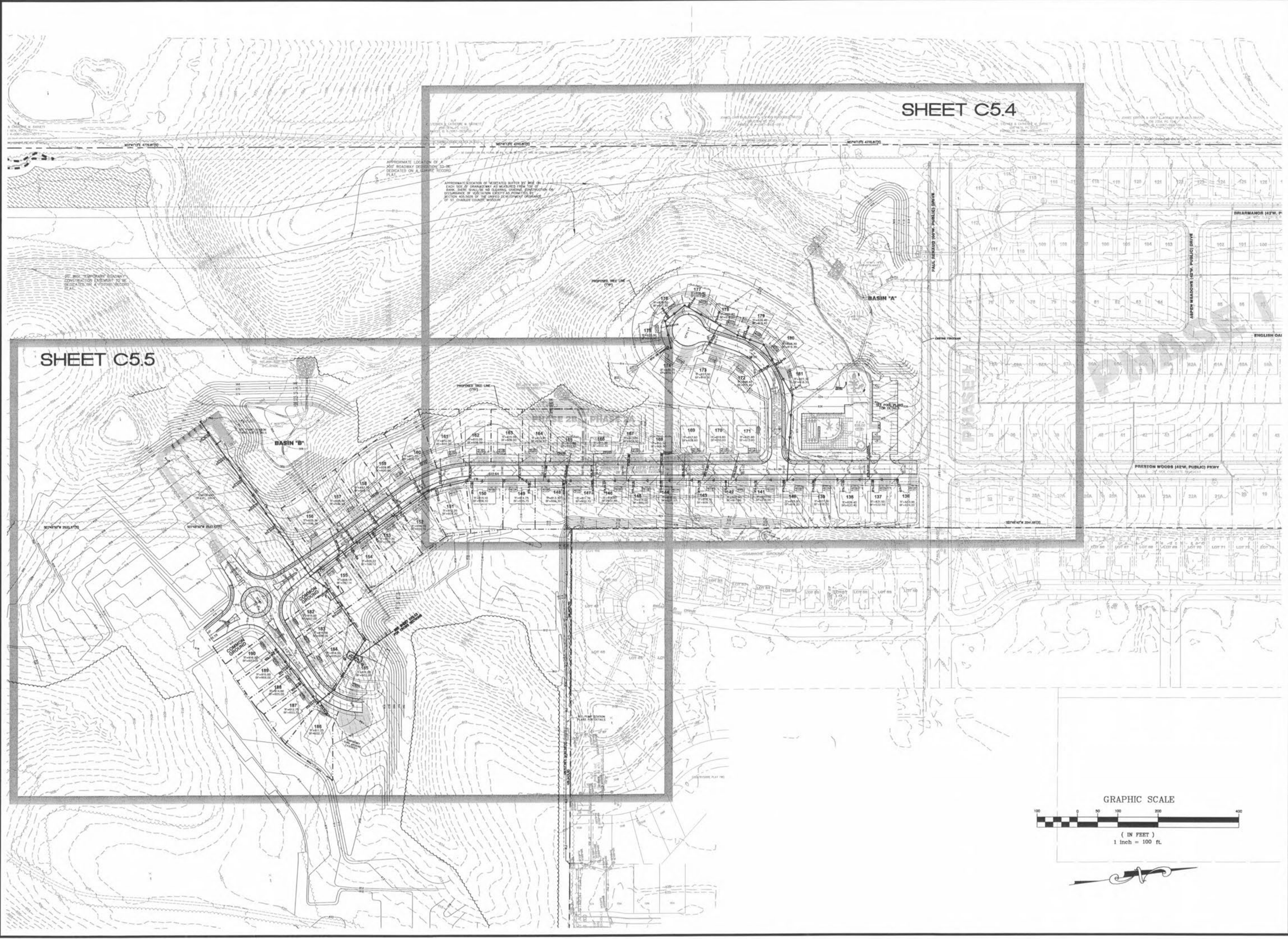


USER: Mison TAB: C5.3
 DATE: Oct 23, 2007 12:12pm
 DRAWING: S:\CBS\Jobs\2007\07-0041\007-0041.dwg IMPROVEMENT PLANS PHASE 2\0_IPIN_C5.3_SANITARY_PLAN.dwg



SHEET C5.4

SHEET C5.5

DATE	ISSUE	REVISIONS
8/24/07	OWNER/PM/SD/CD/DUCKETT CREEK	
9/14/07	OWNER COMMENTS	
9/14/07	DUCKETT CREEK SANITARY DISTRICT	
10/19/07	CITY OF FALLON COMMENTS	
10/23/07	CITY OF FALLON COMMENTS	

DEVELOPER/OWNER:
THE JONES COMPANY HOMES, L.L.C.
 16640 CHESTERFIELD GROVE, SUITE 200
 CHESTERFIELD, MO 63005
 PHONE: (636) 537-7192

THE PROFESSIONAL ENGINEER'S SIGNATURE AND PERSONAL SEAL ARE REQUIRED. THE PROFESSIONAL ENGINEER SHALL BE RESPONSIBLE FOR THE DESIGN AND CONSTRUCTION OF THE PROJECT. THE PROFESSIONAL ENGINEER SHALL BE RESPONSIBLE FOR THE DESIGN AND CONSTRUCTION OF THE PROJECT. THE PROFESSIONAL ENGINEER SHALL BE RESPONSIBLE FOR THE DESIGN AND CONSTRUCTION OF THE PROJECT.



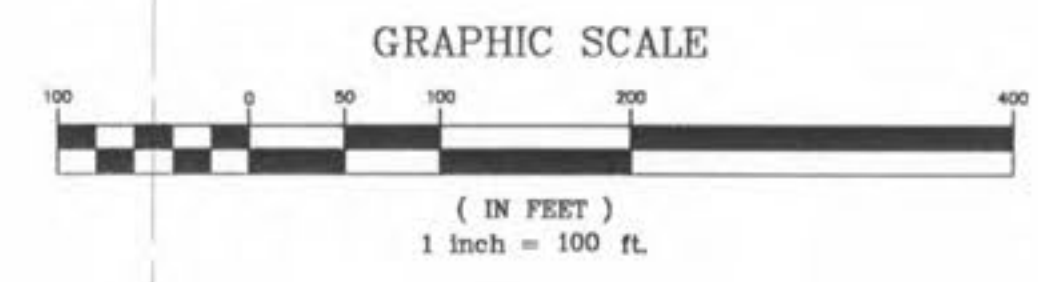
PRESTON WOODS - PHASE II
 IMPROVEMENT PLANS
 PRESTON WOODS LANE
 O'FALLON, MO. 63366

SANITARY SEWER PLAN INDEX

planning • engineering • surveying • landscape architecture

Cole
and ASSOCIATES
 INCORPORATED

10777 sunset office dr.
 saint louis, missouri 63127
 p. 314 984 9887 f. 314 984 0887



DESIGNED BY: JKW
 DRAWN BY: KDK
 CHECKED BY: JFH
 DATE: 6/14/07
 Job Number: 07-0041
 Sheet Number: C5.3