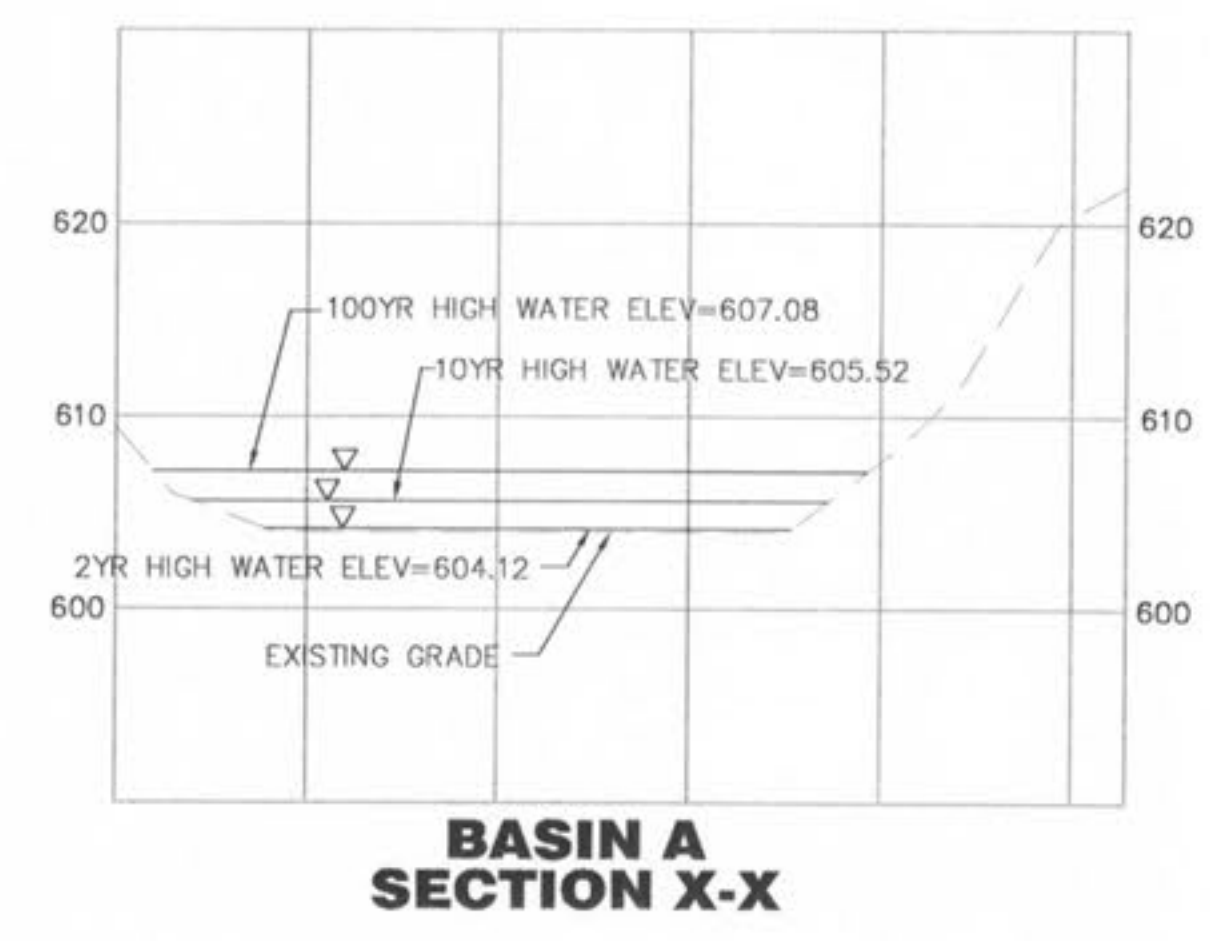
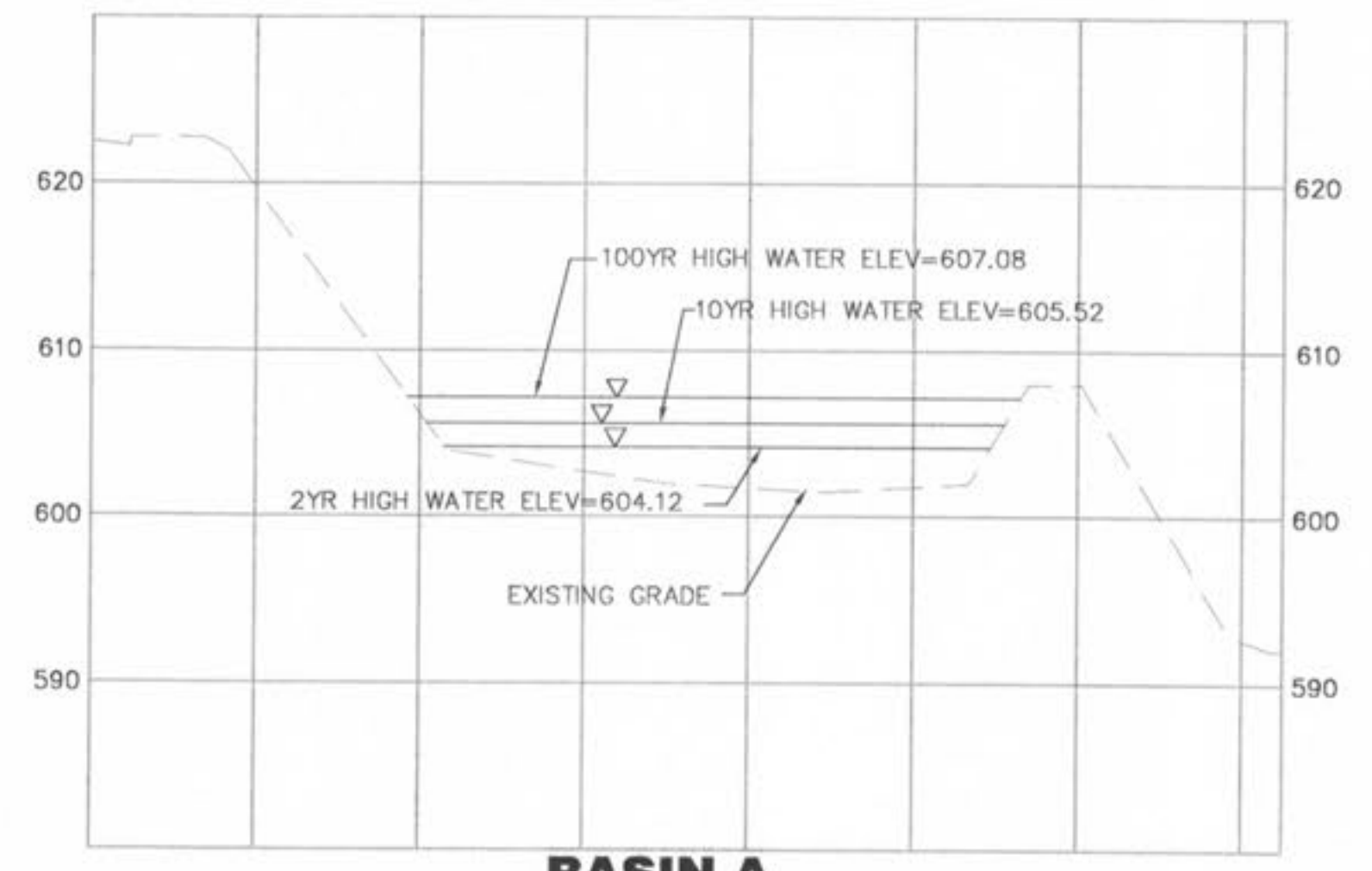


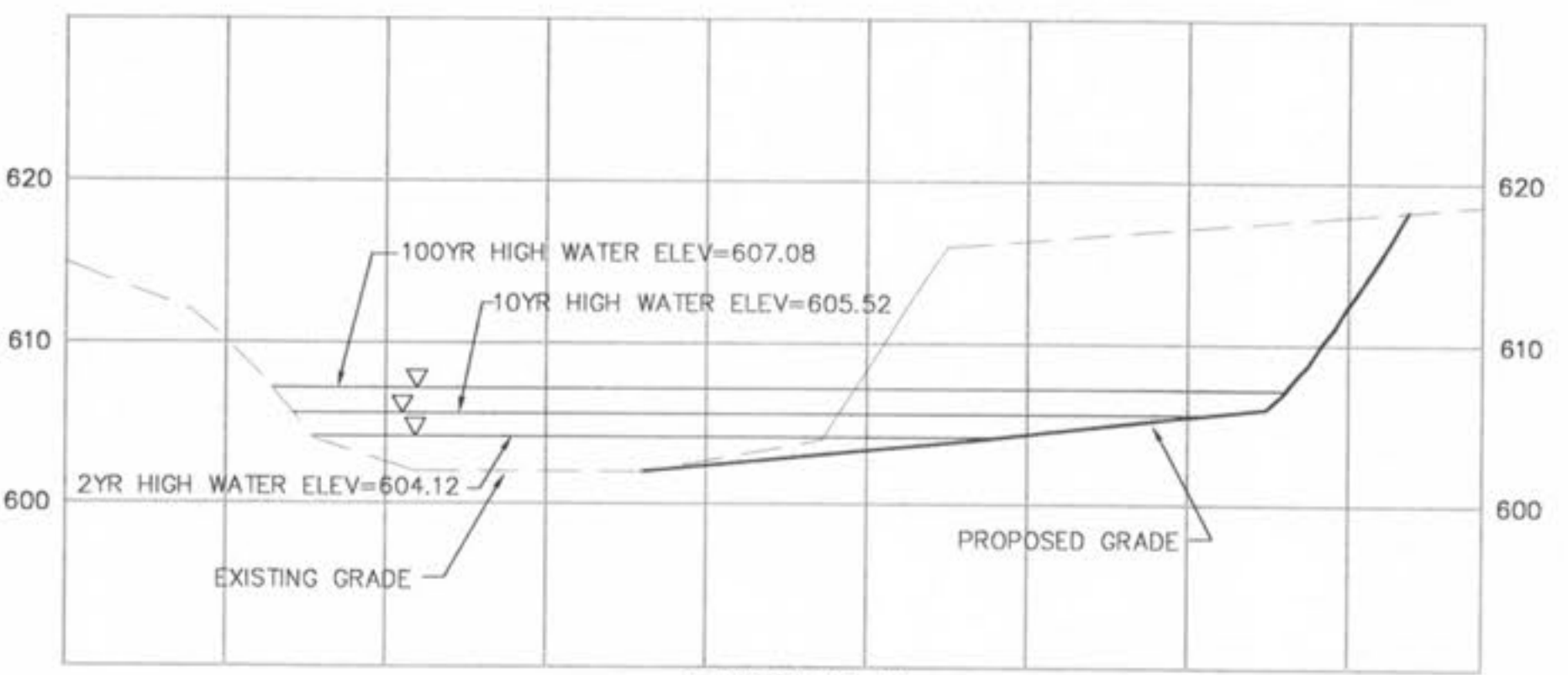
REINFORCING @ DISCHARGE PIPES  
SCALE: N.T.S.



BASIN A SECTION X-X

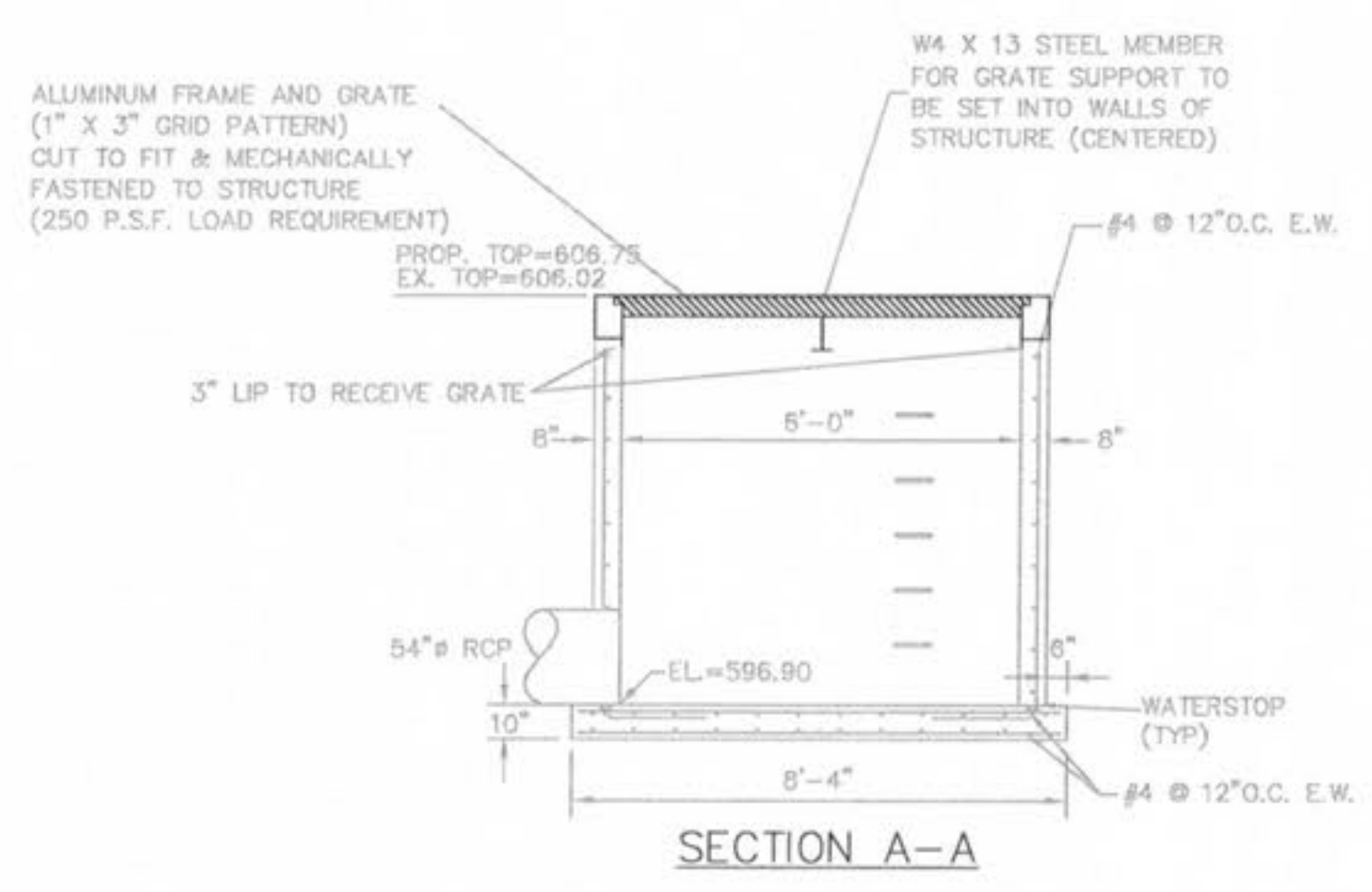


BASIN A SECTION Y-Y

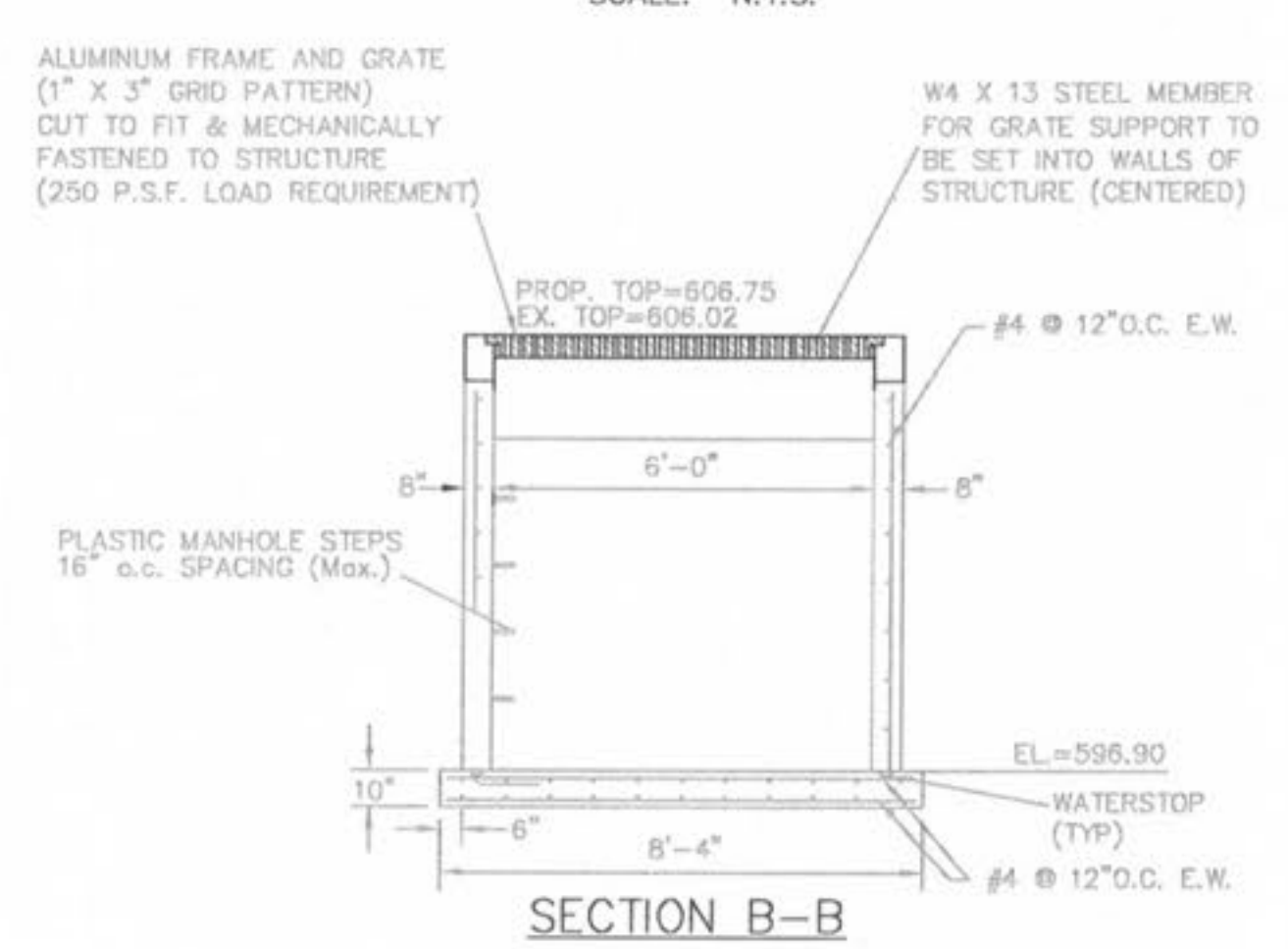


BASIN A SECTION Z-Z

**NOTE:**  
CONTRACTOR RESPONSIBLE FOR OBTAINING BUILDING PERMIT FOR OUTLET STRUCTURE FROM CITY OF O'FALLON.

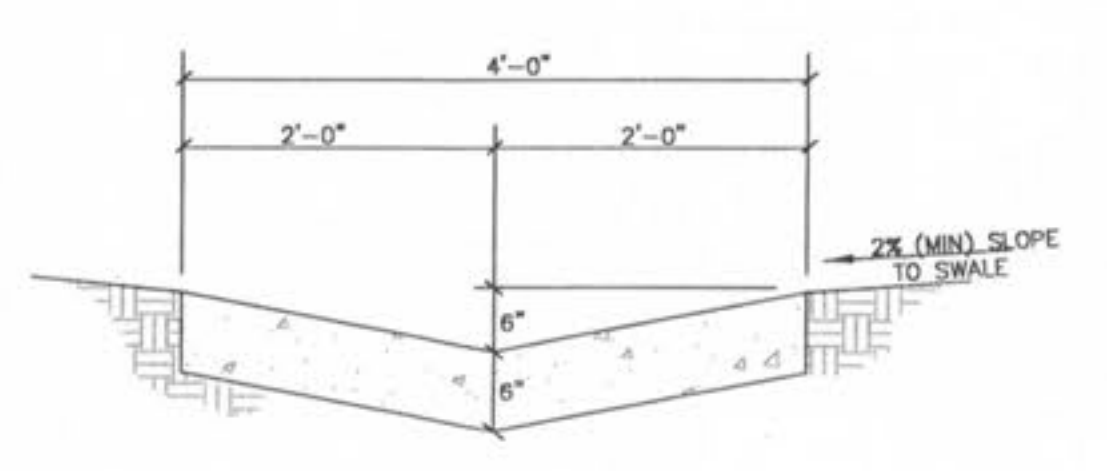


SECTION A-A

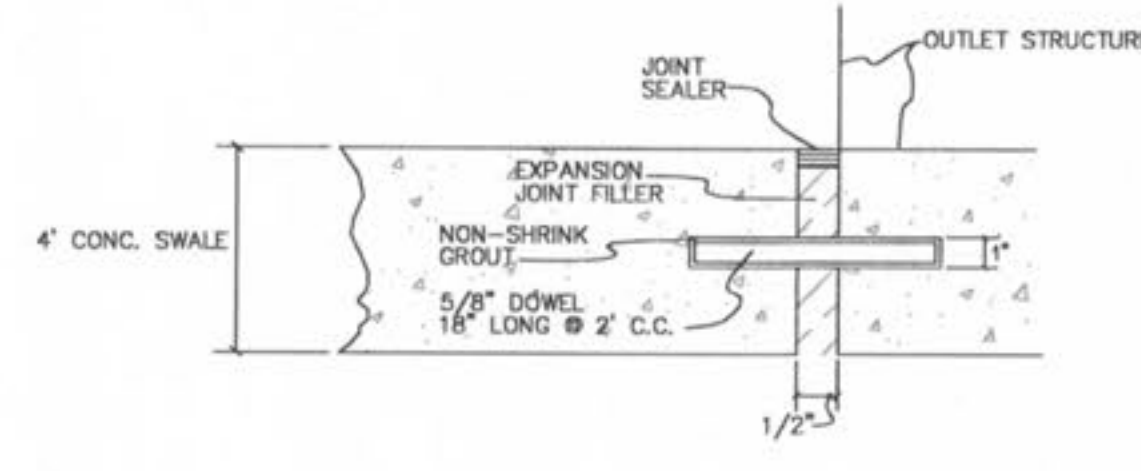


SECTION B-B

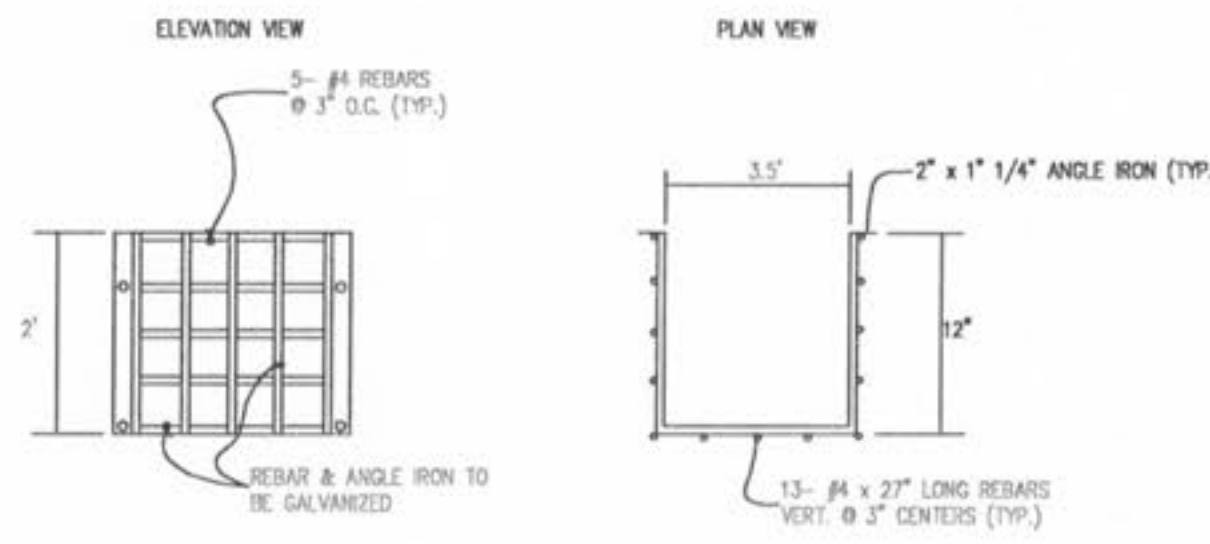
1 BASIN "A" OUTLET STRUCTURE  
SCALE: N.T.S. REF. DWG.



2 CONCRETE SWALE DETAIL  
SCALE: N.T.S. REF. DWG.



3 DOWEL DETAIL  
SCALE: N.T.S. REF. DWG.



4 TRASH RACK DETAIL  
SCALE: N.T.S. REF. DWG.

PHASE 2A

SEE SHEET C11.1 FOR CROSS SECTION LOCATIONS

REVISIONS	
DATE	DESCRIPTION
8/14/07	ISSUE #2/BUCKET CREEK
9/14/07	PHASE 2A
9/14/07	OWNER COMMENTS
9/14/07	BUCKET CREEK SANITARY DISTRICT
10/23/07	CITY OF FALLON COMMENTS
10/23/07	CITY OF FALLON COMMENTS
10/23/07	CITY OF FALLON COMMENTS

DEVELOPER/OWNER:  
THE JONES COMPANY HOMES, L.L.C.  
16640 CHESTERFIELD GROVE, SUITE 200  
CHESTERFIELD, MO 63005  
PHONE: (636) 537-7192



PRESTON WOODS - PHASE II  
IMPROVEMENT PLANS  
PRESTON WOODS LANE  
O'FALLON, MO. 63366  
DETENTION BASIN "A" DETAILS

planning • engineering • surveying • landscape architecture  
**Cole and Associates**  
INCORPORATED  
10777 sunset office dr.  
saint louis, missouri 63127  
p. 314.984.9887 f. 314.984.0587

DESIGNED BY: JKW  
DRAWN BY: KDK  
CHECKED BY: JFH  
DATE: 6/14/07

Job Number: 07-0041  
Sheet Number: C10.7

NOTE: THE DETAILS SHOWN HEREIN ARE FOR THE PURPOSE OF PRIVATE CONSTRUCTION ONLY. PUBLIC CONSTRUCTION WILL REQUIRE STRICT ADHERENCE TO THE DETAILS PUBLISHED BY DUCKETT CREEK AND ST. CHARLES COUNTY.

USER: M:\p07107 TAB: DETENTION DETAIL 10.7 DRAWING: S:\LCS\Sub\2007\07-0041\07-0041\_C10.7.dwg IMPROVEMENT PLANS PHASE 2A PLAN\_C10.0.DETAILS.dwg