

REFERENCE CITY OF O'FALLON SPECIFICATIONS FOR STREET SIGN COLOR

SAINT CHARLES COUNTY HIGHWAY DEPARTMENT ST. CHARLES, MISSOURI

STREET NAME SIGNS, DETAILS AND LOCATIONS

DATE: December, 2000 DRAWING C903.10

GENERAL NOTES

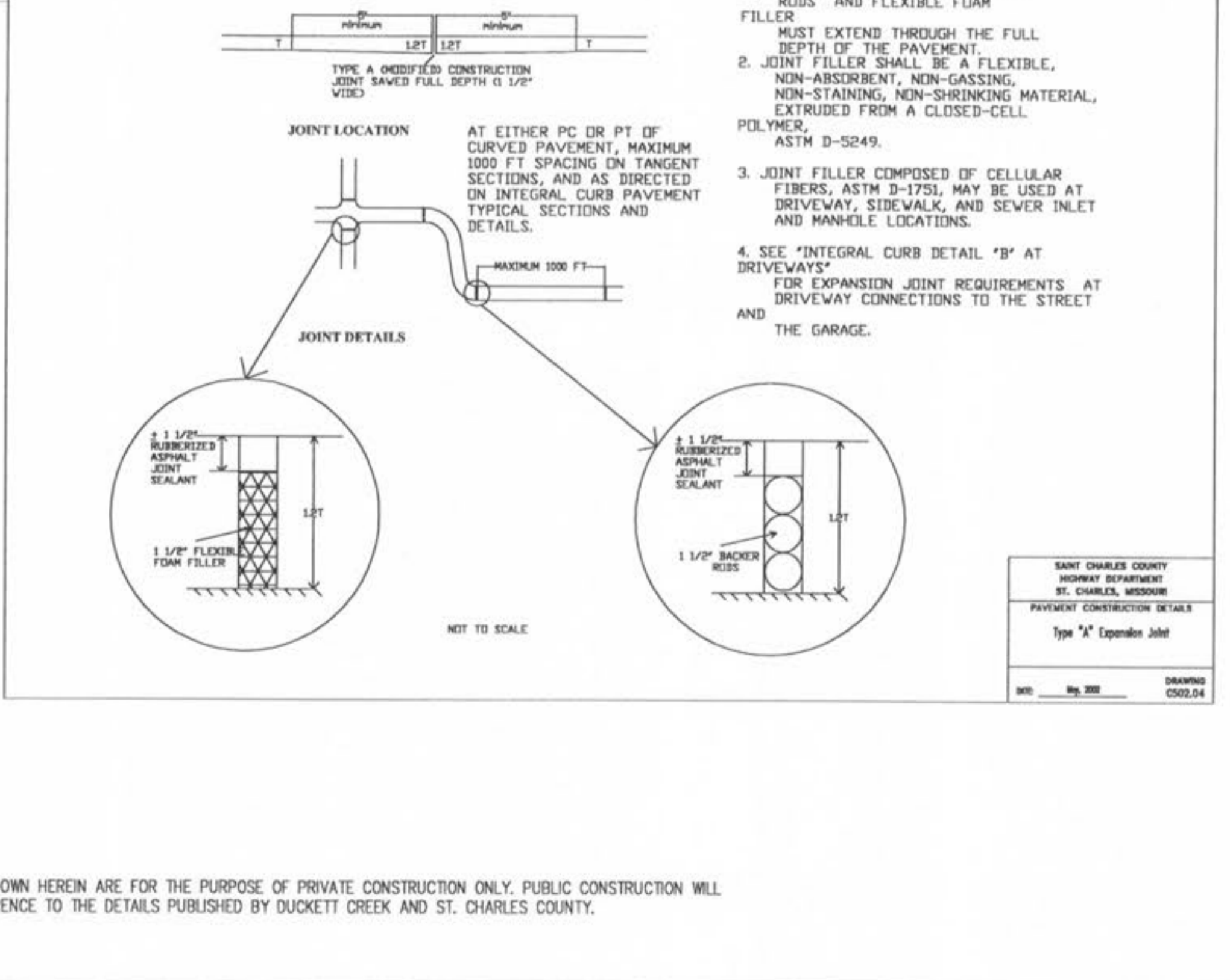
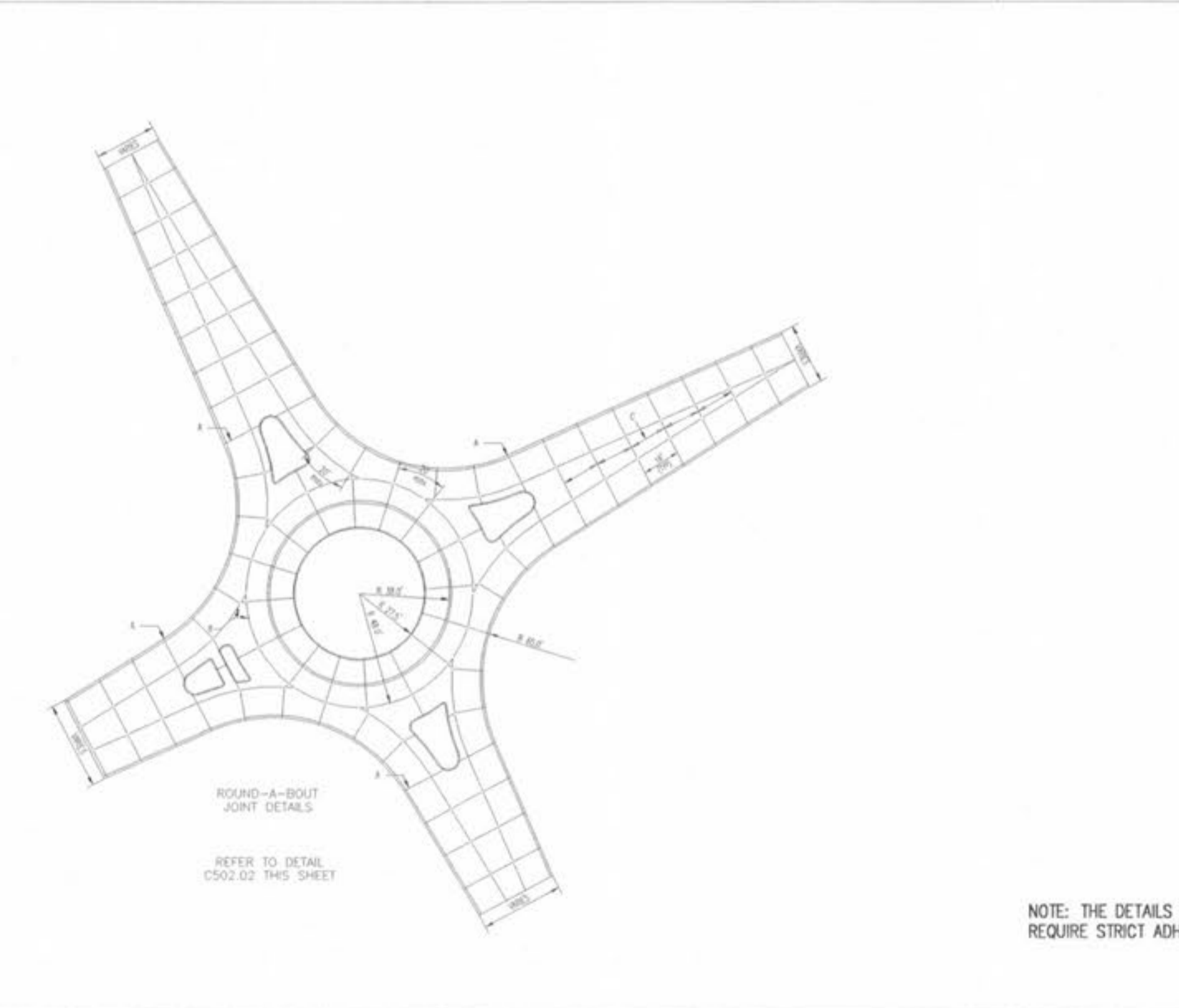
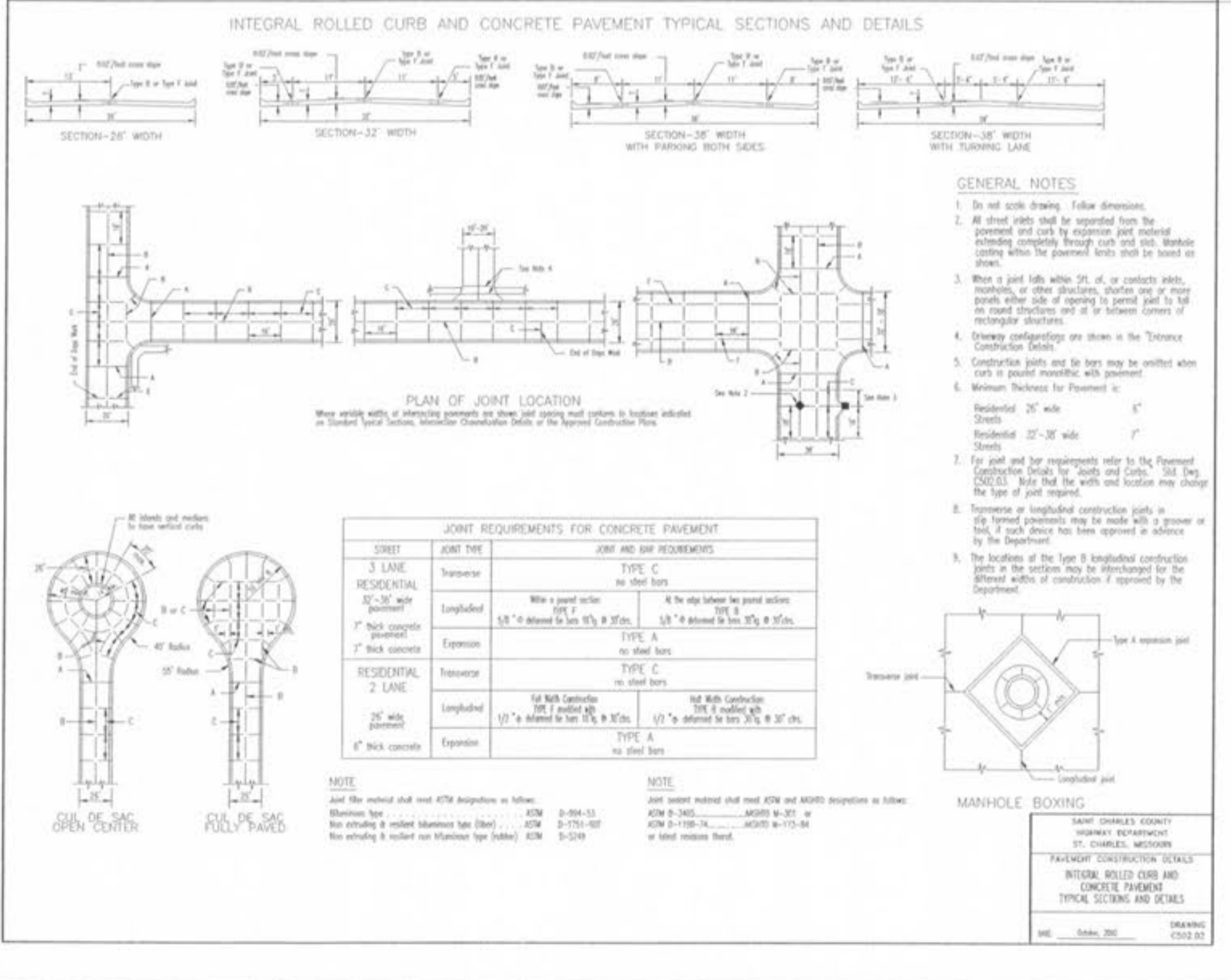
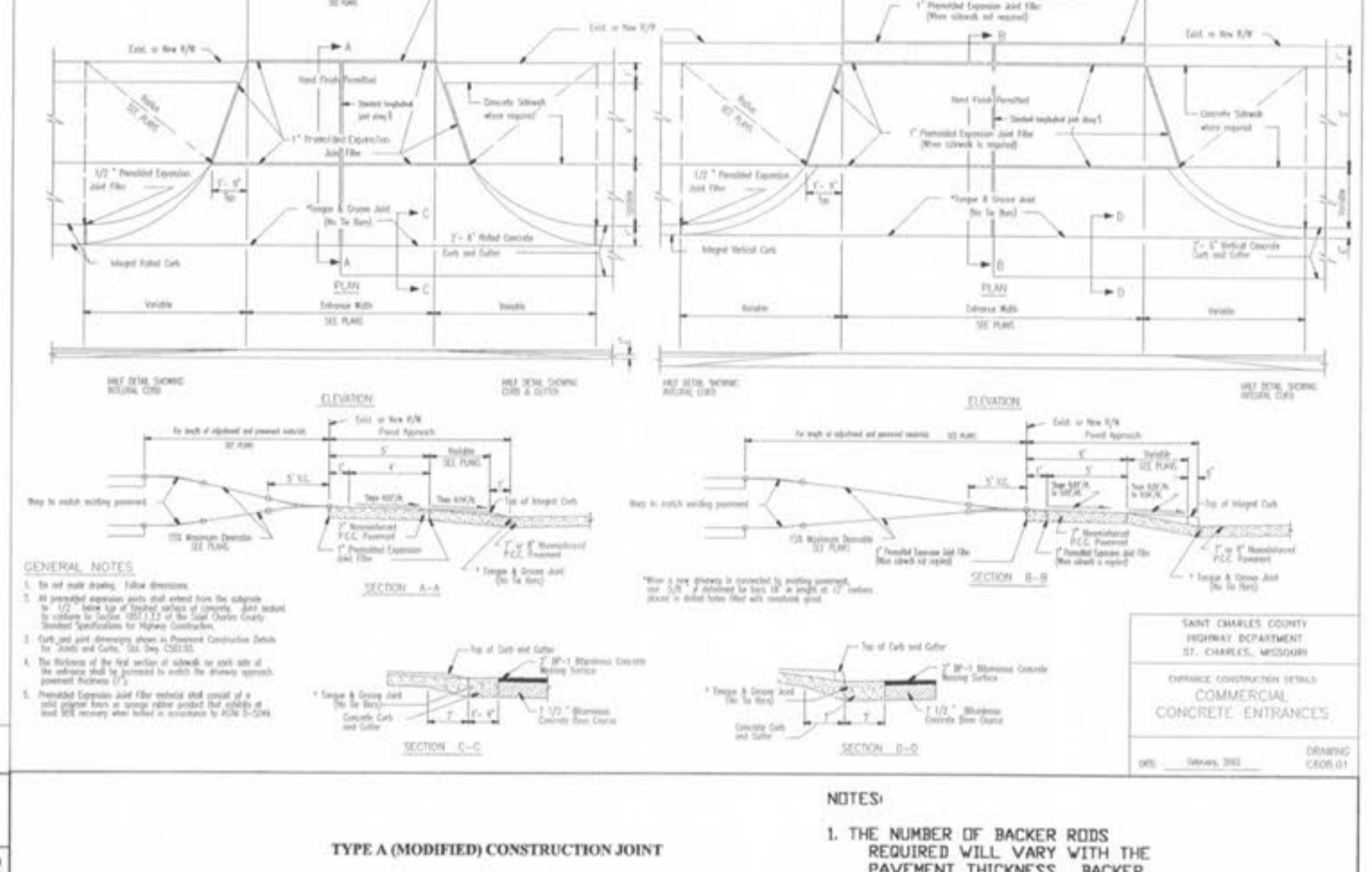
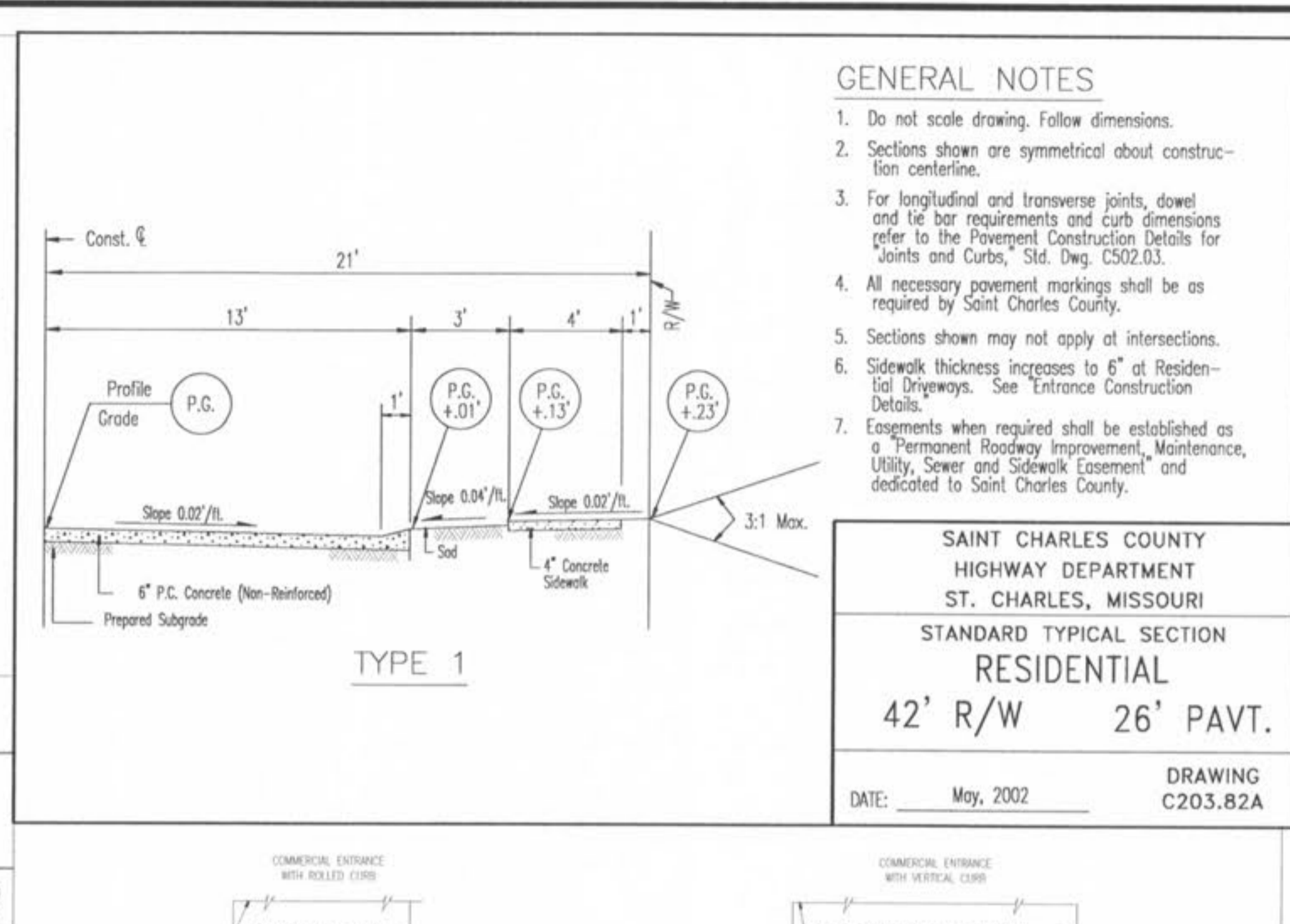
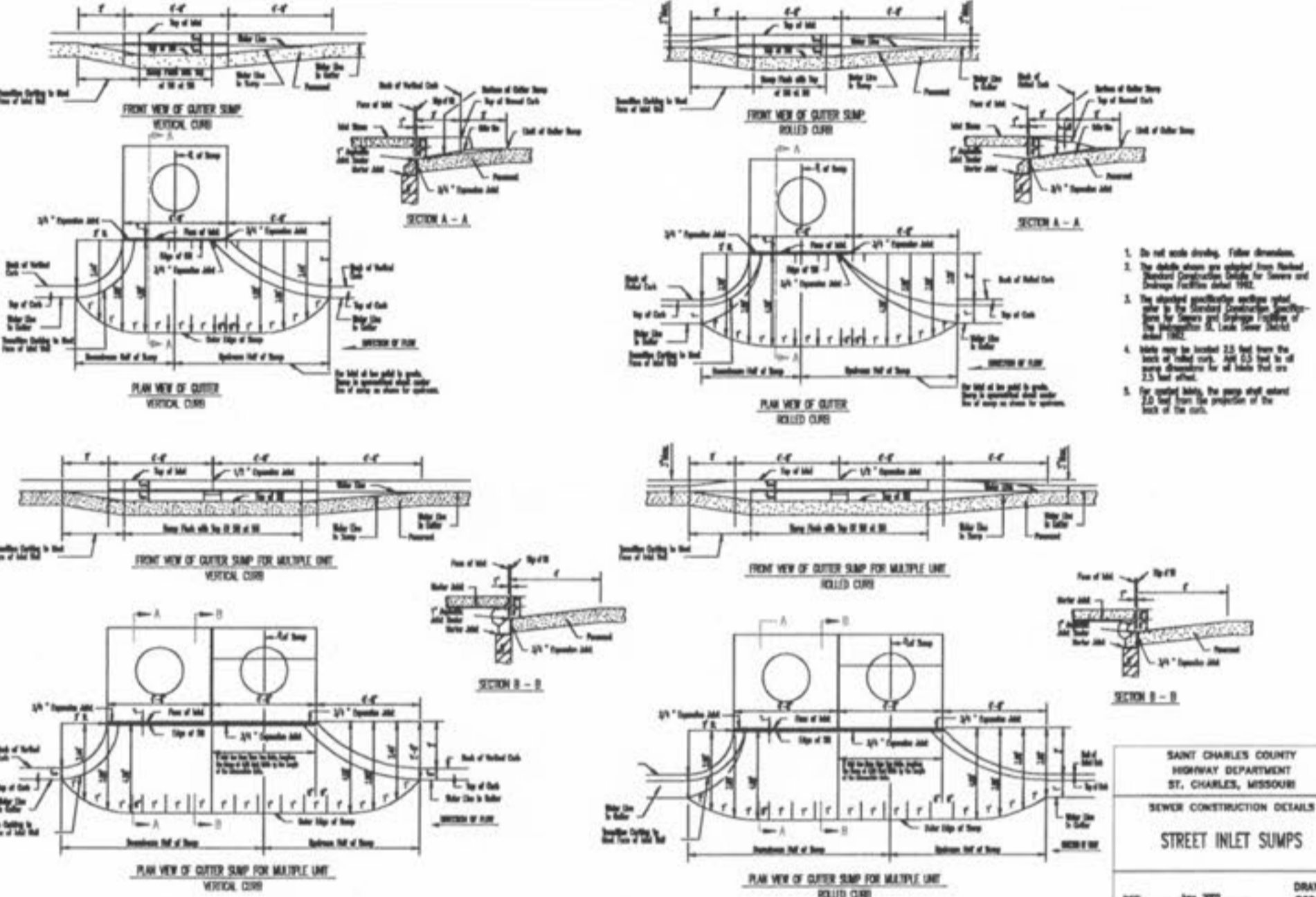
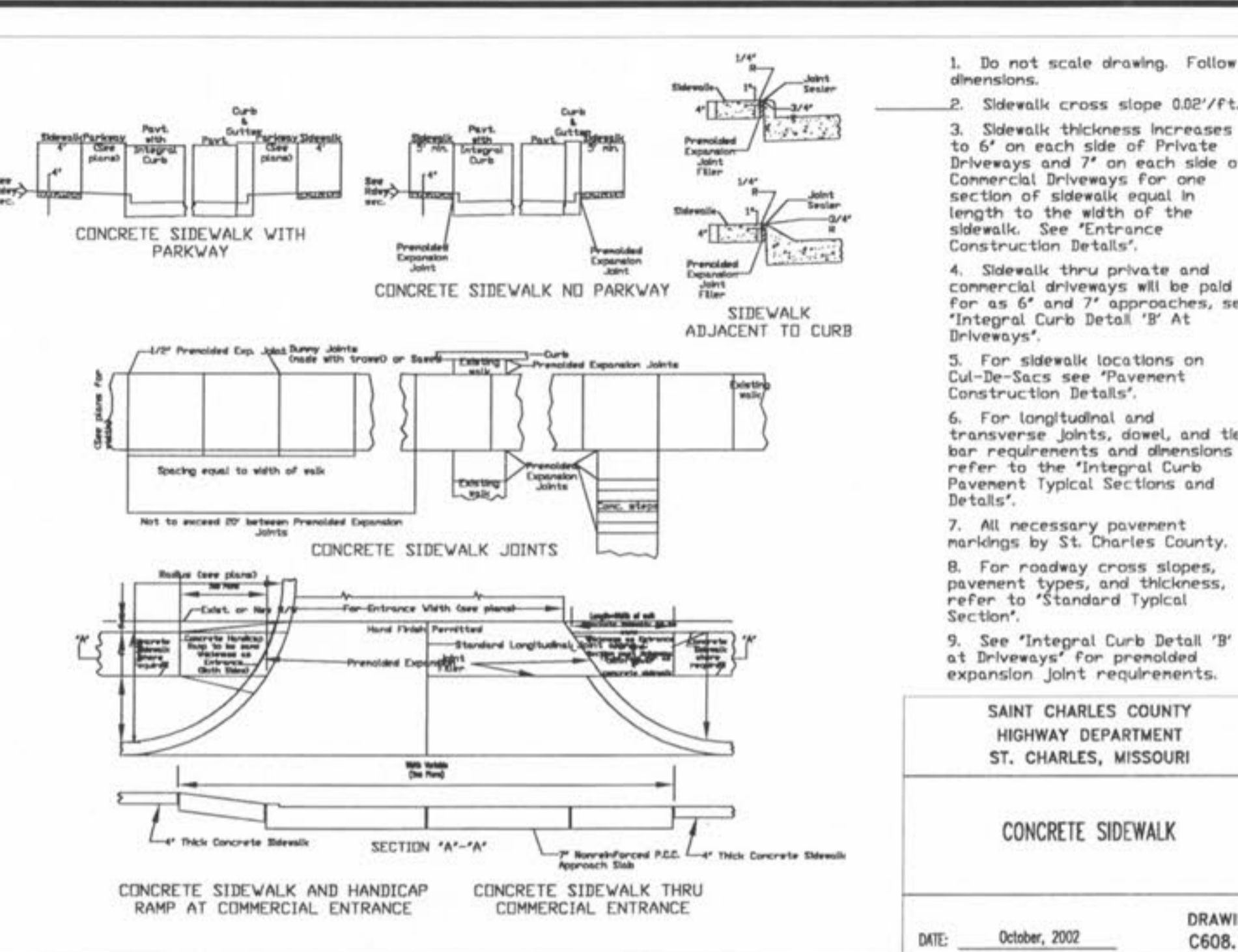
1. Street Name Sign plates shall be 9 inches wide extruded aluminum plates in 30, 36, 42, 48, 52 and 54 inch lengths per drawing shown on this exhibit.
2. Sign Posts shall have a 2 3/8 inch outside diameter and be 12 feet in length. They shall be either Schedule 40 Aluminum Pipe or Galvanized Steel with a wall thickness of 0.065 inches. The inside wall shall be galvanized or have a full zinc based organic coating in accordance with ASTM-A613 to obtain a weight of 0.90 oz. per sq. ft. commercial zinc weight (Z-90).
3. Signs are to be mounted a minimum of 3.5 feet from the back of curb with a minimum clearance from the sidewalk of 1.5 feet.
4. Sign posts shall be mounted 18-24 inches in the ground and set in a concrete base.
5. The contractor shall be responsible for verification of underground utilities and structures shown or not shown prior to the placement of sign posts.

SAINT CHARLES COUNTY HIGHWAY DEPARTMENT ST. CHARLES, MISSOURI

SEWER CONSTRUCTION DETAILS (PRECAST CONCRETE)

DATE: Jan. 2002 DRAWING C504.02

DIAMETER	LENGTH	WEIGHT	QUANTITY
12"	10'	1200	1200
12"	20'	2400	2400
12"	30'	3600	3600
12"	40'	4800	4800
12"	50'	6000	6000
12"	60'	7200	7200
12"	70'	8400	8400
12"	80'	9600	9600
12"	90'	10800	10800
12"	100'	12000	12000
12"	110'	13200	13200
12"	120'	14400	14400
12"	130'	15600	15600
12"	140'	16800	16800
12"	150'	18000	18000
12"	160'	19200	19200
12"	170'	20400	20400
12"	180'	21600	21600
12"	190'	22800	22800
12"	200'	24000	24000
12"	210'	25200	25200
12"	220'	26400	26400
12"	230'	27600	27600
12"	240'	28800	28800
12"	250'	30000	30000
12"	260'	31200	31200
12"	270'	32400	32400
12"	280'	33600	33600
12"	290'	34800	34800
12"	300'	36000	36000



REVISIONS

DATE	DESCRIPTION
8/24/07	OWNER/FINISHER/DUCKETT CREEK
9/14/07	PMS/SAZ
9/14/07	OWNER COMMENTS
10/12/07	DUCKETT CREEK/SANITARY DISTRICT
10/12/07	OWNER COMMENTS
10/18/07	CITY OF FALLON COMMENTS
10/23/07	CITY OF FALLON COMMENTS

THE JONES COMPANY HOMES, L.L.C.
16640 CHESTERFIELD GROVE, SUITE 200
CHESTERFIELD, MO 63005
PHONE: (636) 537-7192

SAINT CHARLES COUNTY HIGHWAY DEPARTMENT ST. CHARLES, MISSOURI

STANDARD TYPICAL SECTION RESIDENTIAL 42' R/W 26' PAVT.

DATE: May, 2002 DRAWING C203.82A

PRESTON WOODS - PHASE II IMPROVEMENT PLANS

PRESTON WOODS LANE O'FALLON, MO. 63366

and ASSOCIATES INCORPORATED

10777 sunset office dr. saint louis, missouri 63127 p. 314 984 9887 f. 314 984 0367

DESIGNED BY JKW
DRAWN BY KDK
CHECKED BY JFH
DATE 6/14/07
Job Number 07-0041
Sheet Number C10.9

USER: Mch04a TAB: SITE DETAIL SHEET 10.9
DATE: 06/13/07 12:00:00
DRAWING: S:\0355\03552007\07-0041\07-0041.dwg IMPROVEMENT PLANS PHASE 2\NO_PLAN_C10.D.DETAILS.dwg

NOTE: THE DETAILS SHOWN HEREIN ARE FOR THE PURPOSE OF PRIVATE CONSTRUCTION ONLY. PUBLIC CONSTRUCTION WILL REQUIRE STRICT ADHERENCE TO THE DETAILS PUBLISHED BY DUCKETT CREEK AND ST. CHARLES COUNTY.