

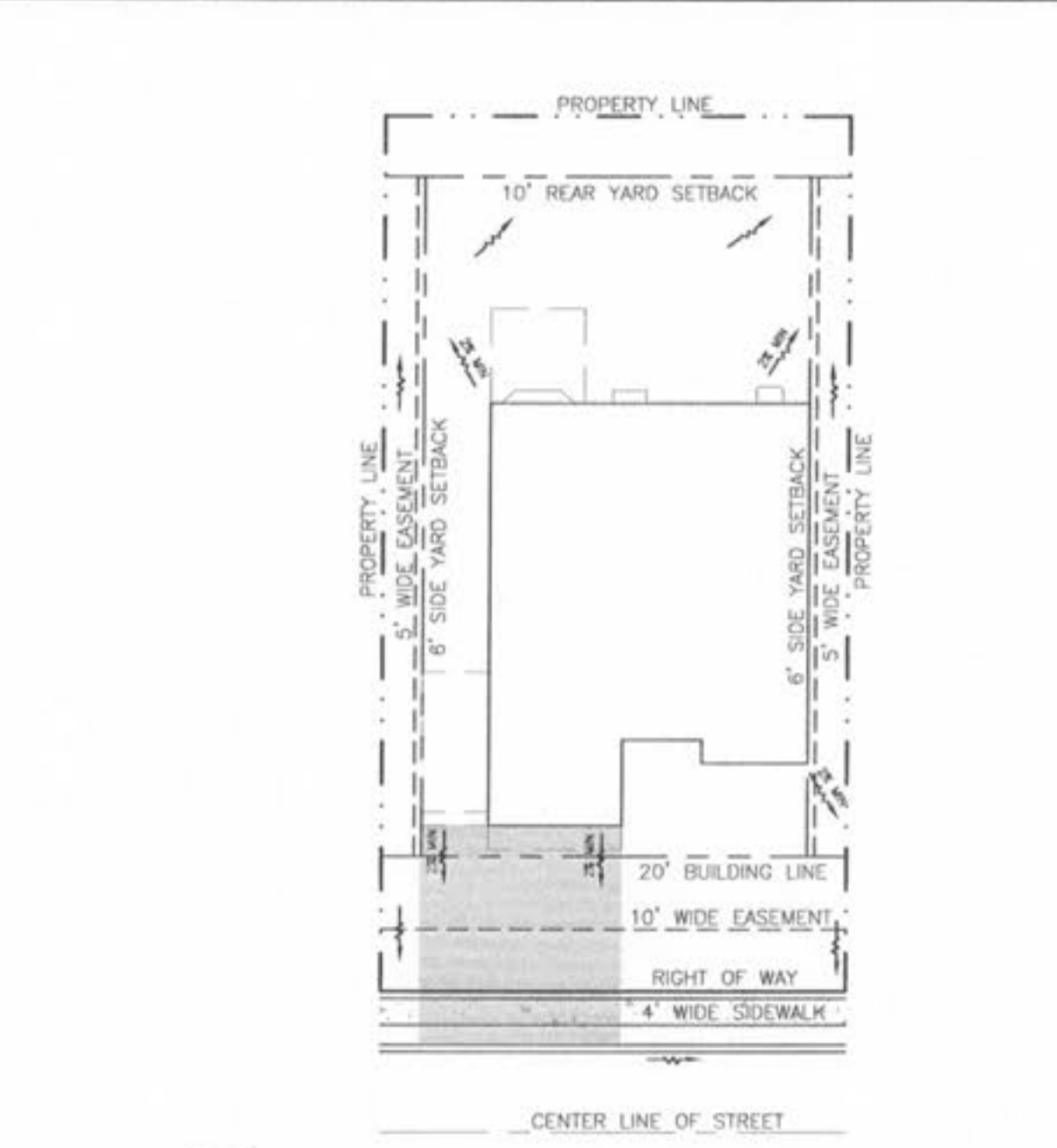
GENERAL NOTES

1. Barricade shall be placed at least 10' from any existing or proposed utility.
2. Barricade shall be placed on a compacted aggregate base.
3. Barricade shall be placed on a compacted aggregate base.
4. Barricade shall be placed on a compacted aggregate base.
5. Barricade shall be placed on a compacted aggregate base.
6. Barricade shall be placed on a compacted aggregate base.

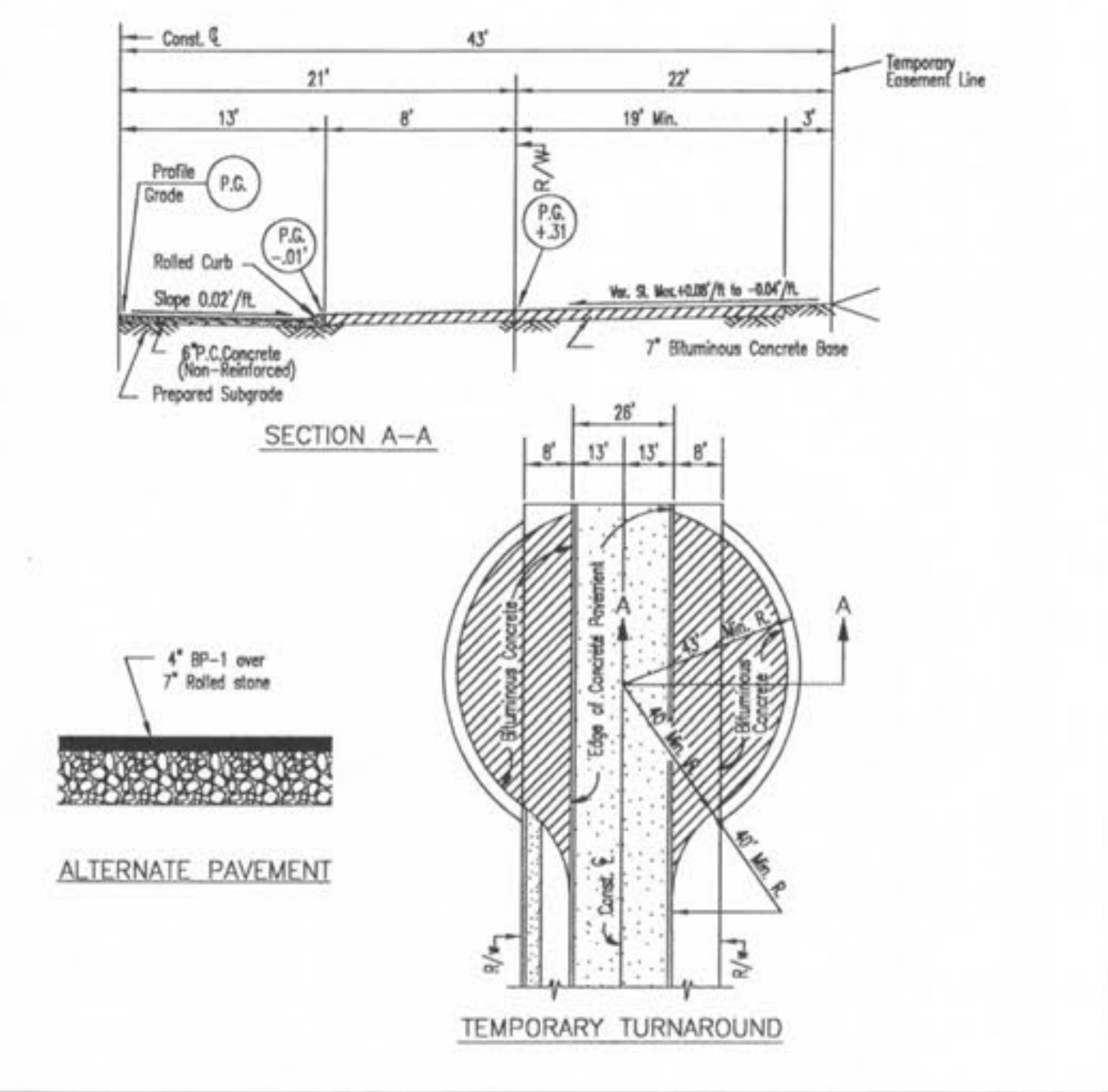
SAINT CHARLES COUNTY
HIGHWAY DEPARTMENT
ST. CHARLES, MISSOURI

TREATMENT OF TEMPORARY TERMINATIONS OF ROADWAY PAVEMENT

DATE: December, 2002 DRAWING: C502.11



1 TYP. LOT FLOW PATTERN DETAIL
SCALE: N.T.S. REF. DWG.



GENERAL NOTES

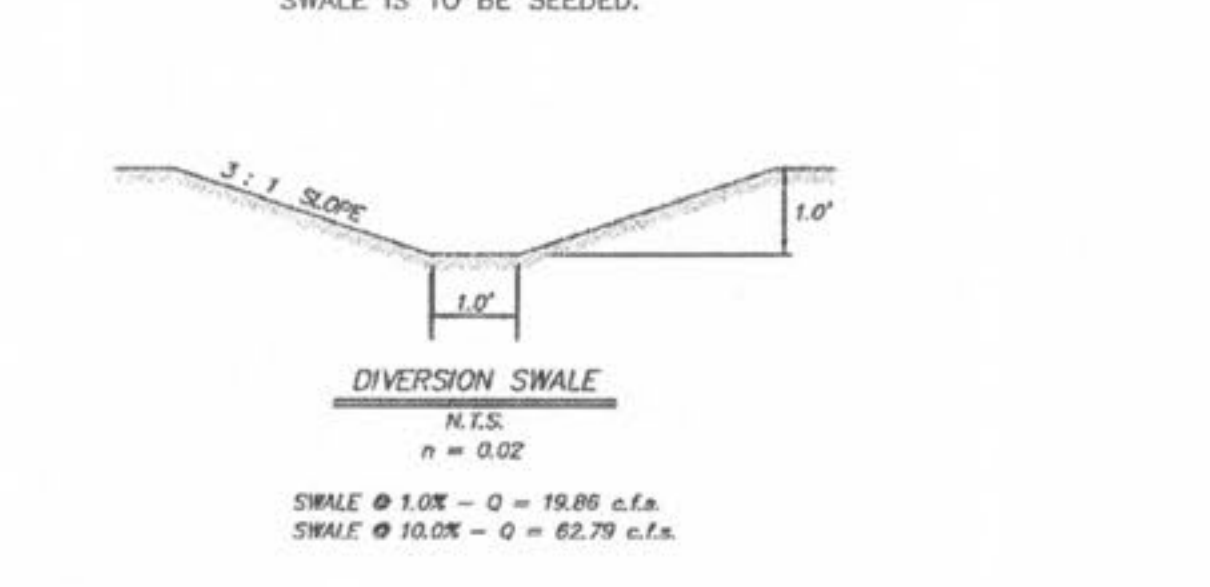
1. Do not scale drawing. Follow dimensions.
2. For longitudinal and transverse joints, doweled and bar requirements and curb dimensions and show refer to the Pavement Construction Details for Joints and Curb, Std. DWG. C502.03.
3. All necessary government markings shall be as required by Saint Charles County.
4. For roadway cross slopes, pavement types and thickness refer to Standard Typical Sections.
5. Permits will not be issued for building construction on lots abutting a temporary turnaround unless and until the turnaround is actually constructed and has been approved by the Department.
6. The removal of the temporary turnaround surface, the restoration of the disturbed ground, and the extension of any sidewalk shall be the responsibility of the party(ies) that will be extending the street.

SAINT CHARLES COUNTY
HIGHWAY DEPARTMENT
ST. CHARLES, MISSOURI

PAVEMENT CONSTRUCTION DETAILS
RESIDENTIAL TEMPORARY TURNAROUND

DATE: June, 2002 DRAWING: C502.06

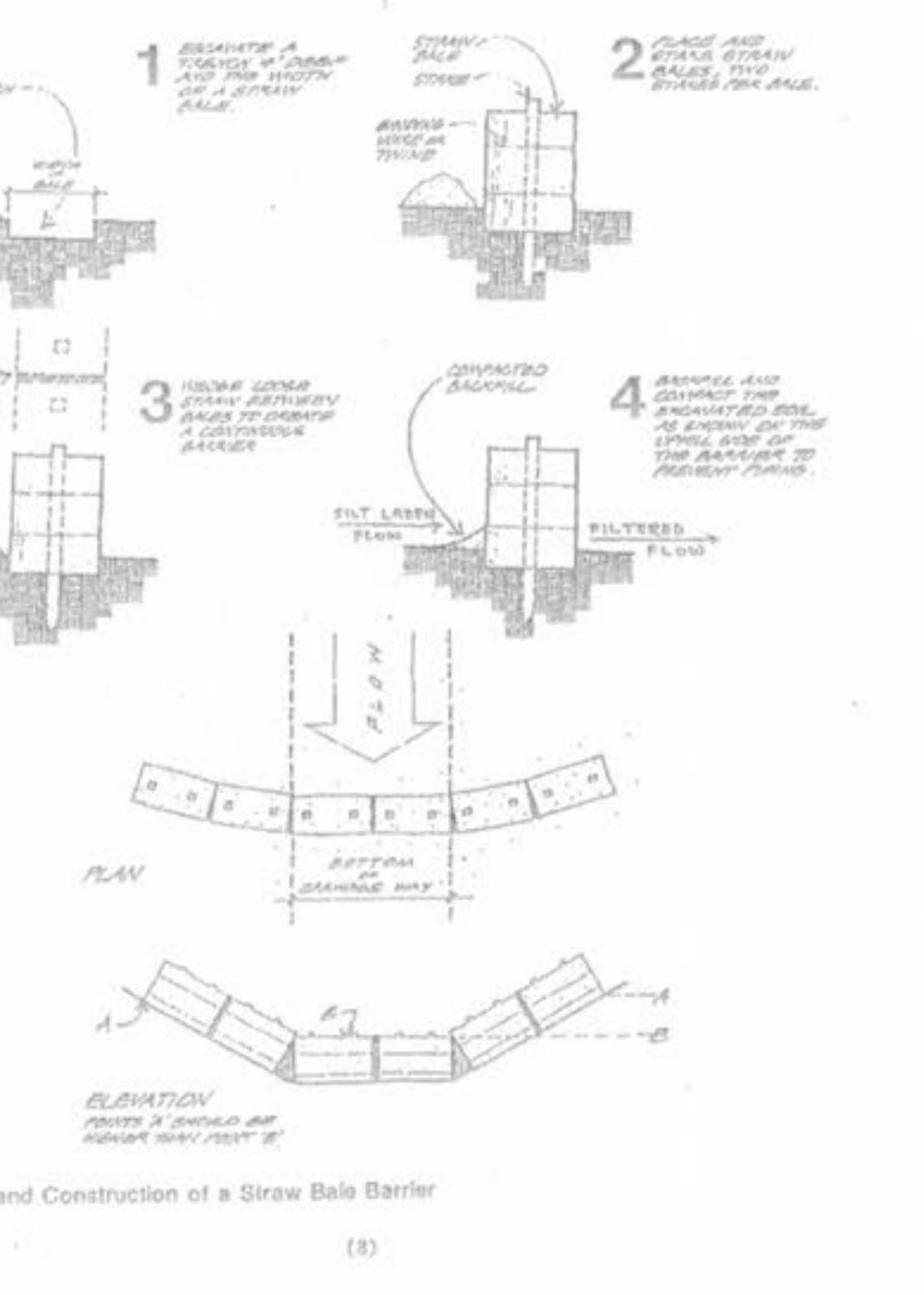
2 TYPICAL TEMPORARY DIVERSION SWALE
SWALE IS TO BE SEEDED.



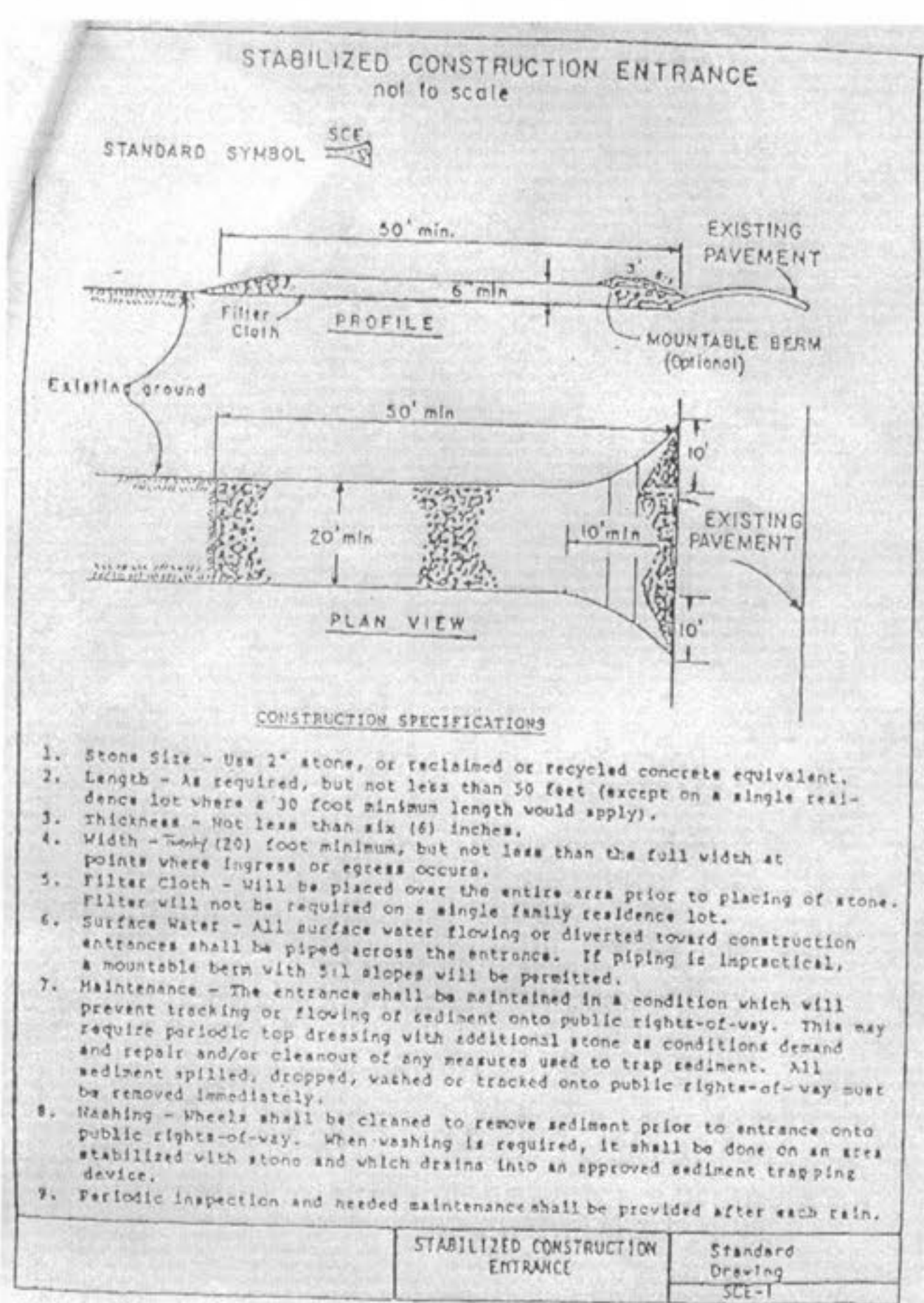
2 MULTI-USE WALKING TRAIL DETAIL
SCALE: N.T.S. REF. DWG.

STRAW BALE BARRIERS
For Urban Development Sites
APPENDIX C

SYNTHETIC FILTER BARRIERS
For Urban Development Sites
APPENDIX D



IF WATER IS NOT AVAILABLE, A WATER TRUCK WILL BE PROVIDED.



TRAPEZOIDAL CHANNEL ANALYSIS
NORMAL DEPTH COMPUTATION
TYPICAL YARD SWALE WITH 1% SLOPE
September 21, 2007

DESCRIPTION	PROGRAM INPUT DATA	VALUE
Flow Rate (cfs)		4.0
Channel Bottom Slope (ft/ft)		0.01
Manning's Roughness Coefficient (n-value)		0.027
Channel Left Side Slope (horizontal/vertical)		3.0
Channel Right Side Slope (horizontal/vertical)		3.0
Channel Bottom Width (ft)		0.01

DESCRIPTION	COMPUTATION RESULTS	VALUE
Normal Depth (ft)		0.71
Flow Velocity (fps)		2.66
Froude Number		0.789
Velocity Head (ft)		0.11
Energy Head (ft)		0.82
Cross-Sectional Area of Flow (sq ft)		1.50
Top Width of Flow (ft)		4.25

TRAPEZOIDAL CHANNEL ANALYSIS
NORMAL DEPTH COMPUTATION
TYPICAL YARD SWALE WITH 8% SLOPE
September 26, 2007

DESCRIPTION	PROGRAM INPUT DATA	VALUE
Flow Rate (cfs)		2.16
Channel Bottom Slope (ft/ft)		0.08
Manning's Roughness Coefficient (n-value)		0.027
Channel Left Side Slope (horizontal/vertical)		3.0
Channel Right Side Slope (horizontal/vertical)		3.0
Channel Bottom Width (ft)		0.01

DESCRIPTION	COMPUTATION RESULTS	VALUE
Normal Depth (ft)		0.38
Flow Velocity (fps)		4.99
Froude Number		2.02
Velocity Head (ft)		0.39
Energy Head (ft)		0.77
Cross-Sectional Area of Flow (sq ft)		0.43
Top Width of Flow (ft)		2.28

HYDROCALC Hydraulics for Windows, Version 1.2a Copyright (c) 1996
Dodson & Associates, Inc., 5629 FM 1960 West, Suite 314, Houston, TX 77069
Phone: (281)440-3787, Fax: (281)440-4742, Email: software@dodson-hydro.com
All Rights Reserved.

HYDROCALC Hydraulics for Windows, Version 1.2a Copyright (c) 1996
Dodson & Associates, Inc., 5629 FM 1960 West, Suite 314, Houston, TX 77069
Phone: (281)440-3787, Fax: (281)440-4742, Email: software@dodson-hydro.com
All Rights Reserved.

REVISIONS

DATE	BY	DESCRIPTION
8/24/07	OWNER/PROJ/ENG/DUCKETT CREEK	
9/14/07	OWNER/PROJ/ENG/DUCKETT CREEK	
9/14/07	OWNER/PROJ/ENG/DUCKETT CREEK	
9/14/07	OWNER/PROJ/ENG/DUCKETT CREEK	
10/19/07	CITY OF FALLON COMMENTS	
10/19/07	CITY OF FALLON COMMENTS	
10/23/07	CITY OF FALLON COMMENTS	

DEVELOPER/OWNER: THE JONES COMPANY HOMES, L.L.C.
16640 CHESTERFIELD GROVE, SUITE 200
CHESTERFIELD, MO 63005
PHONE: (636) 537-7192

THE PROFESSIONAL ENGINEER'S SIGNATURE AND PERSONAL SEAL ARE REQUIRED FOR ALL DRAWINGS SUBMITTED TO THE CITY OF FALLON. THE PROFESSIONAL ENGINEER SHALL BE RESPONSIBLE FOR ALL DESIGN AND CONSTRUCTION DETAILS. THE PROFESSIONAL ENGINEER SHALL BE RESPONSIBLE FOR OBTAINING ALL NECESSARY PERMITS AND APPROVALS. THE PROFESSIONAL ENGINEER SHALL BE RESPONSIBLE FOR THE PROJECT TO WHICH THIS DRAWING IS USED.

SEAL: JOHN R. HENDERSON, PROFESSIONAL ENGINEER, CIVIL, MISSOURI, NO. 000000000

PRESTON WOODS - PHASE II
IMPROVEMENT PLANS
PRESTON WOODS LANE
OF FALLON, MO. 63366
SITE DETAILS

planning • engineering • surveying • landscape architecture
Gole and ASSOCIATES INCORPORATED
10777 sunset office dr.
saint louis, missouri 63127
p: 314 984 9887 f: 314 984 0587

DESIGNED BY: JKW
DRAWN BY: KDK
CHECKED BY: JFH
DATE: 6/14/07
Job Number: 07-0041
Sheet Number: C10.10

USER: MIGHT_PAB SITE DETAIL SHEET 10.10
DATE: Oct 23, 2007 - 12:33pm
DRAWING: S:\085\sh0707-0041\07-0041.dwg IMPROVEMENT PLANS PHASE 2\0_Plan_C10.0-Details.dwg