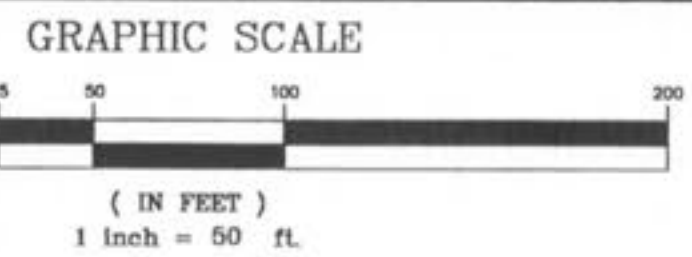
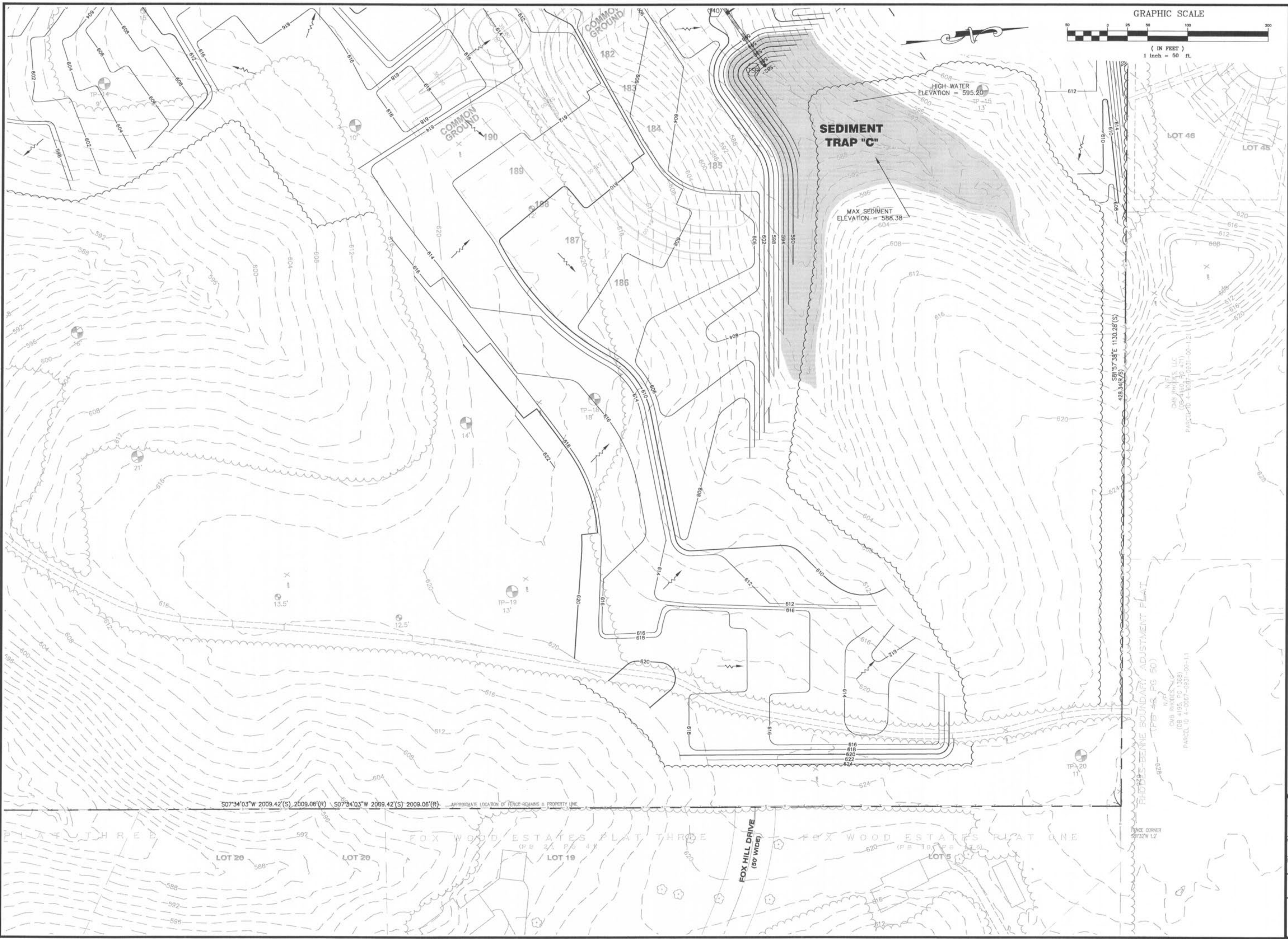


USER: Nelson TAB: G3.3
 DATE: Sep 26, 2007 - 3:34pm
 DRAWING: S:\JOBS\Jobs2007\07-0041\07-0041\WASS GRADING PLANS PHASE 2B\0_DPLAN_G3.0 GRADING PLAN.dwg



REVISIONS	
DATE	DESCRIPTION
9/27/07	CITY COMMENTS
9/28/07	CITY COMMENTS

DEVELOPER/OWNER:
THE JONES COMPANY HOMES, L.L.C.
 16640 CHESTERFIELD GROVE, SUITE 200
 CHESTERFIELD, MO 63005
 PHONE: (636) 537-7192

THE PROFESSIONAL ENGINEER'S SIGNATURE AND PERSONAL SEAL APPEAR HEREON AS REQUIRED BY THE STATE OF MISSOURI. FOR WHAT APPEARS ON THIS PLAN AND LOGS, I AM ASSUMING RESPONSIBILITY ON MY PART AND THAT OF ANY INSTRUMENTS NOT SPECIFICALLY ESTIMATED, REPORTS, OR OTHER DOCUMENTS OF INSTRUMENTS NOT CALLED OUT PART OF THIS PROJECT. TO WHOM THE WORK IS TO BE PERFORMED.



PRESTON WOODS - PHASE II
 REVISED MASS GRADING PLANS
 + PARTIAL STORM SEWER
 ST. CHARLES, MO. 63366

planning • engineering • surveying • landscape architecture
Gole
 and ASSOCIATES
 INCORPORATED

10777 sunset office dr.
 saint louis, missouri 63127
 p: 314 964 9887 f: 314 984 0587

DESIGNED BY: JKW
 DRAWN BY: JKW
 CHECKED BY: JFH
 DATE: 8/13/07
 Job Number: **07-0041**
 Sheet Number: **G3.3**