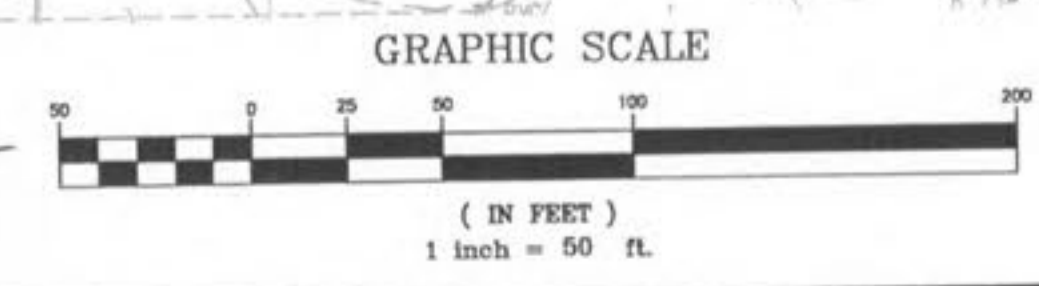
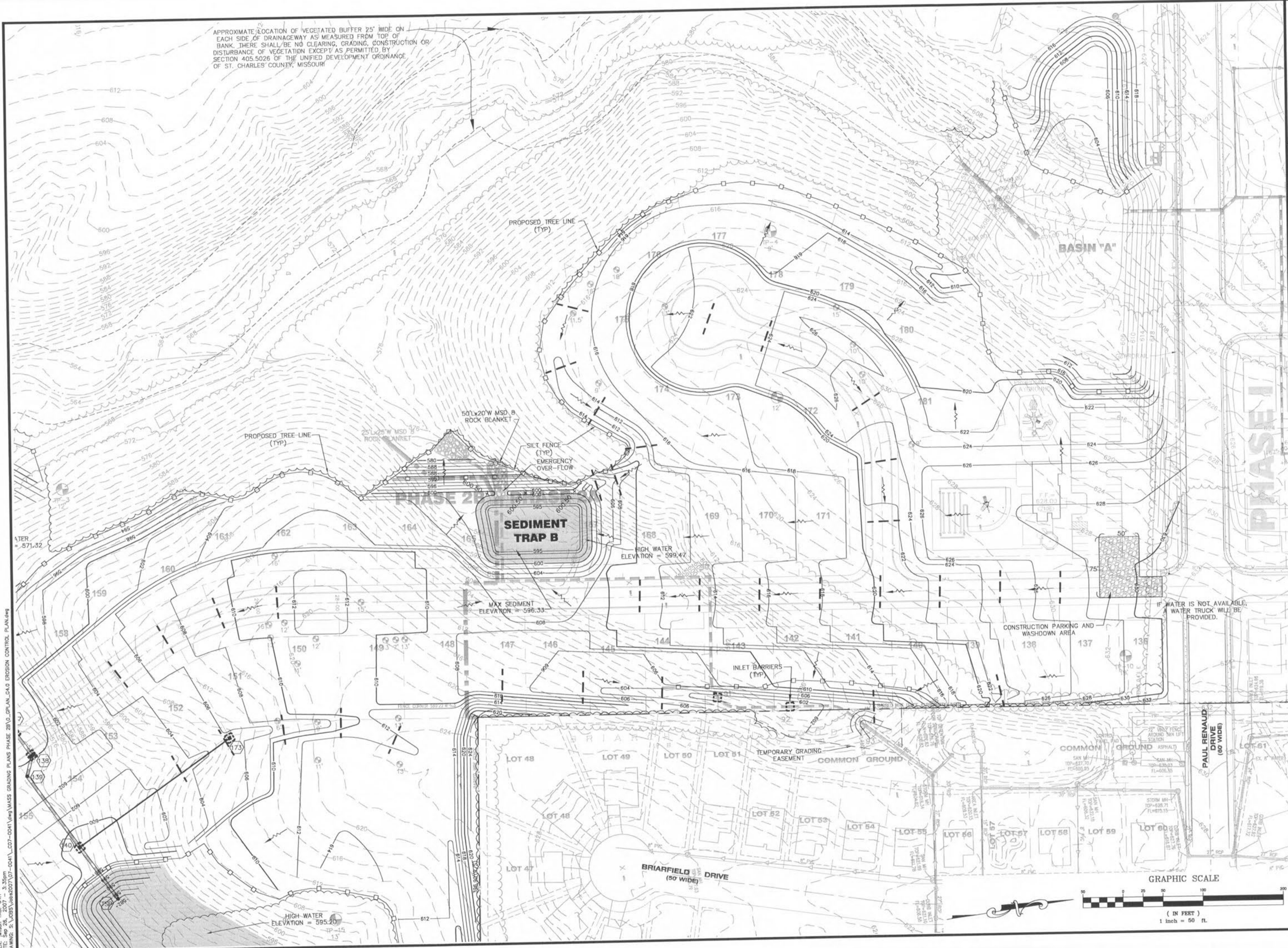


USER: Wilson TAB: G4.1
 DATE: Sep 26, 2007
 DRAWING: S:\055\055007\07-0041\07-0041.dwg\MASS GRADING PLANS PHASE 2B\0_PLAN_G4.0 EROSION CONTROL_PLAN.dwg

APPROXIMATE LOCATION OF VEGETATED BUFFER 25' WIDE ON EACH SIDE OF DRAINAGEWAY AS MEASURED FROM TOP OF BANK. THERE SHALL BE NO CLEARING, GRADING, CONSTRUCTION OR DISTURBANCE OF VEGETATION EXCEPT AS PERMITTED BY SECTION 405.5026 OF THE UNIFIED DEVELOPMENT ORDINANCE OF ST. CHARLES COUNTY, MISSOURI



REVISIONS

| DATE | BY | REVISION |
|---------|-----|---------------|
| 9/17/07 | JKW | CITY COMMENTS |
| 9/17/07 | JKW | CITY COMMENTS |
| 9/17/07 | JKW | CITY COMMENTS |

DEVELOPER/OWNER
THE JONES COMPANY HOMES, L.L.C.
 16640 CHESTERFIELD GROVE, SUITE 200
 CHESTERFIELD, MO 63005
 PHONE: (636) 537-7192



PRESTON WOODS - PHASE II
 REVISED MASS GRADING PLANS
 + PARTIAL STORM SEWER
 ST. CHARLES, MO. 63366

planning • engineering • surveying • landscape architecture
Cole and Associates
 INCORPORATED
 10777 sunset office dr.
 saint louis, missouri 63127
 p: 314 984 9887 f: 314 984 0587

DESIGNED BY JKW
 DRAWN BY JKW
 CHECKED BY JFH
 DATE 8/13/07
 Job Number 07-0041
 Sheet Number G4.1