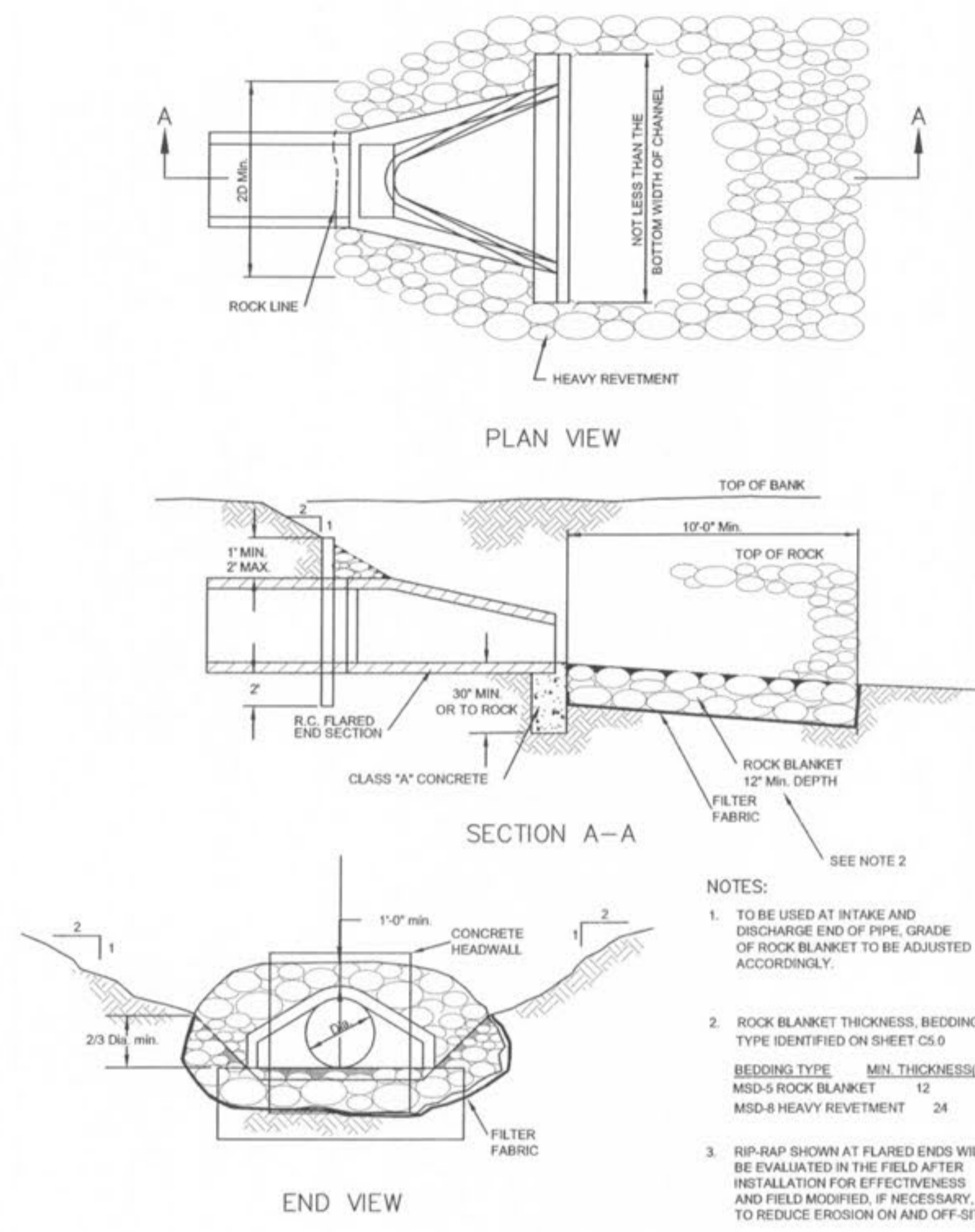
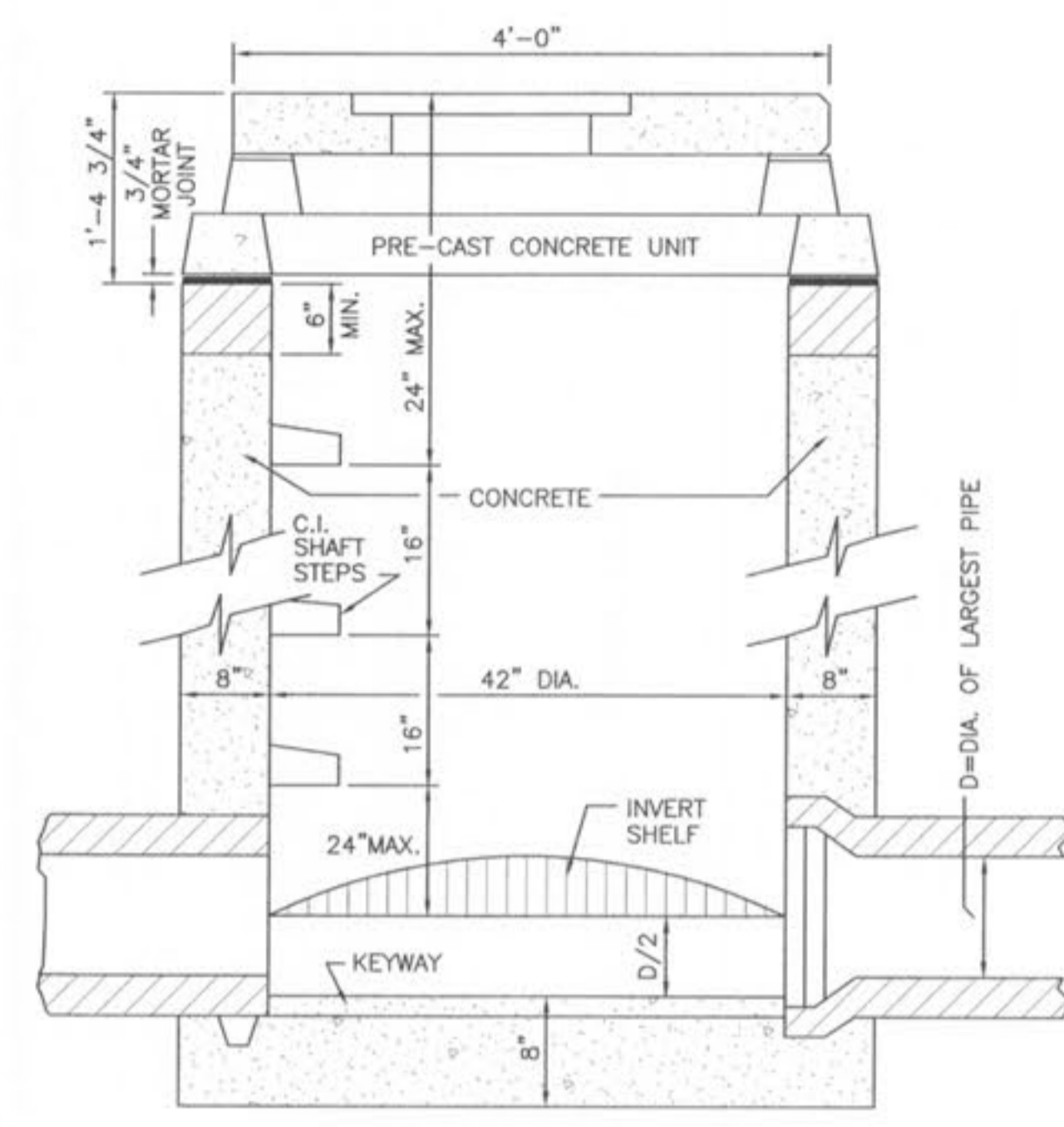


1 MANHOLE DETAIL
SCALE: N.T.S. REF. DWG.

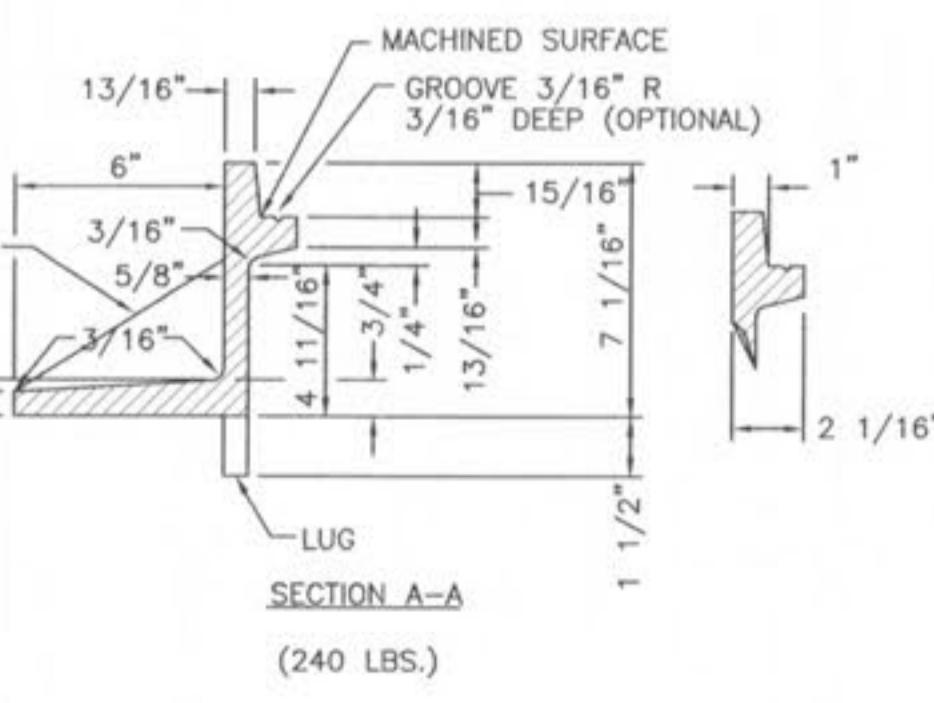
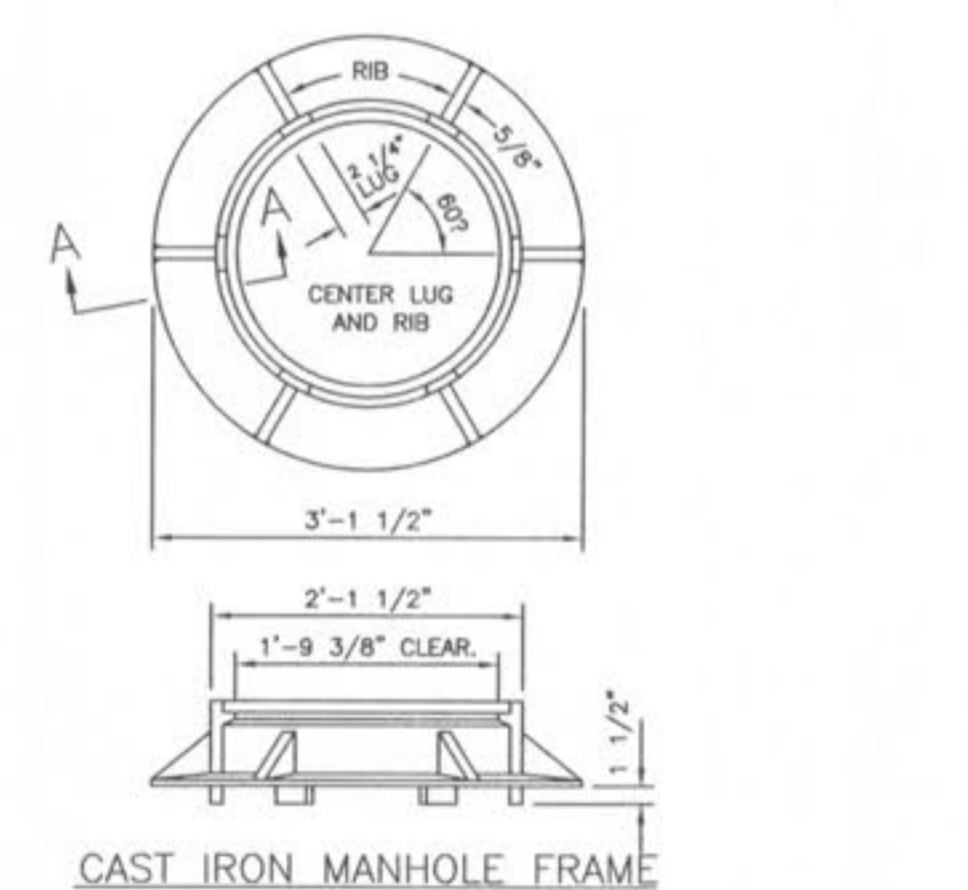


2 FLARED END SECTION
SCALE: N.T.S. REF. DWG.

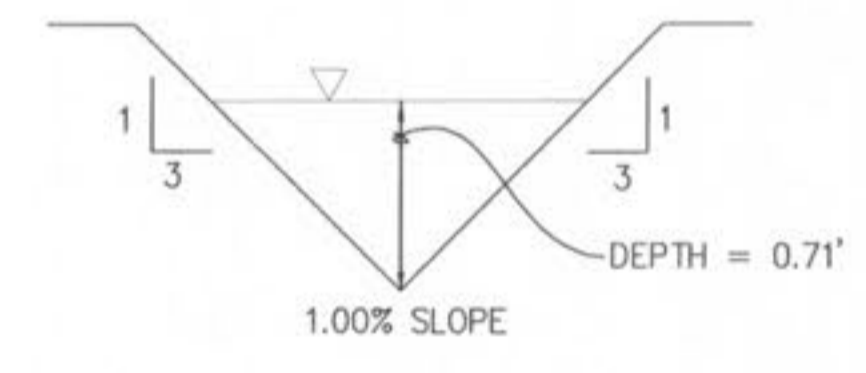


3 AREA INLET DETAIL
SCALE: N.T.S. REF. DWG.

NOTE: A 5/8" TRASH BAR WILL BE INSTALLED AND CENTERED ACROSS ALL AREA INLET AND CURB INLET OPENINGS



4 CAST IRON MANHOLE FRAME DETAIL
SCALE: N.T.S. REF. DWG.

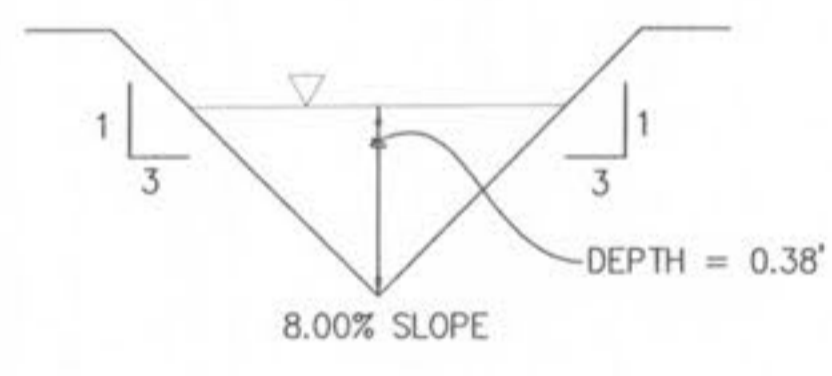


TRAPEZOIDAL CHANNEL ANALYSIS
NORMAL DEPTH COMPUTATION
TYPICAL YARD SWALE WITH 1% SLOPE
September 21, 2007

| DESCRIPTION | PROGRAM INPUT DATA | VALUE |
|--|--------------------|-------|
| Flow Rate (cfs) | | 4.0 |
| Channel Bottom Slope (ft/ft) | | 0.01 |
| Manning's Roughness Coefficient (n-value) | | 0.027 |
| Channel Left Side Slope (horizontal/vertical) | | 3.0 |
| Channel Right Side Slope (horizontal/vertical) | | 3.0 |
| Channel Bottom Width (ft) | | 0.01 |

| DESCRIPTION | COMPUTATION RESULTS | VALUE |
|--------------------------------------|---------------------|-------|
| Normal Depth (ft) | | 0.71 |
| Flow Velocity (fps) | | 2.66 |
| Froude Number | | 0.789 |
| Velocity Head (ft) | | 0.11 |
| Energy Head (ft) | | 0.82 |
| Cross-Sectional Area of Flow (sq ft) | | 1.50 |
| Top Width of Flow (ft) | | 4.25 |

HYDROCALC Hydraulics for Windows, Version 1.2a Copyright (c) 1996
Dodson & Associates, Inc., 5629 FM 1960 West, Suite 314, Houston, TX 77069
Phone: (281) 440-3787, Fax: (281) 440-4742, Email: software@dodson-hydro.com
All Rights Reserved.

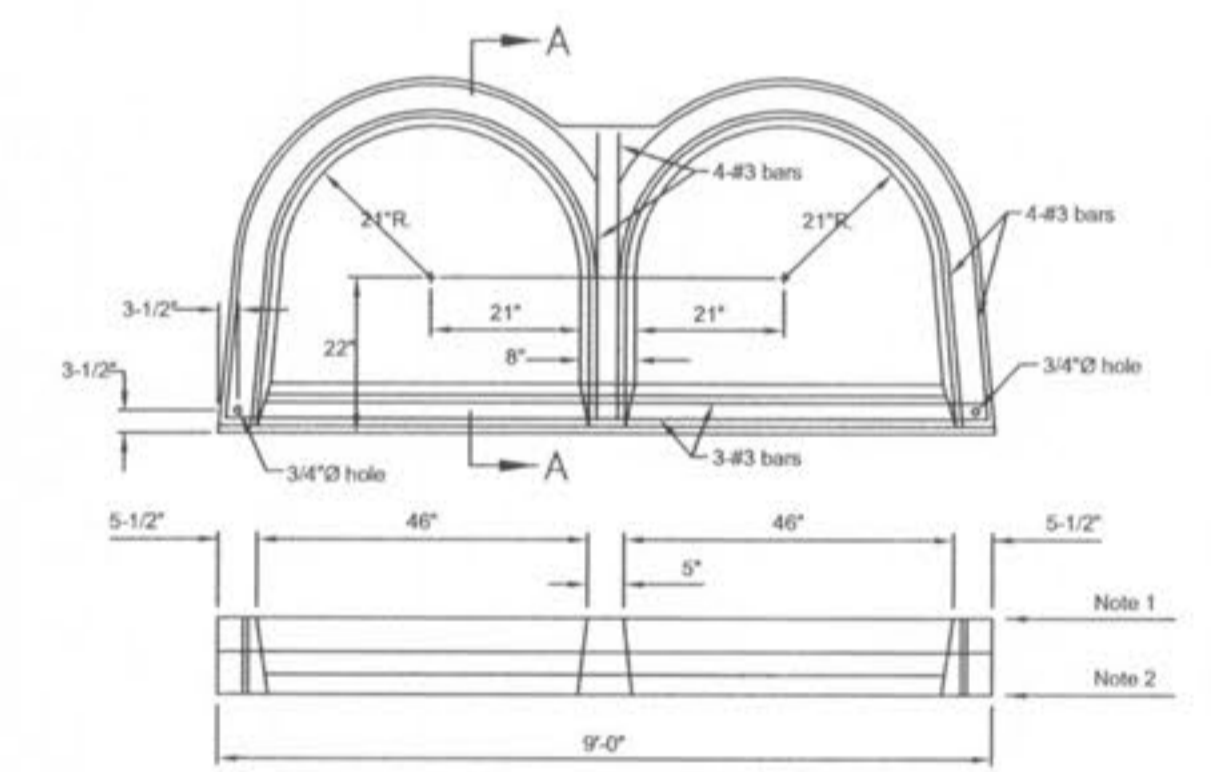


TRAPEZOIDAL CHANNEL ANALYSIS
NORMAL DEPTH COMPUTATION
TYPICAL YARD SWALE WITH 8% SLOPE
September 26, 2007

| DESCRIPTION | PROGRAM INPUT DATA | VALUE |
|--|--------------------|-------|
| Flow Rate (cfs) | | 2.16 |
| Channel Bottom Slope (ft/ft) | | 0.08 |
| Manning's Roughness Coefficient (n-value) | | 0.027 |
| Channel Left Side Slope (horizontal/vertical) | | 3.0 |
| Channel Right Side Slope (horizontal/vertical) | | 3.0 |
| Channel Bottom Width (ft) | | 0.01 |

| DESCRIPTION | COMPUTATION RESULTS | VALUE |
|--------------------------------------|---------------------|-------|
| Normal Depth (ft) | | 0.38 |
| Flow Velocity (fps) | | 4.99 |
| Froude Number | | 2.02 |
| Velocity Head (ft) | | 0.39 |
| Energy Head (ft) | | 0.77 |
| Cross-Sectional Area of Flow (sq ft) | | 0.43 |
| Top Width of Flow (ft) | | 2.28 |

HYDROCALC Hydraulics for Windows, Version 1.2a Copyright (c) 1996
Dodson & Associates, Inc., 5629 FM 1960 West, Suite 314, Houston, TX 77069
Phone: (281) 440-3787, Fax: (281) 440-4742, Email: software@dodson-hydro.com
All Rights Reserved.



5 DOUBLE CURB INLET DETAIL
SCALE: N.T.S. REF. DWG.

NOTE: A 5/8" TRASH BAR WILL BE INSTALLED AND CENTERED ACROSS ALL AREA INLET AND CURB INLET OPENINGS

REVISIONS

| DATE | BY | DESCRIPTION |
|---------|-----|------------------------|
| 9/26/07 | JKW | ADD MANHOLE DETAIL |
| 9/26/07 | JKW | ADD FLARED END SECTION |
| 9/26/07 | JKW | ADD AREA INLET DETAIL |

DEVELOPER/DRAWER:
THE JONES COMPANY HOMES, L.L.C.
16640 CHESTERFIELD GROVE, SUITE 200
CHESTERFIELD, MO 63005
PHONE: (636) 537-7192



PRESTON WOODS - PHASE II
REVISED MASS GRADING PLANS
+ PARTIAL STORM SEWER
ST. CHARLES, MO. 63366

planning • engineering • surveying • landscape architecture
Cole and Associates INCORPORATED
10777 sunset office dr.
saint louis, missouri 63127
p: 314 984 9887 f: 314 984 0587

DESIGNED BY JKW
DRAWN BY JKW
CHECKED BY JFH
DATE 8/13/07

Job Number
07-0041
Sheet Number
G6.3

USER: jwilson TAB: 06_3 DATE: 08/13/07 TIME: 10:26:11 AM DRAWING: S:\0603\060307\07-0041\CDT-0041.dwg MASS GRADING PLANS PHASE 2B\0_CPLAN_06.0 DETAILS.dwg