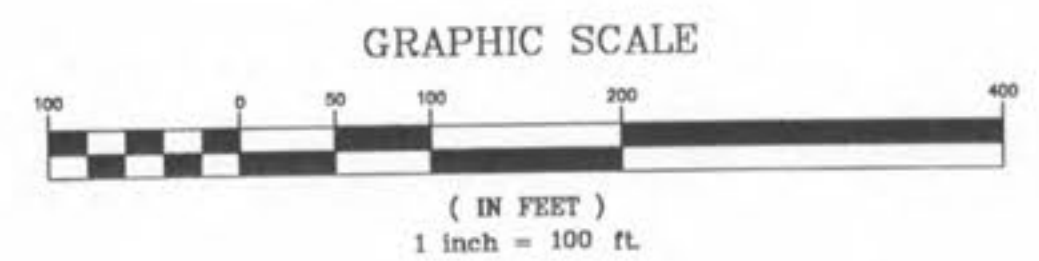
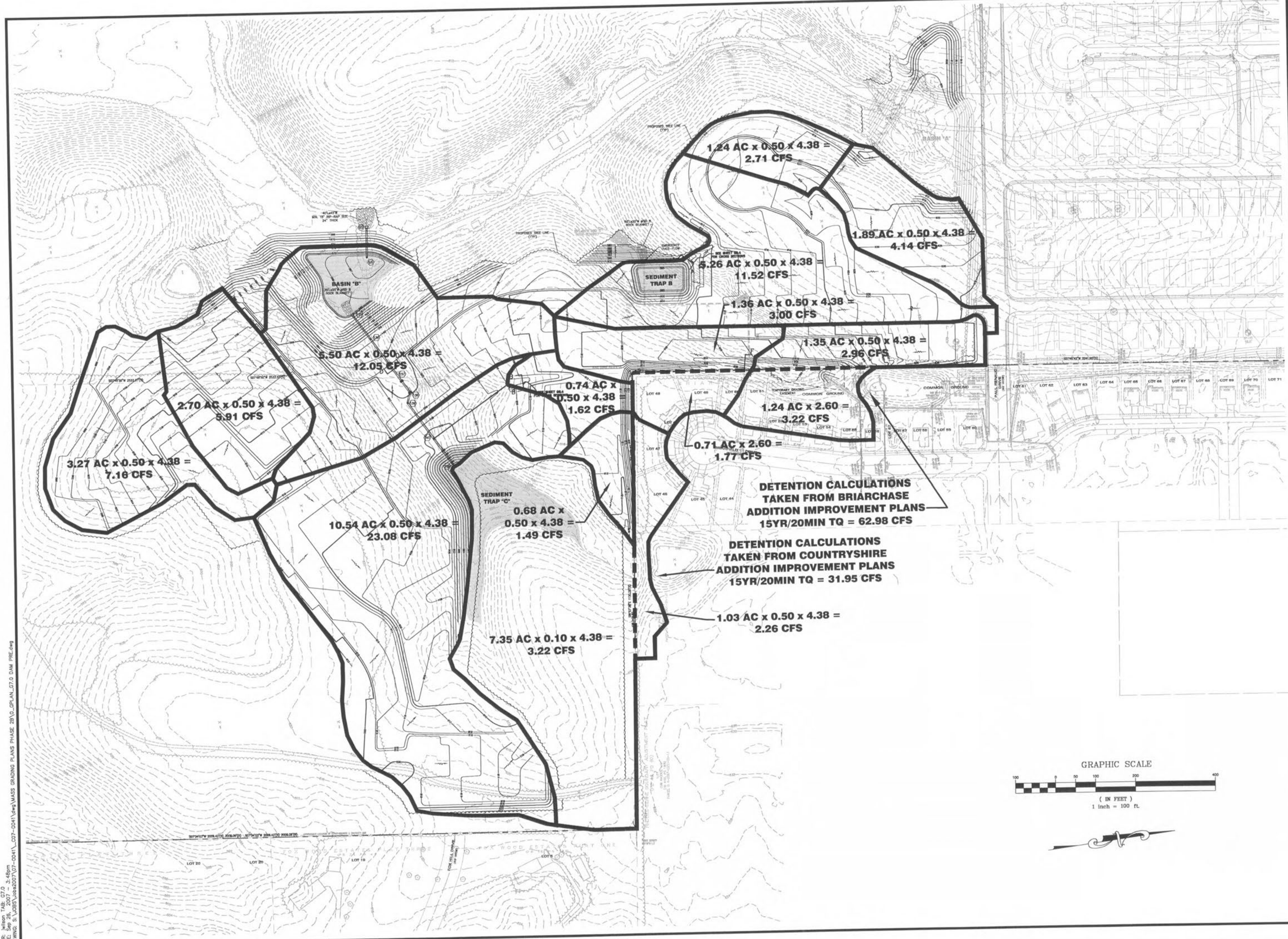


USER: M:\proj\TAB_07.D
 DATE: Sep 26, 2007 - 3:48pm
 DRAWING: S:\0355\03552007\07-0041\07-0041.dwg



PRESTON WOODS - PHASE II REVISED MASS GRADING PLANS + PARTIAL STORM SEWER ST. CHARLES, MO. 63366 PRE-DEVELOPED DRAINAGE AREA MAP		DEVELOPER/OWNER: THE JONES COMPANY HOMES, L.L.C. 16640 CHESTERFIELD GROVE, SUITE 200 CHESTERFIELD, MO 63005 PHONE: (636) 537-7192	DATE: 9/13/07 DESIGNED BY: JKW DRAWN BY: JKW CHECKED BY: JFH DATE: 8/13/07	REVISIONS NO. DATE BY COMMENTS 1 9/13/07 JKW 2 9/13/07 JKW 3 9/13/07 JKW
COLE and ASSOCIATES INCORPORATED 10777 sunset office dr. saint louis, missouri 63127 p. 314.984.9887 f. 314.984.0587			SEAL: [Professional Engineer Seal] JOHN P. WILSON MISSOURI PROFESSIONAL ENGINEER E-29316	I AM A PROFESSIONAL ENGINEER IN THE STATE OF MISSOURI MY EXPIRES ON 12/31/2011