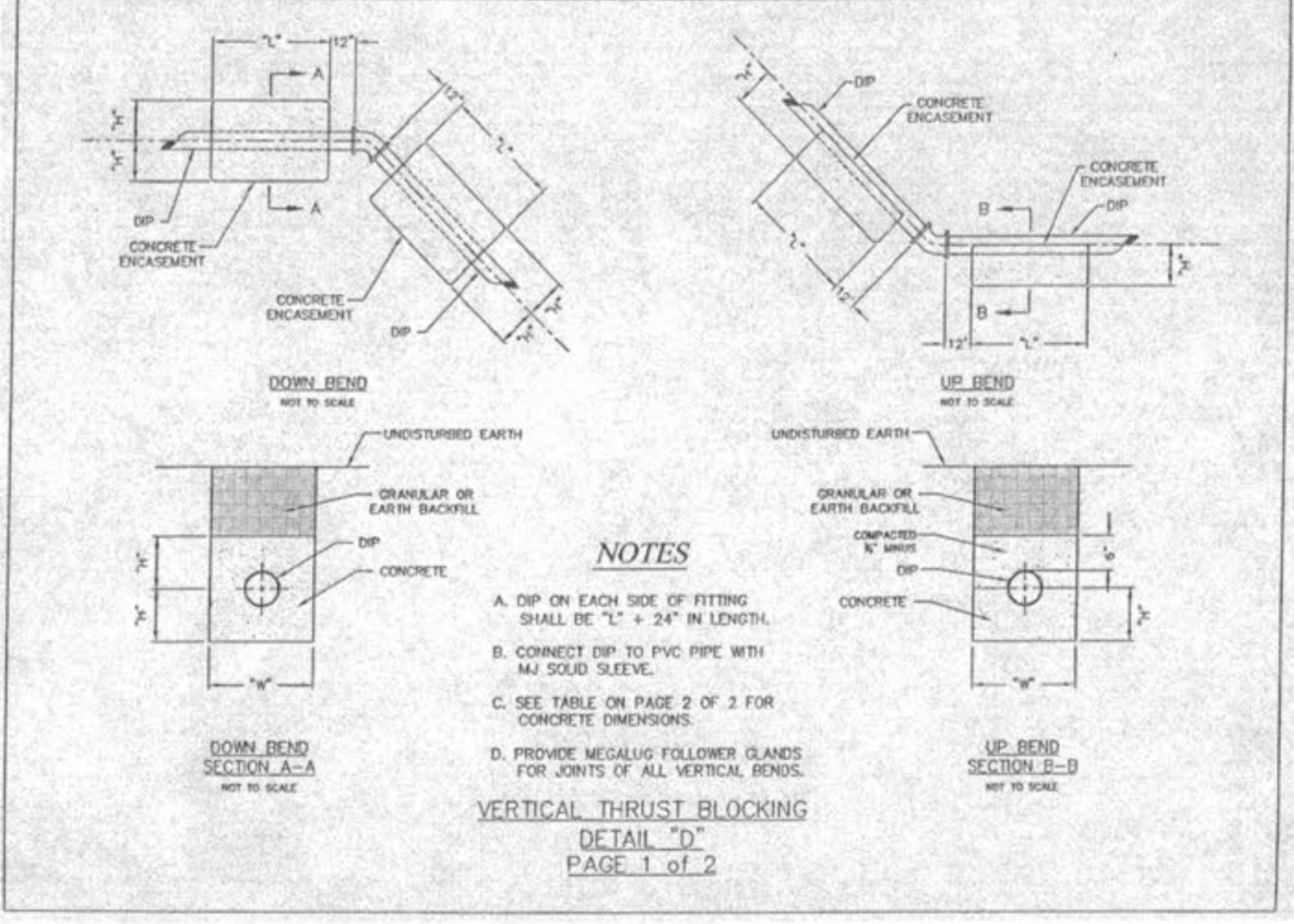
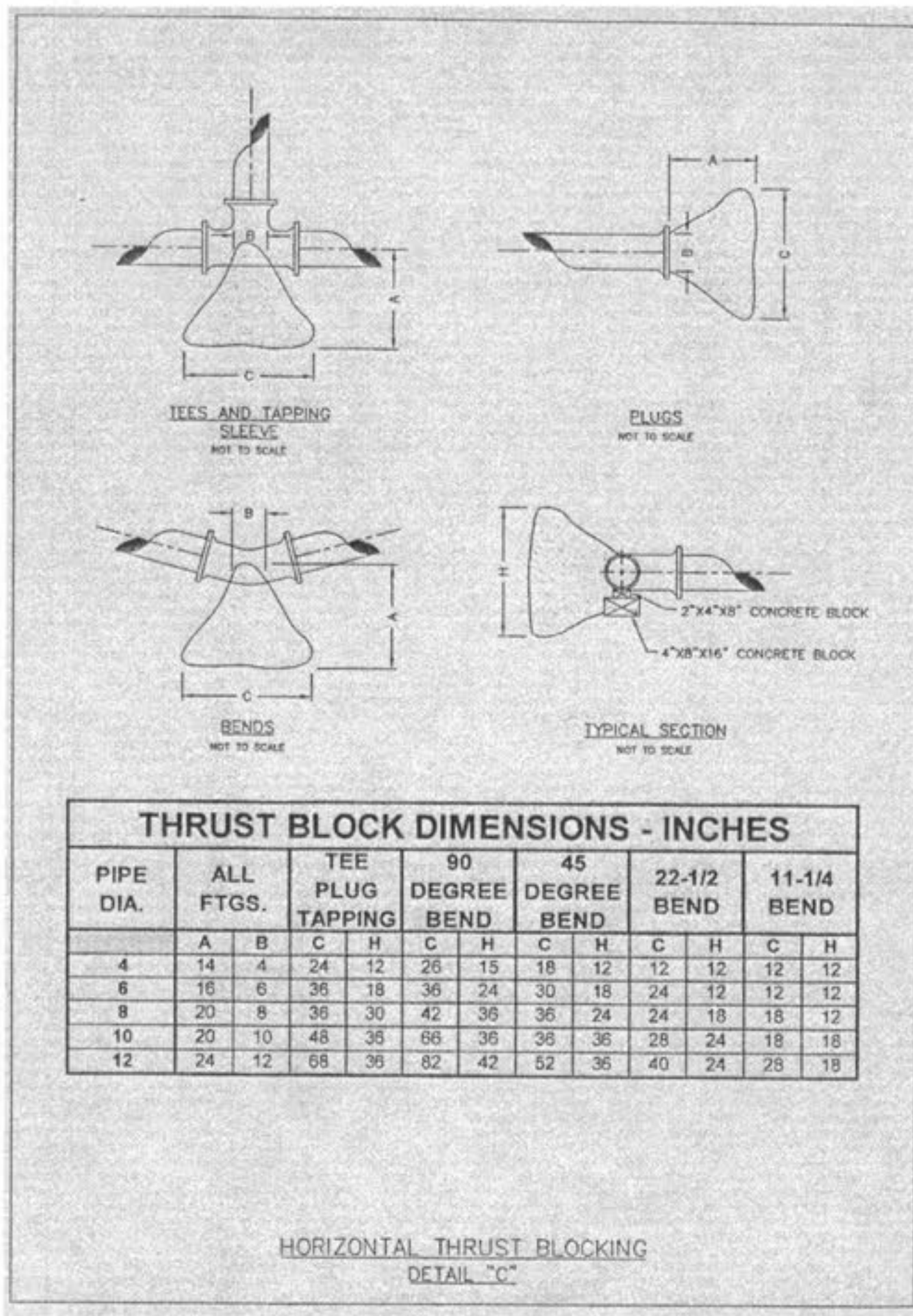
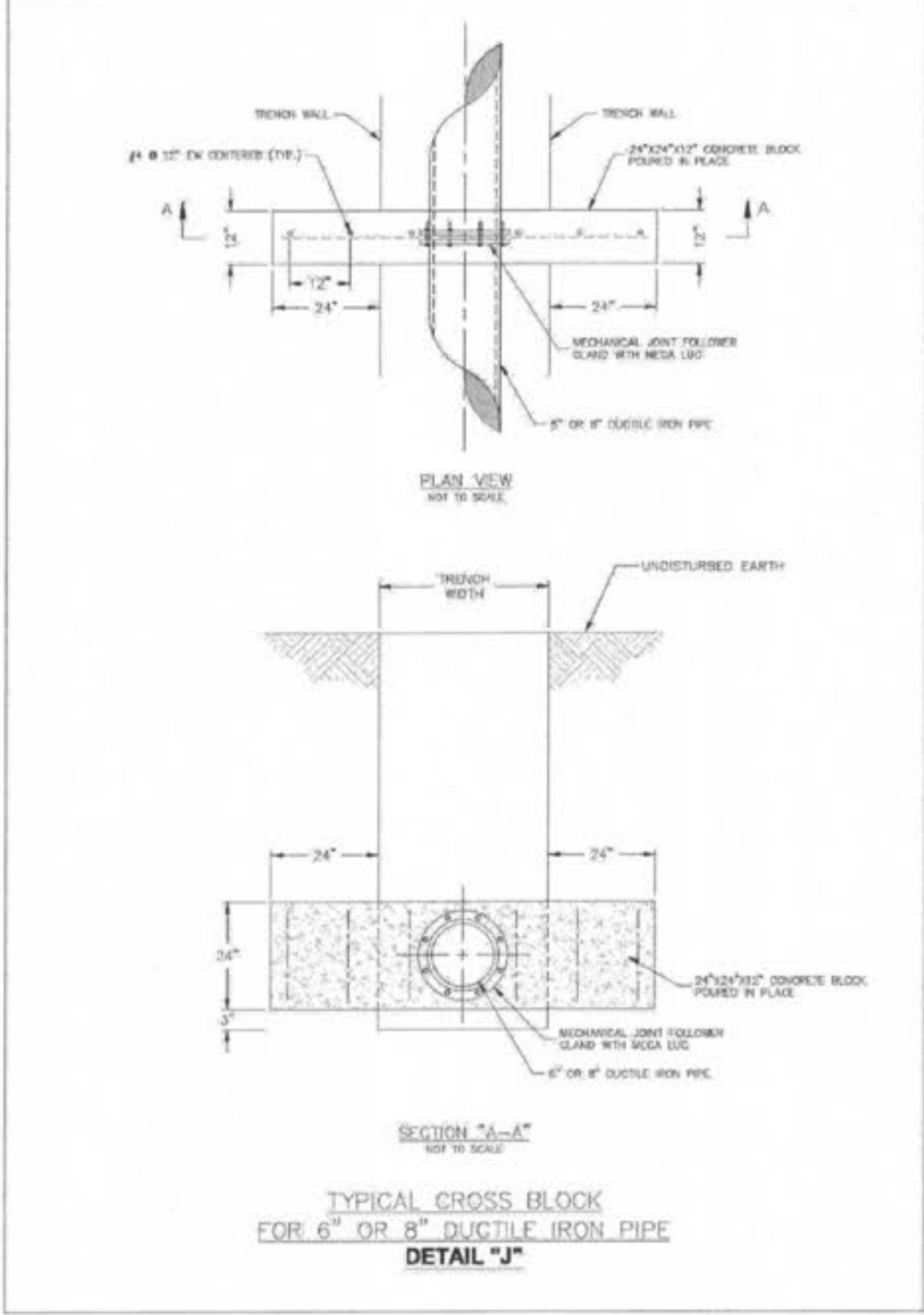
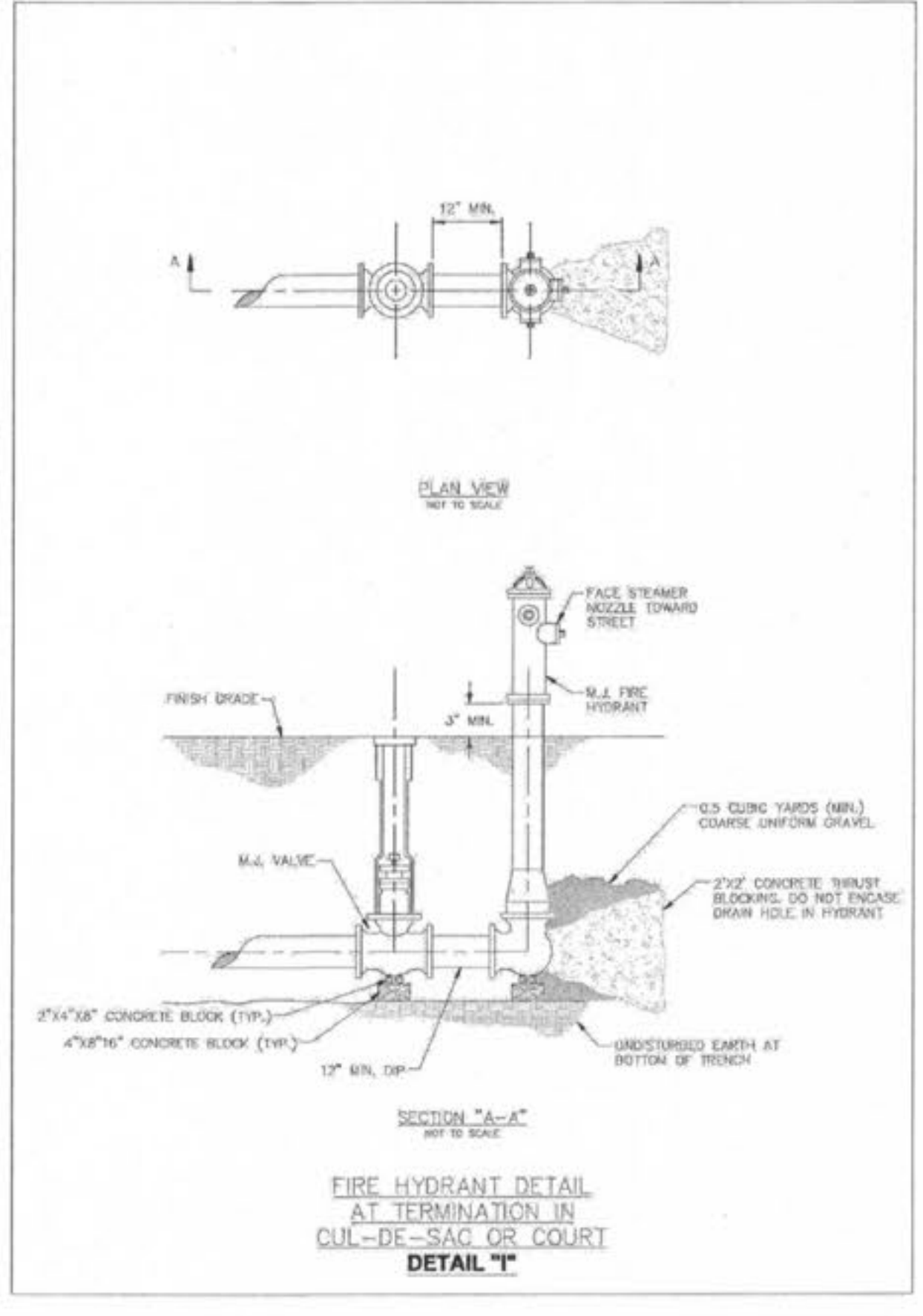
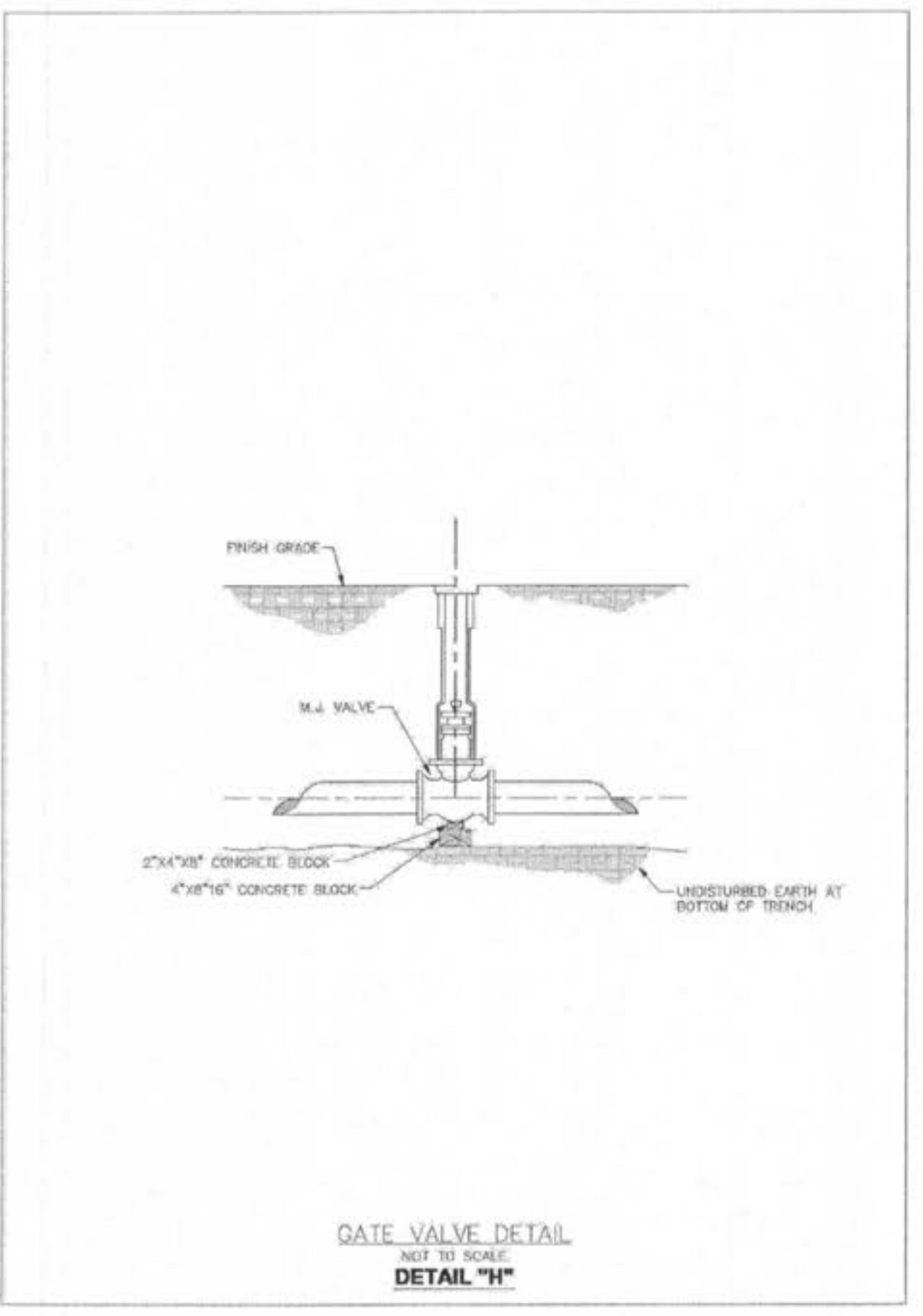


USER: Nelson TAB: WATER DETAIL 9.11
 DATE: May 01, 2008 - 8:07am
 DRAWING: S:\JOBS\Jobs2007\07-0178\07-0178.dwg IMPROVEMENT PLANS PHASE III\NO_PLAN_C9.0_DETAILS.dwg



DIMENSIONS FOR VERTICAL BENDS (IN INCHES) DETAIL "D" PAGE 2 of 2

PIPE SIZE	DEGREE BEND	DOWN BENDS			UP BENDS		
		W	H	L	W	H	L
4"	11 1/4°	18	12	18	12	12	12
	22 1/2°	18	18	24	12	12	12
	45°	18	18	30	12	12	18
6"	11 1/4°	24	18	18	12	12	12
	22 1/2°	24	18	24	12	12	12
	45°	24	18	48	12	12	18
8"	11 1/4°	24	18	24	12	12	18
	22 1/2°	24	18	42	12	12	24
	45°	24	18	48	18	12	24
10"	11 1/4°	30	24	24	18	18	18
	22 1/2°	30	24	42	18	18	24
	45°	30	24	72	18	18	36
12"	11 1/4°	30	24	30	18	18	18
	22 1/2°	30	24	54	18	18	30
	45°	30	36	72	24	18	36



PRESTON WOODS - PHASE III IMPROVEMENT PLANS
PRESTON WOODS LANE
O'FALLON, MO. 63366

WATER DETAILS

COLE and ASSOCIATES INCORPORATED
10777 sunset office dr.
saint louis, missouri 63127
p: 314 984 9887 f: 314 984 0587

DESIGNED BY: JKW
 DRAWN BY: KDK
 CHECKED BY: JFH
 DATE: 12/19/07
 Job Number: 07-0178
 Sheet Number: C9.11

REVISIONS

DATE	BY	DESCRIPTION
5/7/08	A	ISSUE REPAIR & BUCKET CHECK COMMENTS
4/2/08	A	ADD COMMENTS
5/7/08	A	ADD COMMENTS

THE PROFESSIONAL ENGINEER'S SEAL AND SIGNATURE ARE NECESSARY FOR THESE PLANS TO BE VALID. ANY PROFESSIONAL LIABILITY INSURANCE POLICY MUST BE MAINTAINED IN FULL FORCE AND EFFECT. THE PROFESSIONAL ENGINEER ASSUMES RESPONSIBILITY ONLY FOR WHAT APPEARS ON THIS PAGE AND DISCLAIMS LIABILITY FOR ALL OTHER PAGES OF THIS SET OF PLANS. THESE PLANS SHALL BE SEaled BY THE UNDERSIGNED PROFESSIONAL ENGINEER TO BE USED FOR ANY PART OR PARTS OF THE PROJECT TO WHICH THIS PAGE REFERS.